



Countries: BAHAMAS, BOLIVIA, BRAZIL, BELIZE, CANADA, CHILE, TAIWAN, COLOMBIA, COSTA RICA, DOMINICAN REPUBLIC, ECUADOR, EL SALVADOR, TRINIDAD AND TOBAGO, UNITED STATES, URUGUAY, VENEZUELA, MEXICO, ARUBA, NICARAGUA, PERU, PUERTO RICO, Curaçao, GUAM, GUATEMALA, GUYANA, HAITI, HONDURAS, JAMAICA, KOREA, SOUTH KOREA, NEW ZEALAND, PANAMA, SOUTH AFRICA
Document ID: IK0800059
Availability: ISIS, FleetISIS, Body Builder, IsSIR
Revision: 9
Major System: ELECTRICAL SYSTEM
Created: 2/14/2007
Current Language: English
Last Modified: 2/12/2018
Other Languages: [Portuguese](#), [Français](#), [Español](#)
Author: Charles Schroeder
Viewed: 6938

[Less Info](#)

Hide Details

Coding Information

Copy Link 	Copy Relative Link 	Bookmark View My Bookmarks	Add to Favorites 	Print 	Provide Feedback 	Helpful 883	Not Helpful 742
----------------------	-------------------------------	--	-----------------------------	------------------	-----------------------------	---------------------------	-------------------------------

Title: Brake Lights Staying On

Applies To: All HPV

Change Log

Please refer to the change log text box below for recent changes to this article:

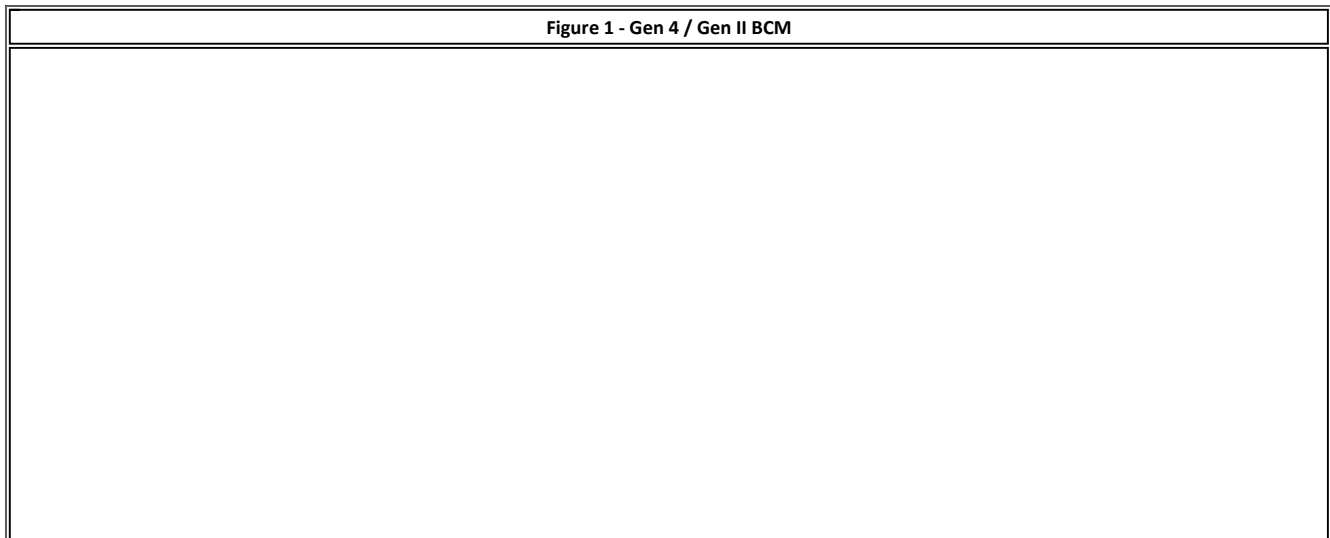
02/12/2018 - Updated description and added feature codes to clarify why this symptom may occur.
 12/08/2015 - Updated screenshots and formatting.
 01/06/2014 - Updated author for feedback purposes.
 09/04/2013 - Added screenshots.
 08/23/2007 - Article published.

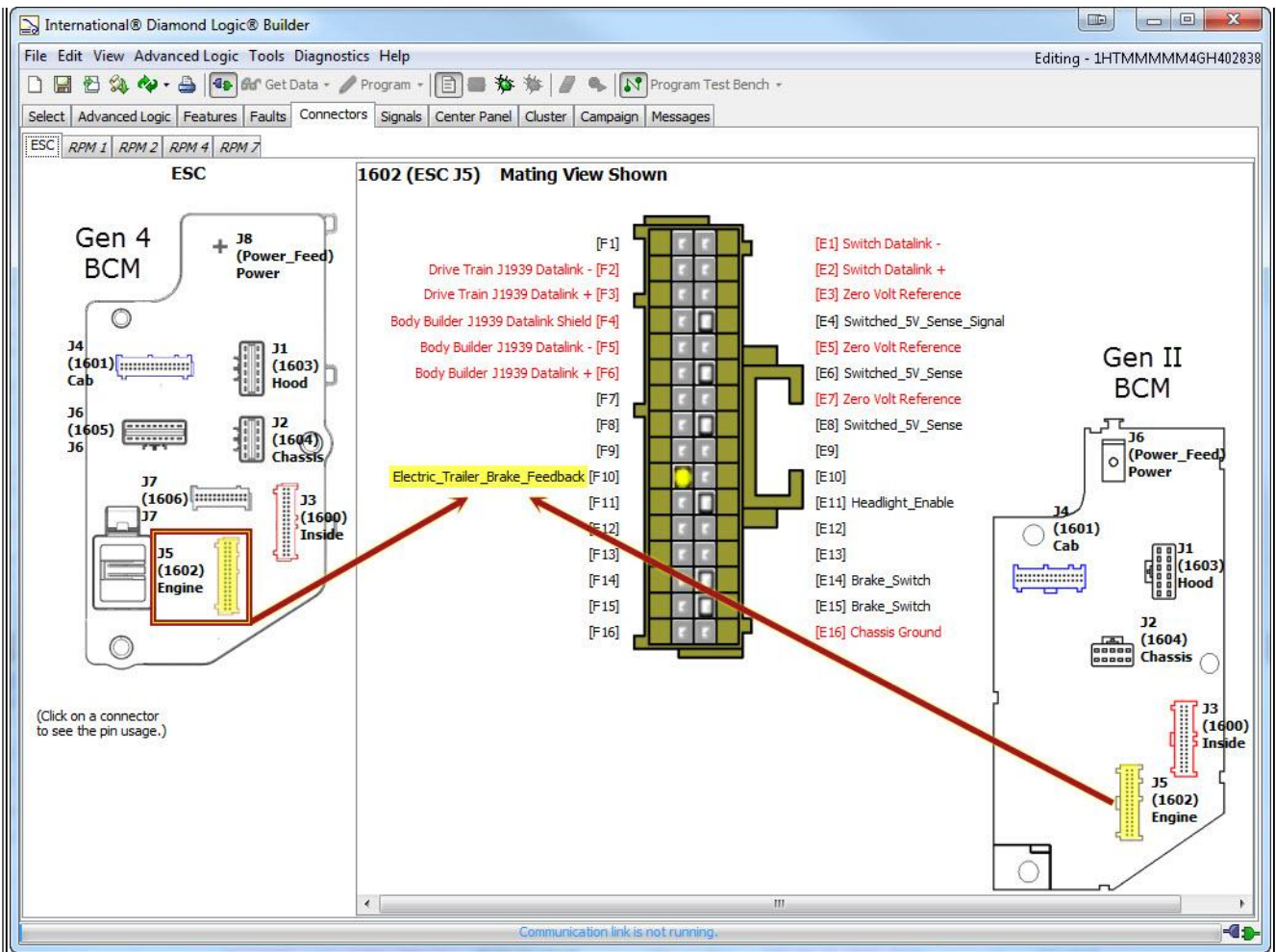
Description

If you are having problems with the brake lights saying on, you need to check the electric trailer brake feedback circuit.

- If voltage is present at the feedback circuit the brake lights will be illuminated, even if the customer has not installed an electric trailer brake controller.
 - Feature 0595AHU for 07 up BCM (0595203 with ESC).
 - Feature must be installed, with a signal on the wire for this complaint. (i.e. A wiring issue, allowing a signal on this input).

2007 & newer (Gen II and Gen 4 Body Controllers) NGV





- Check 1602-F10 for voltage.
- This is a voltage input for electric trailer brake feedback.
- Feature 0595AHU

Pre - 2007 (ESC) NGV

Figure 2 - ESC

The screenshot shows the International Diamond Logic Builder interface. On the left, a wiring diagram for the ESC (4004) is displayed, with connector J5 (4004) Engine highlighted in a red box. A red arrow points from this connector to the pinout table on the right. The pinout table is titled '4004 (ESC J5) Mating View Shown' and lists 36 pins with their corresponding signals. Pin 15 is highlighted in yellow and labeled 'Electric_Trailer_Brake_Feedback'. The signals listed include: [1] (blank), [2] (blank), [3] PTO_Feedback_Switch, [4] (blank), [5] Fuel_Sensor1_Signal, [6] BC_RCD_Temp_Out_Cond_Signal, [7] BC_RCD_Temp_In_Cond_Signal, [8] AC_High_Side_Pressure, [9] (blank), [10] (blank), [11] (blank), [12] (blank), [13] (blank), [14] (blank), [15] Electric_Trailer_Brake_Feedback, [16] (blank), [17] Trailer_Marker_Relay, [18] (blank), [19] (blank), [20] Wiper_High_Speed_Cmd, [21] Brake_Lights, [22] TEM_PTO_Air_Solenoid_Cmd, [23] (blank), [24] Diff_Lock_Solenoid_Cmd, [25] (blank), [26] Zero Volt Reference, [27] Switched_5V_Sense_Signal, [28] (blank), [29] Wiper_Low_Speed_Cmd, [30] (blank), [31] Air_Horn, [32] (blank), [33] Brake_Analog_Switch_Signal, Brake_Switch_Signal, [34] Body Builder J1939 Datalink +, [35] Body Builder J1939 Datalink -, [36] Body Builder J1939 Datalink Shield.

- Check 4004-15 for voltage.
- This is a voltage input for electric trailer brake feedback.
- Feature 0595203

Other Resources

- [Master Service Information](#)

Hide Details

Feedback Information	
Viewed:	6937
Helpful:	883
Not Helpful:	742

No Feedback Found