



SERVICE BULLETIN

Classification: RS17-032a	Reference: NTB18-014a	Date: February 14, 2018
------------------------------	--------------------------	----------------------------

2013-2016 NV200 AND 2014-2016 TAXI; OCCUPANT CLASSIFICATION RETROFIT

This bulletin has been amended. The CLAIMS INFORMATION section has been corrected. No other changes have been made. Please discard all previous versions of this bulletin.

APPLIED VEHICLES: 2013-2016 NV200 (M20)
2014-2016 Taxi

SERVICE INFORMATION

The information in this bulletin is provided for customers who have concerns with their Occupant Classification System (OCS) operation after all campaigns have been completed.

Follow the steps in this bulletin to determine if this OCS retrofit procedure is applicable to the vehicle you are working on.

DETERMINE IF OCS RETROFIT APPLIES

1. Check Service COMM to confirm if OCS reprogramming campaign has been completed (R1607 / NTB16-054).

Completed:

- Write on the repair order the date it was completed and by which dealer.
- Go to step 2.

Not Completed:

- Complete campaign R1607 / NTB16-054.
- No further action needed. OCS retrofit does NOT apply.

Nissan Bulletins are intended for use by qualified technicians, not 'do-it-yourselfers'. Qualified technicians are properly trained individuals who have the equipment, tools, safety instruction, and know-how to do a job properly and safely. **NOTE:** If you believe that a described condition may apply to a particular vehicle, DO NOT assume that it does. See your Nissan dealer to determine if this applies to your vehicle.

2. Verify and document the customer's concern (have the customer demonstrate the concern).

3. Using CONSULT-III plus, check for Airbag or OCS related DTCs.

No Airbag or OCS DTCs: go to step 4.

Airbag or OCS DTCs stored:

- Refer to the Electronic Service Manual (ESM), section SRC – SRS Airbag Control System, for diagnostic and repair information.

- OCS retrofit does NOT apply.

4. If all of the following are confirmed:
 - Campaign R1607 / NTB16-054 has been completed.
 - Customer concern has been confirmed and documented.
 - No Airbag or OCS DTCs are stored.

Then

5. Perform the Service Procedure in this bulletin.

SERVICE PROCEDURE

WARNING: This procedure involves working under the passenger seat. The metal seat frame has sharp edges.

CAUTION: Handle interior trim carefully to avoid damage. Work with clean hands and clean tools to avoid dirt and stains. Use protective covers as needed.

IMPORTANT: Follow all cautions, warnings, and notes in the Electronic Service Manual (ESM) when working on or near a Supplemental Restraint System (SRS), such as an air bag or OCS components.

1. Turn the ignition ON, engine OFF.
2. Write down the radio settings.

Presets	1	2	3	4	5	6
AM						
FM 1						
FM 2						
SAT 1						
SAT 2						
SAT 3						
Bass	Treble		Balance		Fade	Spd Sen. Vol.

3. Record (write down) any other customer settings that will be lost when the battery is disconnected.
 - Refer to the Electronic Service Manual (ESM) section PG-Power Supply, Ground, & Circuit Elements, for a listing of systems that may lose settings or memory when disconnecting the 12V battery.
 - Look in the PG section index for ADDITIONAL SERVICE WHEN REMOVING BATTERY NEGATIVE TERMINAL.
 - This list often includes items such as audio, HVAC, power windows, clock, etc.
4. Turn the ignition OFF.

5. Front passenger seat removal:
 - a. Disconnect both battery cables, negative cable first.
 - b. Wait at least 3 minutes.
 - c. Remove the passenger seat from the vehicle.
 - Refer to the ESM, section SE-Seat, for seat removal information.

6. Set the seat in a clean working area.

7. Remove the seatbelt buckle.
 - Buckle is held on with one bolt.

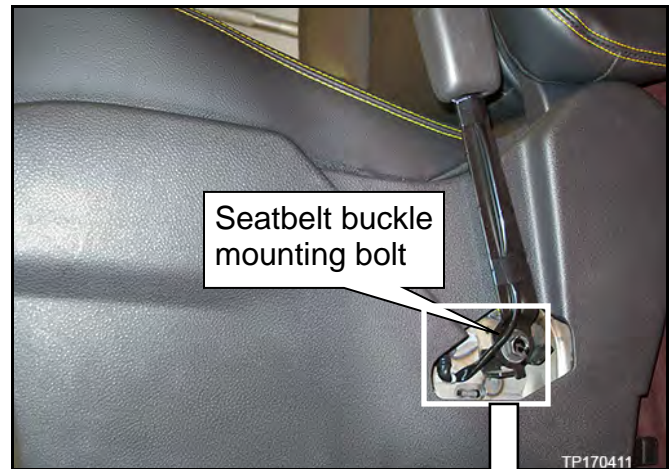


Figure 1

8. Disconnect seatbelt buckle harness clip.

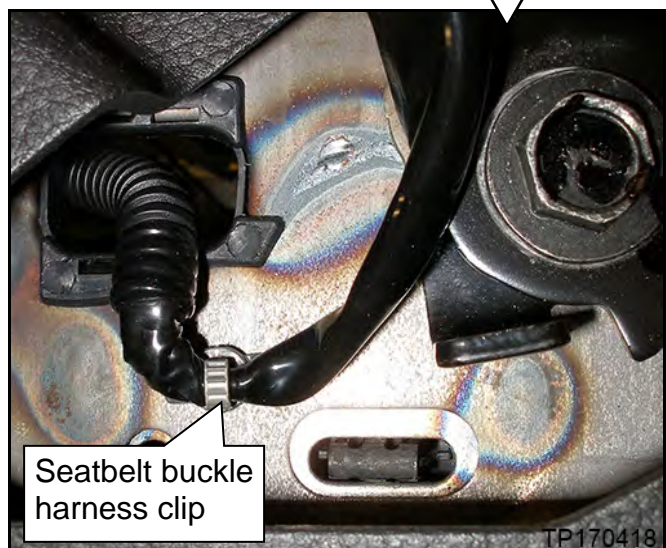


Figure 2

9. Remove drawer from under front passenger seat.
 - Slide drawer towards front of seat to remove drawer.

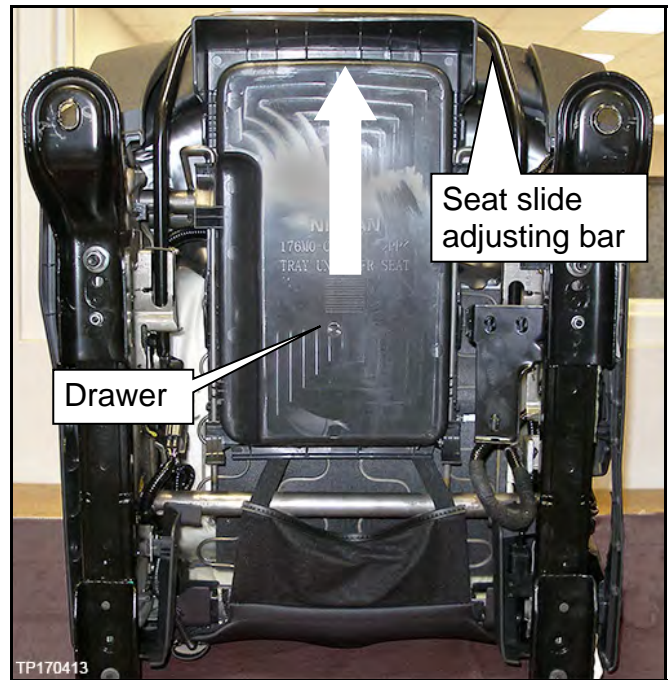


Figure 3

10. From under the seat, disconnect the seatbelt buckle electrical connector.

NOTE: To aid in installation of new harnesses, pay close attention to old harness routing and clip locations.

11. Remove the seatbelt buckle harness clip.

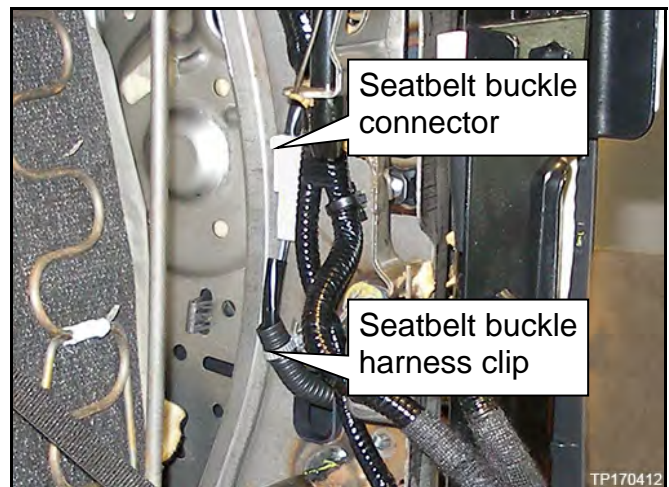


Figure 4

12. At this point, the old seatbelt buckle and harness are disconnected from all mounting points and can be completely removed from the seat.

13. Refer to the circled area in Figure 5.

- **Old** harnesses will have **2** wires in these connectors.
- **New** harnesses will have **3** wires in these connectors.
- New OCS harness and new seatbelt buckle harness are equipped with new fastening clips pre-installed.

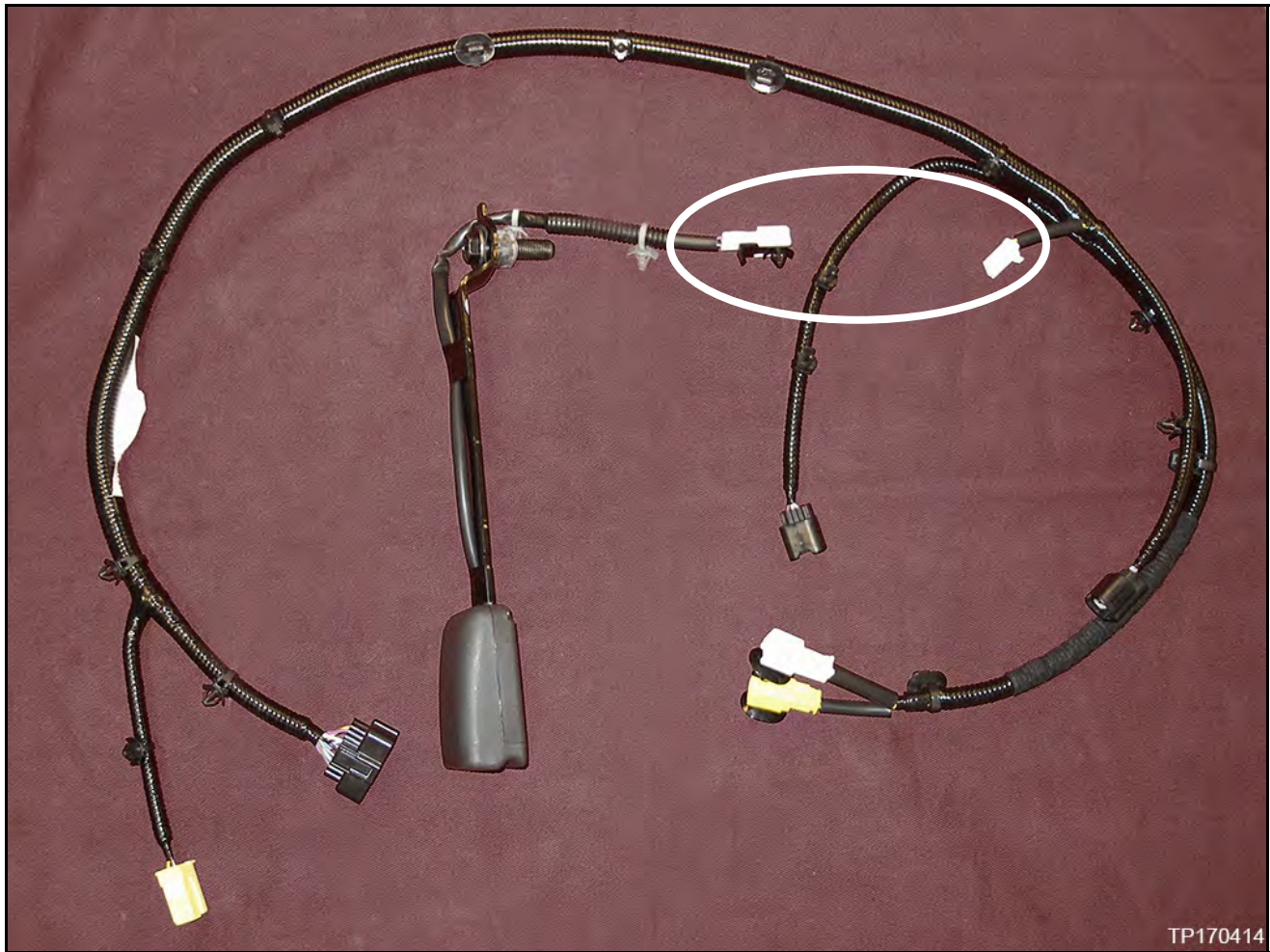


Figure 5

NOTE: To aid in installation of new harnesses, pay close attention to old harness routing and clip locations.

14. Unfasten seat trim clip from seat frame.

- Seat trim does not need to be removed from seat.

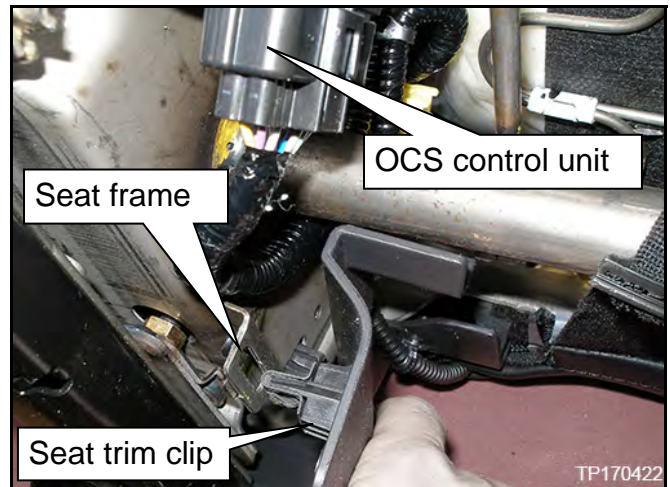


Figure 6

15. Disconnect OCS control unit electrical connector.



Figure 7

16. Disconnect yellow OCS harness connector.

- Harness connector is located under seat frame support bar near OCS control unit.

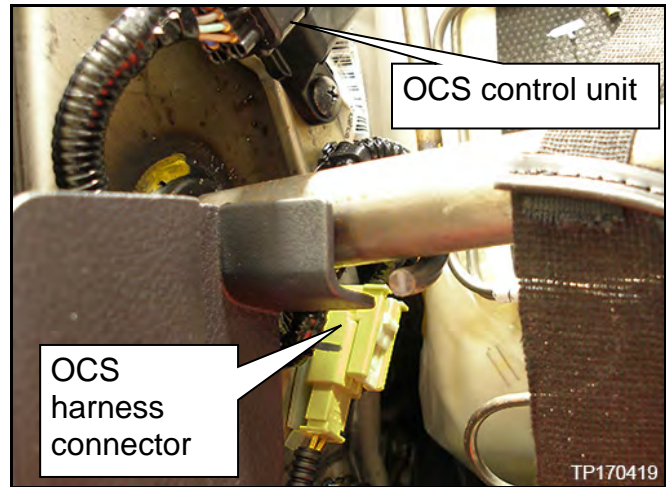


Figure 8

17. Disconnect harness clips on OCS harness located below OCS control unit.

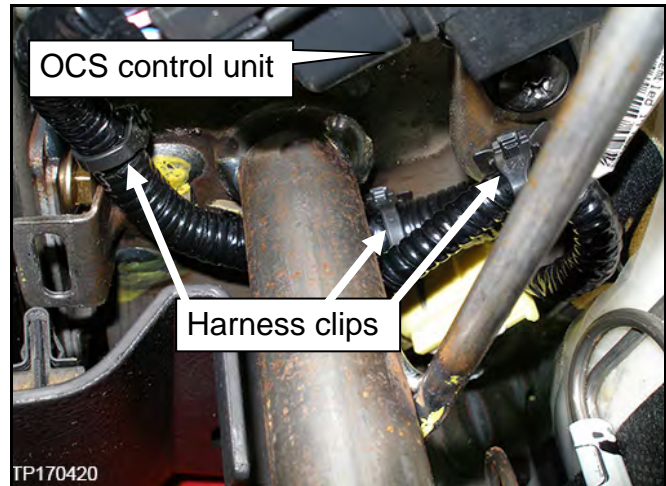


Figure 9

18. Disconnect harness clips on OCS harness located above OCS control unit.

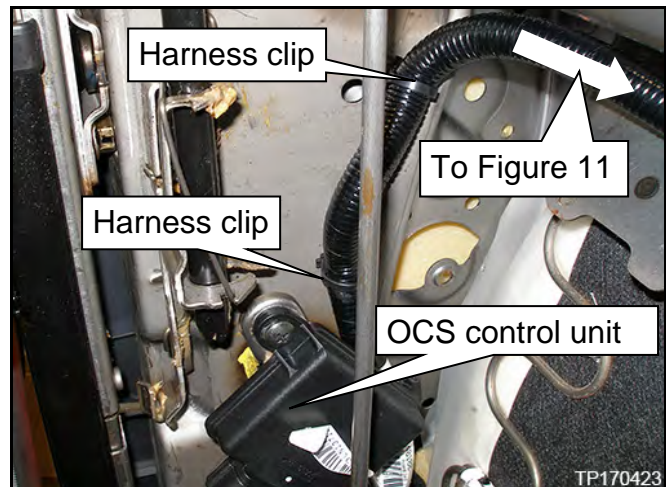


Figure 10

19. Disconnect harness clips on OCS harness located near front of seat.

- Use needle nose pliers to release rear of clips behind seat frame.

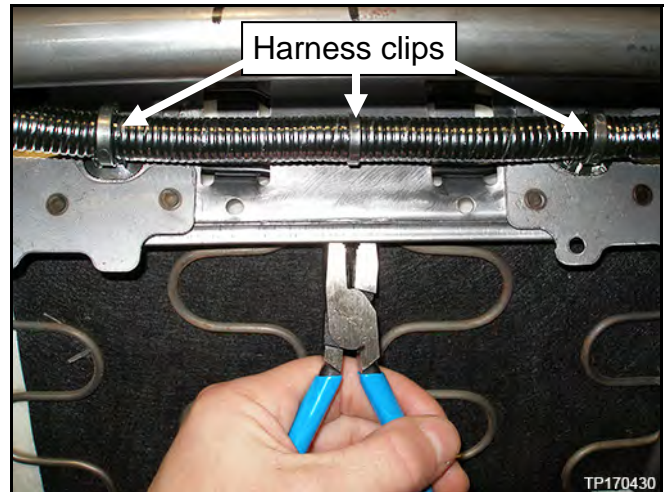


Figure 11

20. Disconnect OCS sensor at front of seat.

21. Disconnect harness clips.

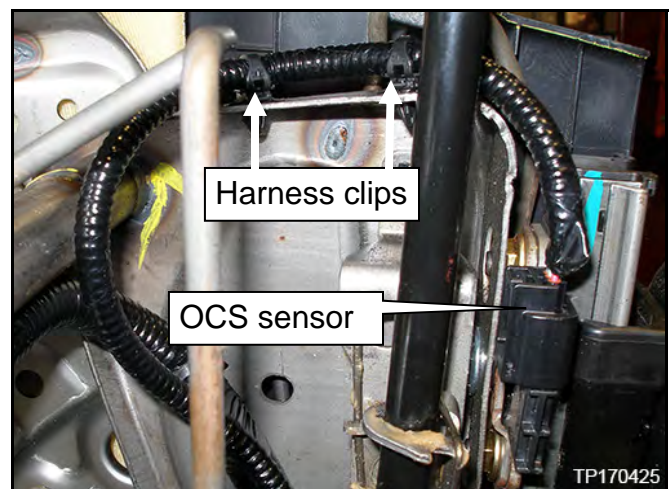


Figure 12

22. Disconnect harness connectors and clips shown in Figure 13.

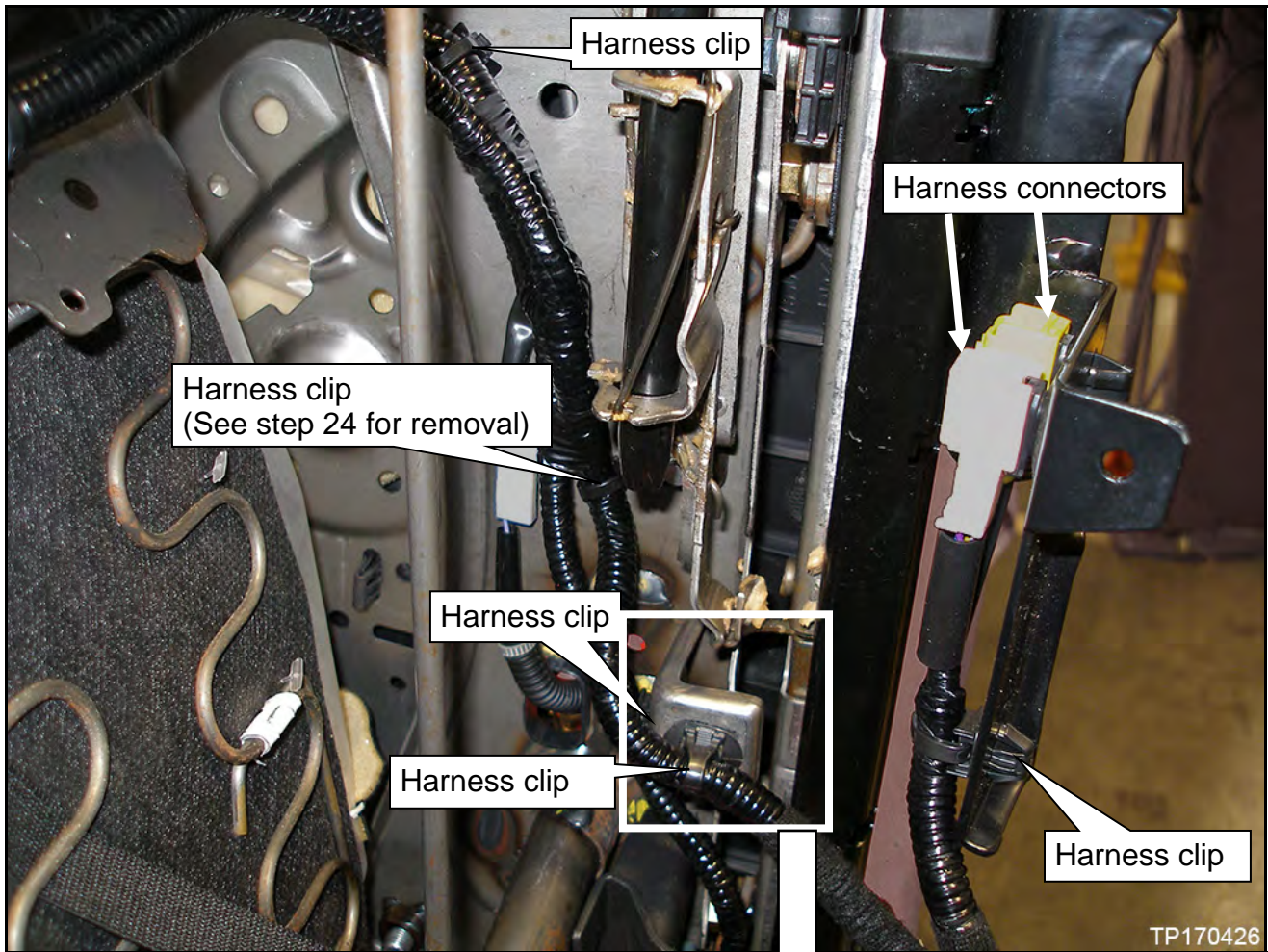


Figure 13

23. Cut the clips shown in Figure 14 to avoid bending the mounting bracket.

NOTE: New OCS harness is equipped with new fastening clips pre-installed.

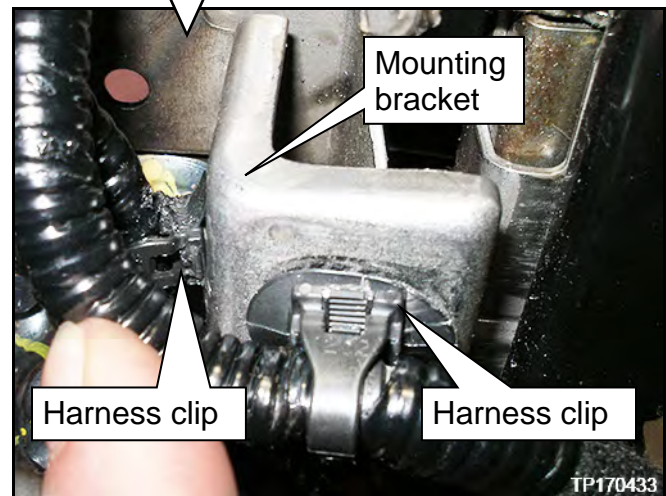


Figure 14

24. Disconnect front of seat side trim to access harness clip shown in Figure 13.

- Seat trim does not have to be removed from seat.

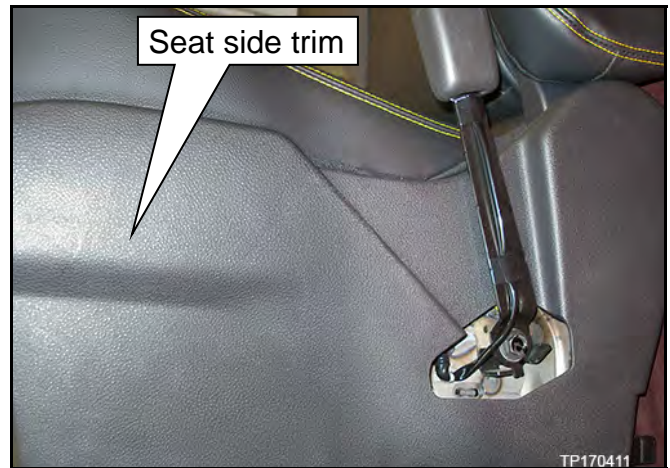


Figure 15

- Firmly grasp seat side trim near front of seat slide adjusting bar and **carefully** pull away from seat.
- Lift up while pulling out to release from seat side trim mounting bar.

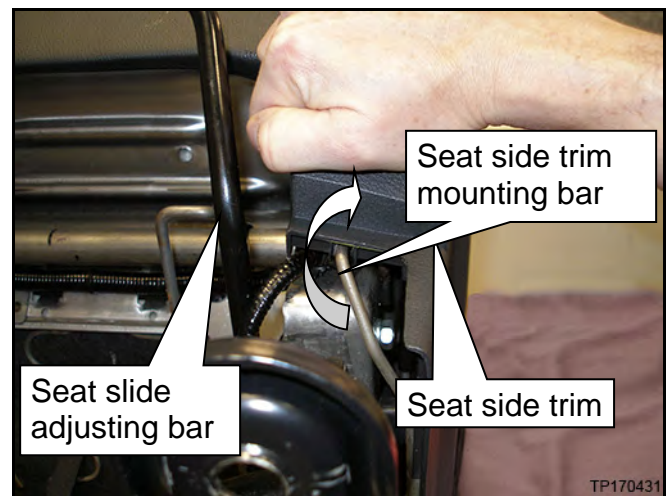


Figure 16

- Pull seat side trim away from seat to access the back of the harness clip in Figure 13.
- Only move side trim enough to access back of harness clip.

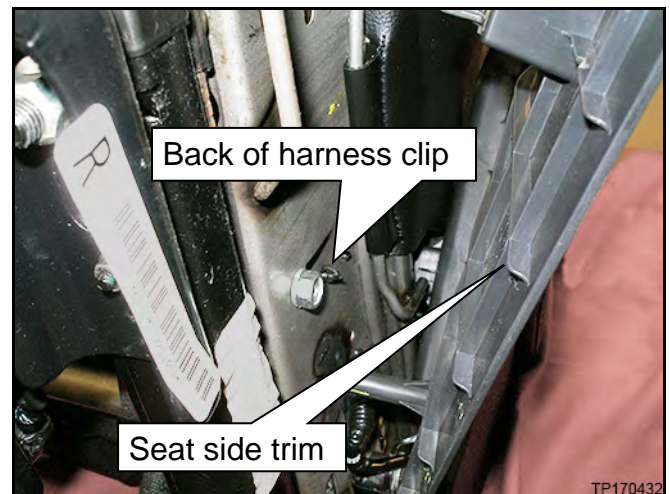


Figure 17

25. Unfasten seat trim clip from seat frame near OCS sensor at rear of seat.

- Seat trim does not need to be removed from seat.

26. Disconnect OCS sensor at rear of seat.

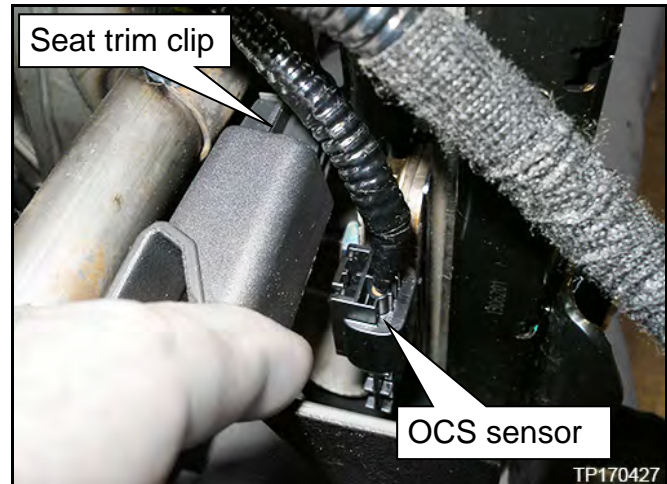


Figure 18

27. At this point, the old OCS harness is disconnected from all connections and mounting points and can be completely removed from the seat.

28. Replace OCS control unit.

- OCS control unit is held on with 2 screws.
- Use new OCS control unit listed in the Parts Information.

29. Install new seatbelt buckle.

- Torque seatbelt buckle anchor bolt to: 49 N•m (5.0 kg-m, 36 ft-lb).

30. Route new seatbelt harness through seat frame pass-through.

31. Attach seatbelt buckle harness clip.

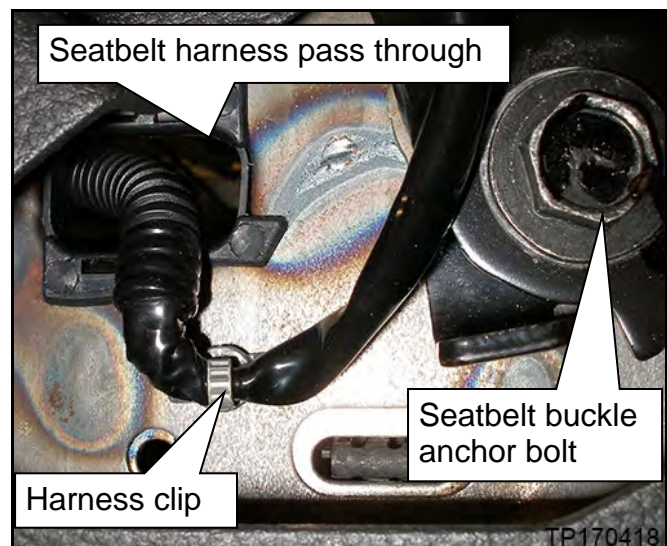


Figure 19

32. Connect new seatbelt buckle harness connector to seat frame.

33. Attach seatbelt buckle harness clip.

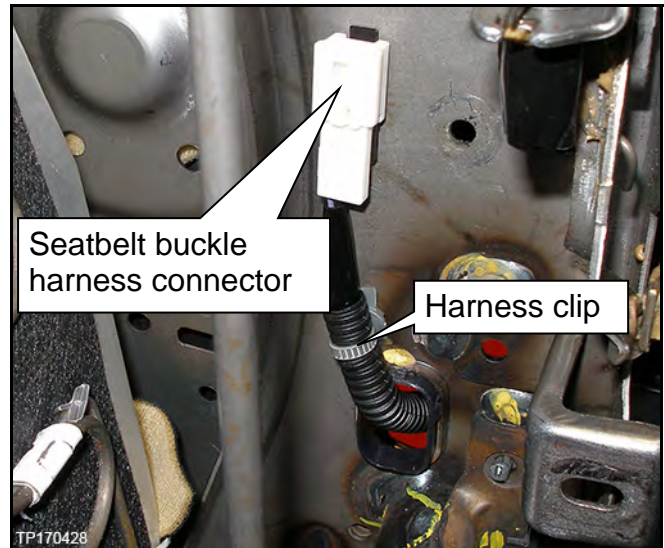


Figure 20

34. Install new OCS harness in same location as old OCS harness.

- Connecting the rear OCS sensor electrical connector **first** will aid in new OCS harness installation.

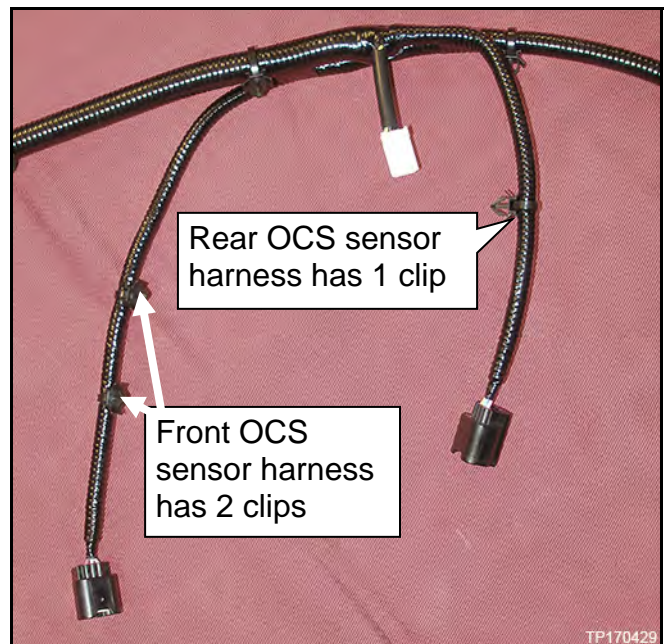


Figure 21

35. Continue installation of the new OCS harness in reverse order of removal (refer to step 26 and work backwards to step 14).

36. Reinstall front passenger seat drawer.

37. Reinstall the seat into the vehicle in reverse order of removal.

- Reconnect vehicle harnesses to seat harnesses.
- Torque mounting bolts to: 40 N•m (4.1 kg-m, 30 ft-lb).
- Refer to Figure 22 for torque sequence.



Figure 22

38. Reconnect the battery cables, positive cable first.

39. Reset/reinitialize systems as needed.

- Refer to the ESM section, PG – Power, Supply & Ground Elements for a listing of systems that require reset/initialization after reconnecting the 12V battery.
 - Look in the PG section index for **ADDITIONAL SERVICE WHEN REMOVING BATTERY NEGATIVE TERMINAL.**
 - This list often includes items such as audio, power windows, clock, etc.

40. Perform Zero Point Reset, using CONSULT III plus, on the next page.

Zero Point Reset

1. Prepare the vehicle for OCS zero point reset as follows:
 - **Level the vehicle.**
 - **No objects on the passenger seat or in the storage bin.**
 - **No occupants in the vehicle – including the servicing technician.**
 - PC is outside of the vehicle on a suitable support.
 - Do not set the PC on the vehicle.
 - Do not touch the vehicle during the OCS zero point reset.
 - Minimize vibrations of the vehicle.
2. Connect the plus VI to the vehicle.
3. Open / start CONSULT-III plus (C-III plus).
4. Turn the ignition ON, with engine OFF (engine not running/not in ready mode).
5. Wait for the plus VI to be recognized.
 - The Serial No. will display when the plus VI is recognized.
6. Select **Diagnosis (One System)**.
7. Scroll C-III plus (All systems) and select **OCCUPANT DETECTION**.

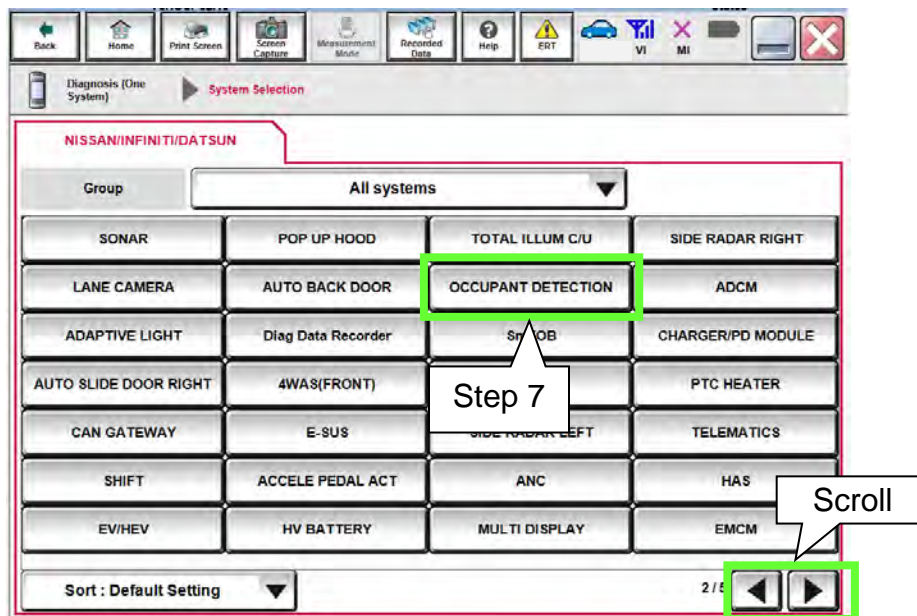


Figure 1A

8. Select **Zero point reset function**.

9. Select **Start**.

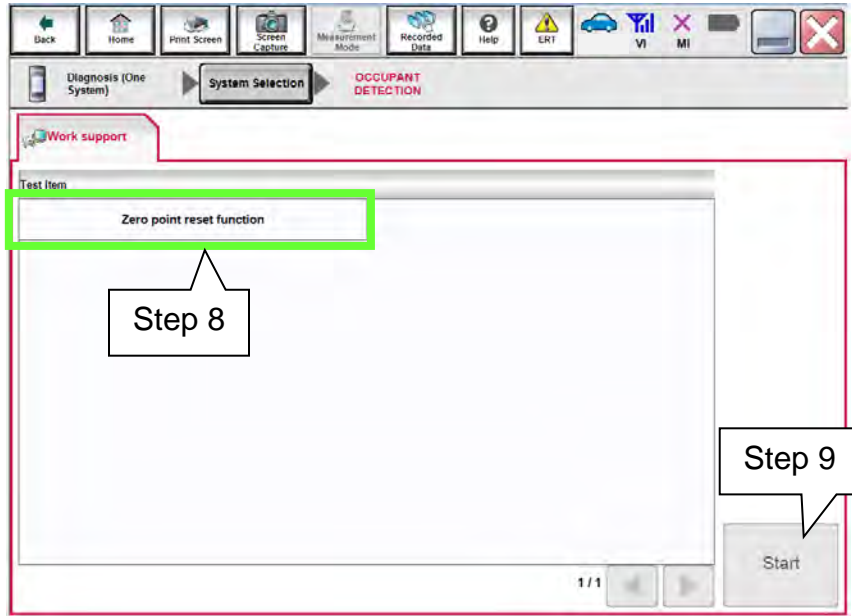


Figure 2A

10. Select **Next**.

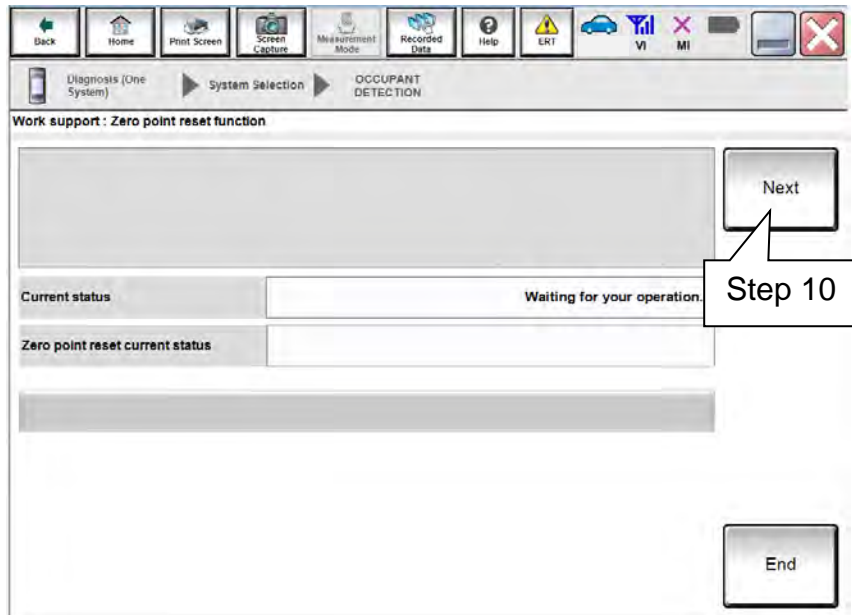


Figure 3A

11. Select **Start** and then proceed to step 12.

- After selecting **Start**, if Figure 5A is displayed:
 - a. Check the OCS control unit and confirm that harness connector is completely seated.
 - b. Turn the ignition OFF and then restart procedure from step 4 on page 15.

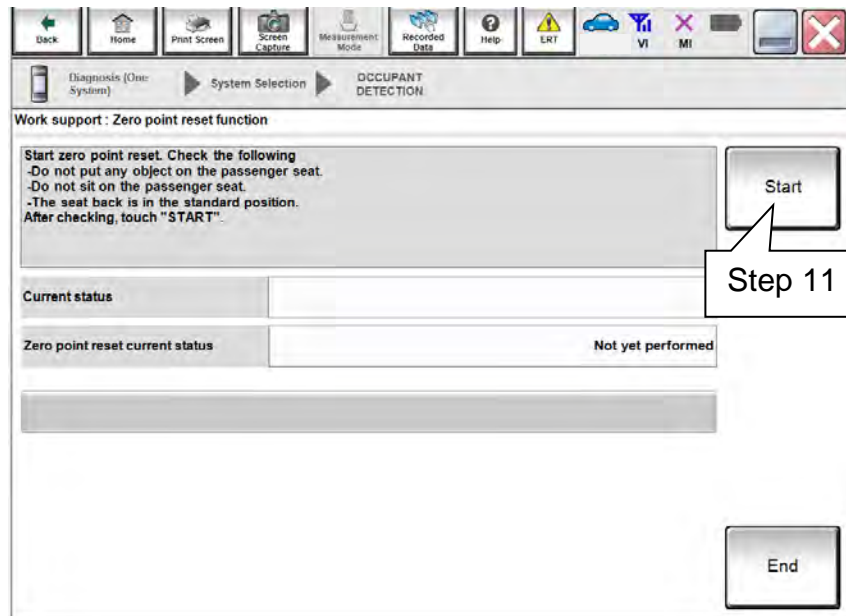


Figure 4A

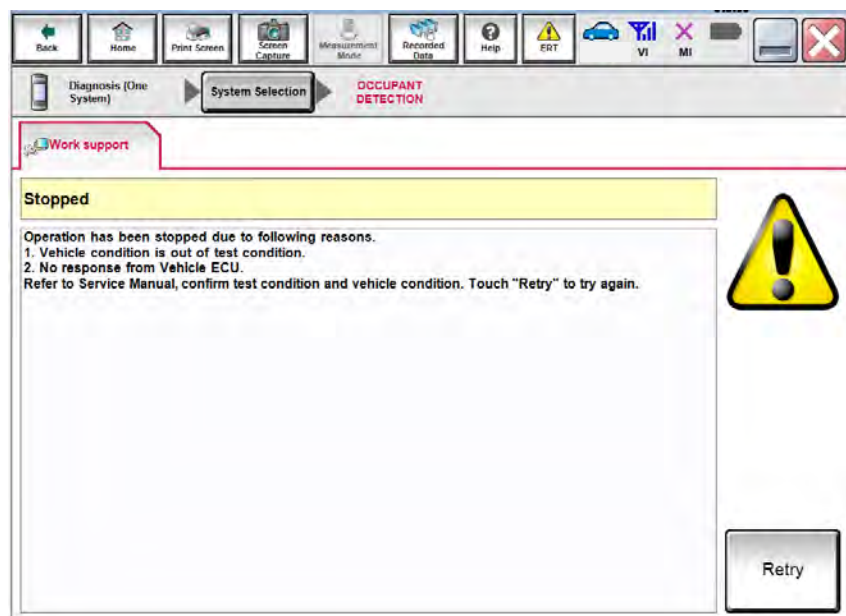


Figure 5A

12. Zero point reset will display “EXECUTING”.

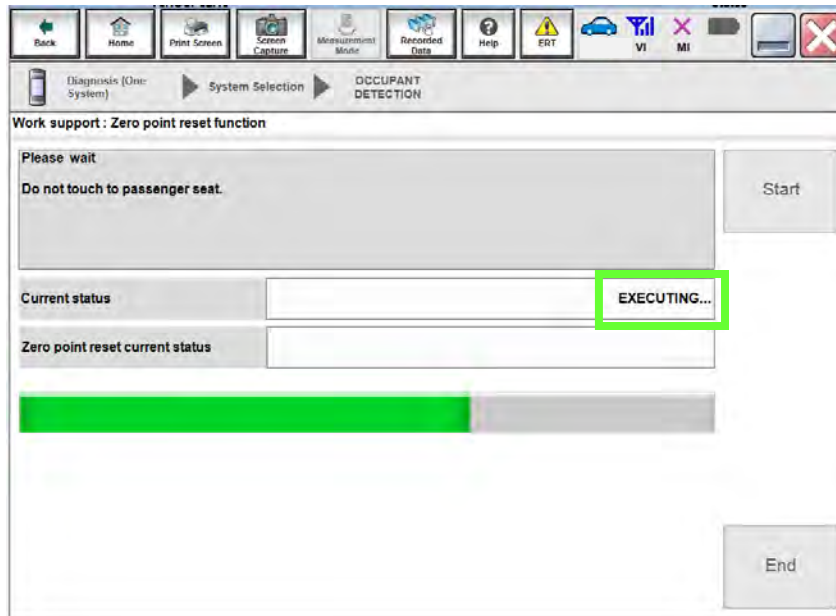


Figure 6A

13. When finished, "Completed" will display next to “Current status”.

- Select **End** and then proceed to step 14.

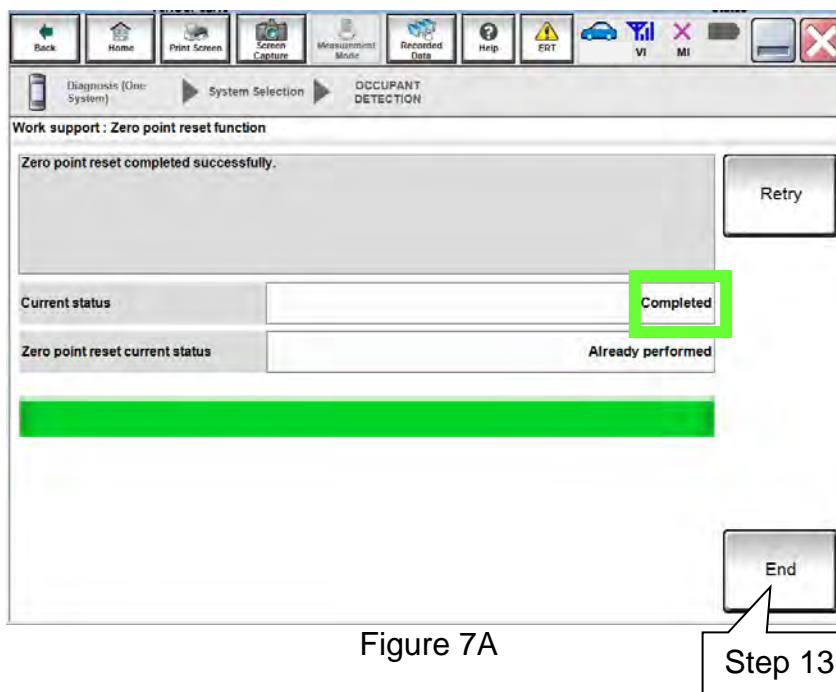




Figure 7A

Step 13

14. Turn the ignition OFF and then back ON and observe the air bag warning light and front passenger airbag status light:

- The air bag warning light  should illuminate for 7 seconds and then go out.
- The front passenger airbag status light  should illuminate for 7 seconds and then either stay illuminated or go out depending on the occupation of the front passenger seat.

Front Passenger Airbag Status Light Operation

CONDITION	DESCRIPTION	PASSENGER AIR BAG INDICATOR LIGHT	FRONT PASSENGER AIR BAG STATUS
Empty	Empty front passenger seat	ON (illuminated)	DISABLED
Nobody/Somebody	Bag or Child or Child Restraint or Small Adult in the front passenger seat	ON (illuminated)	DISABLED
Adult	Adult in front passenger seat	OFF (dark)	ENABLED

NOTE: If the air bag warning light or the front passenger airbag status light does not operate as described above there may be an issue not covered by this bulletin. Refer to ASIST and the appropriate Service Manual for additional diagnostic and repair information.

15. Provide the customer with a printed copy of FRONT PASSENGER AIR BAG STATUS LIGHT OPERATION (see last page).

PARTS INFORMATION

DESCRIPTION	PART NUMBER	QUANTITY
Controller Assy-Occupant Sensor (OCS Control Unit)	98856 – 9SE0A	1
Seatbelt Buckle – Black	86842 – 9SF8A	1
OCS Harness	87019 – 9SB1B	1

CLAIMS INFORMATION

Submit a “CM” line claim using the following claims coding:

CM ID	DESCRIPTION	OP CODE	FRT
P7322	Perform OCS Retrofit	P73221	1.0 hr.



NOTE: Please print this page and place a copy in the vehicle.

OCS SYSTEM OPERATION

The OCS system enables or disables the front passenger air bag depending on the weight applied to the front passenger seat. Front passenger air bag status (Enabled or Disabled) is indicated by the front passenger air bag status lamp pictured here →



- When the front passenger seat is empty, the passenger air bag status lamp should be ON (illuminated) which means the passenger air bag is Disabled.
- When the front passenger seat is occupied by an adult, the passenger air bag status lamp should be OFF (dark) which means the passenger air bag is Enabled.
- When the front passenger seat is occupied by a child, a child restraint, or a small adult, the passenger air bag status lamp should be ON (illuminated) which means the passenger air bag is Disabled.

CONDITION	DESCRIPTION	PASSENGER AIR BAG INDICATOR LIGHT	FRONT PASSENGER AIR BAG STATUS
Empty	Empty front passenger seat	ON (illuminated)	DISABLED
Nobody/Somebody	Bag or Child or Child Restraint or Small Adult in the front passenger seat	ON (illuminated)	DISABLED
Adult	Adult in front passenger seat	OFF (dark)	ENABLED