



# SERVICE BULLETIN

Classification: BR18-002a	Reference: NTB18-013a	Date: February 28, 2018
------------------------------	--------------------------	----------------------------

## 2017 ARMADA; DTC C1116 AND VDC WARNING LAMP ON

This bulletin has been amended. The CLAIMS INFORMATION section has been corrected. No other changes have been made. Please discard previous versions of this bulletin.

**APPLIED VEHICLES:** 2016 -2017 Armada (Y62) equipped with Distance Control Assist (DCA)

**APPLIED VIN // DATE** 2016 Armada: All VINs and Dates  
 2017 Armada:  
 2WD Built on or before JN8AY2N(\*)H9 304268 // April 20, 2017  
 4WD Built on or before JN8AY2N(\*)H9 707140 // April 20, 2017

**NOTE:** Distance Control Assist (DCA) equipped vehicles can be identified by the dynamic driver assistance switch on the steering wheel as shown in Figure A.




Figure A

### IF YOU CONFIRM

DTC C1116 (STOP LAMP SW) is stored (Past or Current),

### AND

Customer stated VDC warning lamp  was illuminated.

### ACTION

Reprogram the ABS control unit (ABS) per the Service Procedure in this bulletin.

- Refer to step 20 on page 8 to confirm that reprogramming is needed.

**IMPORTANT:** The purpose of ACTION (above) is to give you a quick idea of the work you will be performing. You MUST closely follow the entire SERVICE PROCEDURE as it contains information that is essential to successfully completing this repair.

Nissan Bulletins are intended for use by qualified technicians, not 'do-it-yourselfers'. Qualified technicians are properly trained individuals who have the equipment, tools, safety instruction, and know-how to do a job properly and safely. NOTE: If you believe that a described condition may apply to a particular vehicle, DO NOT assume that it does. See your Nissan dealer to determine if this applies to your vehicle

## SERVICE PROCEDURE

**IMPORTANT: Before starting, make sure:**

- **ASIST on the CONSULT PC has been synchronized to the current date.**
- **All CONSULT-III plus (C-III plus) software updates (if any) have been installed.**

**NOTE:** The CONSULT PC automatically gets applicable reprogramming data during ASIST synchronization.

- **The CONSULT PC is connected to the internet via a cable or Wi-Fi.**
  - Later in the procedure you will be required to enter your User Name and Password.
  - The CONSULT PC must be connected to the Internet.
  - If you do not know your User Name and Password, contact your Service Manager.
- A screen print for Warranty documentation can be done from the CONSULT PC during this process while still connected to the vehicle.
- **No DTCs stored.**
  - Use C-III plus to perform Self Diagnosis for all systems.
  - If there are any DTCs other than C1116, diagnose, perform repairs, and erase DTCs **before** continuing.
  - If only DTC C1116 is stored, erase DTC before continuing.

1. Connect the plus VI to the vehicle.

**CAUTION: Make sure the plus VI is securely connected. If the plus VI connection is loose during reprogramming, the process will be interrupted and the the control unit may be damaged.**

2. Connect the AC Adapter to the CONSULT PC.

**CAUTION: Be sure to connect the AC Adapter. If the CONSULT PC battery voltage drops during reprogramming, the process will be interrupted and the control unit may be damaged.**

3. Connect the GR8 and set to “Power Supply” mode.

**CAUTION:** Be sure the battery charger is connected securely to the battery. Make sure the battery voltage stays between 12.0V and 15.5V during reprogramming. If the battery voltage goes out of this range during reprogramming, the control unit **may be damaged**.

4. Turn OFF all external Bluetooth® devices (e.g., cell phones, printers, etc.) within range of the CONSULT PC and the VI.

**CAUTION:** Make sure to turn OFF all external Bluetooth® devices. If Bluetooth® signal waves are within range of the CONSULT PC and the VI during reprogramming, reprogramming may be interrupted, and the control unit **may be damaged**.

5. Turn the ignition ON with the engine OFF.

- **The engine must not start or run during the reprogramming procedure.**

6. Turn OFF all vehicle electrical loads such as exterior lights, interior lights, HVAC, blower, rear defogger, audio, NAVI, seat heater, steering wheel heater, etc.

**IMPORTANT:** Make sure to turn OFF all vehicle electrical loads. Make sure the battery voltage stays between 12.0V and 15.5V during reprogramming. If the battery voltage goes out of this range during reprogramming the control unit **may be damaged**.

7. Turn ON the CONSULT PC.

8. Select CONSULT-III plus (open C-III plus).

9. Wait for the plus VI to be recognized.

- Serial number will display when the plus VI is recognized.

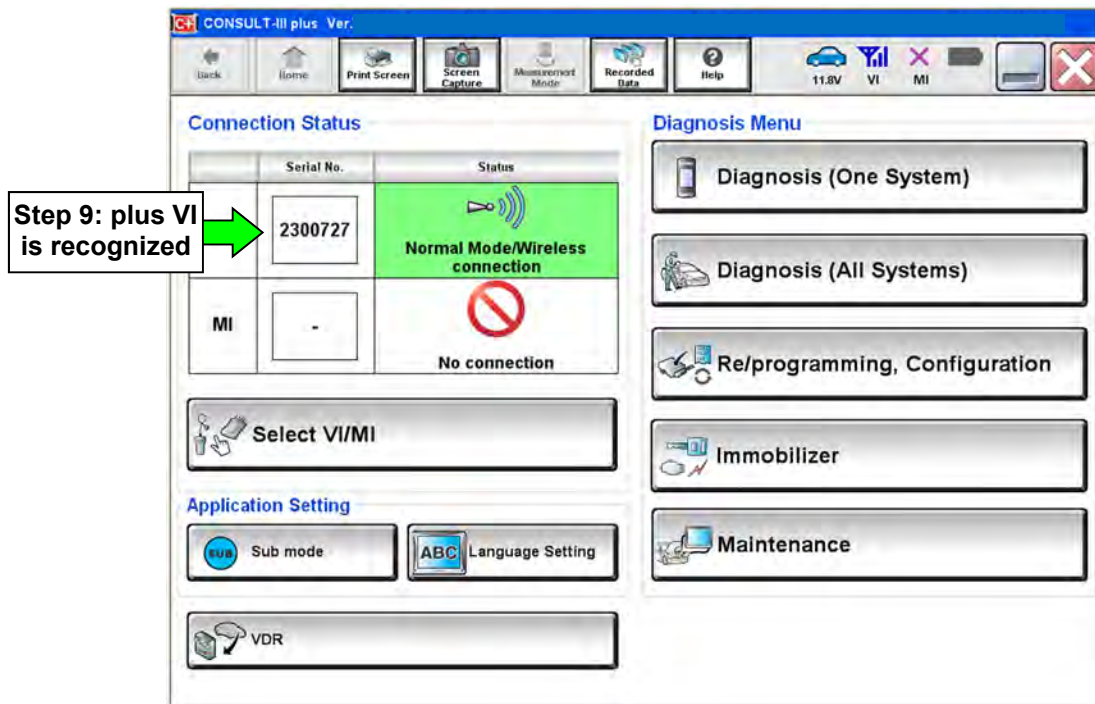


Figure 1

10. Select **Re/programming, Configuration**.

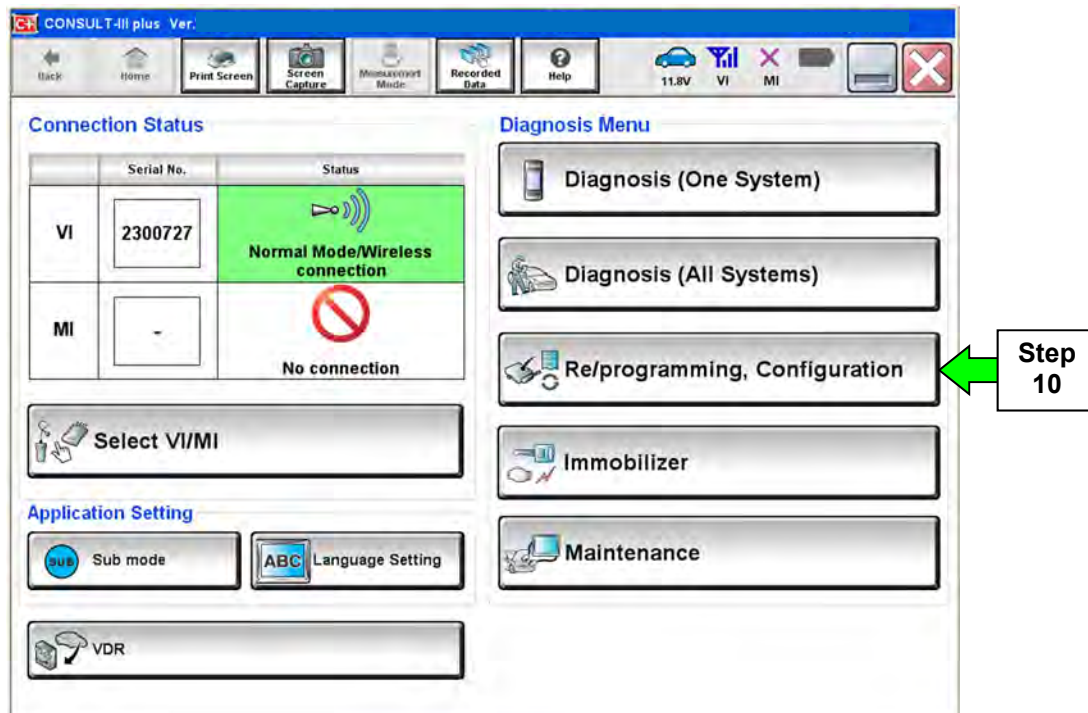


Figure 2

11. Use arrows (if needed) to view and read all precautions.
12. Check the box confirming the precautions have been read.
13. Select **Next**.

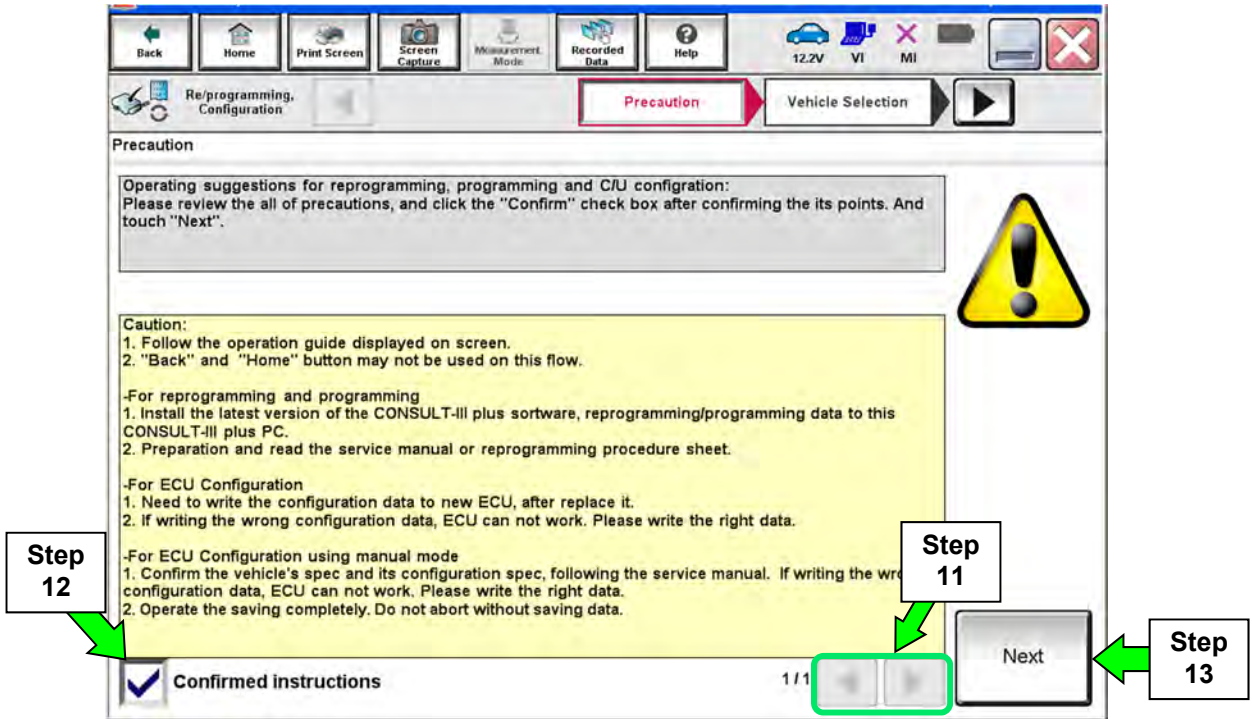


Figure 3

14. If the screen in Figure 4 displays, select **Automatic Selection(VIN)**.

- If the screen in Figure 4 does not display, skip to step 15.

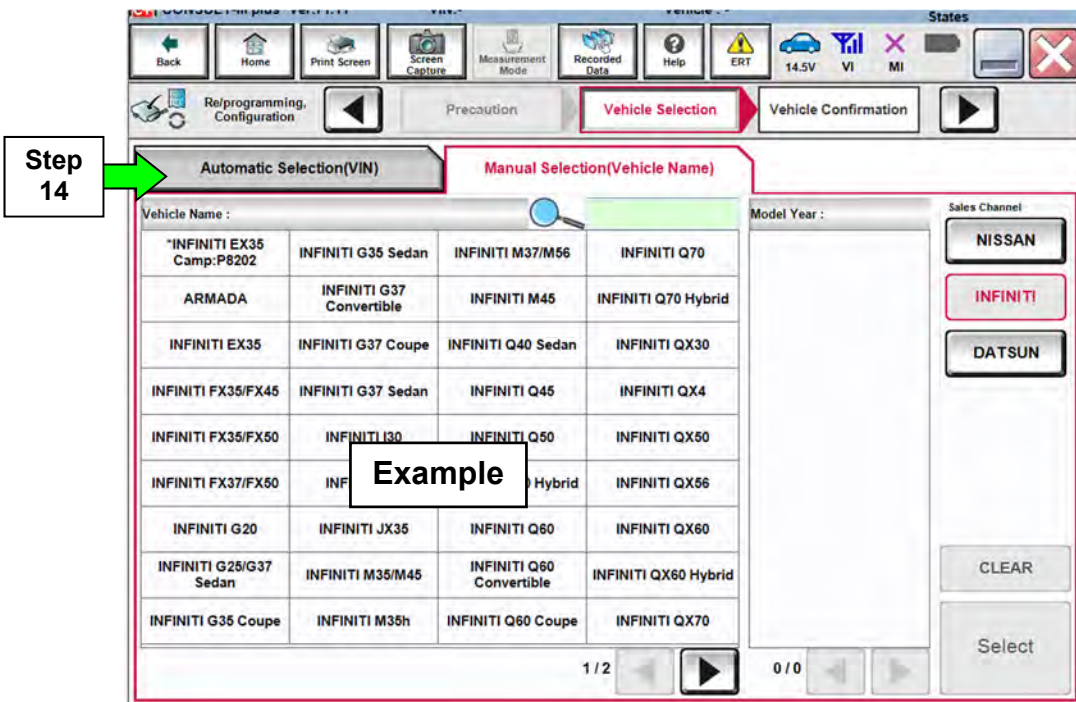


Figure 4

15. Verify the VIN or Chassis # matches that of the vehicle.

16. If the correct VIN is displayed, select **Confirm**.

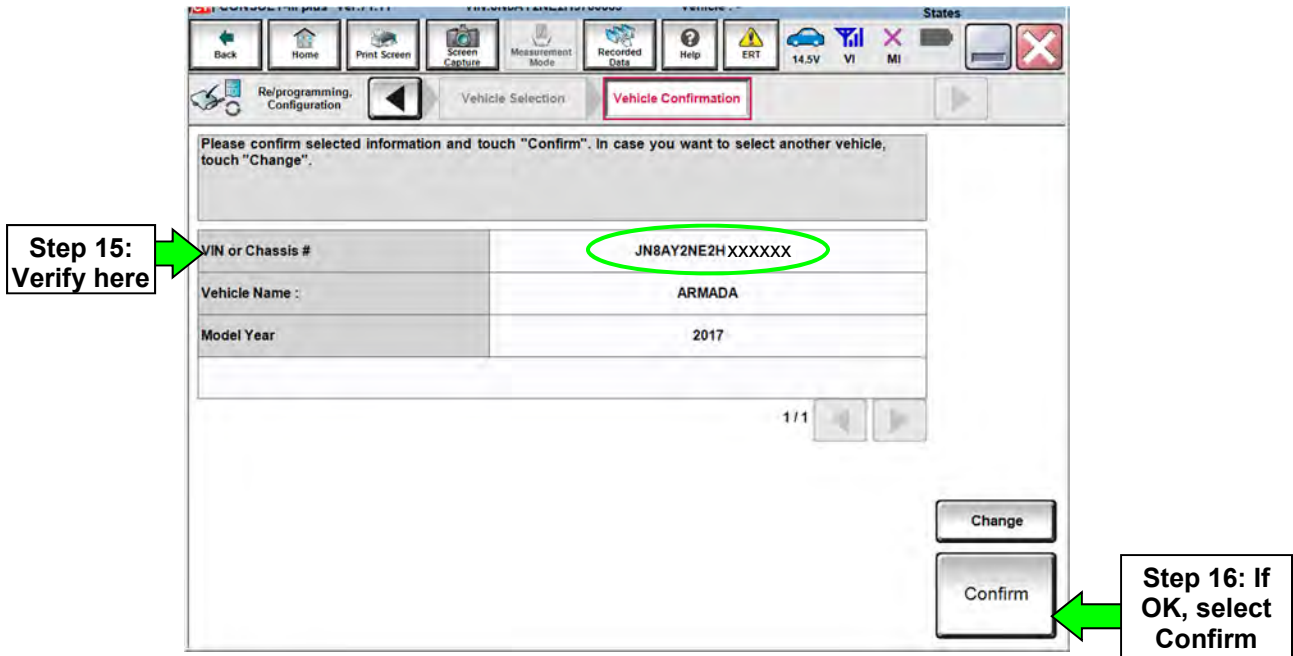


Figure 5

17. Select **Confirm** again.

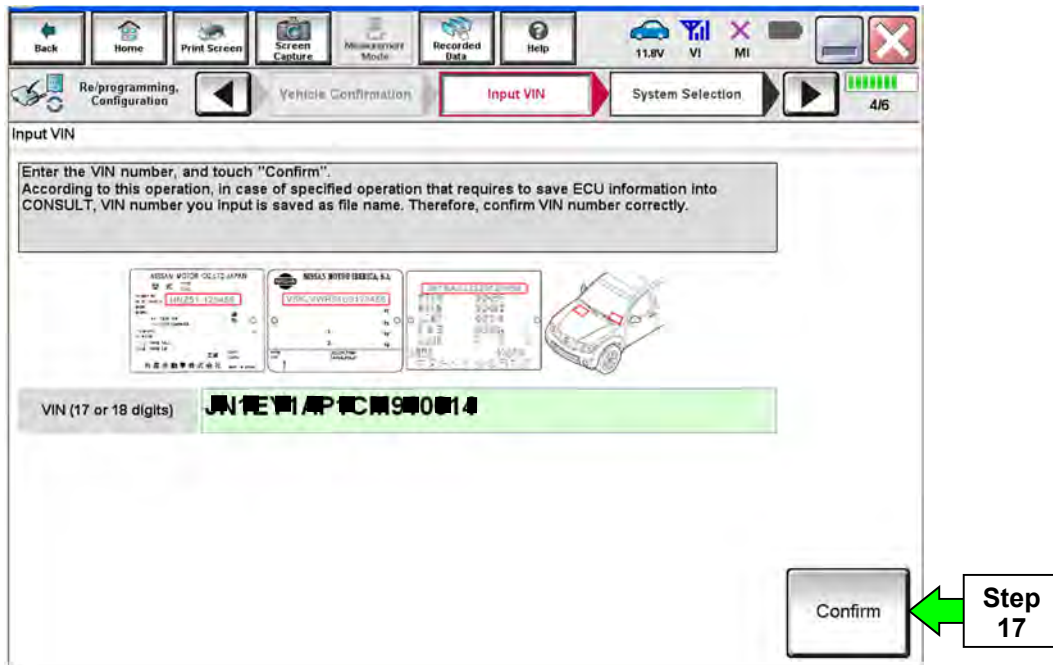


Figure 6

18. Select **ABS**.

- Use the scroll arrows as needed.

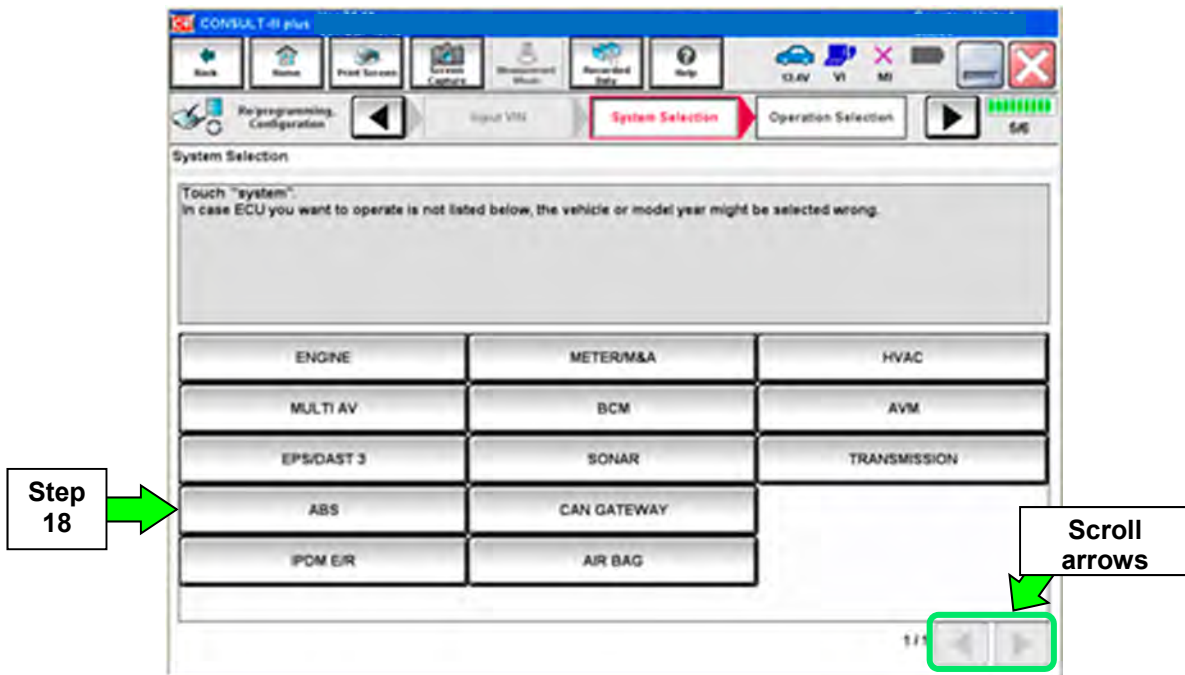


Figure 7

19. Wait for System Call to complete and then select **Reprogramming**.

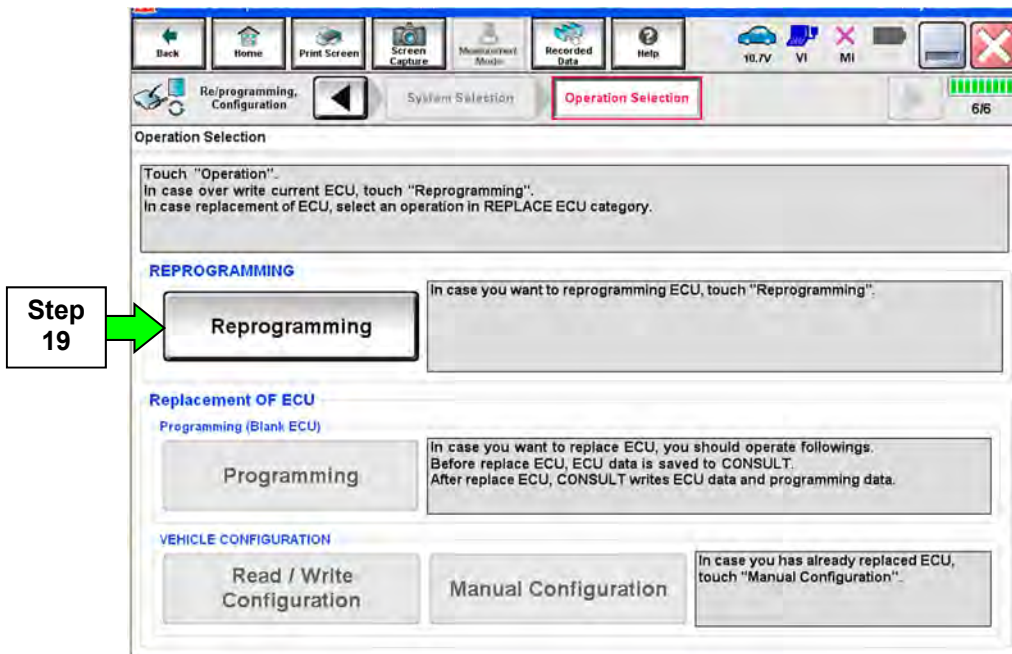


Figure 8

20. When you get to the screen shown in Figure 9, confirm reprogramming applies as follows:

- a. Find the ABS Part Number and write it on the repair order.  
**NOTE:** This is the current ABS Control Unit Part Number.

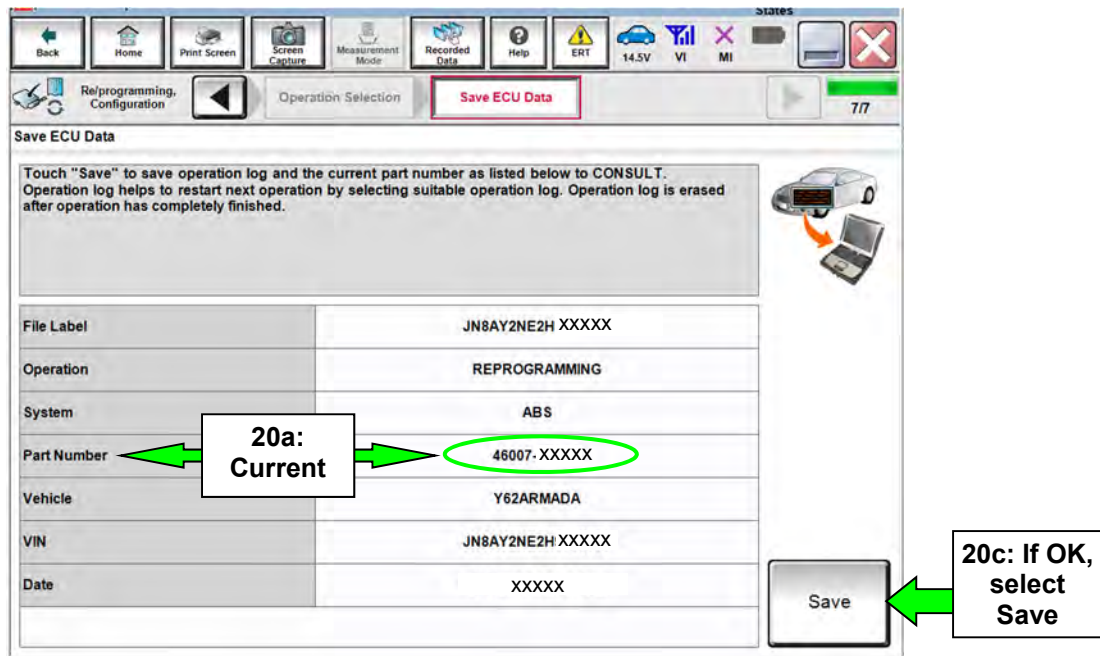


Figure 9

- b. Compare the P/N you wrote down to the numbers in the **Current Part Number** column of **Table A** below:
  - If there is a match, this bulletin applies. Continue with the reprogramming procedure on the next page.
  - If there is not a match, this bulletin does not apply. Close C-III plus and check ASIST for further diagnostic and repair information.
- c. If there is a part number match as specified below, select **Save** and then continue with the reprogramming procedure on the next page.

Table A

MODEL	CURRENT PART NUMBER:
2017 ARMADA	46007-5ZA1B
	46007-5ZA1C
	46007-5ZA3B
	46007-5ZA3C



21. Use arrows (if needed) to view and read all precautions.
22. Check the box confirming the precautions have been read.
23. Select **Next**.

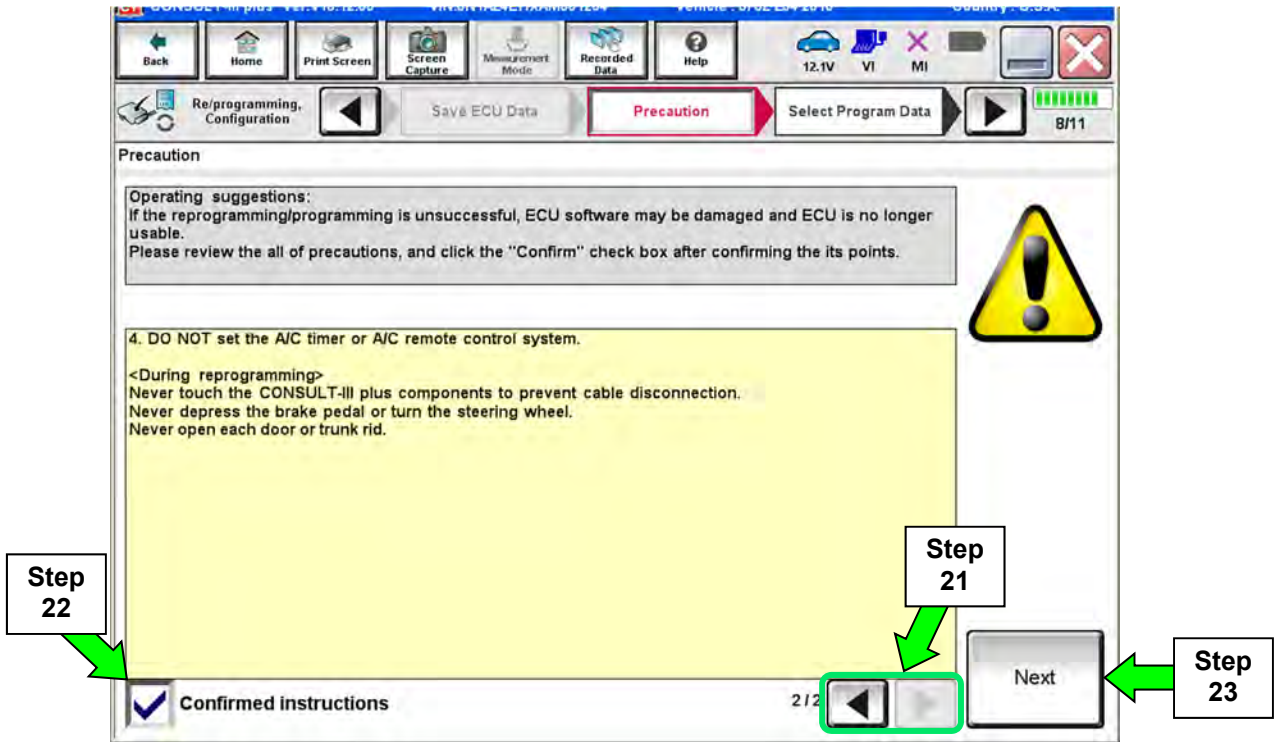


Figure 10

24. Read the **Current Part Number** and **Part Number After Reprogramming**. They should be different.
25. Select **Next**.

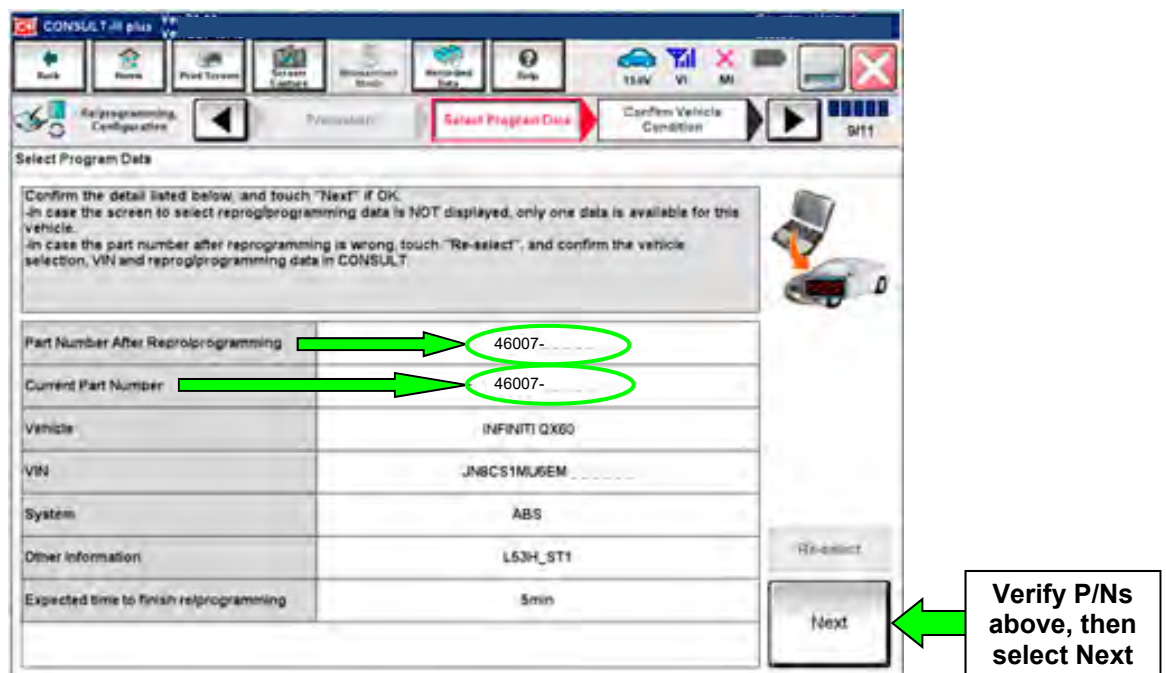


Figure 11

26. Confirm battery voltage is correct, and then select **Next**.

**NOTE:** Battery voltage must stay within the specified range to make the indicator turn green.

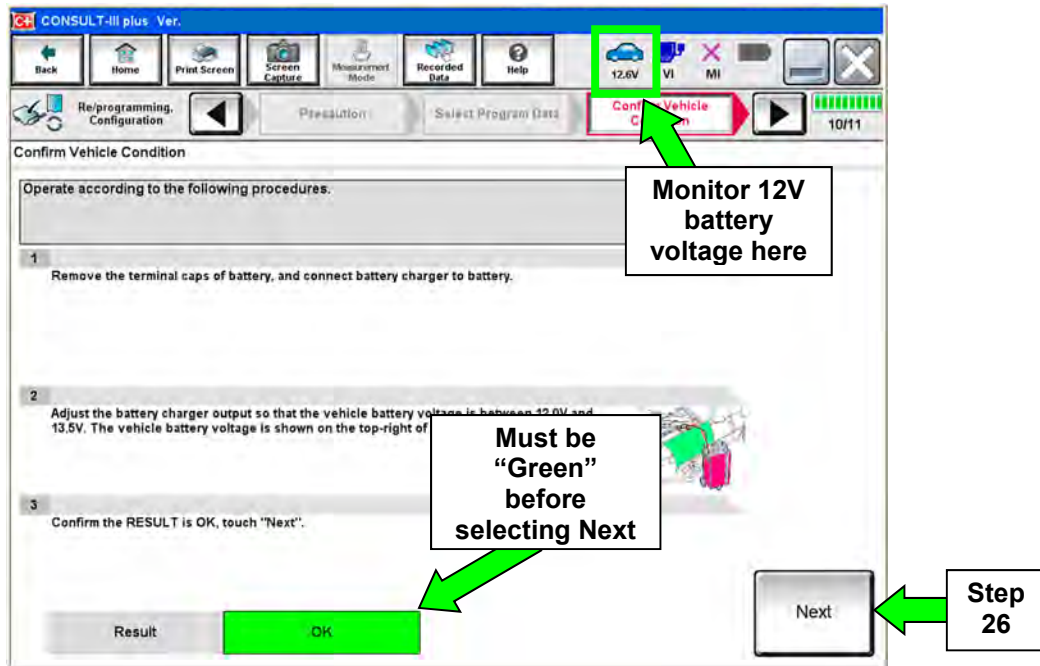


Figure 12

27. Make sure OK is highlighted **green** and select **Start**.

**IMPORTANT:** Battery voltage must stay between **12.0 and 15.5 Volts** during reprogramming or reprogramming may be interrupted and the control unit may be damaged.

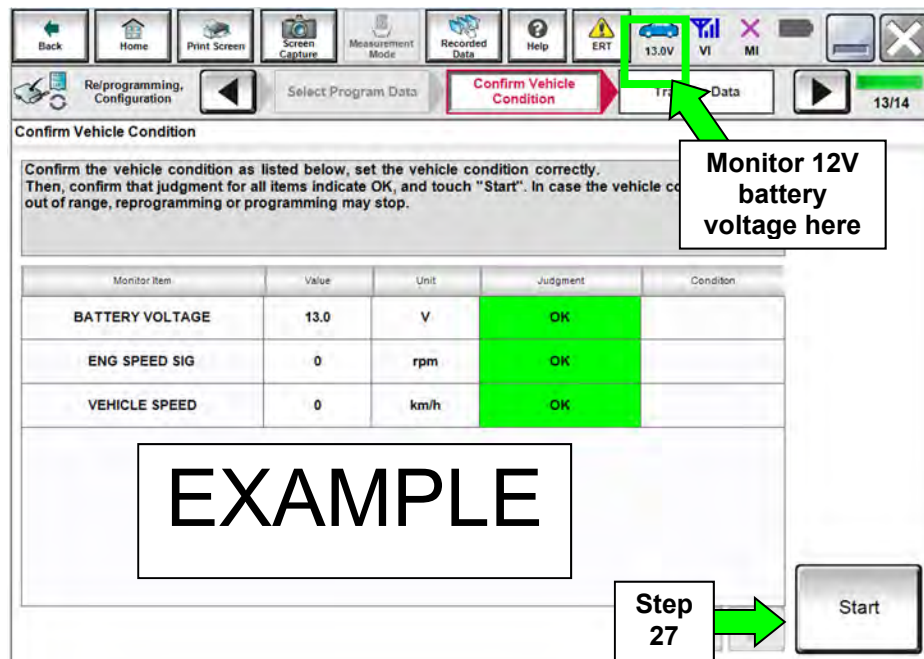


Figure 13

28. Select **USA/CANADA Dealers**.

29. Select **OK**.

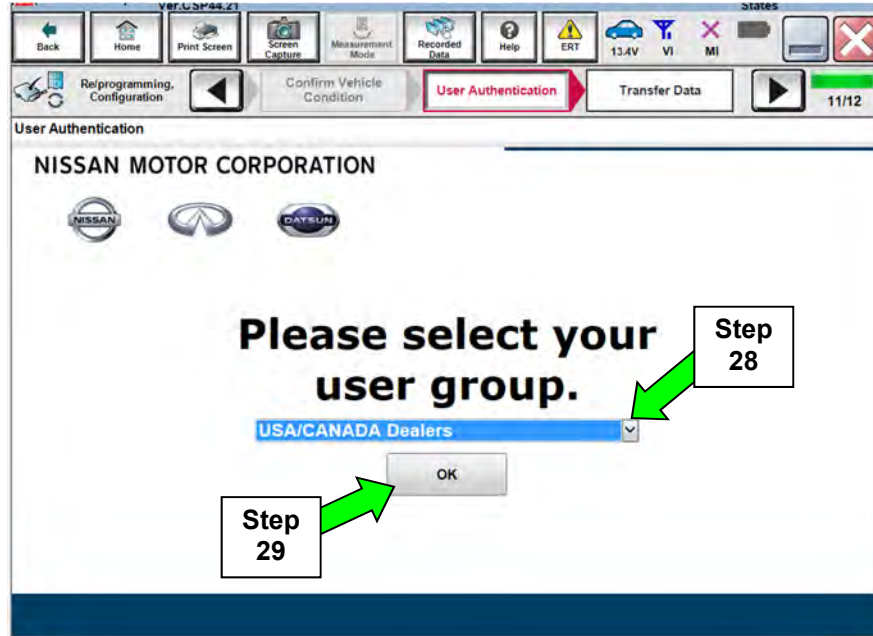


Figure 14

**NOTE:**

- The above screen may not display if the CONSULT PC has remained ON since the last reprogramming.
- If the CONSULT PC is not connected to the Internet, the screen in Figure 15 will display.

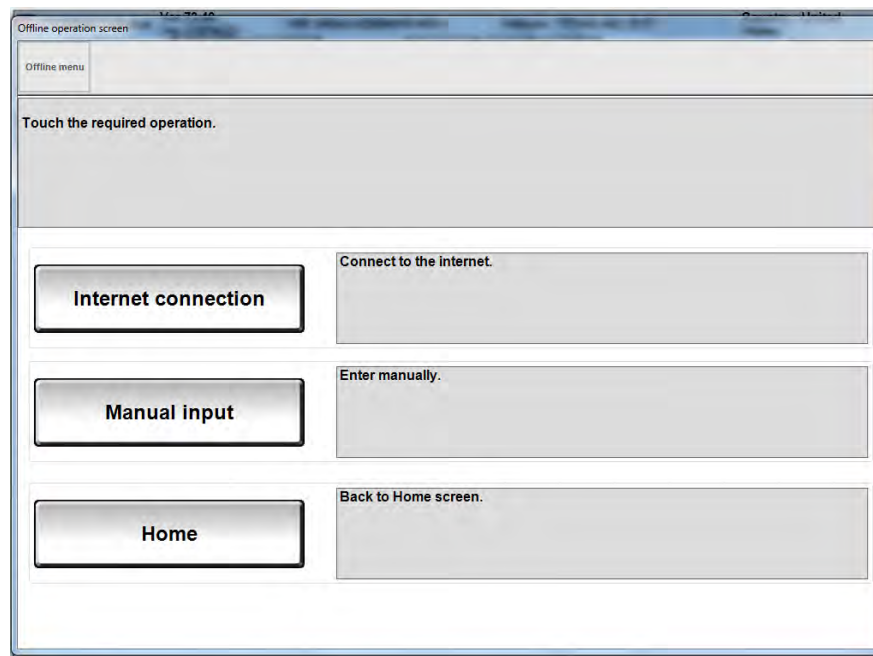


Figure 15

### 30. Enter Username and Password.

- The CONSULT PC must be connected to the Internet (Wi-Fi or cable).
- Before reprogramming will start, you will be required to enter your User Name and Password.
- If you do not know your User Name and Password, contact your Service Manager.

### 31. Select **Submit**.

- There will be a short pause while the username and password are authenticated.
- Once authentication completes, TCM reprogramming will automatically begin and the screen in Figure 17 on the next page will be displayed.

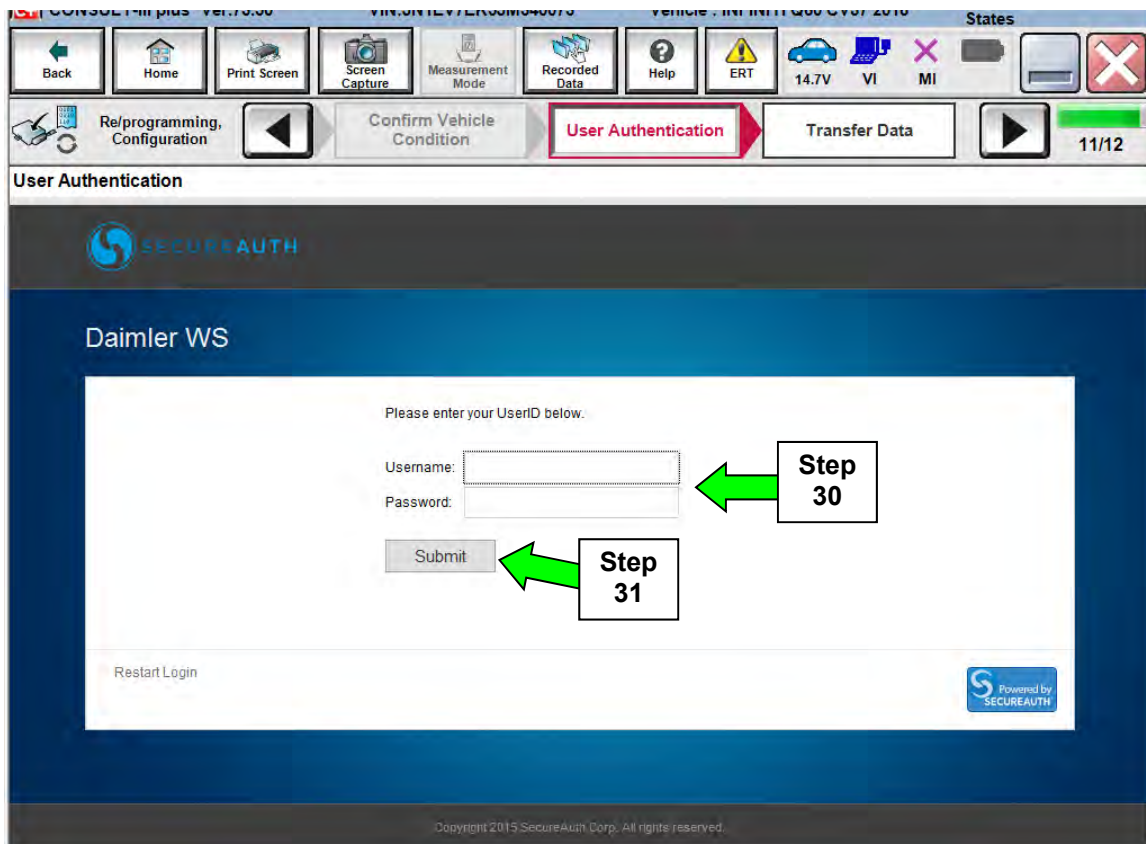


Figure 16

32. Wait for both progress bars to complete.

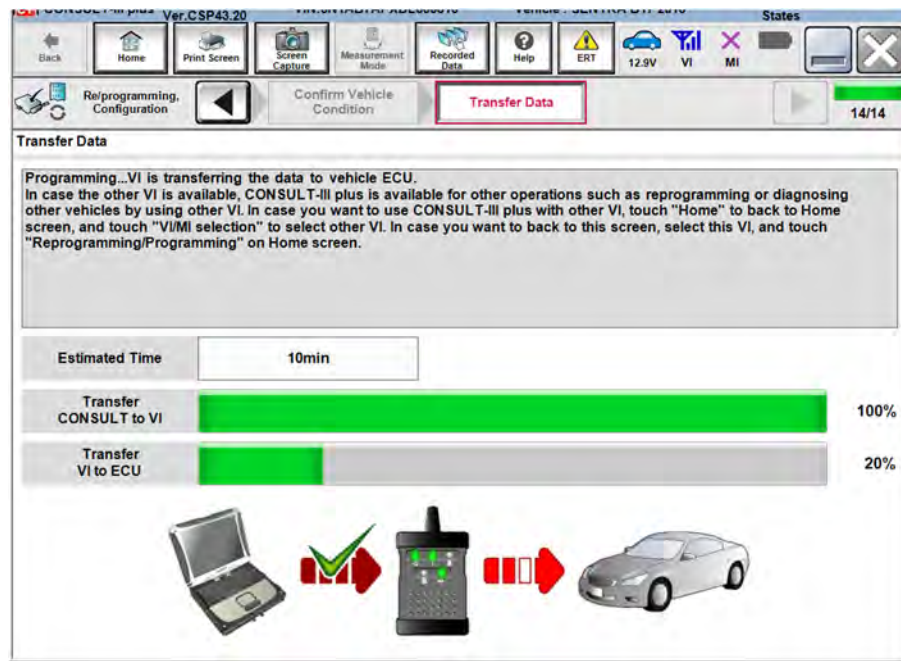


Figure 17

33. When the screen in Figure 18 displays, the reprogramming is complete.

**NOTE:** If the screen in Figure 18 does not display (reprogramming does not complete), refer to the information on the next page.

34. Disconnect the battery charger from the vehicle.

35. Select **Next**.

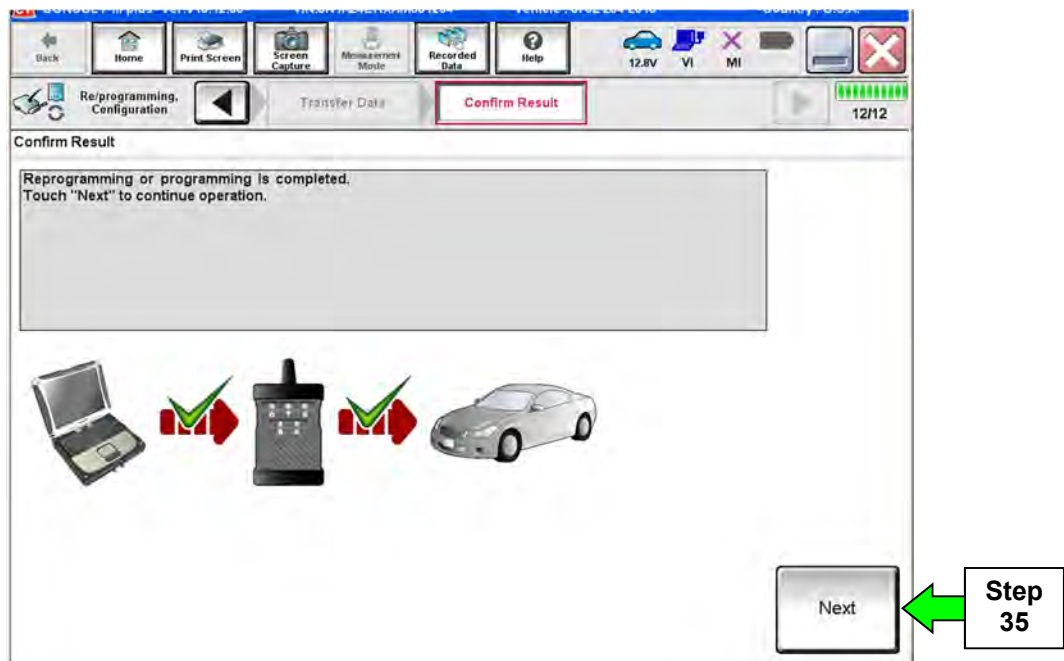


Figure 18

**NOTE:** DTC Erase must be performed before C-III plus will provide the final reprogramming confirmation report. Continue with the reprogramming procedure on page 15.

## Control Unit Recovery:

Do not disconnect plus VI or shut down CONSULT-III plus if reprogramming does not complete.

If reprogramming does not complete and the “!?” icon displays as shown in Figure 19:

- Check battery voltage (12.0–15.5 V).
- Ignition is ON, engine OFF.
- External Bluetooth® devices are OFF.
- All electrical loads are OFF.
- **Select retry and follow the on screen instructions.**
- “Retry” may not go through on the first attempt and can be selected more than once.

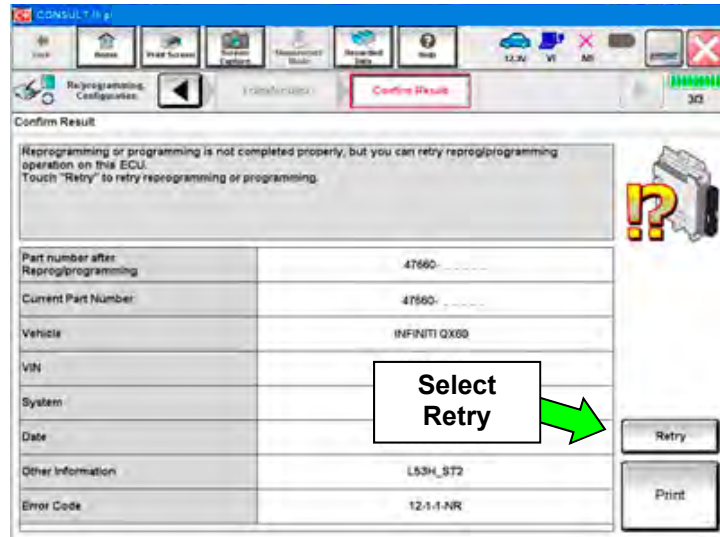


Figure 19

If reprogramming does not complete and the “X” icon displays as shown in Figure 20:

- Check battery voltage (12.0 – 15.5 V).
- CONSULT A/C adapter is plugged in.
- Ignition is ON, engine OFF.
- Transmission is in Park.
- All C-III plus / VI cables are securely connected.
- All C-III plus updates are installed.
- **Select Home, and restart the reprogram procedure from the beginning.**

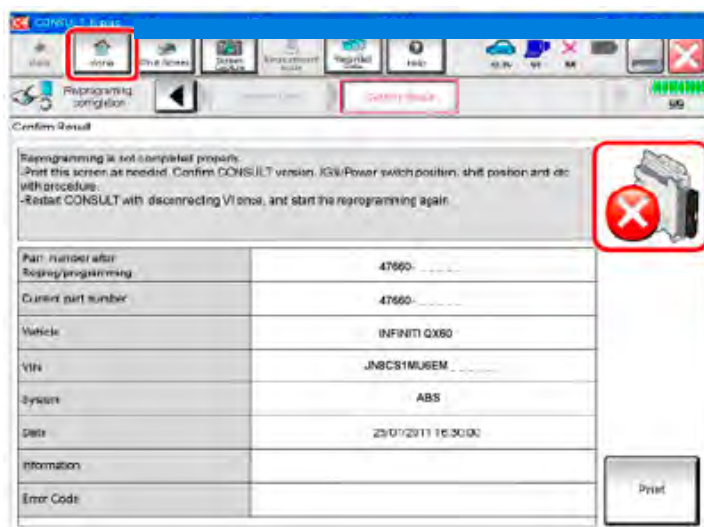


Figure 20

36. **Erase all DTCs** as follows:

- a. Turn the ignition OFF.
- b. Turn the ignition ON engine OFF.
- c. Wait for DTC erase to complete.

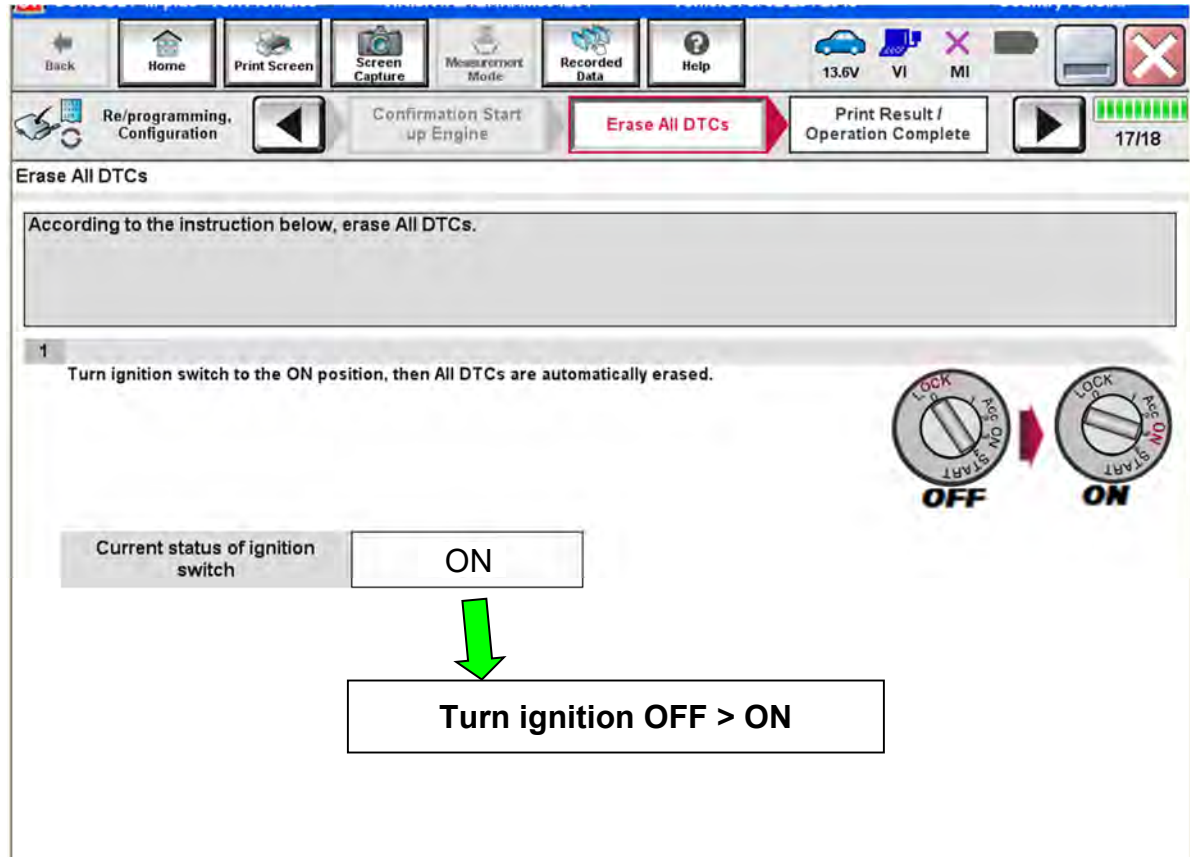


Figure 21

37. Verify the part number has changed (before and after reprogramming part numbers should be different).
- Print a copy of the screen in Figure 22 by selecting **Print**.
  - Attach the copy to the repair order.
  - Once a copy has been printed, select **Confirm**.

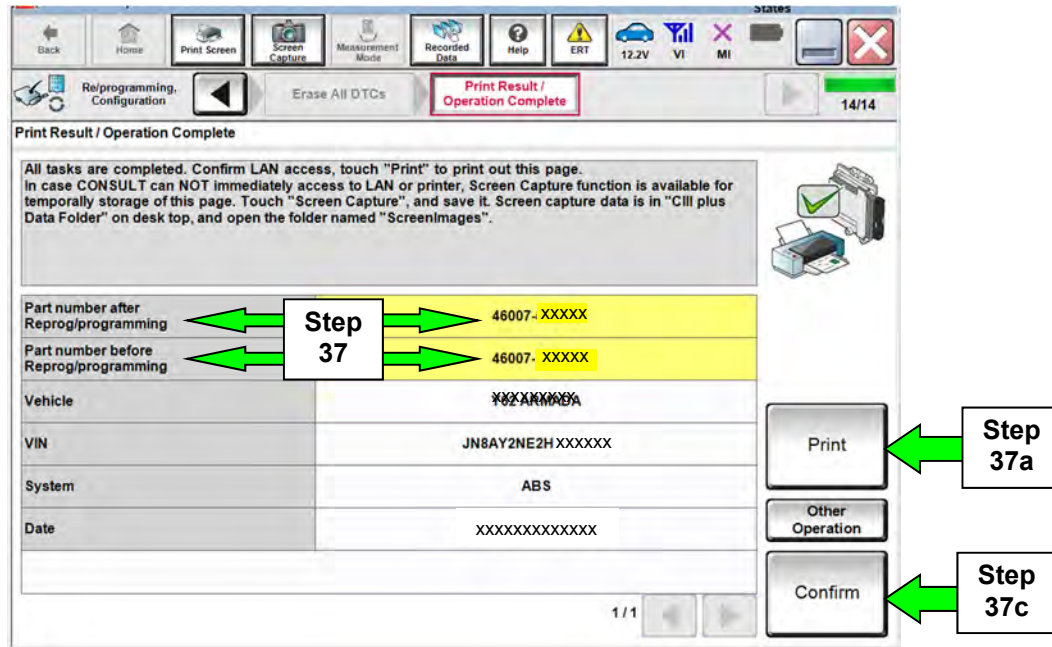


Figure 22

**NOTE:** If you cannot print the above screen:

- Select **Screen Capture**.
- Name the file.
- Save the file in **My Documents**.
  - A copy of the screen is now saved in the CONSULT PC. It can be retrieved and printed at a later time.

38. After Confirmation has completed:

- Select **Home**, close C-III plus, and disconnect from the vehicle.
- Close C-III plus.
- Turn the ignition OFF.
- Disconnect the plus VI from the vehicle.

39. Confirm operation of stop lamp switch by applying brakes and observing stop lamps illuminating.



## CLAIMS INFORMATION

Submit a Primary Part (PP) type line claim using the following claims coding;

DESCRIPTION	PFP	OP CODE	SYM	DIA	FRT
Reprogram ABS control unit	(1)	PX85AA	HC	32	0.5 hrs.

(1) Refer to the electronic parts catalog (FAST or equivalent) and use the appropriate CONTROLLER ASSY – BRAKE (ABS control unit) part number (46007-XXXXX) as the Primary Failed Part (PFP).

