



Technical Service Bulletin

| | | | |
|--|---|--|---|
| SUBJECT: | | | No: TSB-18-00-001 |
| NEW MODEL FEATURES & SERVICE INFORMATION – 2018 ECLIPSE CROSS | | | DATE: February 2018 |
| | | | MODEL: 2018 Eclipse Cross |
| CIRCULATE TO: | <input type="checkbox"/> GENERAL MANAGER | <input checked="" type="checkbox"/> PARTS MANAGER | <input checked="" type="checkbox"/> TECHNICIAN |
| <input checked="" type="checkbox"/> SERVICE ADVISOR | <input checked="" type="checkbox"/> SERVICE MANAGER | <input checked="" type="checkbox"/> WARRANTY PROCESSOR | <input checked="" type="checkbox"/> SALES MANAGER |

PURPOSE



This bulletin contains important new model service information and features for the **2018** Eclipse Cross (U.S. models only). Review the details that follow to familiarize yourself regarding new features and options. Refer to the 2018 Eclipse Cross Service Manual on MEDIC, MDL, or CD (p/n MSCD-020B-2018), and the Owner's Manual for details on these and other features.

AFFECTED VEHICLES

2018 Eclipse Cross

U.S. MODEL LINEUP

| MODEL | ENGINE | TRANSMISSION |
|-------------|---|---------------------------------|
| ES (2WD) | 4B40 TC 1.5L MIVEC + Direct Injection Turbo Charger, 4 cylinder (L4) | F1CJC, CVT w/8-speed Sport Mode |
| ES (S-AWC) | | W1CJC, CVT w/8-speed Sport Mode |
| LE (S-AWC) | | |
| SE (S-AWC) | | |
| SEL (S-AWC) | | |

NEW FEATURE HIGHLIGHTS

| <u>ENGINE</u> | <u>COMMENTS</u> |
|--|------------------------------------|
| 1.5L MIVEC Direct Injection Turbo-Charged engine | Standard on all 2018 Eclipse Cross |

| <u>TRANSMISSION/DRIVE SYSTEM</u> | <u>COMMENTS</u> |
|---|--|
| CVT w/8-speed Sport Mode (model F1CJC for 2WD vehicles) | Standard on ES 2WD models |
| CVT w/8-speed Sport Mode (model W1CJC for AWD vehicles) | Standard on ES, SE, LE, SEL models equipped with Super All Wheel Control |
| Super All Wheel Control | Standard for all models equipped with S-AWC: ES, SE, LE, SEL. |

| <u>EXTERIOR</u> | <u>COMMENTS</u> |
|---|--------------------------------------|
| New Premium metallic paint: Red Diamond | Available for LE, SE, and SEL |
| New metallic paint color: Bronze Metallic | Available for all 2018 Eclipse Cross |
| LED headlights | Standard on SEL |
| Halogen headlights | Standard on ES, LE, and SE |
| Fog lights | Standard on all 2018 Eclipse Cross |
| LED running lights | Standard on all 2018 Eclipse Cross |
| Auto on/off headlights | Standard on SE and SEL |
| LED rear combination tail lights and high mount stoplight | Standard on all 2018 Eclipse Cross |
| Chrome upper grille | Standard on SE and SEL |
| Front bumper center: material black | Standard on ES and LE |
| Front bumper center: gloss black | Standard on SE and SEL |
| Silver front and rear bumper under garnish | Standard on SE and SEL |
| Black front and rear bumper under garnish | Standard on ES and LE |
| Black lower door trim with silver accent | Standard on SE and SEL |
| Black side-view mirrors w/turn indicators | Standard on LE |
| Power folding side-view mirrors | Standard on SE and SEL |
| Heated side-view mirrors | Standard on all 2018 Eclipse Cross |
| Front windshield rain-sensing wipers | Standard on SE and SEL |
| 18-inch two-tone alloy wheels | Standard on SE and SEL |
| 18-inch black alloy wheels | Standard on LE |
| 16-inch alloy wheels | Standard on ES |
| All-season tires | Standard on all 2018 Eclipse Cross |
| Dual-pane power panoramic sunroof | Optional for SEL |

| <u>INTERIOR</u> | <u>COMMENTS</u> |
|--|------------------------------------|
| 8-way power adjustable driver's seat | Standard on SEL |
| Rear seat slide & multiple recline functions | Standard on all 2018 Eclipse Cross |
| Heated rear seats | Optional for SEL |
| High-grade fabric seats w/contrast stitching | Standard on SE |
| Leather seating surfaces | Standard on SEL |
| Driver's seat back pocket | Standard on SEL |
| Extendable sun visors | Standard on all 2018 Eclipse Cross |
| Side mirror controls on driver's door | Standard on all 2018 Eclipse Cross |
| Soft-touch door trim insert | Standard on SE and SEL |

| <u>CONVENIENCE</u> | <u>COMMENTS</u> |
|--|-----------------------------|
| Mitsubishi Connect Telematics system w/Safeguard and Remote services (2-year trial subscription, App required) | Standard on SE and SEL |
| 7-inch Smartphone Link Thin-Display Audio (SDA) system w/touchpad controller | Standard on LE, SE, and SEL |
| Head Up Display (HUD) | Standard on SEL |

The systems in the following tables are essentially the same as those for other 2018 Mitsubishi models, and are available for 2018 Eclipse Cross models as noted below.

| <u>SUSPENSION</u> | <u>COMMENTS</u> |
|--|------------------------------------|
| Front: Mac Pherson strut with stabilizer bar | Standard on all 2018 Eclipse Cross |
| Rear: Multi-link with stabilizer bar | Standard on all 2018 Eclipse Cross |

| <u>STEERING</u> | <u>COMMENTS</u> |
|-------------------------------|------------------------------------|
| Electric Power Steering (EPS) | Standard on all 2018 Eclipse Cross |

| <u>INTERIOR</u> | <u>COMMENTS</u> |
|------------------------------------|----------------------------|
| 6-way adjustable driver's seat | Standard on ES, LE, and SE |
| 4-way adjustable passenger seat | Standard on ES, LE, and SE |
| Heated front seats | Standard on SE and SEL |
| Chrome-finished inner door handles | Standard on SE and SEL |

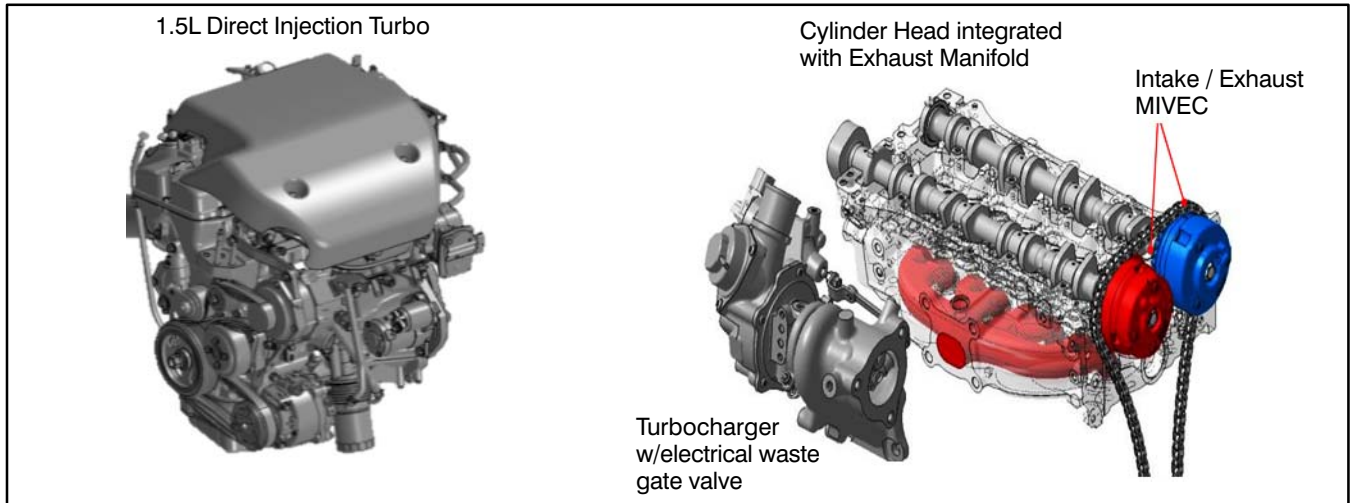
| <u>CONVENIENCE</u> | <u>COMMENTS</u> |
|---|------------------------------------|
| Multi-view camera system | Standard on SEL |
| Rear-view camera | Standard on ES, LE, and SE |
| 7-inch touchscreen Display Audio system | Standard on ES |
| Rockford-Fosgate® premium audio system with 9 speakers, 710 watts | Optional for SEL |
| Digital HD Radio® | Standard on all 2018 Eclipse Cross |
| Bluetooth® phone/audio | Standard on all 2018 Eclipse Cross |
| Apple CarPlay™/Android Auto™ compatibility | Standard on LE, SE, and SEL |
| Steering wheel audio & phone controls | Standard on all 2018 Eclipse Cross |
| Steering wheel voice controls | Standard on LE, SE, and SEL |
| Six speakers | Standard on SE and SEL |
| Auto-dimming rear view mirror w/Homelink® | Optional for SEL |
| FAST-key passive entry system w/push button start and panic feature | Standard on SE and SEL |
| Heated steering wheel | Optional for SEL |
| Leather-wrapped steering wheel & shift knobs | Standard on SE and SEL |
| Dual USB ports | Standard on LE, SE, and SEL |
| Power remote tailgate | Standard on all 2018 Eclipse Cross |
| Traction Control Logic (TCL), Active Stability Control (ASC), Hill Start Assist (HAS) | Standard on all 2018 Eclipse Cross |

| <u>SAFETY & SECURITY</u> | <u>COMMENTS</u> |
|---|------------------------------------|
| Electric parking brake switch w/Auto Hold | Standard on SE and SEL |
| Blind Spot Warning (BSW) with Lane Change Assist (LCA) and Rear Cross Traffic Alert (RCTA) | Standard on SE and SEL |
| Forward Collision Mitigation (FCM) | Optional for SEL |
| Auto High Beam (AHB) headlights | Optional for SEL |
| Lane Departure Warning (LDW) | Optional for SEL |
| Adaptive Cruise Control (ACC) | Optional for SEL |
| Anti-lock Braking System (ABS) w/Electronic Brakeforce Distribution (EBD) and Brake Assist (BA) | Standard on all 2018 Eclipse Cross |

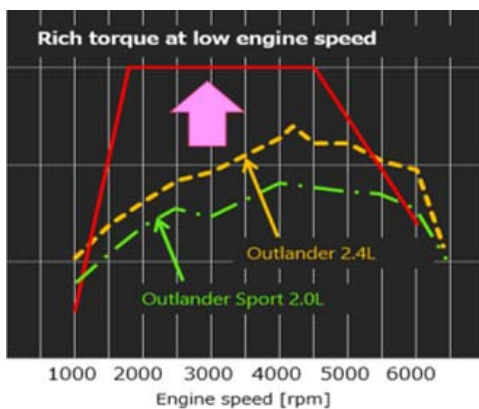
ENGINE

New 1.5L Direct Injection Turbo

All Eclipse Cross models are equipped with a brand new 1.5L Direct Injection turbocharged engine with an electrical waste gate valve.



Eclipse Cross Torque Curve
(compared to Outlander and Outlander Sport)



This turbo technology delivers a flat torque curve at very low rpm which provides quick acceleration response for confident driving, along with a smooth acceleration feeling from low to high speeds.

TRANSMISSION/DRIVE SYSTEM



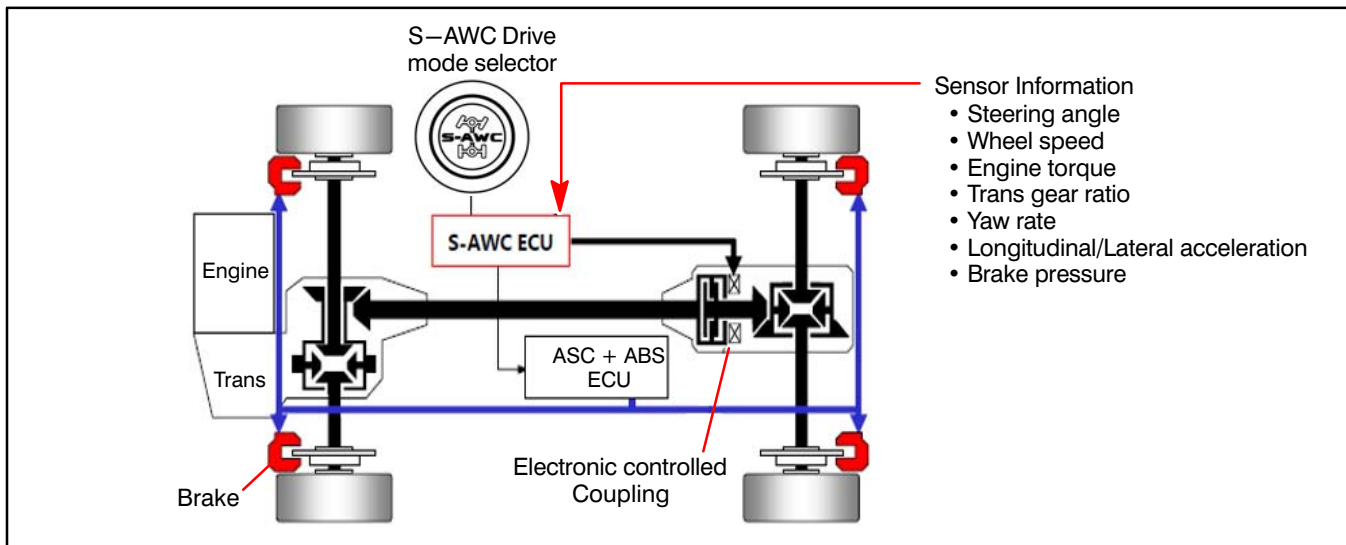
CVT with 8-Speed Sport Mode

All Eclipse Cross models have a CVT (continuously variable transmission) with 8-speed Sport Mode.

SEL models are equipped with paddle shifters on the steering wheel for easy shifting up and down.

Super All Wheel Control

Mitsubishi's Super All Wheel Control system is available on ES models, and comes standard on LE, SE, and SEL. This vehicle dynamics control system provides stable and responsive handling in all weather conditions and integrates several systems: Electronically controlled 4WD system, Active Stability Control (ASC), Anti-Lock Brakes (ABS), and Active Yaw Control (AYC) which distributes driving torque to rear wheels and between right and left side with additional assist using brake force to provide superior control.



EXTERIOR



New Red Diamond Premium Paint Color

A new premium paint color using a newly developed painting process is exclusively available for LE, SE, and SEL models.



New Bronze Metallic Paint Color

Another new paint color available for all Eclipse Cross models is Bronze Metallic.



LED Headlights

LED headlights are standard on SEL models. ES, LE, and SE come equipped with halogen headlights.



Front Fog Lights, LED Running Lights

Fog lights are standard equipment on all Eclipse Cross models, as well as LED running lights.

EXTERIOR (continued)



LED Rear Lights

Distinctive LED rear combination tail lights and an LED high mount stoplight are standard equipment on all Eclipse Cross models.



EXTERIOR (continued)



Front: Chrome Upper Grille

SE and SEL models have a stylish chrome upper grille and gloss black accent under the grille.

Front & Rear: Silver Bumper Under Garnish

SE and SEL models also have a silver bumper under garnish.



Black Lower Door Trim with Silver Accent

A stylish black lower door trim with a silver accent is standard on SE and SEL models.

Heated Side-View Mirrors

Heated side-view mirrors are standard equipment on all Eclipse Cross models.

In addition, SE and SEL have **power folding** side-view mirrors.

Front Windshield Rain-Sensing Wipers

SE and SEL come standard with rain sensing wipers in the front.

EXTERIOR (continued)

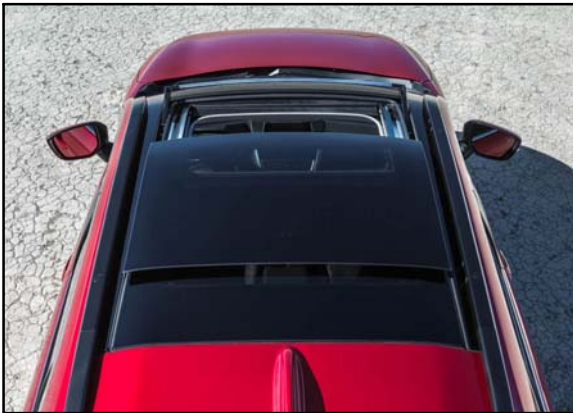


Alloy Wheels, All-Season Tires

Alloy wheels are standard equipment on all Eclipse Cross models, in the types noted below:

- SE, SEL: 18-inch two-tone alloy
- LE: 18-inch black alloy
- ES: 16-inch alloy

All-season tires are also standard on all Eclipse Cross models.



Dual-Pane Panoramic Sunroof

A dual-pane, large power sliding panoramic sunroof is available for SEL as part of the Touring Package.



INTERIOR



Power Adjustable Driver's Seat

Standard on SEL models is an 8-way power adjustable driver's seat. Other models have the 6-way adjustable driver's seat. All models have a 4-way adjustable front passenger seat.

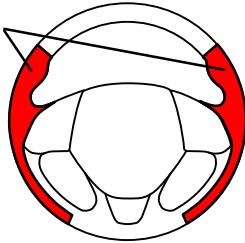
Leather Seats, Driver's Seat Back Pocket

Also standard on SEL models is leather seating (black with contrasting orange stitching), and a pocket in the back of the driver's seat.

Leather Shift Knob and Steering Wheel

SE and SEL come with a leather-wrapped shift knob and steering wheel.

Heated Area of
Steering Wheel
(SEL option)



Heated Steering Wheel

A heated steering wheel is optional on SEL models with the Touring Package.

High Grade Fabric Seats

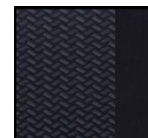
Standard seating on SE models is premium fabric with an embossed pattern and silver stitching. ES and LE come standard with a high grade knit fabric.

Seating Materials

SEL: Black Leather Seats w/Orange Stitching



ES, LE: High Grade Knit (Black)



SE: Embossed Premium Fabric
(Black or Gray w/Silver Stitching)



INTERIOR (continued)

Extendable Sun Visors

Standard on all Eclipse Cross models are extendable sun visors for more convenient and safer driving.

Extendable Sun Visors



Multiple Rear Seat Positions

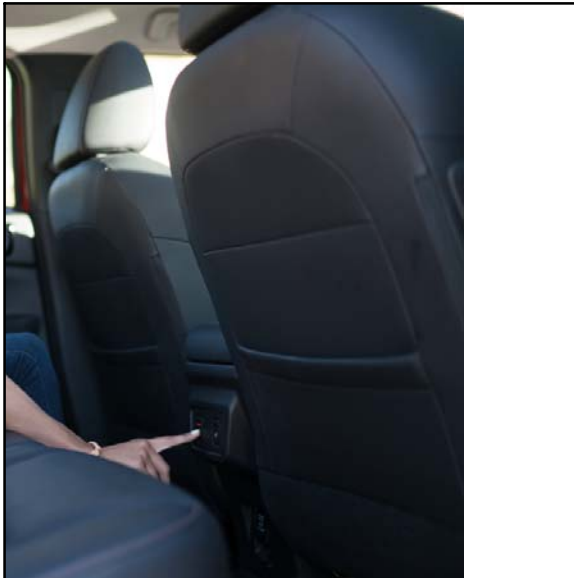
Standard on all Eclipse Cross models are multiple rear seat configurations.

The 60:40 split rear seats can slide up to 200 mm using the bar in the bottom front of each seat.

Rear seat reclining angle can be adjusted 16–32 inches with the shoulder levers.



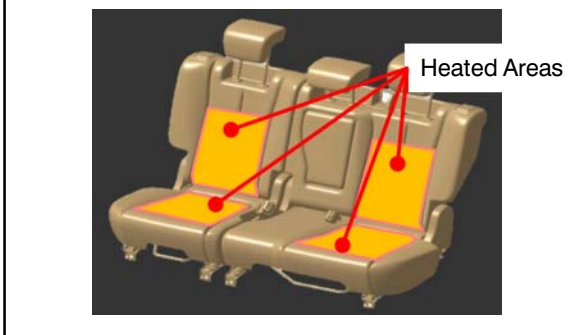
INTERIOR (continued)



Heated Rear Seats

Available for SEL with the Touring Package are rear seat heaters.

The seat heater switches are conveniently located at the back of the center console for easy access for rear passengers.



Side View Mirror Controls on Driver's Door

The controls for the outside rearview mirrors are conveniently located on the driver's door assist grip on all 2018 Eclipse Cross models.

For SE and SEL models, the mirror retractor switch is also in this location.

CONVENIENCE



Mitsubishi Connect

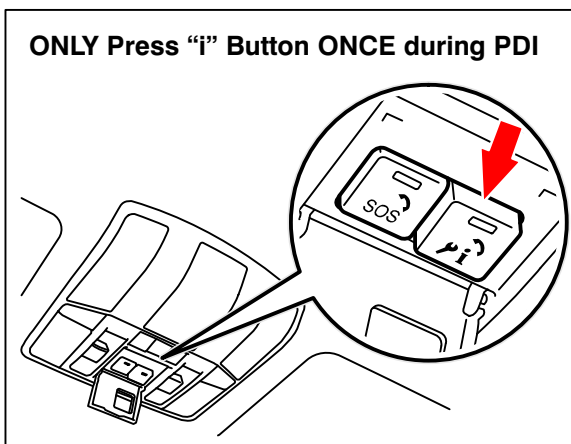
Standard on SE and SEL models is the innovative Mitsubishi Connect system. The system includes a 2-year trial subscription to Safeguard and Remote services. (Requires My Mitsubishi Connect app.)

Safeguard

Safeguard is a service that allows the customer to push a button to contact a call center for roadside assistance such as a flat tire, towing, etc.

The **Safeguard Package** includes:

- Automatic collision notification
- SOS emergency assistance
- Information assistance
- Alarm notification
- Roadside assistance
- Stolen vehicle assistance
- Mileage tracker
- Privacy mode



IMPORTANT PDI INSTRUCTIONS:

As part of dealer PDI, it is very important that the “i” (information) button **ONLY** be pressed **ONCE**. This performs a test of the Mitsubishi Connect system.

A message will be heard that starts with “Thank you for calling Mitsubishi Connect. Your vehicle has successfully completed a test call.”

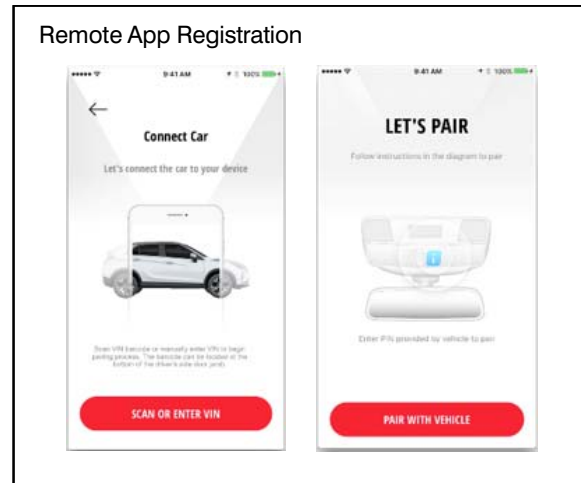
Only the CUSTOMER should push the “i” button a **SECOND** time. This prompts the customer to initiate a service agreement.

This message starts with “Thank you for calling Mitsubishi Connect. The vehicle you are calling from is not registered. If you are the owner of the vehicle and would like to register for services,…”

A **THIRD** press of the “i” button will connect to a live call center agent.

Also, DO NOT open the cover and **DO NOT PRESS** the **SOS** button. Pressing the SOS button will contact an emergency call center.

CONVENIENCE (continued)

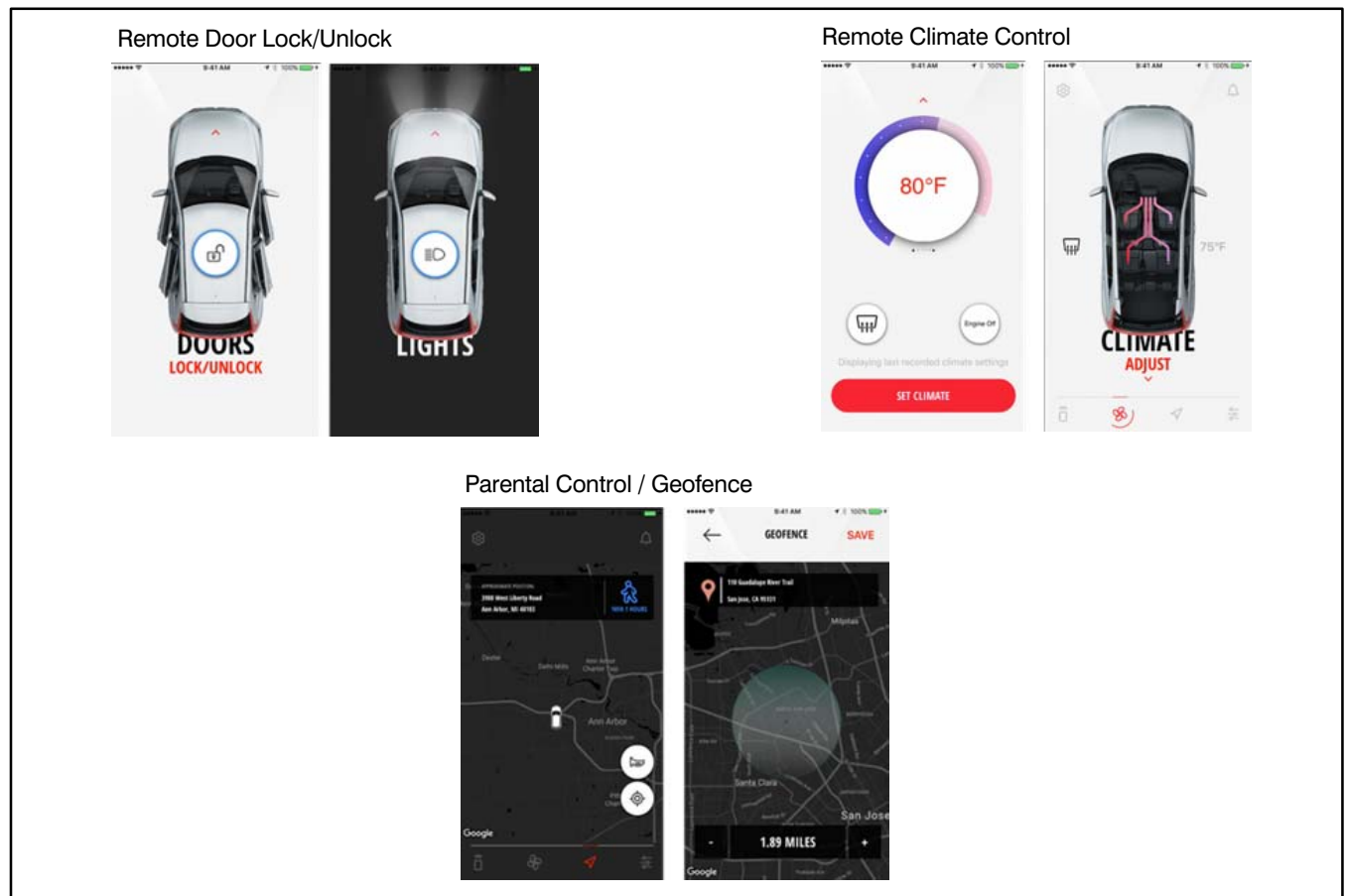


Remote

This feature provides remote control services to customers through smartphone or smart-speaker (Amazon Echo / Google Home).

Safeguard + Remote Package includes:

- All Safeguard Package features
- Remote climate control
- Remote door lock/unlock
- Remote horn
- Remote lights
- Car finder
- Vehicle settings
- Parental controls – Geofence, speed alert, curfew alert



CONVENIENCE (continued)



7" Smartphone Link Thin-Display Audio System w/Touchpad Controller

Standard on LE, SE, and SEL is the new 7-inch Smartphone Link Thin-Display Audio (SDA) system with a Touchpad controller.

Thin-Display

The new Thin-Display touchscreen is easy to see on top of the center instrument panel.

Touchpad Controller

The all new Touchpad controller, located on the center console to the right of the shifter, allows the user to tap and swipe through various systems while driving.

The Touchpad is operated much like a smartphone, swiping to scroll, then tapping the pad to select the desired system highlighted on the Thin Display.

Buttons below the pad are also available: Home, Back, Audio, and Apps.



For LE, SE, and SEL, pressing the Apps button displays the Apple CarPlay or Android Auto screen. Apple CarPlay functions can be operated with the Touchpad.

NOTE: Touchpad control is not available for Android Auto. An on-screen message will inform the user that Android Auto functions can only be controlled with voice command or the audio system touchscreen.

CONVENIENCE (continued)

At the far right of the system icons, a Tutorial is available to help familiarize the user with the various functions and basic touchpad operation.

Scroll through systems by swiping finger left / right across Touchpad



Tap Touchpad once to select system (Tutorial shown)



Swipe touchpad vertically to scroll up / down the list



Tap touchpad once at highlighted system for specific tutorial



CONVENIENCE (continued)



On SEL models, the Multi-View Camera screens appear on the Thin Display.



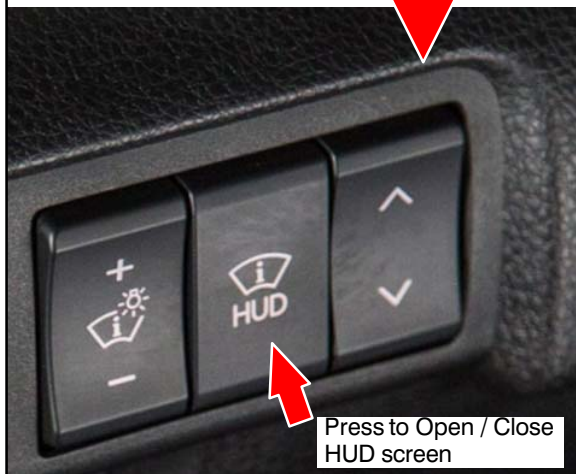
To see more views from all cameras (e.g., side, bird's-eye, etc), press the camera switch on the left of the steering wheel at any time.



NOTE: When shifting into Reverse on SEL models with the Multi-View Camera, the initial screen shown is the single wide-rear-view camera angle. Press the camera switch on the steering wheel to show all Multi-View camera angles.



CONVENIENCE (continued)



Head Up Display (HUD)

Standard on SEL models, the new Head Up Display, or HUD, displays driving information on a transparent screen directly in front of the driver.

The HUD screen displays the following information:

- Vehicle speed
- Auto-speed (cruise) control information
- Speed limiter information
- Adaptive Cruise Control (ACC) system information

The HUD screen will also display any warnings that appear on the information screen in the meter, such as:

- Door ajar
- Seat belt reminder
- Forward Collision Mitigation (FCM) system warning
- Lane Departure Warning (LDW)

The HUD screen is opened by pushing the "HUD" button to the left of the steering wheel.

The HUD screen will automatically close when the ignition is turned OFF, or can be closed by pressing the HUD button.

The angle of the screen is adjusted with the up-down button on the right, and brightness can be adjusted with the left button.

NOTE: Be sure to use a soft cloth when cleaning the HUD surface, such as an eyeglass cleaning cloth. Do not use cleaners containing silicone or wax, as these may damage the coating.

FACTORY AND PORT OPTION PACKAGES

SEL TOURING PACKAGE – 2018 Eclipse Cross – SEL

- Dual-pane power panoramic sunroof
- Adaptive Cruise Control (ACC) system
- Forward Collision Mitigation (FCM) System
- Lane Departure Warning (LDW) system
- Automatic High Beam (AHB) headlights
- Auto-dimming rear view mirror with Homelink®
- 710-Watt, 9 speaker Rockford-Fosgate® Premium Audio System including 10-inch dual-voice coil subwoofer w/Punch control®, DTS® Neural Surround, PremiDIA-WIDE® surround and Dolby® Volume
- Heated rear seats
- Heated steering wheel
- Black roof rails

EXTERIOR PACKAGE – 2018 Eclipse Cross – All Trim Levels

- Front and rear corner extensions and side extensions

TOWING PACKAGE – 2018 Eclipse Cross – All Trim Levels

- Tow hitch
- Trailer tow wire harness

CHROME PACKAGE – 2018 Eclipse Cross – All Trim Levels

- Chrome door handle covers
- Side view mirror covers
- Bright lower door molding

PROTECTION PACKAGE – 2018 Eclipse Cross – All Trim Levels

- Rear bumper step protector
- Tailgate garnish

LED ILLUMINATION PACKAGE – 2018 Eclipse Cross – All Trim Levels

- Floor illumination (Blue)
- Tailgate light
- Illuminated door sills

CARGO PACKAGE – 2018 Eclipse Cross – All Trim Levels

- Cargo mat
- Cargo net

PREMIUM EXTERIOR PACKAGE – 2018 Eclipse Cross – LE, SE, SEL

- Front garnish
- Black lug nuts and wheel locks
- Rear garnish
- Front and rear corner extensions and side extensions

GARNISH PACKAGE – 2018 Eclipse Cross – All Trim Levels

- Front garnish
- Rear garnish

FACTORY AND PORT OPTION PACKAGES (continued)

LED INTERIOR ENHANCEMENT PACKAGE – 2018 Eclipse Cross – All Trim Levels

- LED room, map, and cargo lights
- Door switch panels – Gloss Black

ALL WEATHER PACKAGE – 2018 Eclipse Cross – All Trim Levels

- Cargo tray
- All-weather floor mats (4)

QUICK VALUE PACKAGE Q1 – 2018 Eclipse Cross – LE, SE, SEL

- Black lug nuts and wheel locks
- Rear bumper step protector
- Tailgate garnish
- Cargo mat
- Cargo net

QUICK VALUE PACKAGE Q3 – 2018 Eclipse Cross – ES

- Wheel locks
- Rear bumper step protector
- Tailgate garnish
- Cargo mat
- Cargo net

ACCESSORY OPTIONS (U.S. Models)

The following port and/or dealer installed accessories are available for 2018 Eclipse Cross.

- Rear park assist sensors
- Hood protector
- Tonneau cover (ES only)
- Wheel locks (ES only)
- Front and rear mudguards
- Roof rack crossbars (SEL only)
- Black lug nuts and wheel locks (LE, SE, SEL)

AVAILABLE INDIVIDUAL ADDITIONAL EQUIPMENT (U.S. Models)

- Tonneau cover (LE, SE, SEL)
- Carpeted floor mats and portfolio

| WARRANTY | |
|--|--|
| U.S. and Puerto Rico | Canada |
| <ul style="list-style-type: none"> ● Basic – 5 years or 60,000 miles | <ul style="list-style-type: none"> ● Basic – 5 years or 100,000 km |
| <ul style="list-style-type: none"> ● Powertrain – 10 years or 100,000 miles (original retail purchaser only). 5 years or 60,000 miles to subsequent owners. | <ul style="list-style-type: none"> ● Powertrain – 10 years or 160,000 km |
| <ul style="list-style-type: none"> ● Outer Panel Rust Perforation – 7 years or 100,000 miles | <ul style="list-style-type: none"> ● Rust Perforation – 5 years with unlimited km |
| <ul style="list-style-type: none"> ● Adjustments – 1 year or 12,000 miles | <ul style="list-style-type: none"> ● Adjustments – 1 year or 20,000 km |
| <ul style="list-style-type: none"> ● Roadside Assistance – 5 years / unlimited miles | <ul style="list-style-type: none"> ● Roadside Assistance – 5 years/unlimited km |
| <ul style="list-style-type: none"> ● Emissions – Refer to the Warranty and Maintenance Manual for coverage details. | |