



GROUP <b>TRA</b>	MODEL <b>All Applicable Models</b>
NUMBER <b>047 (Rev 2, 2/16/2018)</b>	DATE <b>January 2013</b>

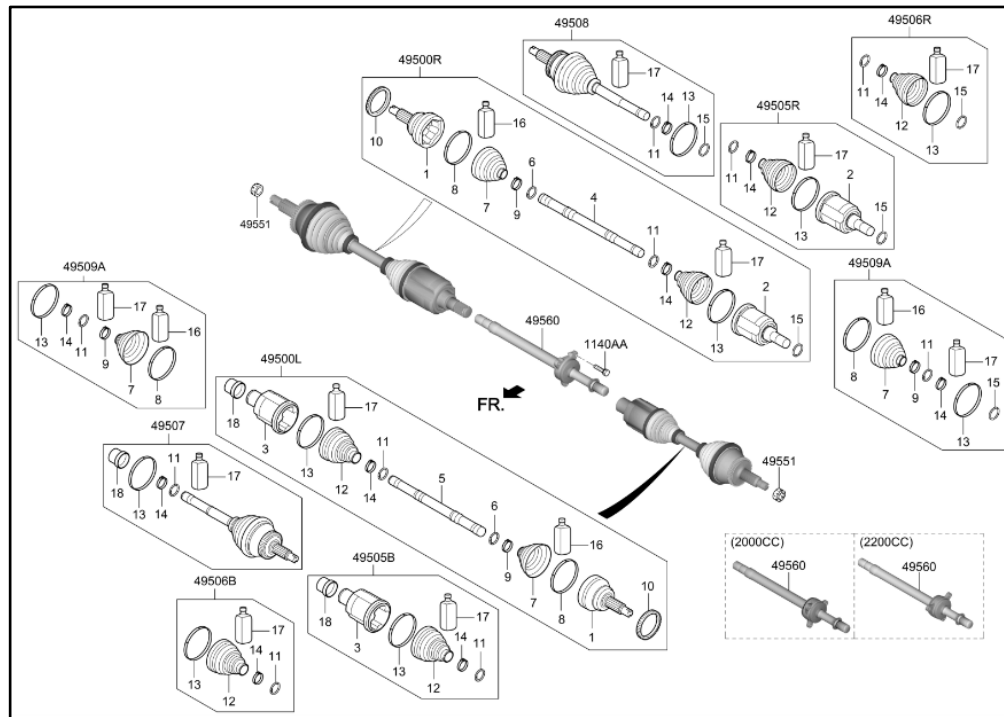
## TECHNICAL SERVICE BULLETIN

SUBJECT: DRIVESHAFT SERVICEABILITY

### ★ NOTICE

This bulletin has been revised to include additional information. New/revised sections of this bulletin are indicated by a black bar in the margin area.

This bulletin provides information regarding driveshaft serviceability on applicable Kia vehicles. Individual service parts such as boots, joints, and hardware are available through your parts department for all models with serviceable driveshafts.



Boot & Joint Kits (Stinger (CK) shown)

### ★ IMPORTANT NOTICE

Replacement of the driveshaft assembly may be considered an over-repair if affected parts are available separately. Such claims may be subject to chargeback.

File Under: <Transmission>

Circulate To:  General Manager  Service Manager  Parts Manager  
 Service Advisors  Technicians  Body Shop Manager  Fleet Repair

**General Service Procedure:****\* NOTICE**

Information regarding the individual component replacement is available in the driveshaft repair procedure located in the shop manual on KGIS. Refer to KGIS for specific repair procedures. Labor times and operation codes are available in the Labor Time Standards Guide.

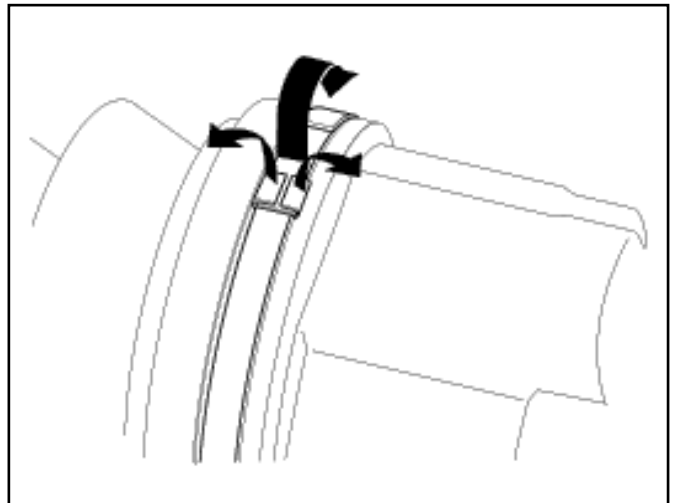
**\* NOTICE**

- Use a pry bar being careful not to damage the transaxle and joint.
- Do not insert the pry bar too deep as this may cause damage to the oil seal.
- Do not pull the driveshaft using excessive force. This may cause components inside the joint kit to dislodge resulting in a torn boot or a damaged bearing.
- Plug the hole of the transaxle case with the oil seal cap to prevent contamination.
- Support the driveshaft properly.
- Replace the retainer ring whenever the driveshaft is removed from the transaxle case.

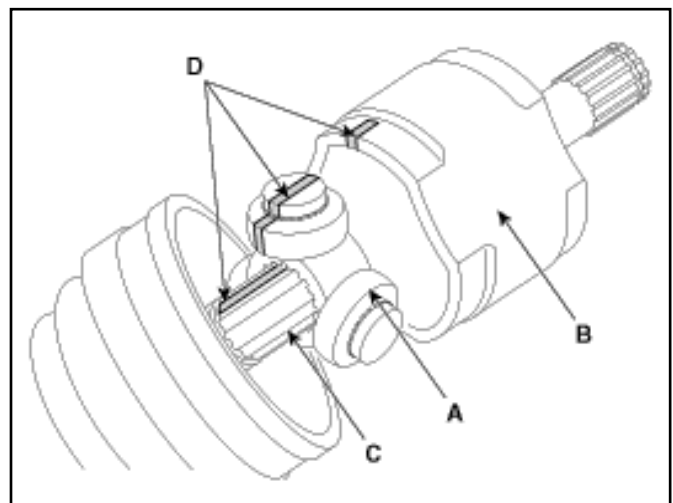
1. Remove the driveshaft from the vehicle by referring to the appropriate section of the shop manual on KGIS.
2. Remove both clamps from the inner tripod joint boot (transaxle side) using a flat-bladed screwdriver, as shown.

**\* NOTICE**

**Clamps are one-time use and must be replaced after removal.**



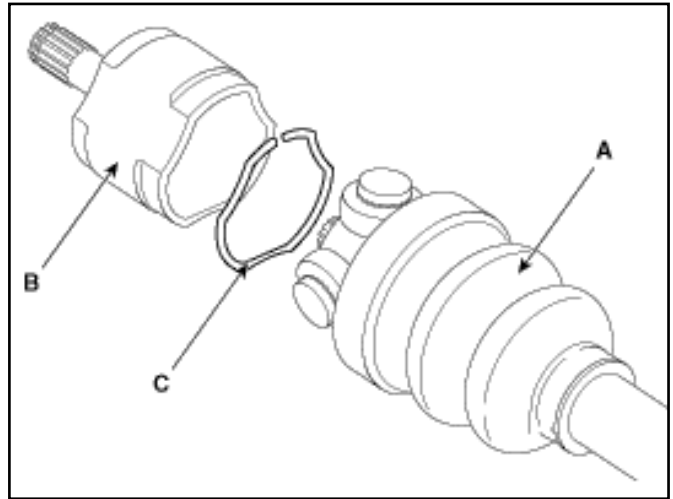
3. Carefully slide the boot along the driveshaft and away from the tripod joint. Clean excess grease from the assembly using a shop towel.
4. To maintain drive shaft balance integrity, mark the trunnion (A), tripod joint case (B), and the splines (C) of the driveshaft, as shown.



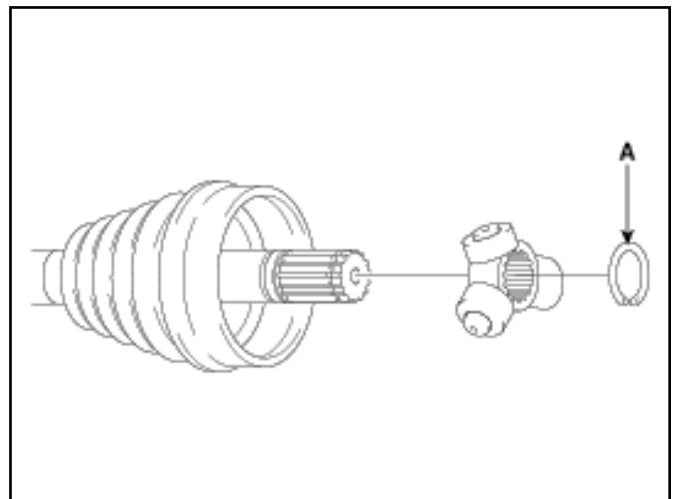
SUBJECT:

## DRIVESHAFT SERVICEABILITY

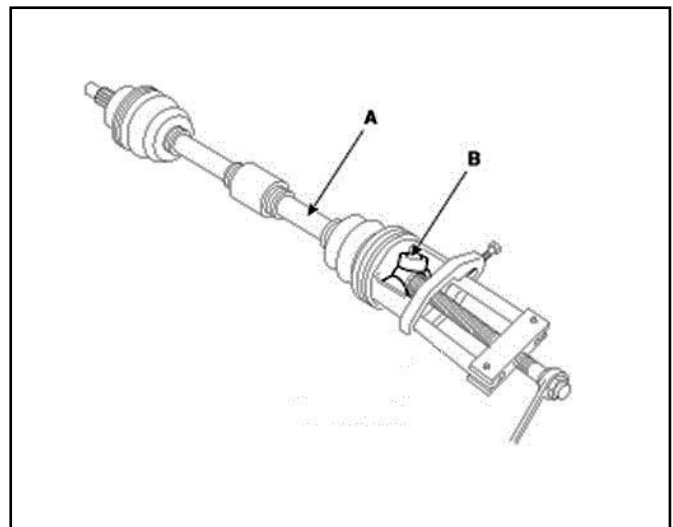
5. Carefully remove retaining clip (C) (if equipped) from tripod joint case (B) using snap-ring pliers or a flat-bladed screwdriver.



6. Separate the tripod joint case from the assembly.
7. Using snap-ring pliers, carefully remove the snap ring (A) from the driveshaft, as shown.



8. Carefully remove the trunnion assy. (B) from the driveshaft (A) using a suitable puller. Use a shop towel to remove any excess grease.



9. Replace all affected parts and reassemble the driveshaft by reversing the order of removal.