

Clutch Pedal Squeak/Creak Noise

Service Category Drivetrain

Section Clutch

Market USA

Toyota Supports
ASE Certification 

Applicability

YEAR(S)	MODEL(S)	ADDITIONAL INFORMATION
2005 - 2017	Tacoma	

REVISION NOTICE

February 21, 2018 Rev2:

- Applicability has been updated to include 2015 – 2017 model year Tacoma vehicles.
- The Parts Information and Repair Procedure sections have been updated.

September 10, 2014 Rev1:

- Applicability has been updated to include 2013 – 2014 model year Tacoma vehicles.
- The Warranty Information, Parts Information, and the Repair Procedure sections have been updated.

Any previous printed versions of this bulletin should be discarded.

SUPERSESION NOTICE

The information contained in this bulletin supersedes SB No. TC004-06.

- Applicability has been updated to include 2007 – 2012 model year Tacoma vehicles.
- The Repair Procedure section has been updated.

Service Bulletin No. TC004-06 is obsolete and any printed versions should be discarded.

Be sure to review the entire content of this bulletin before proceeding.

Introduction

Some 2005 – 2017 model year Tacoma vehicles may exhibit a squeak or creak noise from the clutch pedal when it is depressed or released. Follow the Repair Procedure in this bulletin to address this condition.

Clutch Pedal Squeak/Creak Noise

Warranty Information

OP CODE	DESCRIPTION	TIME	OFF	T1	T2
TC1400	R & R Clutch Pedal Sub-assembly, Clutch Master Cylinder Assembly, and Clutch Reservoir Hose	1.2	31311-04010 31311-04011 31311-04012	91	14

APPLICABLE WARRANTY

- This repair is covered under the Toyota Comprehensive Warranty. This warranty is in effect for 36 months or 36,000 miles, whichever occurs first, from the vehicle's in-service date.
- Warranty application is limited to occurrence of the specified condition described in this bulletin.

Parts Information

PART NUMBER		PART NAME	QTY
PREVIOUS	NEW		
31420-04010 31420-04011 31420-04020 31420-60031	31420-60032	Clutch Master Cylinder Assembly	1
31311-04010 31311-04011 31311-04012	31311-04020	Clutch Pedal Sub-assembly	1
31434-04010	31434-60010	Clutch Reservoir Hose	1

Clutch Pedal Squeak/Creak Noise

Required Tools & Equipment

SPECIAL SERVICE TOOLS (SST)	PART NUMBER	QTY
Union Nut Wrench 10 mm	09023-00101	1

NOTE

Additional SSTs may be ordered by calling 1-800-933-8335.

REQUIRED TOOLS & MATERIAL	PART NUMBER	QTY
Body Grease W	08887-02007	1
MP (Multi-Purpose) Grease	—	As Needed
Brake Fluid: SAE J1703 or FMVSS No. 116 DOT 3	—	As Needed

Repair Procedure

1. Confirm the condition.

Is there a squeak or creak noise from the clutch pedal assembly when it is depressed or released?

- **YES** — Continue to step 2.
- **NO** — This bulletin does NOT apply. Continue diagnosis using the applicable Repair Manual.

NOTE

Make sure the noise is coming from the clutch pedal assembly and NOT from other components related to the clutch system.

Clutch Pedal Squeak/Creak Noise

Repair Procedure (continued)

- Replace the clutch pedal, clutch master cylinder assembly, and the clutch master cylinder hose.

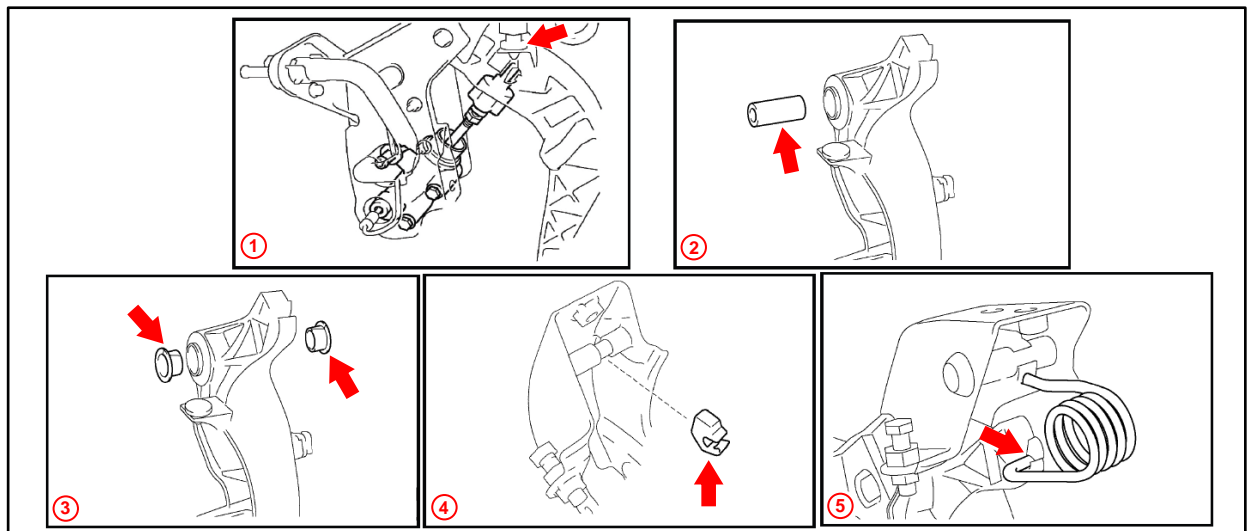
NOTE

- Apply body grease W where the clutch master cylinder clevis and clutch pedal meet (see callout 1).
- Apply MP grease to the shaft collar and turnover spring contact surfaces as shown in the Repair Manual (see callouts 2 – 5).

Refer to TIS, applicable model and model year Repair Manual:

- 2005 Tacoma:
Drivetrain – Clutch – [“Clutch Pedal Sub-Assy: Replacement”](#)
- [2006](#) / [2007](#) / [2008](#) / [2009](#) / [2010](#) / [2011](#) / [2012](#) / [2013](#) / [2014](#) / [2015](#) / [2016](#) / [2017](#) Tacoma:
Drivetrain – Clutch – [“Clutch: Clutch Pedal: Removal”](#)
- [2006](#) / [2007](#) / [2008](#) / [2009](#) / [2010](#) / [2011](#) / [2012](#) / [2013](#) / [2014](#) / [2015](#) / [2016](#) / [2017](#) Tacoma:
Drivetrain – Clutch – [“Clutch: Clutch Pedal: Installation”](#)

Figure 1.



1	Apply Body Grease W Where the Clutch Master Cylinder and the Clutch Pedal Meet
2	Apply MP Grease to the Clutch Pedal Shaft Collar
3	Apply MP Grease to the Two Bushings

4	Apply MP Grease to the Clutch Pedal Spring Holder and the Clutch Pedal Support
5	Apply MP Grease to the Clutch Pedal Sub-assembly and the Compression Spring