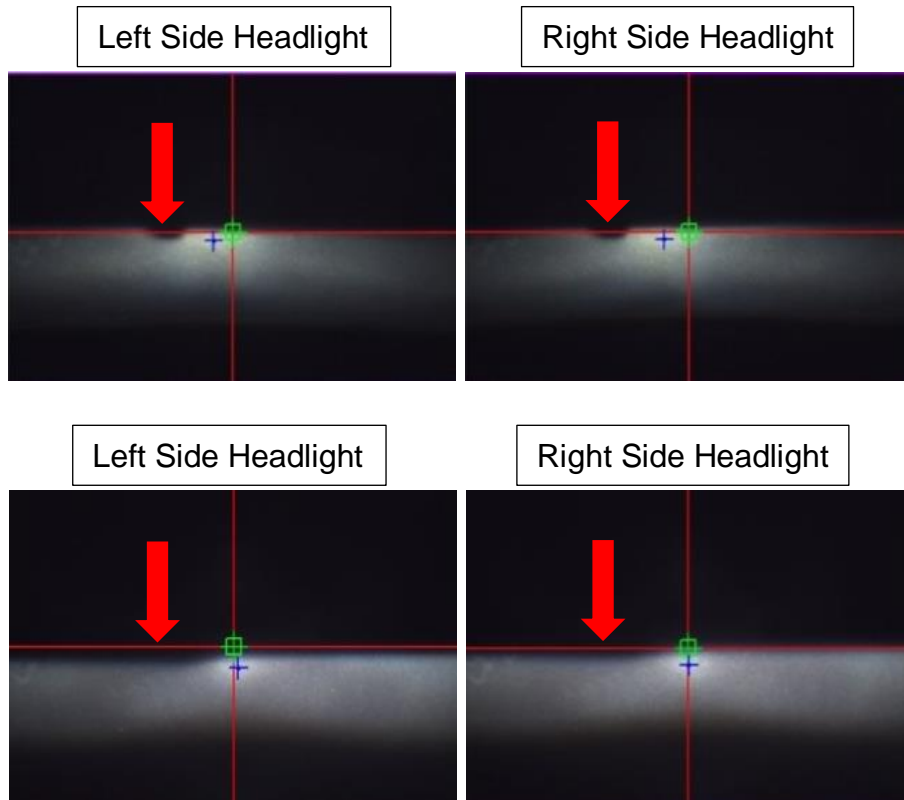
 HYUNDAI Technical Service Bulletin	GROUP BODY ELECTRICAL	NUMBER 18-BE-003
	DATE FEBRUARY, 2018	MODEL(S) SONATA (LFa) ELANTRA (ADa)(AD) ELANTRA GT (PD) SANTA FE SPORT (AN) SANTA FE (NC)
SUBJECT: ANTI GLARE HEADLIGHT PATTERN		

Description: This TSB provides information on the headlight pattern changes on certain 2018 MY Sonata (LFa), Elantra (ADa)(AD), Elantra GT (PD), Santa Fe Sport (AN), and Santa Fe (NC).

Applicable Vehicles:
2018 Sonata Equipped with LED Headlights
2018 Elantra Sedan Equipped with HID Headlights
2018 Elantra GT Equipped with HID Headlights
2018 Santa Fe Sport and Santa Fe Equipped with HID Headlights



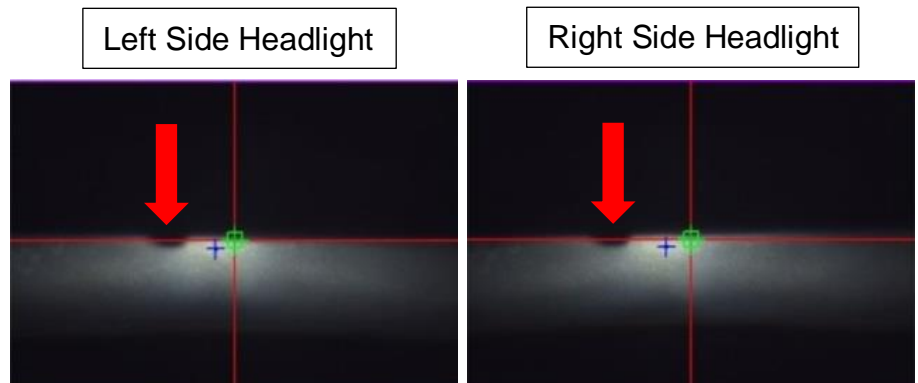
Warranty Information:
Normal Warranty Applies

NORMAL HEADLIGHT PATTERN

1. 2018 Sonata (LFa) with **LED** headlights.

The black half-moon image is designed to prevent the glare to the vehicle traveling in the opposite direction.

Do not replace the headlamp assembly for concerns related to the half-moon shadow.



2. 2018 Elantra (ADa)(AD), Elantra GT, Santa Fe Sport (AN), and Santa Fe (NC) with **HID** headlights

The slight drop on the left side of each headlight is designed to prevent glare to the vehicle traveling in the opposite direction.

Do not replace the headlamp assembly, and do not attempt to adjust the headlights.

