



# Service Action

Karma Automotive LLC

**NUMBER: 3.90.16.0043.05**

**DATE: May 2016**

**MODEL: MY12 and MY13 Fisker KARMA**

**Revised: January 2018**

**TITLE: Baseline 535 Release Overview**

**PRIORITY:** Vehicle in operation

**APPLICABILITY:** All variants

**MARKET REGIONS:** All

**PURPOSE:** Flash reprogramming allows the ECU software to be updated without replacement of the ECU hardware. Flash calibration updates for the specific vehicle models / ECUs are released as field-fix procedures described in the respective individual service bulletins.

This document will be used as a reference guide for technicians to update a vehicle to Baseline 535. The required software files will be listed by ID numbers as well as the required flash files necessary to update the ECU. A Baseline 530 is required before installing the Baseline 535. Using this guide, the technician can determine what ECUs have updates and those that require it.

### CLAIM NOTICE

The information contained in this document supersedes the following bulletins and campaigns: 290120033, 390120018, 290120011, 290120008, 390120003, 390110020, 390110015, 39011016, 390120040, 390120058 and 390150041. These previous campaigns and/ or bulletins are officially expired as of the publication date of this announcement. **Print this document and scan for the vehicle records, email to Karma Automotive Technical Service Support and attach to the claim.**

Please read bulletins **3.90.15.0041.04** Baseline 520 and **1.00.15.0024.04** Tech Tip Flash USB Drive Prep to ensure you have a completed baseline 520 and 530. NOTE: **do not perform BECM flash for BL530**, this module will be flashed as described in this announcement.

Notify Karma Automotive Technical Assistance **prior to update** if the vehicle has any concerns with a nonoperational USB port or CIU.

If your PRODIS Fisker Workshop Tester Scan tool is still functioning ignore the following.

There is a new Karma Workshop Tool.

Verify you have the new Karma Sync installed on your service tool.

Please contact Technical Support Service for assistance to install the new software.

Your log in ID and initial password will be provided to you by the Karma Technical Service Support.

After the Karma Sync installation is completed and verified; proceed with installing the Baseline software.

Karma Automotive Bulletins and service documents are intended for use by experienced and trained Technicians. If you lack the skills, tools, equipment and a suitable workshop for any procedure described in this document, we suggest you leave such repairs to a Karma retailer and service provider. See your service provider for advice on whether your vehicle may benefit from the information contained within this document. The information contained in the Karma Bulletin is accurate at the date of publication. However, Karma Automotive regularly updates technical information. Please check with your Karma Automotive Retailer and Karma Automotive service provider that the bulletin you intend to use contains the latest available information.

**NUMBER: 3.90.16.0043.05**

**DATE: May 2016**

**MODEL: MY12 and MY13 Fisker KARMA**

**Revised: January 2018**

**TITLE: Baseline 535 Release Overview**

**PROCESS OVERVIEW:**

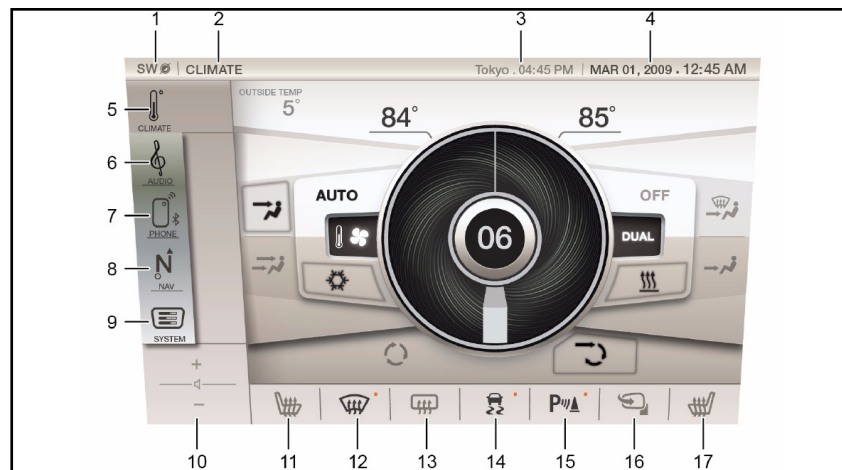
1. Baseline 535 Software Version ID Chart
2. Preparing Vehicle for the ECU Flash Reprogramming
3. Pre/post Flash Processes
4. File Quick Reference Guide

**1. Baseline 535 Control Modules Software version ID Chart**

The Control Modules software version identification chart indicates the individual software IDs a vehicle will have after updating to Baseline 530. The control modules that contain software level updates in this Baseline release will be indicated by BOLD font and will have “(Updated)” next to the module name.

**NOTE:** All ECU software version IDs on the vehicle should match the table below to be considered at the BL535 software level (Green boxes are the newest BL535 changes). This should be confirmed; enter Vehicle Diagnostics and the **PART IDENTIFICATION** or application check the following:

The Central Infotainment Unit Software, VIP, NAV, and HOST versions must be checked using the System Information screen on the TPI. This can be accessed by pressing and holding the “SYSTEM” button for 8 seconds.



**System button Item #9.**

Karma Automotive Bulletins and service documents are intended for use by experienced and trained Technicians. If you lack the skills, tools, equipment and a suitable workshop for any procedure described in this document, we suggest you leave such repairs to a Karma retailer and service provider. See your service provider for advice on whether your vehicle may benefit from the information contained within this document. The information contained in the Karma Bulletin is accurate at the date of publication. However, Karma Automotive regularly updates technical information. Please check with your Karma Automotive Retailer and Karma Automotive service provider that the bulletin you intend to use contains the latest available information.



# Service Action

Karma Automotive LLC

**NUMBER: 3.90.16.0043.05**

**DATE: May 2016**

**MODEL: MY12 and MY13 Fisker KARMA**

**Revised: January 2018**

**TITLE: Baseline 535 Release Overview**

Review previous Baseline update releases to ensure the correct software files are installed, if they are not please contact Technical Service Support before you begin this Baseline 535 install.

Control Module (ECU) Name	Software Version ID <i>after</i> <b>535</b> update	Software ID as received <i>before</i> 535 Update (enter ID displayed on scan tool below)
Vehicle Gateway Module (VGM)	0350_05_01	
Vehicle Control Module (VCM)	0002_06_04	
CIU	Software: 05.03.99.00 VIP 07.77.00 NAV (NA): 01.05.01 NAV (EU): 01.05.02 HOST: 09.29.00	
TPI	0031_01_12	
DIS	0041_01_58	
EPB	0061_00_02	
EBCM T1	0076_03_04	
EBCM T3	0071_07_04	
ECM	0121_07_01	
<b>BECM (Updated in BL535)</b>	<b>0156_02_10</b>	
PIM_TM1	0281_06_23	
PIM_TM2	0291_06_23	
PIM_GEN	0301_06_23	
APM	0311_01_02	
HCU	0111_04_15	
ASM	0085_01_00	

Karma Automotive Bulletins and service documents are intended for use by experienced and trained Technicians. If you lack the skills, tools, equipment and a suitable workshop for any procedure described in this document, we suggest you leave such repairs to a Karma retailer and service provider. See your service provider for advice on whether your vehicle may benefit from the information contained within this document. The information contained in the Karma Bulletin is accurate at the date of publication. However, Karma Automotive regularly updates technical information. Please check with your Karma Automotive Retailer and Karma Automotive service provider that the bulletin you intend to use contains the latest available information.

NUMBER: 3.90.16.0043.05

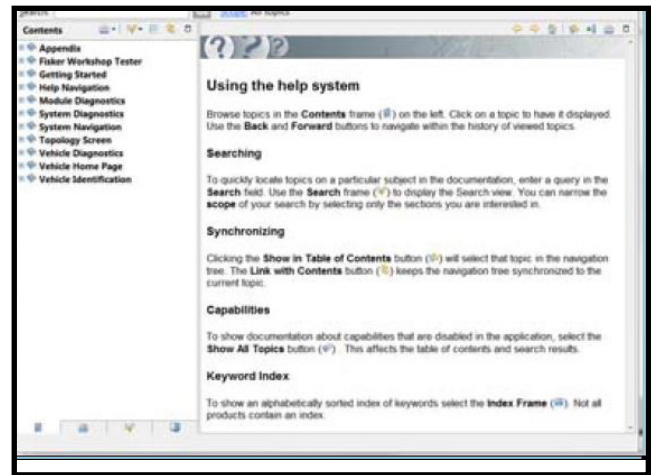
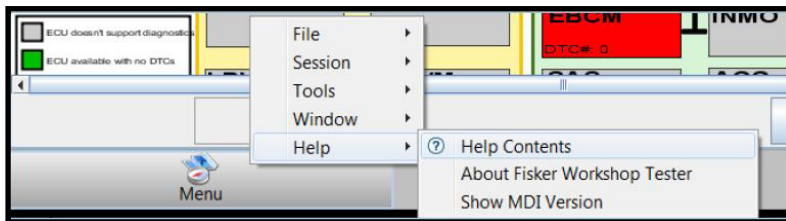
DATE: May 2016

MODEL: MY12 and MY13 Fisker KARMA

Revised: January 2018

TITLE: Baseline 535 Release Overview

**Note:** For additional help on procedures, reference the Help File in the scantool software.  
 > Menu > Help > Help Contents



\* Indicates ECU has a Post Flash requirement.

\*\* Indicates ECU has both a Pre and Post Flash requirement.

Baseline 535 has no Pre or Post flash Requirements, however prior Baseline software uploads may have these operations to consider.

## 2. Preparing Vehicle for ECU Flash Reprogramming

Verify the vehicle's 12 volt battery is at or above 12.2 Volts before proceeding.

- If the Voltage is below specification, connect a battery charger using the **B+ positive** post at the Power Distribution Center (PDC) with special tool *FST9001 - Battery Charging Terminal Adapter*. Connect the **-Negative** lead to the Accessory power Module (APM) ground terminal.

### **⚠ WARNING!**

**DO NOT ALLOW LAPTOP TO GO INTO SLEEP OR SCREEN SAVER MODE DURING THIS PROCESS. TURN OFF SCREEN SAVER IF NECESSARY AND ENSURE THE LAPTOP STAYS AWAKE. THE LAPTOP MUST BE PLUGGED INTO A STABLE POWER SOURCE DURING THE PROCESS. IF THE VEHICLE GOES INTO SLEEP MODE WHILE AN ECU IS BEING PROGRAMMED; THE REPROGRAMMING MAY BE UNSUCCESSFUL AND MAY CAUSE DAMAGE TO THE ECU.**

Karma Automotive Bulletins and service documents are intended for use by experienced and trained Technicians. If you lack the skills, tools, equipment and a suitable workshop for any procedure described in this document, we suggest you leave such repairs to a Karma retailer and service provider. See your service provider for advice on whether your vehicle may benefit from the information contained within this document. The information contained in the Karma Bulletin is accurate at the date of publication. However, Karma Automotive regularly updates technical information. Please check with your Karma Automotive Retailer and Karma Automotive service provider that the bulletin you intend to use contains the latest available information.

**NUMBER: 3.90.16.0043.05**

**DATE: May 2016**

**MODEL: MY12 and MY13 Fisker KARMA**

**Revised: January 2018**

**TITLE: Baseline 535 Release Overview**

**Note:** Battery voltage must be maintained between 12.2 and 16 volts while flashing an ECU.

Press the Start/Stop Button (SSB) once to turn the vehicle on to Accessory. The SSB back lighting will turn amber and the DIS will display “**ACC**”.

When an ECU is being reprogrammed; the vehicle must be prevented from going into sleep mode. This can be accomplished by turning on the **Hazard Warning Lights**.

- Once the flash has started, do not disturb the vehicle by opening/closing doors, turning on unnecessary accessories or lights.

3.4 - If using a 3-channel WDI, install the yellow adapter if needed and reconnect to the vehicle.

Flash the module:  
 •**Battery Energy Control Module**

ECU	Battery Energy Control Module
<b>SBL</b>	BECM_SBL_0154_00_03.zip
<b>APP</b>	BECM_APP_0156_02_10.zip
<b>CAL</b>	BECM_CAL_014F_ROUTINE.dsc.hex

3.5 - Once all of the ECUs have been updated, click the Exit button to return to the System Navigation menu.

3.6 - Once updated to BL535, turn the vehicle off and wait 1 minute to allow the vehicle to go to sleep.

3.7 - Power the vehicle up to READY mode and clear any Diagnostic Trouble Codes (DTCs) that may be present.

3.8 - Test drive the vehicle to confirm proper operation and that no DTCs return.



# Service Action

Karma Automotive LLC

**NUMBER: 3.90.16.0043.05**

**DATE: May 2016**

**MODEL: MY12 and MY13 Fisker KARMA**

**Revised: January 2018**

**TITLE: Baseline 535 Release Overview**

## PARTS REQUIRED:

PART NUMBER	DESCRIPTION
N/A	

## SHOP SUPPLIES:

DESCRIPTION
N/A

## SPECIAL TOOLS:

DESCRIPTION
Baseline 535 Install

## LABOR CODES:

CODE	DESCRIPTION	TIME	DEFECT CODE
00-99-25-22	Baseline 535/ Repair	1.5	00-99-25-98

## SUBLET:

CODE	DESCRIPTION	AMOUNT
N/A		

## CAUSAL PART:

PART NUMBER	DESCRIPTION
C131118101900	BECM - Battery Energy Control Module

**WARRANTY DISPOSITION: N/A**

**Print this bulletin and scan for the vehicle records, email to Karma Automotive Technical Service Support and attach to the claim submitted.**

Karma Automotive Bulletins and service documents are intended for use by experienced and trained Technicians. If you lack the skills, tools, equipment and a suitable workshop for any procedure described in this document, we suggest you leave such repairs to a Karma retailer and service provider. See your service provider for advice on whether your vehicle may benefit from the information contained within this document. The information contained in the Karma Bulletin is accurate at the date of publication. However, Karma Automotive regularly updates technical information. Please check with your Karma Automotive Retailer and Karma Automotive service provider that the bulletin you intend to use contains the latest available information.