



MODEL: Karma Revero

DATE: January 2018

TITLE: Seat Squeak Remedy

First Release

PRIORITY: On Complaint

APPLICABILITY: MY18 Karma Revero Models

MARKET REGION: North America

PURPOSE: To reduce noise concern related to seat use

Adjustable seats may make a squeak or creak noise during normal vehicle operation. A creak or rattle sounds may be heard when occupant is moving in seat or adjusting seat throughout its normal operating range.

Begin by verifying the noise is present by operating vehicle in a controlled environment.

On a normal test drive route note the location of sound from the seat.

Adjust the seats through the entire range of motion, fore-aft, and up-down, move the lumbar support as well.

If the noise is confirmed, proceed with this bulletin.

Special lubricant, Klüberalfa MR- 3-500, and felt tape will need to be applied

<p>NOTE: Keep Lubricant in sealed bottle to avoid evaporation Apply lubricant directly to concerned area Wear nitrile gloves & eye protection while handling lubricant Keep lubricant away from painted surfaces (i.e. side shield)</p>

<p>Special lubricant, Klüberalfa MR- 3-500, can be sourced from: https://www.klueber.com/us/en/shop/</p>
--

<p>The US office contact information is:</p>
--

<p>Klüber Lubrication NA LP</p>

<p>32 Industrial Drivew</p>

<p>Londonderry, NH 03053</p>

<p>Tel: 1-603-647-4104</p>

Karma Automotive Bulletins and service documents are intended for use by experienced and trained Technicians. If you lack the skills, tools, equipment and a suitable workshop for any procedure described in this document, we suggest you leave such repairs to a Karma retailer and service provider. See your service provider for advice on whether your vehicle may benefit from the information contained within this document. The information contained in the Karma Bulletin is accurate at the date of publication. However, Karma Automotive regularly updates technical information. Please check with your Karma Automotive Retailer and Karma Automotive service provider that the bulletin you intend to use contains the latest available information.

MODEL: Karma Revero

DATE: January 2018

First Release

TITLE: Seat Squeak Remedy

For reference the following images are provided.
 Outboard side shield and back panel (fig. 1)

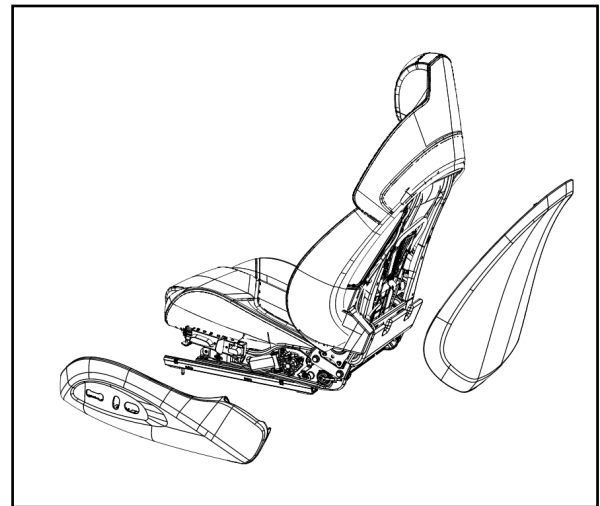


fig.1

Begin preparation of the front seat:
 Move the driver side front seat to provide exposure to all the highlighted areas. (Fig 2a and 2b)

Kluberafa application areas shown below

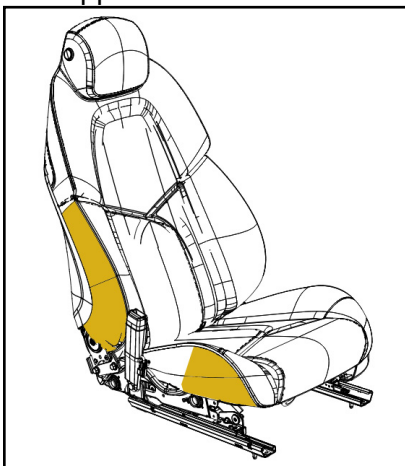


fig.2a

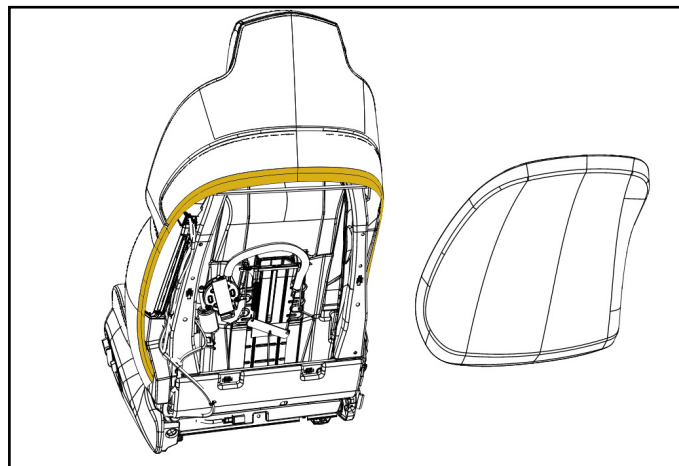


fig.2b

Karma Automotive Bulletins and service documents are intended for use by experienced and trained Technicians. If you lack the skills, tools, equipment and a suitable workshop for any procedure described in this document, we suggest you leave such repairs to a Karma retailer and service provider. See your service provider for advice on whether your vehicle may benefit from the information contained within this document. The information contained in the Karma Bulletin is accurate at the date of publication. However, Karma Automotive regularly updates technical information. Please check with your Karma Automotive Retailer and Karma Automotive service provider that the bulletin you intend to use contains the latest available information.

MODEL: Karma Revero

DATE: January 2018

First Release

TITLE: Seat Squeak Remedy

Begin preparation of the front seat:

Move the driver side front seat to provide exposure to all the highlighted areas (fully reclined).

if necessary perform these steps to the passenger front seat as well

Cover unintended trim with a lint free cloth or other protective cover.

Spray the required lubricant directly onto leather in the indicated areas, applying to one area of the seat at a time:



fig.3



fig.4

Karma Automotive Bulletins and service documents are intended for use by experienced and trained Technicians. If you lack the skills, tools, equipment and a suitable workshop for any procedure described in this document, we suggest you leave such repairs to a Karma retailer and service provider. See your service provider for advice on whether your vehicle may benefit from the information contained within this document. The information contained in the Karma Bulletin is accurate at the date of publication. However, Karma Automotive regularly updates technical information. Please check with your Karma Automotive Retailer and Karma Automotive service provider that the bulletin you intend to use contains the latest available information.

MODEL: Karma Revero

DATE: January 2018

First Release

TITLE: Seat Squeak Remedy

Both top (fig.3) and bottom of bite line (fig.4), specifically applying to inboard and outboard corners, 35mm from the suede seam, and all the suede surfaces.

Apply lubricant to each component the seat back and the cushion as illustrated, as well as the suede surfaces found here.

Apply lubricant to inboard back panel, including suede and seam (fig.5)

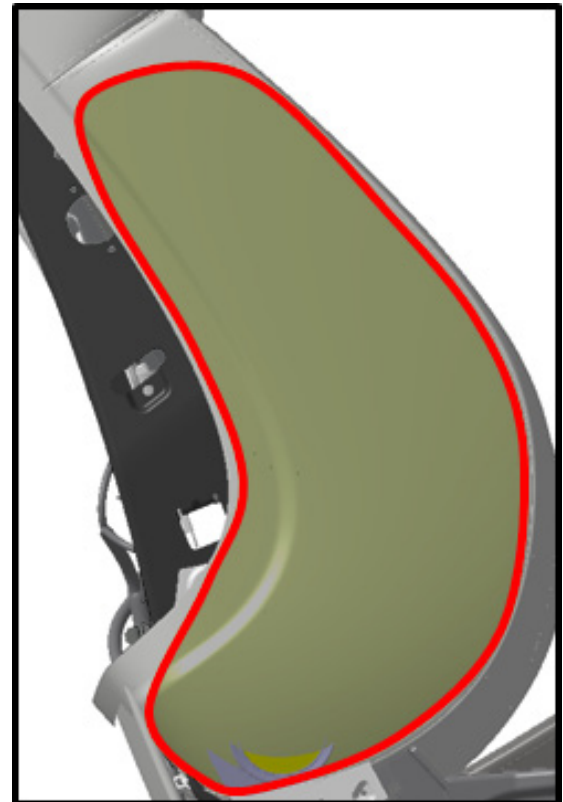


fig.5

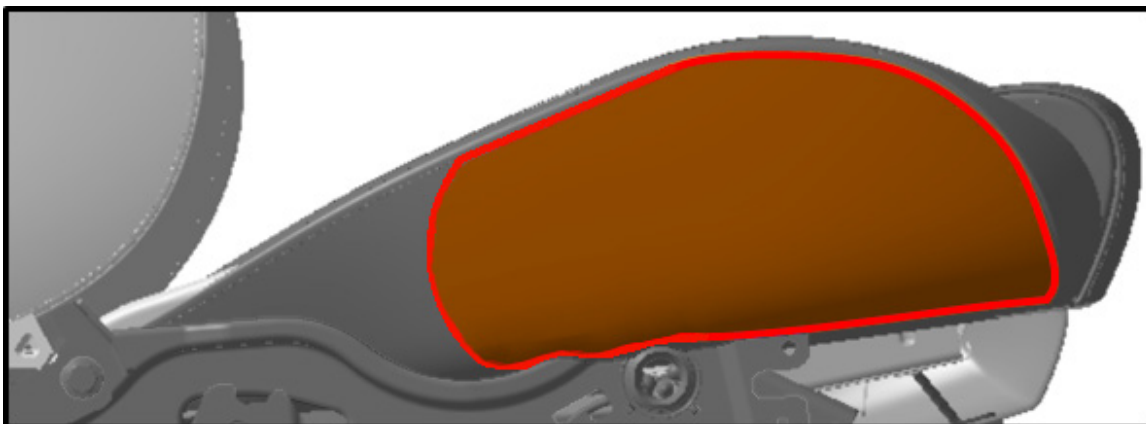


fig.6

Karma Automotive Bulletins and service documents are intended for use by experienced and trained Technicians. If you lack the skills, tools, equipment and a suitable workshop for any procedure described in this document, we suggest you leave such repairs to a Karma retailer and service provider. See your service provider for advice on whether your vehicle may benefit from the information contained within this document. The information contained in the Karma Bulletin is accurate at the date of publication. However, Karma Automotive regularly updates technical information. Please check with your Karma Automotive Retailer and Karma Automotive service provider that the bulletin you intend to use contains the latest available information.

MODEL: Karma Revero**DATE: January 2018****First Release****TITLE: Seat Squeak Remedy**

As shown apply the inboard side of driver seat where it contacts the tunnel (fig. 6)

Apply 2-3 inches away, 3 times in a sweeping motion

Apply the specified lubricant to entire edge of back panel, a 25mm band following the edge as shown (fig.7a), and the mating surface of the leather on the seat back. (fig 7b)



fig.7a

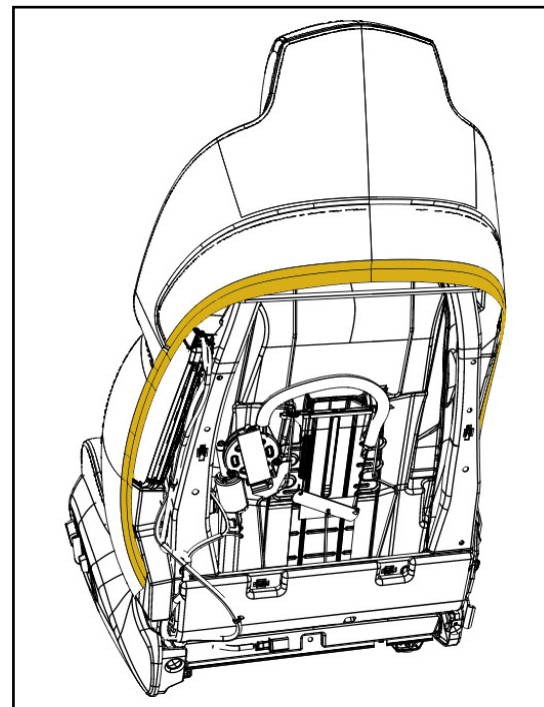


fig.7b

Karma Automotive Bulletins and service documents are intended for use by experienced and trained Technicians. If you lack the skills, tools, equipment and a suitable workshop for any procedure described in this document, we suggest you leave such repairs to a Karma retailer and service provider. See your service provider for advice on whether your vehicle may benefit from the information contained within this document. The information contained in the Karma Bulletin is accurate at the date of publication. However, Karma Automotive regularly updates technical information. Please check with your Karma Automotive Retailer and Karma Automotive service provider that the bulletin you intend to use contains the latest available information.

MODEL: Karma Revero**DATE:** January 2018**TITLE:** Seat Squeak Remedy**First Release**

Apply to mating leather on back shield trim (fig.8a)

Apply to both inboard and outboard lengths of the toe kick, the rear lower portion of the seat. (fig.8b)

Reassemble side shield and back panel onto seat



fig.8a

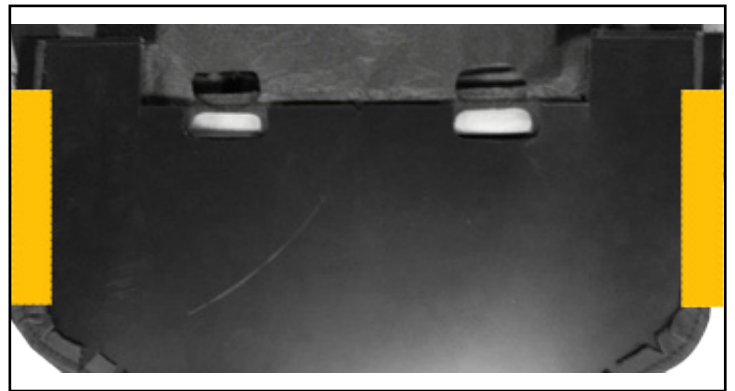


fig.8b

Karma Automotive Bulletins and service documents are intended for use by experienced and trained Technicians. If you lack the skills, tools, equipment and a suitable workshop for any procedure described in this document, we suggest you leave such repairs to a Karma retailer and service provider. See your service provider for advice on whether your vehicle may benefit from the information contained within this document. The information contained in the Karma Bulletin is accurate at the date of publication. However, Karma Automotive regularly updates technical information. Please check with your Karma Automotive Retailer and Karma Automotive service provider that the bulletin you intend to use contains the latest available information.



Service Bulletin

TB-18-86-01

MODEL: Karma Revero

DATE: January 2018

First Release

TITLE: Seat Squeak Remedy

PARTS REQUIRED:

PART NUMBER	DESCRIPTION
N/A	N/A

SHOP SUPPLIES:

DESCRIPTION
Kluberalfa lubricant (source locally with applicator)

SPECIAL TOOLS:

DESCRIPTION
N/A

CAUSAL PART:

PART NUMBER	DESCRIPTION
C131142001311CC	Driver Front Seat Assembly
C131142001410CC	Passenger Front Seat Assembly

LABOR CODES:

CODE	DESCRIPTION	TIME	DEFECT CODE
86-10-01-10	Seat BSR TB-17-86-05	1.2	86-10-01-34

SUBLET:

CODE	DESCRIPTION	AMOUNT
MSC	Kluberalfa MR 3-500 and applicator	as needed

WARRANTY DISPOSITION: This repair is covered under the New Vehicle Limited Warranty, in effect for five (5) years from the in-service date with no mileage limitation.

Karma Automotive Bulletins and service documents are intended for use by experienced and trained Technicians. If you lack the skills, tools, equipment and a suitable workshop for any procedure described in this document, we suggest you leave such repairs to a Karma retailer and service provider. See your service provider for advice on whether your vehicle may benefit from the information contained within this document. The information contained in the Karma Bulletin is accurate at the date of publication. However, Karma Automotive regularly updates technical information. Please check with your Karma Automotive Retailer and Karma Automotive service provider that the bulletin you intend to use contains the latest available information.