



Countries: Document ID: IK4300001
 Availability: Revision: 0
 Major System: SOFTWARE Created: 1/30/2018
 Current Language: English Last Modified: 1/30/2018
 Other Languages: NONE Author: Dave Schroedter
 Viewed: 39

[Less Info](#)

Hide Details

Coding Information

Copy Link 	Copy Relative Link 	Bookmark View My Bookmarks	Add to Favorites 	Print 	Provide Feedback 	Helpful 0	Not Helpful 0
---------------	------------------------	---	----------------------	-----------	----------------------	------------------	----------------------

Title: Updating OnCommand Link with Accelerator

Applies To: Accelerator

CHANGE LOG

Please refer to the change log text box below for recent changes to this article:

01/30/2018 - Initial Article Release

DESCRIPTION

This document will guide the process to update On-Command link device to latest App and Firmware version using Accelerator App.

PreCondition

Connect the OnCommand link to a vehicle like you would for an ordinary write-up.

KOEO (key on – engine off)

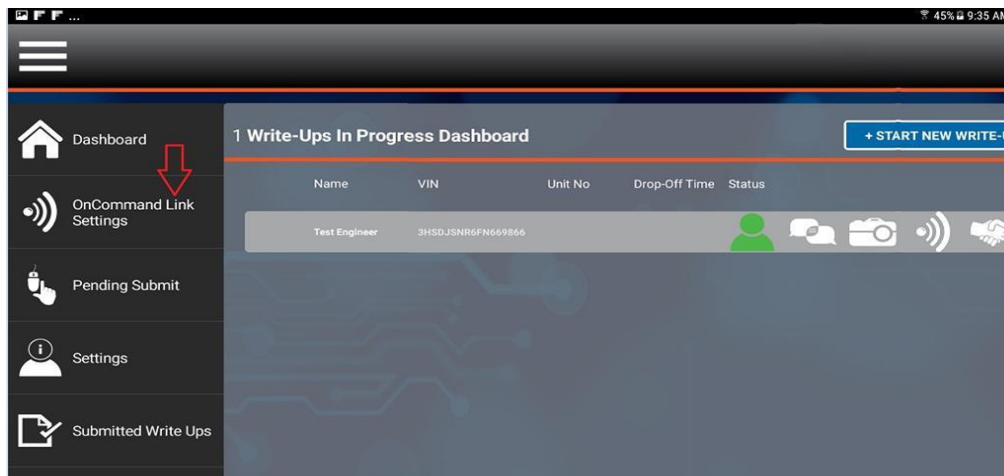
The OnCommand link must be booted up (amber light steady) before starting update process.

App version updates will take approximately 25 minutes.

Firmware version if needed will take approximately 25 additional minutes.

The tablet must be in strong signal wi-fi range during the update.

1) Go to the OnCommand Link Settings tab from the left menu.

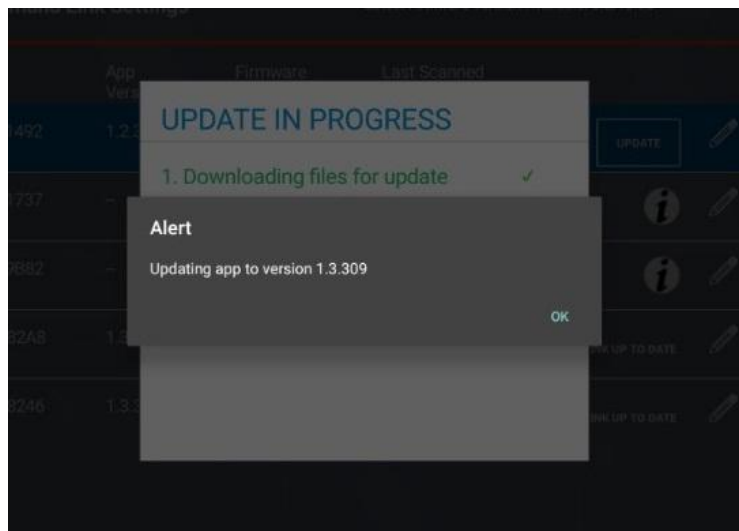


2) Look for App Version. If the current App version for your OnCommand

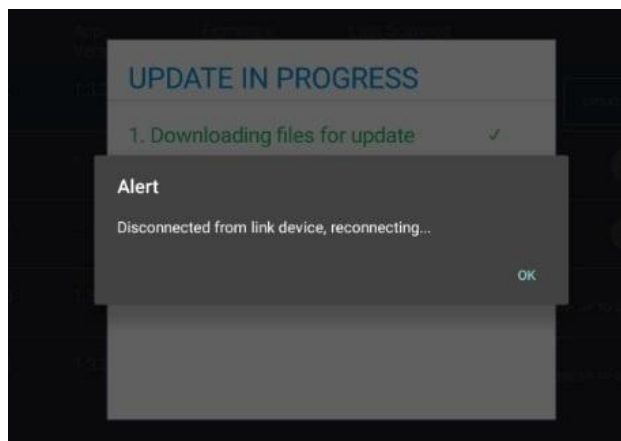
Link device is not up to the latest version, an update button will be available

OnCommand Link Settings				Latest App Version Available: 1.3.309 Latest Firmware Version Available: 3.2.18.38	
SSID	App Version	Firmware Version	Last Scanned		
60301492	1.2.33	--	2017-11-22_12:41:40	UPDATE	
F3081737	--	--	--		
F3089B82	--	--	--		
9D8482A8	1.3.309	3.2.18.38	2017-11-22_11:52:41	LINK UP TO DATE	
9D848246	1.3.309	3.2.18.38	2017-11-22_10:45:8	LINK UP TO DATE	

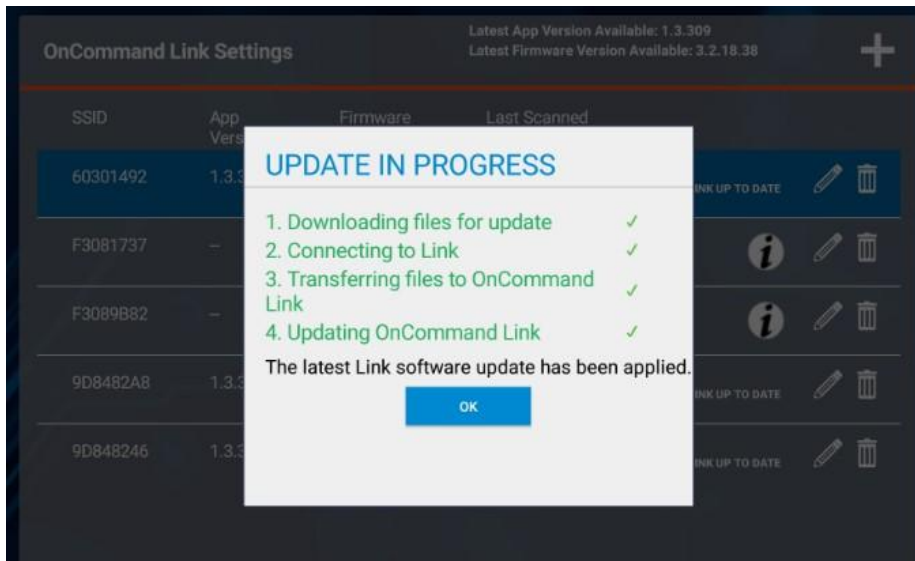
3) Click on {update} button and the app update will start



4) The update process will connect and disconnect several times during the update



5) At the end the software update will be applied

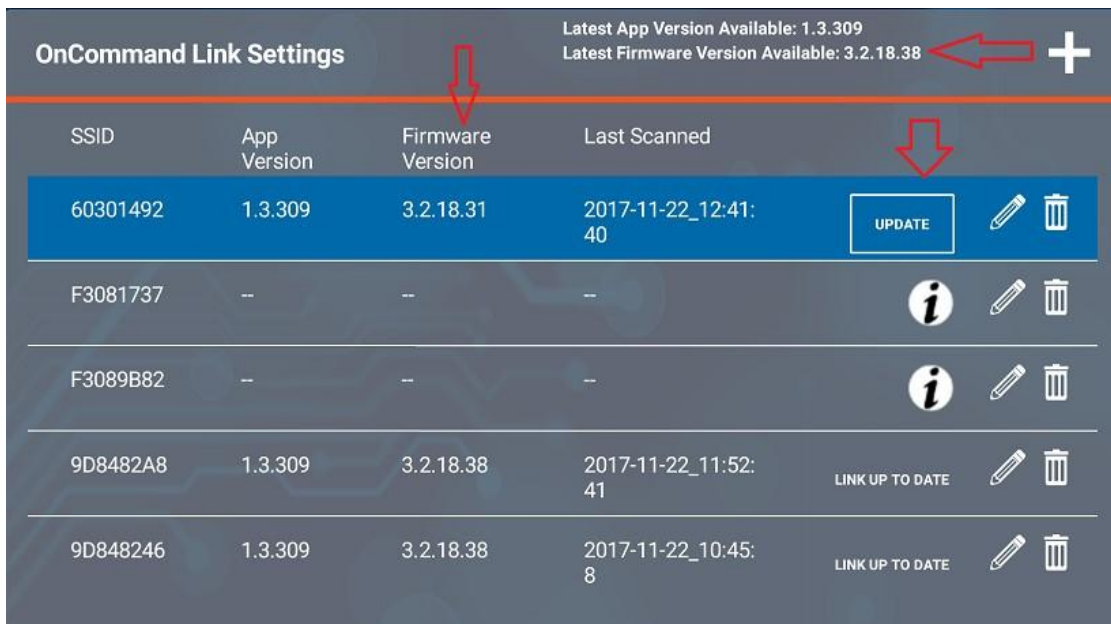


6) Verify App is updated to latest version. Your On-command link device version should match with the Latest App Version Available.



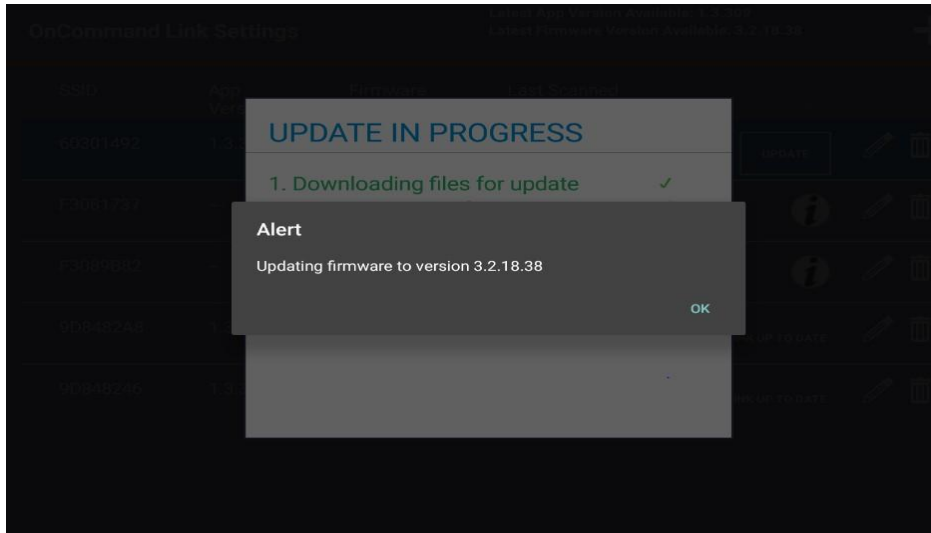
7) Firmware Update if needed

- a. After App is updated to latest version wait until amber light gets stable on the Oncommand link device (This might take few mins to get stable)
- b. Once amber light is stable. Press UPDATE button to update Firmware version to latest.



8) A few alerts will be displayed while update is in progress. Please press OK and wait until

firmware update is complete.



9) At the end of the update steps if both the app version and firmware have been updated to the current version the {update} message is replaced with {LINK UP TO DATE}.

OnCommand Link Settings				Latest App Version Available: 1.3.309	Latest Firmware Version Available: 3.2.18.38
SSID	App Version	Firmware Version	Last Scanned		
60301492	1.3.309	3.2.18.38	2017-11-22_13:25:59	LINK UP TO DATE	
F3081737	--	--	--		
F3089B82	--	--	--		
9D8482A8	1.3.309	3.2.18.38	2017-11-22_11:52:41	LINK UP TO DATE	
9D848246	1.3.309	3.2.18.38	2017-11-22_10:45:8	LINK UP TO DATE	

OTHER RESOURCES

- [OnCommand Link Essential Update](#)
- [OnCommand Link User Guide and Quick Reference Documents](#)
- [IK2600227 - OnCommand Link Application Change Log](#)

Hide Details

Feedback Information

Viewed: 38
 Helpful: 0
 Not Helpful: 0

No Feedback Found