



Solution

Title (customer effect) Volvo Chassis - Equipped With Volvo Active Driver Assist (VADA), With Or Without Lane Departure Warning (LDWS) - Diagnostic Trouble Code (DTC) SPN 70 FMI 9, Bendix Code 64 With Possible "Lane Departure Warning Malfunction" Message - US17 And Newer

Cause Volvo Chassis equipped with Volvo Active Driver Assist may display DTC / Fault code SPN 70 FMI 9 on Premium Tech Tool (PTT) or J-Pro, and code 64 in Bendix ACOM software.

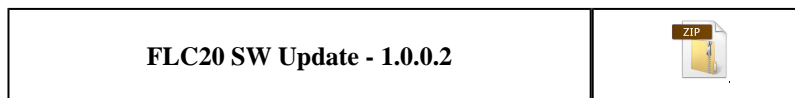
Solution

Overview

Certain Volvo chassis equipped with VADA may log DTC / Fault code SPN 70 FMI 9. This fault will appear as Code 64 when checked with the FLC20 module of Bendix ACOM software. The fault may be present in chassis with or without a Lane Departure Warning System. A "Lane Departure Warning Malfunction" alert may also be present in the Driver Information Display (DID). It has been determined that a software update to the Forward Looking Camera (FLC20) module via the ACOM software will correct the issue.

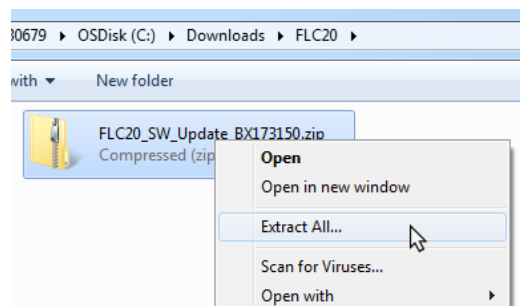
Repair

1. Begin by downloading the ZIP file below:

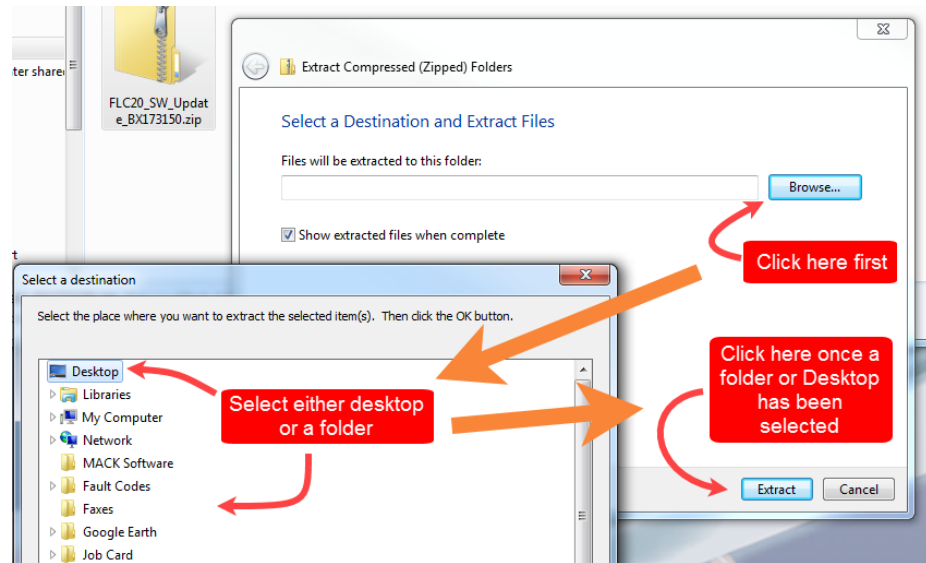


2. Extract the executable (.exe) file to desktop or a folder where it can be easily located:

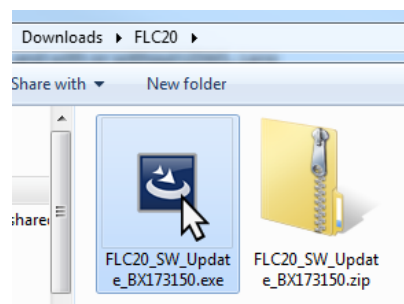
- A. Right-click on the ZIP file and select "Extract All..."



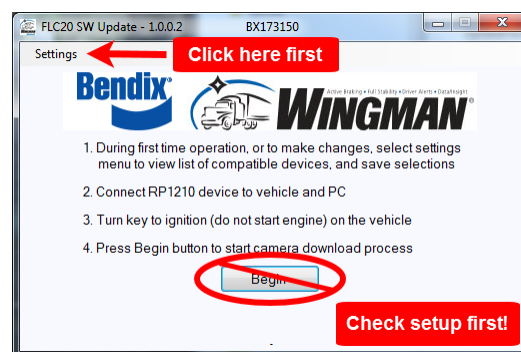
B. Click the Browse button and pick either Desktop or another folder where the file can be easily found. Click the OK button once the folder is picked, then Click the Extract button.



3. Double-click the executable file to run the update software:

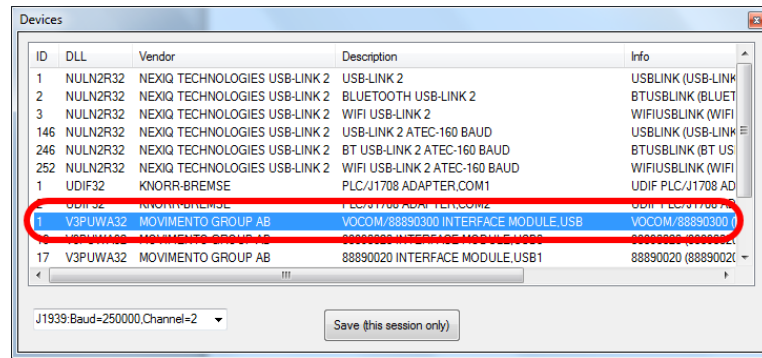


4. The program screen will open. Before clicking Begin, open the Settings menu:

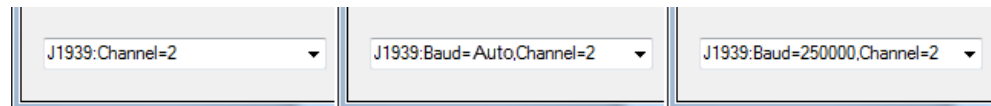


5. Make sure the correct adapter and Port settings are selected

A. Choose the VCOM adapter from the list as shown below:



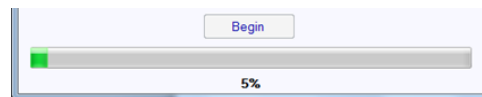
B. From the port settings drop-down in the lower left-hand corner of the window, select the correct port. **The three options below are the only ones that will work:**



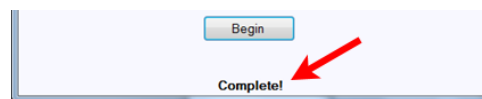
C. Click the Save button to close the window and return to the main Window.

6. Click "Begin" to start the Software Update

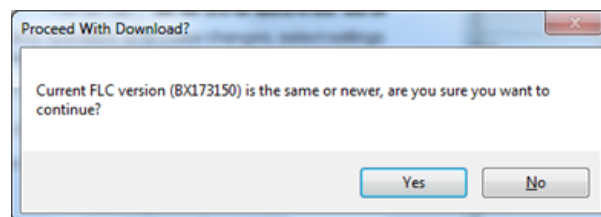
A. A progress bar at the bottom of the window will show installation progress.



B. A Complete message will be displayed when the update has finished.



NOTE: If the error message shown below appears, the module software does not need to be updated.



Solution visibility

Dealer distribution

Function(s)/component(s) affected

Function affected

Fusion , Volvo Active Driver Assist , MID 136 ABS , MID 140 – IC04 / IC05 , Diagnostic tool

Function Group

Function Group	366 automatic monitoring and control , 38 instrument; sensor; warning and information system , 593 anti-lock brake (anti-skid)
----------------	--------------------------------------------------------------------------------------------------------------------------------

Customer effect

Main customer effect	calibration/programming/pairing/missing operation , diagnostics/methodology , fault code/display
----------------------	--------------------------------------------------------------------------------------------------

Lights/Messages on information display	LANE KEEPING SYSTEM Check system
----------------------------------------	----------------------------------

Fault code(s)

US10 Fault Codes	SPN 70 FMI 9
------------------	--------------

Conditions

Vehicle operating mode	when driving , when stationary
------------------------	--------------------------------

Frequency of occurrence of problem	random
------------------------------------	--------

Administration

Author	RU4469V
--------	---------

Dealer ID	RU4469V
-----------	---------

Last modified by	RU4469V
------------------	---------

Creation date	04-01-2018 18:01
---------------	------------------

Date of last update	24-01-2018 22:01
---------------------	------------------

Status	Published
--------	-----------

NA_VOLVO_Vehicle_Range

NA_VOLVO_Vehicle_Range	VNR , VNL , VAH
-------------------------------	-----------------

Engine family

Engine family	Volvo
---------------	-------

Emission Standard

Emission Standard	2018 , OBD2017 , US17 GHG
-------------------	---------------------------