

February 9, 2018

Version 1

Shutter Set for Capless Fuel Filler (Mis-Fuel Inhibit Device) Is Frozen

AFFECTED VEHICLES

Year	Model	Trim	VIN Range
2017	MDX	ALL	ALL
2018		ALL except Sport Hybrid	

SYMPTOM

The client is unable to insert the fuel nozzle into the filler neck and fuel the vehicle in cold weather.

PROBABLE CAUSE

Water or moisture has entered the fueling area and frozen the capless fuel shutter (mis-fuel inhibit device) in the fuel filler neck.

CORRECTIVE ACTION

Replace the capless shutter set (mis-fuel inhibit device). Install the updated fuel filler lid cover and apply the fuel lid labels.

WARRANTY CLAIM INFORMATION

The normal warranty applies.

Operation Number	Description	Flat Rate Time	Defect Code	Symptom Code	Template ID	Failed Part Number
3101U2	Replace the capless fuel shutter set and fuel lid cover. Apply the fuel lid labels.	0.7 hr	03214	03217	B18007A	06160-TG7-A01

Skill Level: Repair Technician

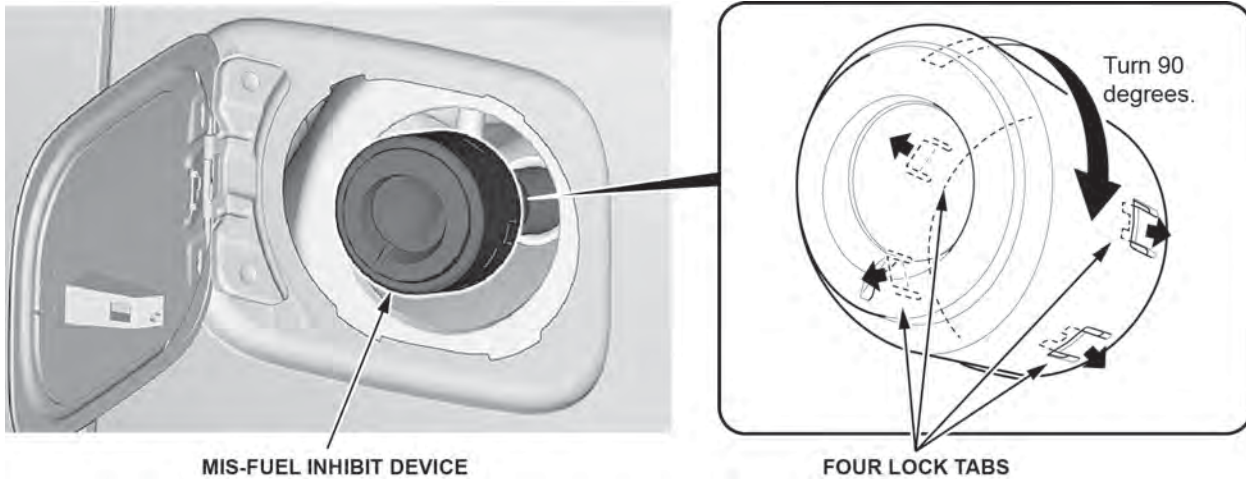
CLIENT INFORMATION: The information in this bulletin is intended for use only by skilled technicians who have the proper tools, equipment, and training to correctly and safely maintain your vehicle. These procedures should not be attempted by "do-it-yourselfers," and you should not assume this bulletin applies to your vehicle, or that your vehicle has the condition described. To determine whether this information applies, contact an authorized Acura automobile dealer.

PARTS INFORMATION

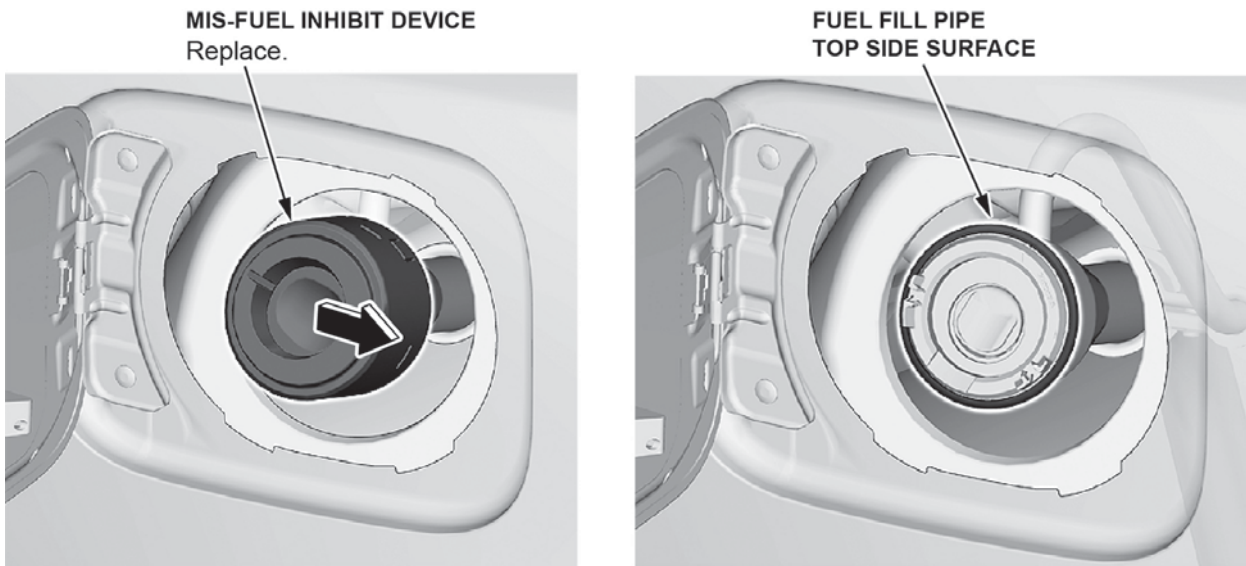
Part Name	Part Number	Quantity
Capless Information Label	17669-TG7-A01	1
Fuel Filler Caution Label	17669-R9S-A10	1
Fuel Filler Lid Cover	74481-TZ5-A02	1
Capless Shutter Set (Mis-Fuel Inhibit Device)	06160-TG7-A01	1

REPAIR PROCEDURE

1. Remove the mis-fuel inhibit device (fuel shutter set) by prying out the four lock tabs and turning the assembly 90 degrees.



2. Tilt the mis-fuel inhibit device towards the rear of the vehicle, as shown, to remove it from the fuel fill pipe.



NOTE

Be careful not to damage the fuel fill pipe or the main flap unit (fuel fill pipe top side surface); they **do not** need to be replaced at this time.

3. Install the new mis-fuel inhibit device.
4. Apply the fuel lid labels to the new fuel lid cover as shown.

NOTE

Make sure the new fuel lid cover is clean and grease-free, especially on the surfaces where the labels will be applied.

P/N 17669-TG7-A01



P/N 17669-R9S-A10



5. Remove the original fuel lid cover.

5.1. Lift the fuel lid cover locking tab.



5.2. Slide the cover towards the fuel door hinge.



5.3. Slide the cover until the four tabs disengage from the slots in the fuel door.



6. Installation of the fuel lid cover is the reverse of removal. Verify all the tabs are engaged, and slide the cover away from the fuel door hinge until it clicks. This indicates the fuel lid cover is secured and correctly installed.



7. Make sure the fuel door closes and latches without contact or interference from the mis-fuel inhibit device and surrounding area.
8. Make sure the fuel door release works correctly when using the driver's door switch.

END