



**SERVICE  
CENTER  
INFORMATION**

**SCI17-35**

DATE :	December 2017	SECTION :	23 ACCESSORIES
SUBJECT :	ELD INTERFACE FOR PRE-OBD MULTIPLEX VEHICLES – FMS GATEWAY BENCH PROGRAMMING		

**APPLICATION**

Model	VIN
H3 Series Vehicles Model Year : 2008 - 2013	H3 Series Vehicles equipped with a US07 or US10 Volvo Engine From 2PCH334938C711 <u>1202</u> up to 2PCH33497DC71 <u>2363</u>
H3 Series Vehicles Model Year : 2005 - 2008	H3 Series Vehicles equipped with a Multiplexed Detroit Diesel Engine From 2PCH334995101 <u>0168</u> up to 2PCH334918C711 <u>1201</u> incl.
X3 Series Vehicles Model Year : 2008 - 2013	X3 Series Vehicles equipped with a US07 or US10 Volvo Engine From 2PCG3349X8C72 <u>9451</u> up to 2PCY3349XDC73 <u>5457</u>
X3 Series Vehicles Model Year : 2007 - 2008	X3 Series Vehicles equipped with a Multiplexed Detroit Diesel Engine From 2PCG334947102 <u>8933</u> up to 2PCG334918C72 <u>9449</u> incl.

**DESCRIPTION**

The intent of this procedure is to guide you through the steps required to bench program the FMS gateway module used in the ELD (Electronic Logging Device) interface kit for pre-OBD13 vehicles.

**SPECIAL TOOLS**

Description	Qty
Laptop with PTT (Premium TechTool) & related cables.	1

**MATERIAL**

Use this procedure with the following part:

Part No.	Description	Qty
20890176	Control Unit FMS Gateway	1



**DANGER**

Park vehicle safely, apply parking brake, stop engine. Prior to working on the vehicle, set the ignition switch to the OFF position and trip the main circuit breakers equipped with a trip button.

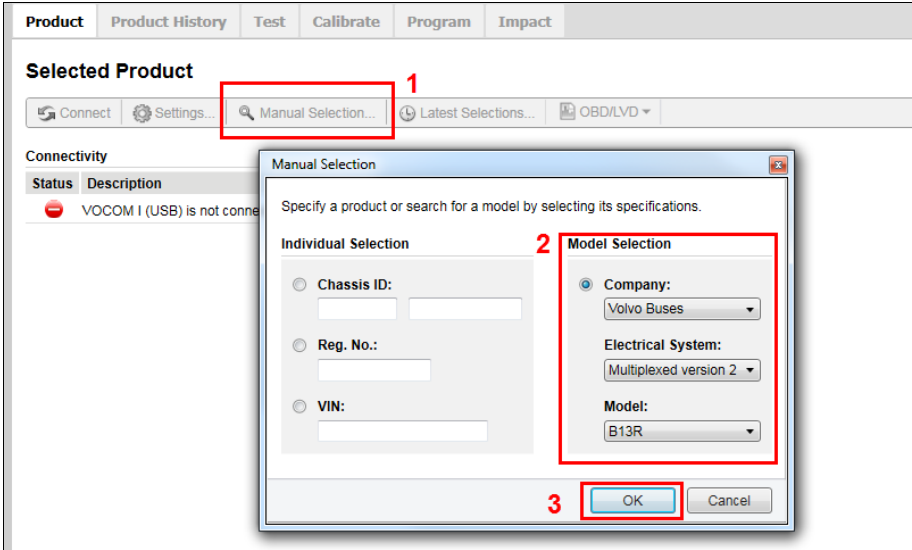
**NOTE**

A 12V power supply, a diagnostic adapter harness and an interface harness are required to perform the FMS gateway programming. Harnesses can be fabricated using diagrams provided at the end of this instruction.

1. Connect the FMS gateway module and the 12 V power supply to the diagnostic adapter.
2. Connect the diagnostic adapter to the computer via Vocom device (round 9 pin connector).
3. Connect to PTT (Premium Tech Tool) using Warehouse ID (See table below).

Partner ID	Branch location	Warehouse User ID
CA038364	Canada	<b>M341565 or xv79675</b>
US018769	New Jersey	<b>xv79676</b>
US018802	Texas	<b>xv79677</b>
US038362	California	<b>xv79679</b>
US038363	Tennessee	<b>xv79680</b>
US14744	Florida	<b>xv79681</b>

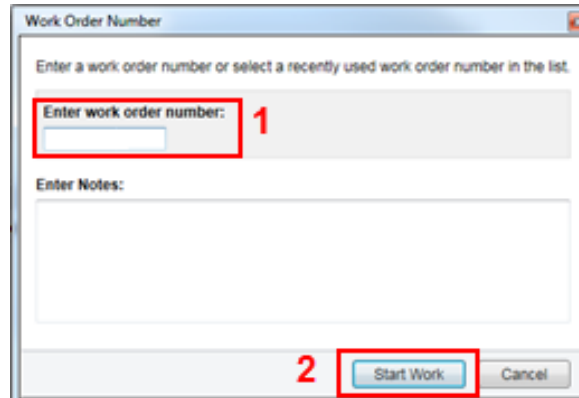
4. Click on “Manual Selection”, enter the following information in the “Model Section” then click “OK”.



**NOTE**

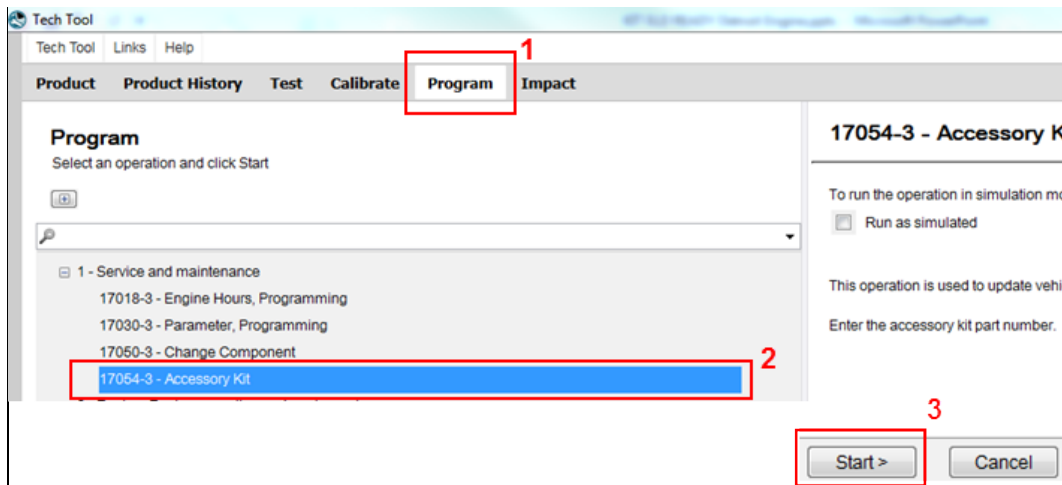
Connect with Model B13R since MID179 Control Unit Programming is not listed for Models PREVH & PREVX

5. Enter Work Order number then click “Start Work”.

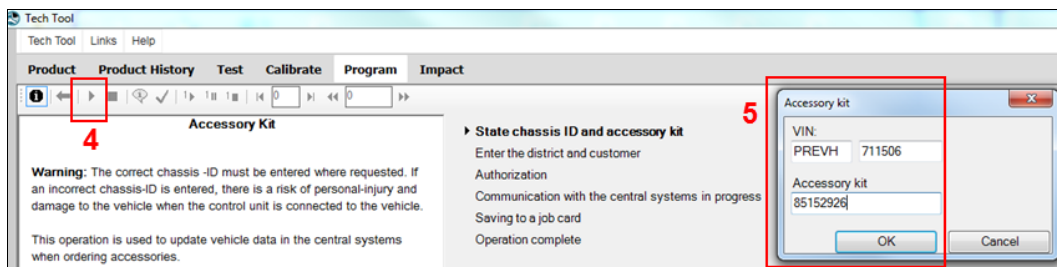


6. If the gateway module is to be used in a vehicle equipped with a *Volvo D13 engine*; Run accessory kit # 85152926 following the steps below. If the vehicle is equipped with a Detroit Diesel engine, go to step 7.

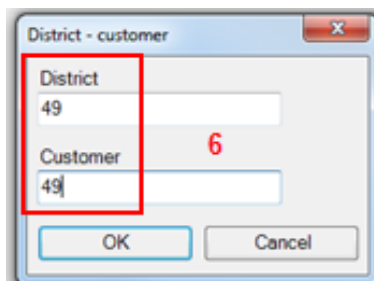
- Select the “Program” tab
- Select “Accessory Kit”
- Click “Start”



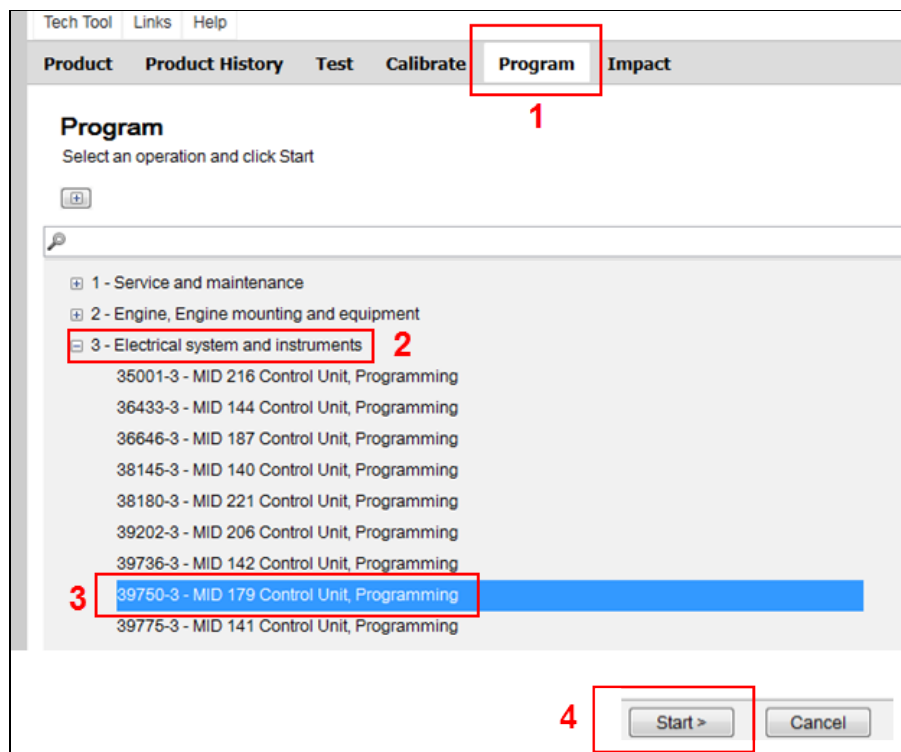
- Click the “Play” button.
- Enter Chassis and Accessory Kit numbers, then click “OK”



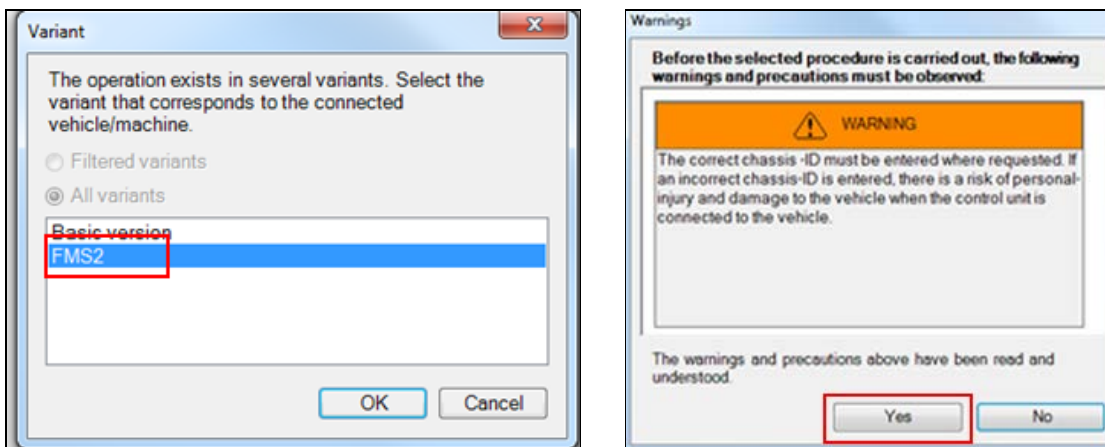
- Enter “District” and “Customer” number 49; click “OK” and wait until the operation is shown as completed.



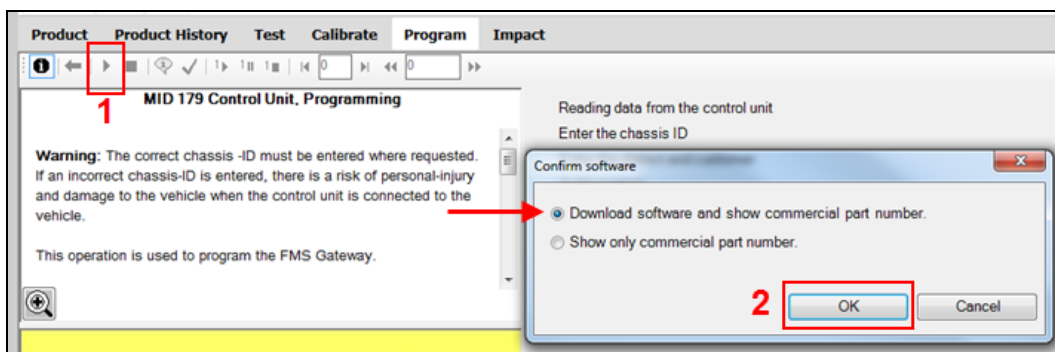
7. Go back to “Program” in PTT and select “MID 179 Control Unit, Programming” in the electrical system and instruments drop down menu. Click “Start”.



8. Select variant "FMS2" and click "OK". Click "Yes" on the warning box.

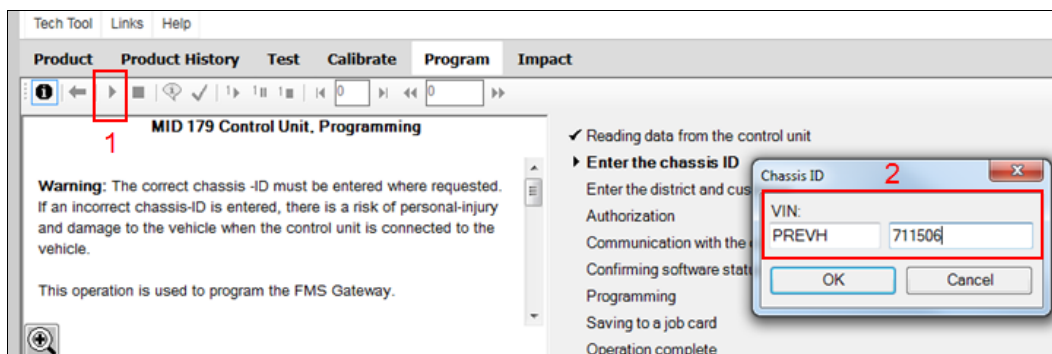


9. Click the "Play" button and confirm the "Download Software" option by clicking "OK".

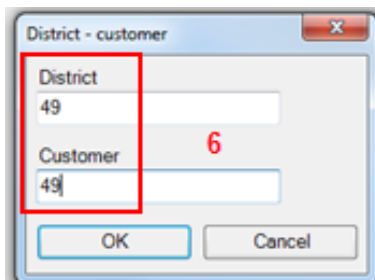


10. Click Play and enter vehicle chassis ID.

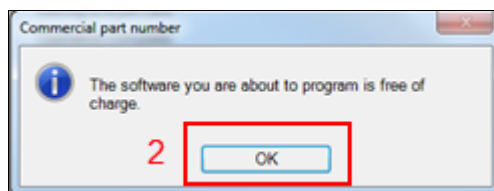
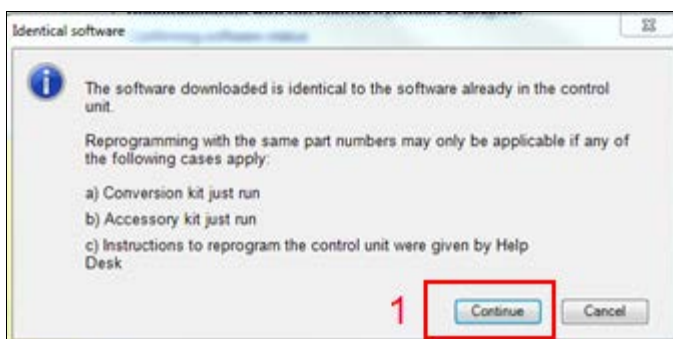
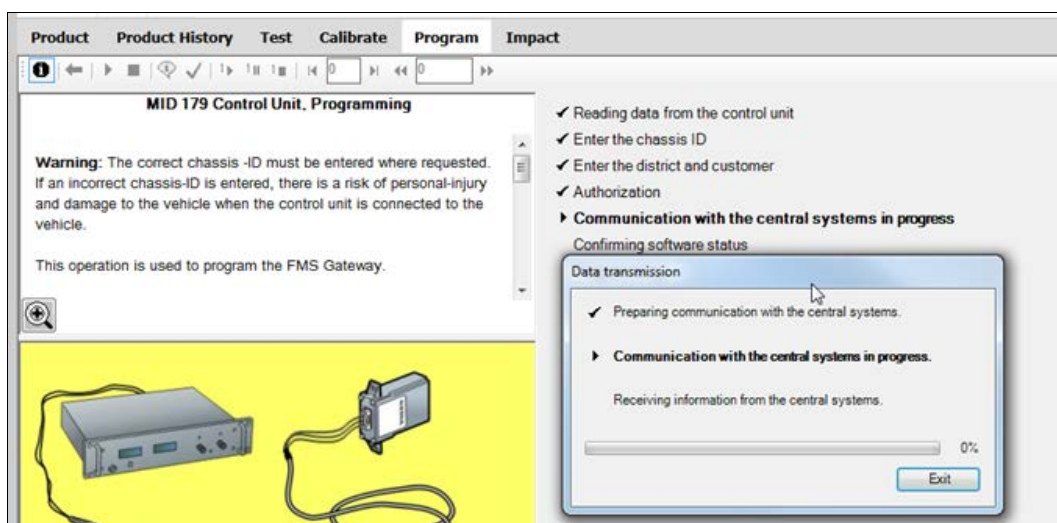
- For all vehicles equipped with a US07 or US10 Volvo engine, enter vehicle specific chassis ID.
- For vehicles equipped with a Detroit Diesel engine, enter generic chassis ID PREVH 711506.

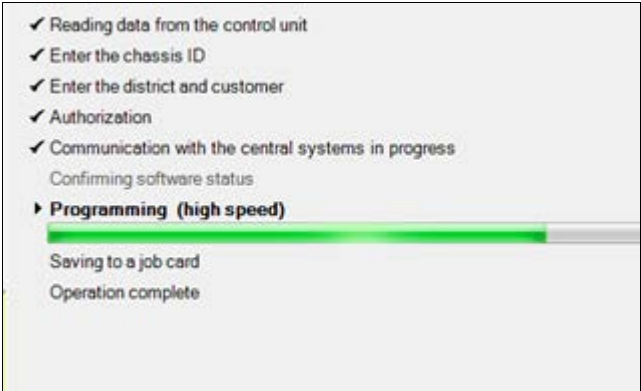
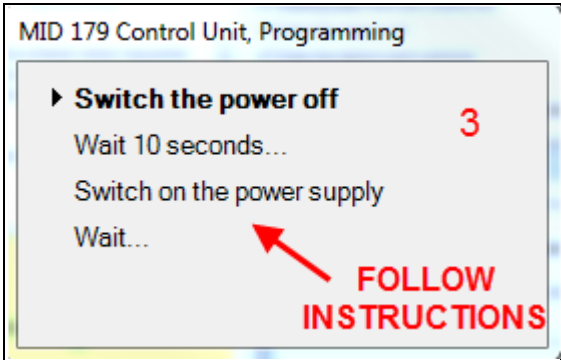
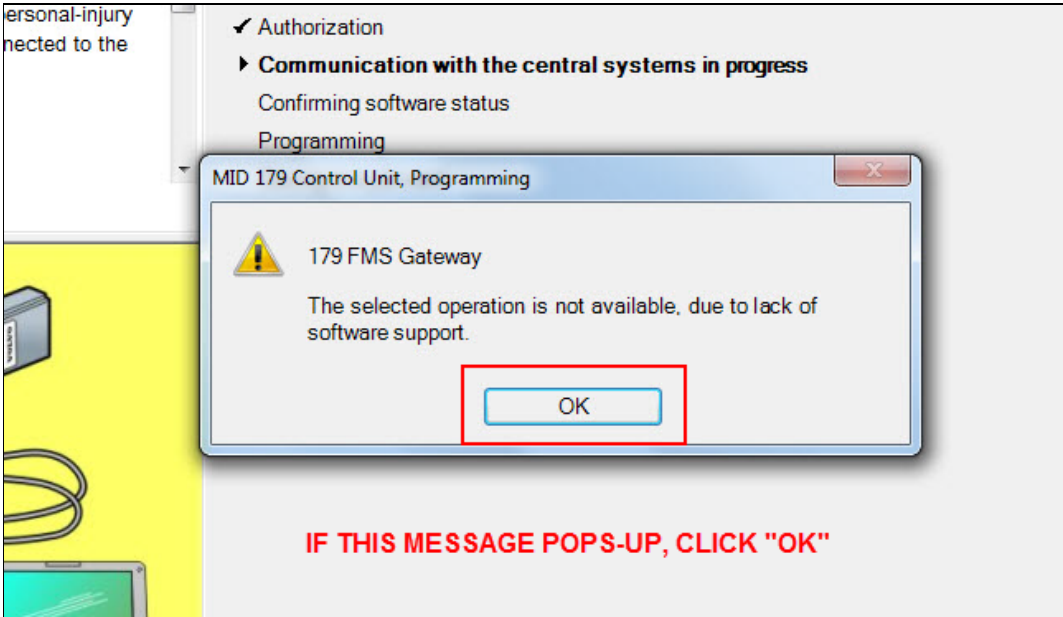


11. Enter "District" and "Customer" number 49; click "OK".

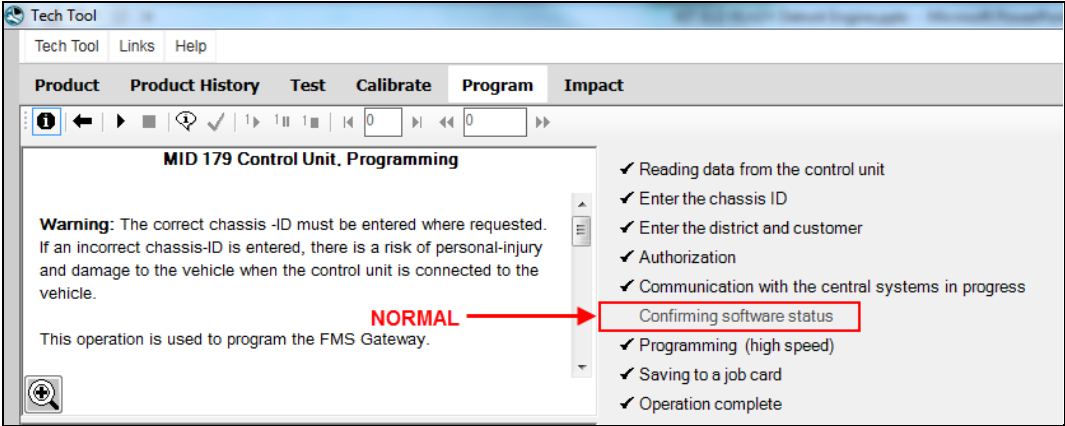


12. When prompted, validate the software information and wait until the operation is complete.

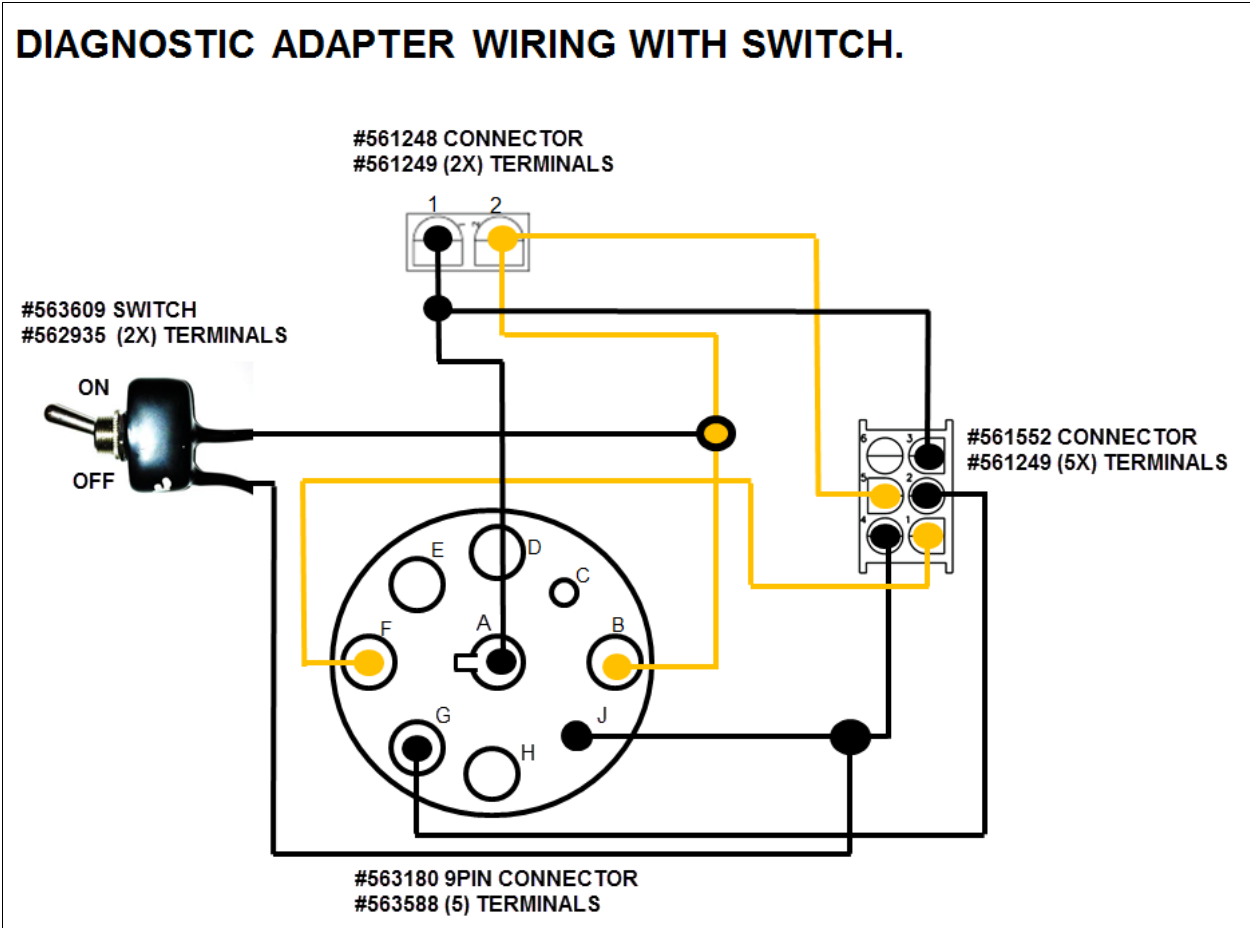




13. Make sure all operations are marked as completed (software status will remain unchecked) and exit Tech Tool. Complete the in vehicle ELD interface kit installation.



## HARNESSES IDENTIFICATION & SPECIFICATIONS

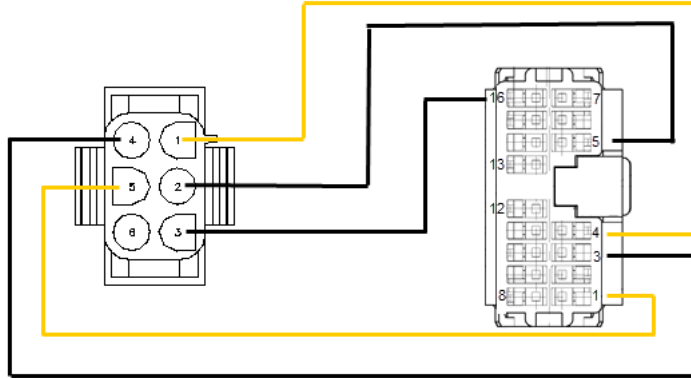


# FMS GATEWAY INTERFACE HARNESS

# 561515 or N59507  
CONNECTOR

Cavity	Circuit
1	900
2	901
3	00B
4	439
5	12VD
6	

# 561673 (5X)  
TERMINALS



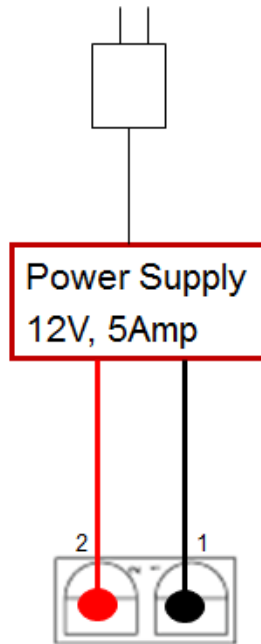
300 MM

# 978308 or N44678  
CONNECTOR

Cavity	Circuit
1	12VD
3	439
4	900
5	901
6	
7	
13	
14	
16	00B

# 562771 (5X)  
TERMINALS

# POWER SUPPLY WIRING



#561247

