



# SERVICE BULLETIN

Classification: EC13-007b	Reference: NTB13-054b	Date: January 11, 2018
------------------------------	--------------------------	---------------------------

## ALTIMA AND ROGUE; ENGINE TURNS OFF OR HESITATES WHEN ACCELERATING FROM A STOP DURING HOT AMBIENT TEMPERATURES (+100° F)

This bulletin has been amended. The APPLIED VEHICLES section and Table A on pages 5 and 6 have been revised. No other changes have been made. Please discard previous versions of this bulletin.

**APPLIED VEHICLES:** 2013-2017 Altima Sedan (L33)  
2014-2017 Rogue (T32)

**APPLIED ENGINE:** QR25DE

### IF YOU CONFIRM

The engine turns OFF or hesitates when accelerating from a stop during hot ambient temperatures (+100° F),

### AND

The engine is able to be restarted.

### ACTION

1. Refer to step 6 in the **SERVICE PROCEDURE** to see if this bulletin applies to the vehicle you are working on.
2. If this bulletin applies, reprogram the ECM.

**IMPORTANT:** The purpose of **ACTION** (above) is to give you a quick idea of the work you will be performing. You **MUST** closely follow the entire **SERVICE PROCEDURE** as it contains information that is essential to successfully completing this repair.

Nissan Bulletins are intended for use by qualified technicians, not 'do-it-yourselfers'. Qualified technicians are properly trained individuals who have the equipment, tools, safety instruction, and know-how to do a job properly and safely. NOTE: If you believe that a described condition may apply to a particular vehicle, DO NOT assume that it does. See your Nissan dealer to determine if this applies to your vehicle.

## SERVICE PROCEDURE

**IMPORTANT:** Before starting, make sure:

- ASIST on the CONSULT PC has been synchronized (updated) to the current date.
- All CONSULT-III plus (C-III plus) software updates (if any) have been installed.

**NOTE:**

- Most instructions for reprogramming with C-III plus are displayed on the CONSULT PC screen.
- If you are not familiar with the reprogramming procedure, [click here](#). This will link you to the "CONSULT- III plus (C-III plus) Reprogramming" general procedure.

### Preparation for Reprogramming

- Take the vehicle for a 10 minute drive in order to meet the following Idle Air Volume Learn (IAVL) conditions:
  - Engine coolant temperature: 70 -100°C (158 -212°F)
  - Battery voltage: More than 12.9V (At idle)
  - Transmission: Warmed up



Figure A

**NOTE:**

- After ECM reprogramming is complete, you will be required to perform Throttle Valve Closed Position, Idle Air Volume Learn (IAVL), and Accelerator Closed Position.
- The above conditions are required for the IAVL to complete.

**CAUTION:**

- Connect a battery charger to the vehicle battery. The vehicle battery voltage must stay between 12.0V and 15.5V during reprogramming, or the ECM may be damaged.
- Be sure to turn OFF all vehicle electrical loads. If a vehicle electrical load remains ON, the ECM may be damaged.
- Be sure to connect the AC Adapter. If the CONSULT PC battery voltage drops during reprogramming, the process will be interrupted and the ECM may be damaged.
- Turn OFF all external Bluetooth® devices (e.g., cell phones, printers, etc.) within range of the CONSULT PC and the VI. If Bluetooth® signal waves are within range of the CONSULT PC during reprogramming, reprogramming may be interrupted and the ECM may be damaged.

1. Connect the CONSULT PC to the vehicle to begin the reprogramming procedure.
2. Start C-III plus.
3. Wait for the plus VI to be recognized.
  - The **Serial No.** will display when the plus VI is recognized.
4. Select **Re/programming, Configuration**.

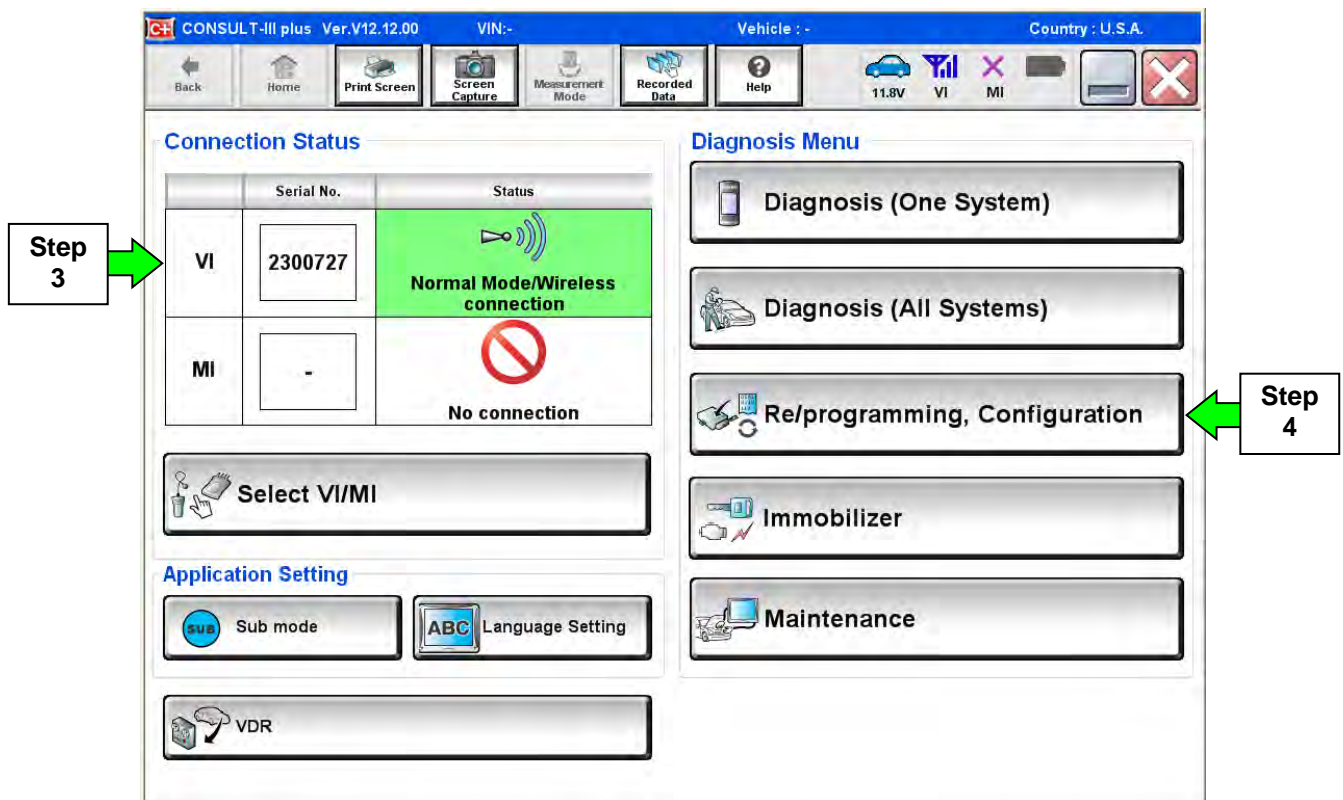


Figure 1

5. Follow the C-III plus on-screen instructions and navigate to the screen shown in Figure 2 on the **next page**.

6. When you get to the screen shown in Figure 2, confirm this bulletin applies as follows:

A. Find the ECM **Part Number** and write it on the repair order.

**NOTE:** This is the current ECM Part Number (P/N).

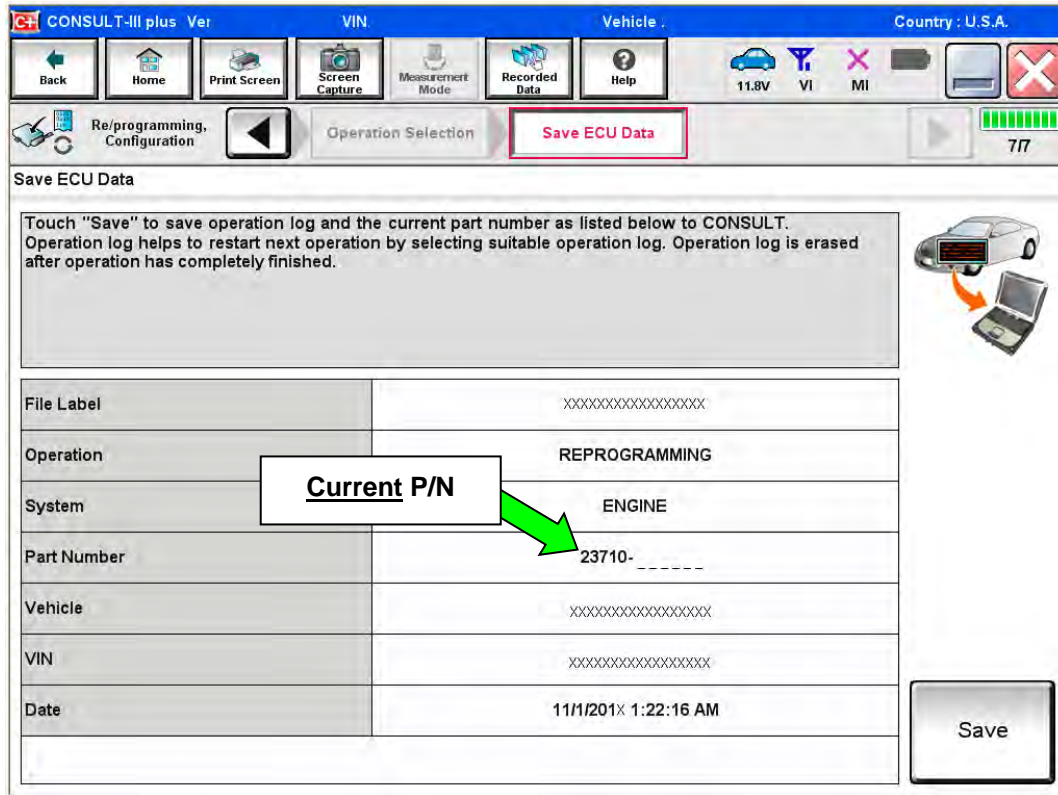


Figure 2

B. Compare the P/N you wrote down to the numbers in the **Current ECM Part Number** column in **Table A** on pages 5 and 6.

- If there is a match, this bulletin applies. Continue with the reprogramming procedure.
- If there is not a match, this bulletin does not apply. Return to ASIST for further diagnostic and repair information.

**Table A - Altima**

See next page for Rogue vehicles.

Model	Year	Current ECM Part Number: 23710 -
<b>Altima Sedan with QR25DE Engine</b>	2013	3TA0A, 3TA0B, 3TA0C, 3TA1B, 3TA1C, 3TA1D, 3TA6A, 3TA6B, 3TA6C, 3TA7A, 3TA7B, 3TA7C, 3TA8A, 3TA8B, 3TA8C, 3TY0A, 3TY0B, 3TY0C, 3TY1A, 3TY1B, 3TY1C, 3TY6A, 3TY6B, 3TY6C, 3TY7A, 3TY7B, 3TY7C, 3TY8A, 3TY8B, 3TY8C
	2014	9HM3A, 9HM3B, 9HM4A, 9HM4B, 9HM5A, 9HM5B, 9HM6A, 9HM6B, 9HM7A, 9HM7B, 9HM8A, 9HM8B
	2015	9HP0A, 9HP0B, 9HP0C, 9HP0D, 9HP1A, 9HP1B, 9HP1C, 9HP1D, 9HP2A, 9HP2B, 9HP2C, 9HP2D, 9HP3A, 9HP3B, 9HP3C, 9HP3D, 9HP3E, 9HP4A, 9HP4B, 9HP4C, 9HP4D, 9HP4E, 9HP5A, 9HP5B, 9HP5C, 9HP5D, 9HP5E
	2016	9HN4A, 9HN4B, 9HN4C, 9HN4D, 9HN4E, 9HN5A, 9HN5B, 9HN5C, 9HN5D, 9HN5E, 9HN6A, 9HN6B, 9HN6C, 9HN6D, 9HN6E, 9HN7A, 9HN7B, 9HN7C, 9HN7D, 9HN7E, 9HN8A, 9HN8B, 9HN8C, 9HN8D, 9HN8E, 3TY2A, 3TY2B, 3TY2C, 3TY2D, 3TY2E, 3TY3A, 3TY3B, 3TY3C, 3TY3D, 3TY3E, 3TY4A, 3TY4B, 3TY4C, 3TY4D, 3TY4E, 3TY5A, 3TY5B, 3TY5C, 3TY5D, 3TY5E, 3TY9A, 3TY9B, 3TY9C, 3TY9D, 3TY9E, 3TH0A, 3TH1A, 3TH2A, 3TH3A, 3TH4A, 3TH5A, 3TH6A, 3TH7A, 3TH8A, 3TH9A
	2017	9HL0A, 9HL0B, 9HL0D, 9HL1A, 9HL1B, 9HL1D, 9HL2A, 9HL2B, 9HL2D 9HL3A, 9HL3B, 9HL3D, 9HL4A, 9HL4B, 9HL4D 3TF7A, 3TF8A, 3TF9A

**Table A - Rogue**

Model	Year	Current ECM Part Number: 23710 -
<b>Rogue with QR25DE Engine</b>	2014	4BA1A, 4BA1B, 4BA2A, 4BA2B
	2015	5HA1A, 5HA1B, 5HA2A, 5HA2B, 5HA3A, 5HA3B, 5HA3C, 5HA4A, 5HA4B, 5HA4C
	2016	5HB0A, 5HB1A, 5HB2A, 5HB3A, 5HJ0A, 5HJ0B, 5HJ0C, 5HJ0D, 5HJ0E, 5HJ1A, 5HJ1B, 5HJ1C, 5HJ1D, 5HJ1E, 5HJ2A, 5HJ2B, 5HJ2C, 5HJ2D, 5HJ2E, 5HJ3A, 5HJ3B, 5HJ3C, 5HJ3D, 5HJ3E, 5HJ4A, 5HJ4B, 5HJ5A, 5HJ5B, 5HJ6A, 5HJ6B, 5HJ7A, 5HJ7B 4BU0A, 4BU1A, 4BU2A, 4BU3A, 4BU4A, 4BU5A, 4BU6A, 4BU7A, 4BT0A, 4BT0B, 4BT1A, 4BT1B, 4BT2A, 4BT2B, 4BT3A, 4BT3B, 4BT4A, 4BT4B, 4BT5A, 4BT5B, 4BT6A, 4BT6B, 4BT7A, 4BT7B, 6FJ0A, 6FJ0B, 6FJ0C, 6FJ0D, 6FJ0E, 6FJ1A, 6FJ1B, 6FJ1C, 6FJ1D, 6FJ1E, 6FJ2A, 6FJ2B, 6FJ2C, 6FJ2D, 6FJ2E, 6FJ3A, 6FJ3B, 6FJ3C, 6FJ3D, 6FJ3E, 6FJ4A, 6FJ4B, 6FJ4C, 6FJ4D, 6FJ4E, 6FJ5A, 6FJ5B, 6FJ5C, 6FJ5D, 6FJ5E, 6FJ6A, 6FJ6B, 6FJ6C, 6FJ6D, 6FJ6E, 6FJ7A, 6FJ7B, 6FJ7C, 6FJ7D, 6FJ7E, 6FK0A, 6FK0B, 6FK0C, 6FK0D, 6FK1A, 6FK1B, 6FK1C, 6FK1D, 6FK2A, 6FK2B, 6FK2C, 6FK2D, 6FK3C, 6FK3D
	2017	6FL0A, 6FL0B, 6FL0C, 6FL0D, 6FL1A, 6FL1B, 6FL1C, 6FL1D, 6FL2A, 6FL2B, 6FL2C, 6FL2D, 6FL3A, 6FL3B, 6FL3C, 6FL3D, 6FL4C, 6FL4D, 6FL5C, 6FL5D, 6FL6C, 6FL6D, 7FF0A, 7FF1A, 7FF2A, 7FF3A, 7FF4A, 7FF5A, 7FF6A, 7FF7A, 7FF8A, 5HK0A, 5HK0B, 5HK0C, 5HK0D, 5HK1A, 5HK1B, 5HK1C, 5HK1D, 5HK2C, 5HK2D 7FP0A, 7FP0B, 7FP0C, 7FP0D, 7FP1A, 7FP1B, 7FP1C, 7FP1D, 7FP2A, 7FP2B, 7FP2C, 7FP2D, 7FP3A, 7FP3B, 7FP3C, 7FP3D, 7FP4C, 7FP4D, 7FP5C, 7FP5D, 7FP6C, 7FP6D, 7FR3A, 7FR4A, 7FR5A, 7FR6A

7. Follow the on-screen instructions to navigate C-III plus and reprogram the ECM.

**NOTES:**

- In some cases, more than one new P/N for reprogramming is available.
  - In this case, the screen in Figure 3 displays.
  - Select and use the reprogramming option that **does not** have the message “Caution! Use ONLY with NTBXX-XXX”.
- If you get this screen and it is blank (no reprogramming listed), it means there is no reprogramming available for this vehicle.

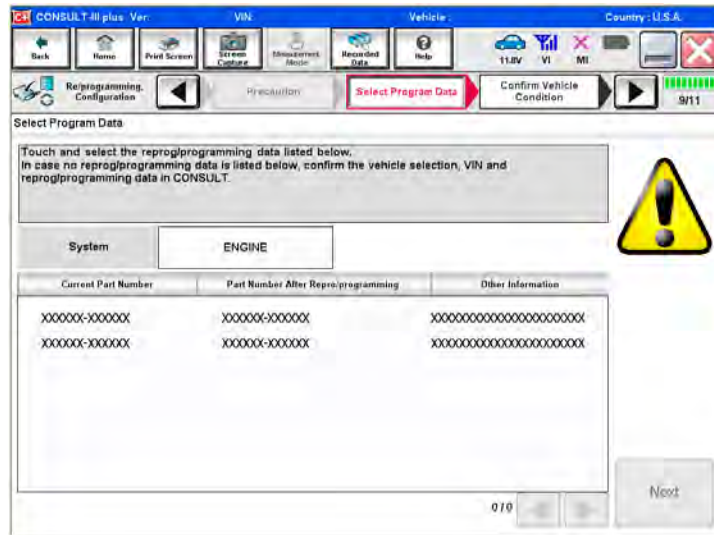


Figure 3

- Before reprogramming will start, you will be required to enter your User Name and Password.
  - The CONSULT PC must be connected to the Internet (Wi-Fi or cable).
  - If you do not know your User Name and Password, contact your Service Manager.

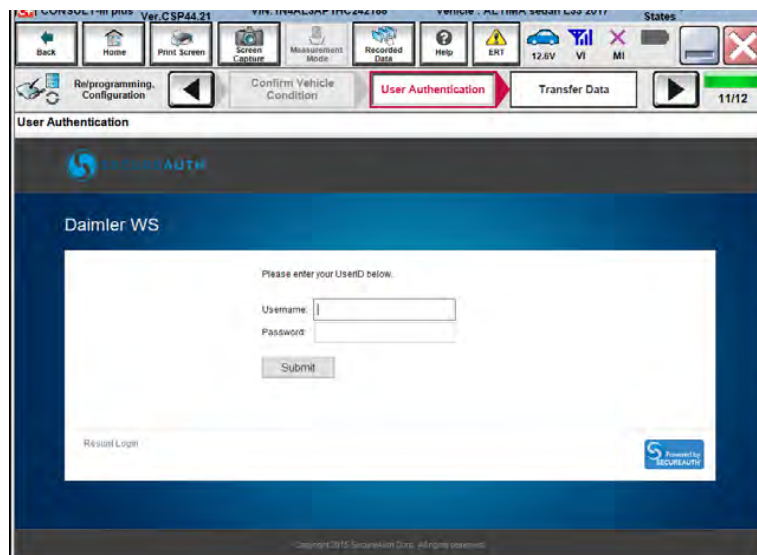


Figure 4

8. When the screen in Figure 5 displays, reprogramming is complete.

**NOTE:** If the screen in Figure 5 does not display (which indicates reprogramming did not complete), refer to the information on the next page.

9. Disconnect the battery charger from the vehicle.

10. Select **Next**.

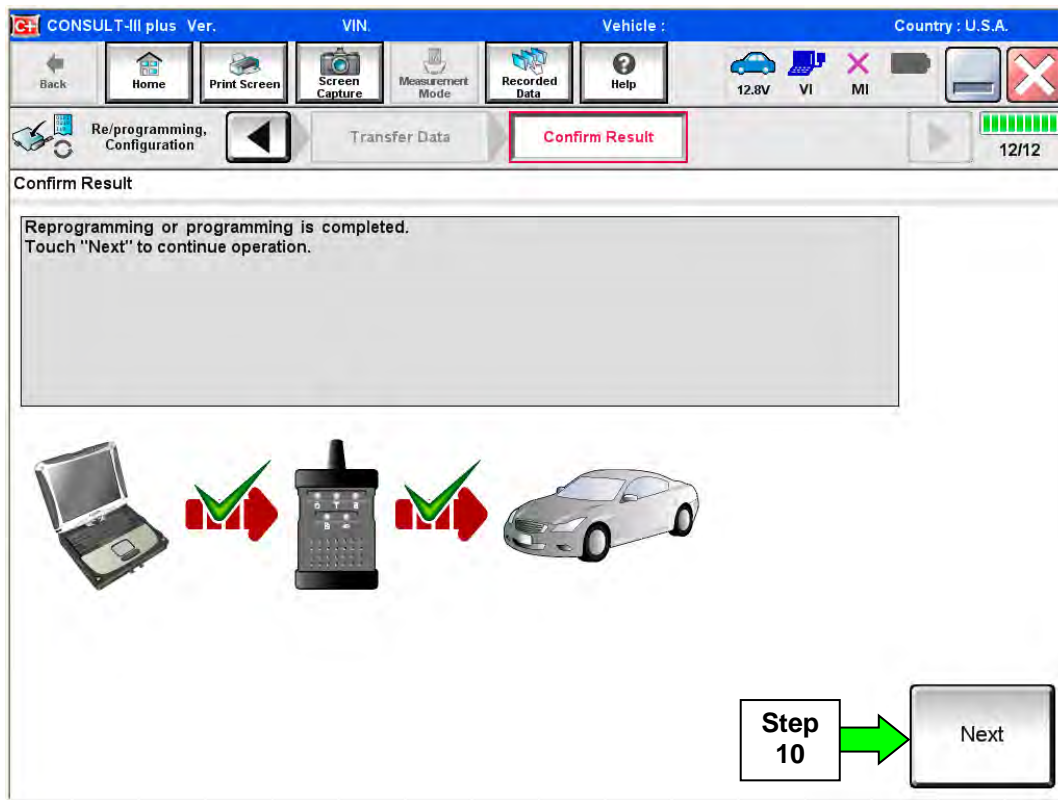


Figure 5

**NOTES:**

- In the next steps (page 10), you will perform Throttle Valve Closed Position, Idle Air Volume Learn, Accelerator Closed Position, and DTC erase.
- These operations are required before C-III plus will provide the final reprogramming confirmation report.



## ECM recovery:

**Do not disconnect plus VI or shut down C-III plus if reprogramming does not complete.**

**If reprogramming does not complete and the “!” icon displays as shown in Figure 6:**

- Check battery voltage (12.0 - 15.5 V).
- Ignition is ON, engine OFF.
- External Bluetooth® devices are OFF.
- All electrical loads are OFF.
- **Select retry and follow the on screen instructions.**
- “Retry” may not go through on first attempt and can be selected more than once.

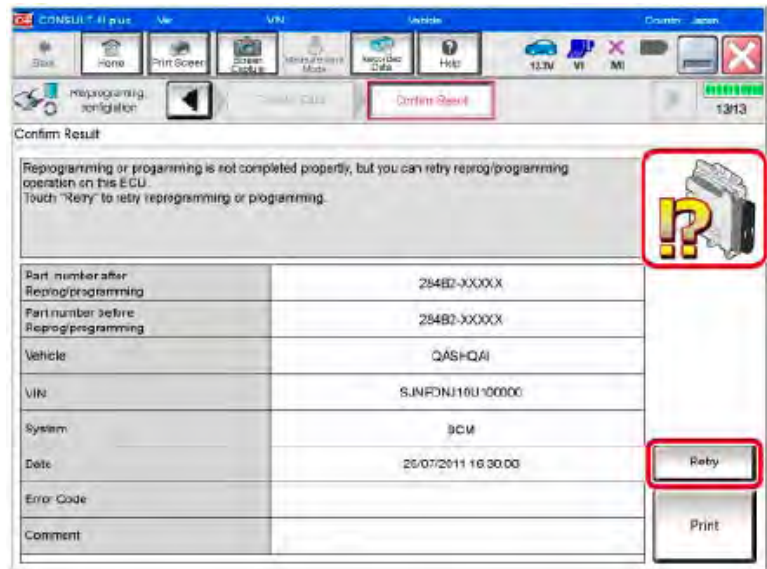


Figure 6

**If reprogramming does not complete and the “X” icon displays as shown in Figure 7:**

- Check battery voltage (12.0 - 15.5 V).
- CONSULT A/C adapter is plugged in.
- Ignition is ON, engine OFF.
- Transmission is in Park.
- All C-III plus / VI cables are securely connected.
- All C-III plus updates are installed.
- **Select Home, and restart the reprogram procedure from the beginning.**

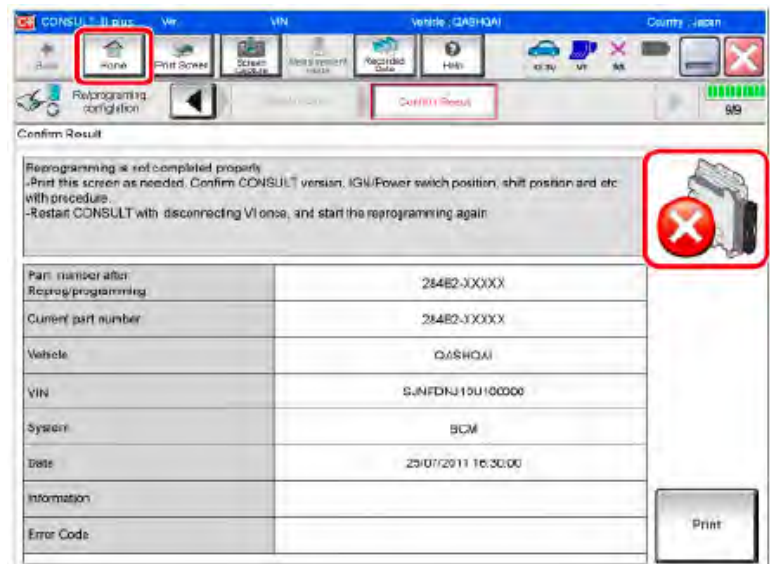


Figure 7

11. Follow the on-screen instructions to perform the following:

- **Throttle Valve Closed Position**
- **Idle Air Volume Learn (IAVL)**

**NOTE:**

- **Listed below are common required conditions for IAVL to complete.**
- **If IAVL does not complete within a few minutes, a condition may be out of range. Refer to the appropriate Electronic Service Manual (ESM) for specific conditions required for the vehicle you are working on.**
  - Engine coolant temperature: 70 -100° C (158 -212°F)
  - Battery voltage: More than 12.9V (At idle)
  - Selector lever: P or N
  - Electric load switch: OFF (Air conditioner, headlamp, rear window defogger)
  - Steering wheel: Neutral (Straight-ahead position)
  - Vehicle speed: Stopped
  - Transmission: Warmed up (ATF TEMP SE less than 0.9V)

- **Accelerator Pedal Close Position Learning**
- **Erase DTCs**

Continue to the next page.

- 12. When the entire reprogramming process is complete, the screen in Figure 8 will display.
- 13. Verify the before and after part numbers are different.
- 14. Print a copy of this screen (Figure 8) and attach it to the repair order for warranty documentation.
- 15. Select **Confirm**.

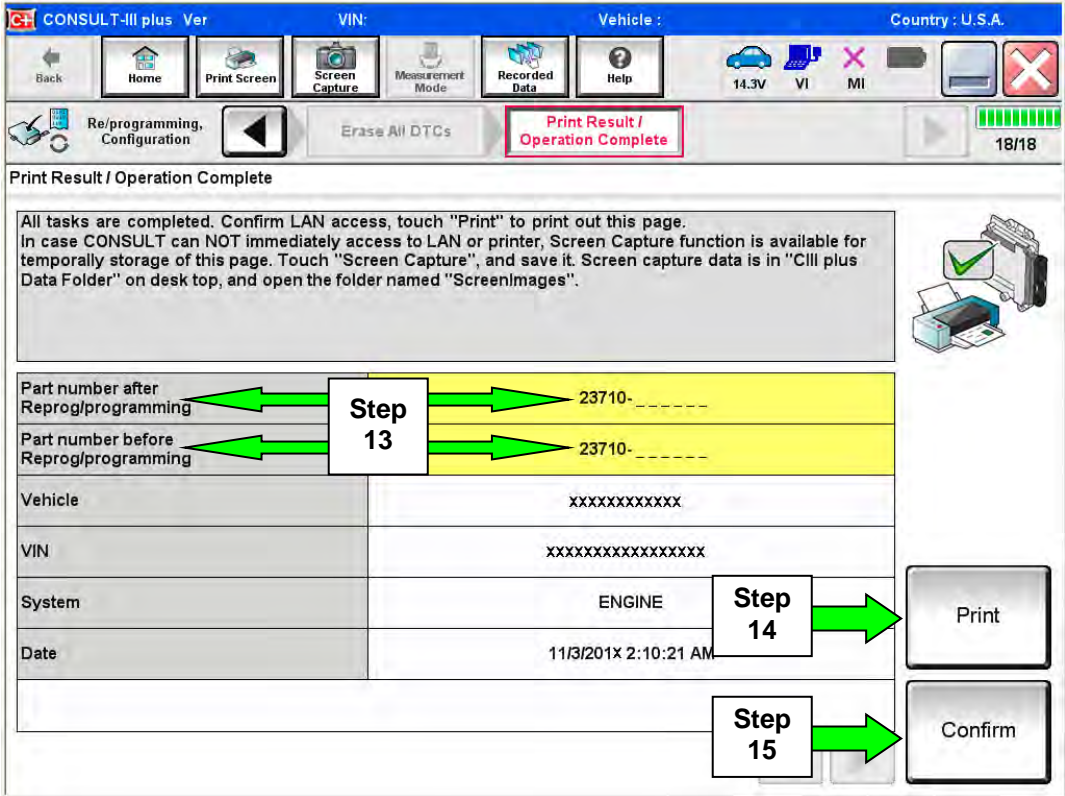


Figure 8

- 16. Close C-III plus.
- 17. Turn the ignition OFF.
- 18. Disconnect the plus VI from the vehicle.

**CLAIMS INFORMATION**

**Submit a Primary Part (PP) type line claim using the following claims coding:**

<b>DESCRIPTION</b>	<b>PFP</b>	<b>OP CODE</b>	<b>SYM</b>	<b>DIA</b>	<b>FRT</b>
Reprogram Engine Control Module	(1)	DE97AA	ZE	32	(2)

(1) Refer to the electronic parts catalog (FAST or equivalent) and use the ECM part number as the Primary Failed Part (PFP).

(2) Reference the current Nissan Warranty Flat Rate Manual and use the indicated FRT.

