	GROUP <b>Emissions Recall Campaign</b>	MODEL <b>2014-2016MY Forte (YD) 1.8L SULEV</b>
	NUMBER <b>SC150 (Rev 1, 1/22/2018)</b>	DATE <b>January 2018</b>
<b>VOLUNTARY EMISSIONS RECALL CAMPAIGN</b>		
SUBJECT: <b>ECU UPGRADE - FUEL VOLUME CONTROL LOGIC IMPROVEMENT (SC150)</b>		

**\* NOTICE**

**This bulletin has been revised to include additional information. New/revised sections of this bulletin are indicated by a black bar in the margin area.**

This bulletin provides information related to updating the software programming (calibration) of the Engine Control Unit (ECU) on some 2014-2016MY Forte (YD) vehicles, equipped with the 1.8L Nu MPI SULEV engine and produced from January 31, 2013 through March 23, 2016. These vehicles may exhibit an issue with carbon monoxide control that could cause the vehicle to release air pollutants which exceed California Air Resources Board (CARB) emissions standards. To correct this condition, Kia is requesting the completion of this Voluntary Emissions Recall Campaign on all affected vehicles. Before conducting the procedure, verify the vehicle is included in the list of affected VINs. For confirmation that the latest reflash has been applied to the vehicle you are servicing, verify the ROM ID using the table on page 2 of this bulletin.



Kia Diagnostic System (KDS)

**\* NOTICE**

**To assure complete customer satisfaction, always remember to refer to WebDCS Warranty Coverage (validation) Inquiry Screen (Service → Warranty Coverage → Warranty Coverage Inquiry) for a list of any additional campaigns that may need to be performed on the vehicle before returning it to the customer.**

**File Under: <Voluntary Emissions Recall Campaign>**

- Circulate To:**     General Manager     Service Manager     Parts Manager  
 Service Advisors     Technicians     Body Shop Manager     Fleet Repair

SUBJECT:

## ECU UPGRADE - FUEL VOLUME CONTROL LOGIC IMPROVEMENT (SC150)

### ECU Upgrade Procedure:

To correct this condition, the ECU should be reprogrammed using the KDS ECU Upgrade function, as described in this bulletin.


#### Upgrade Event Name

342.YD 1.8MPI FUEL VOLUME CONTROL LOGIC IMPROVEMENT

### \* NOTICE

- A fully charged battery is necessary before ECU upgrade can take place. It is recommended that the Midtronics GR8-1299 system be used in ECU mode during charging. **DO NOT** connect any other battery charger to the vehicle during ECU upgrade.
- All ECU upgrades must be done with the ignition key in the 'ON' position.
- Be careful not to disconnect the VCI-II connected to the vehicle during the ECU upgrade procedure.
- **DO NOT** start the engine during ECU upgrade.
- **DO NOT** turn the ignition key 'OFF' or interrupt the power supply during ECU upgrade.
- When the ECU upgrade is completed, turn the ignition 'OFF' and wait 10 seconds before starting the engine.
- **ONLY** use approved ECU upgrade software designated for the correct model, year.

### \* NOTICE

Before attempting an ECU upgrade on any Kia model, make sure to first determine whether the particular model is equipped with an immobilizer security system. Failure to follow proper procedures may cause the PCM to become inoperative after the upgrade and any claims associated with this repair may be subject to chargeback. 

### ROM ID INFORMATION TABLE:

#### Upgrade Event 342 (YD)

Model	EM	TM	IMMO	ECU P/No.	ROM ID	
					Previous	New
14MY Forte (YD)	1.8L MPI SULEV	6AT	No	39103-2EXA0	YD4SP1NS2E3A YD4SP1NS2E3B YD4SP1NS2E3C YD4SP1NS2E3D YD4SP1NF2H3A YD4SP1NF2H3B	YD4SP1NF2H3C
				39103-2EXJ0	YD4SP1JS2E3A YD4SP1JS2E3B YP4SP1JS2E3C YP4SP1JS2E3D YD4SP1JF2H3A YD4SP1JF2H3B	YD4SP1JF2H3C
39103-2EXA1 39103-2EXA5				YD5SP1NS2G3A YD5SP1NS2H3A YD5SP1NS2H3B	YD5SP1NF2H3B	
39103-2EXA2				YD6SP1NS2H3A	YD6SP1NF2H3A	
15MY Forte (YD)						
16MY Forte (YD)						

**To verify the vehicle is affected, be sure to check the Calibration Identification of the vehicle's ECM ROM ID and reference the Information Table as necessary.**

SUBJECT:

ECU UPGRADE - FUEL VOLUME CONTROL LOGIC IMPROVEMENT (SC150)

**\* NOTICE**

Prior to performing the ECU upgrade, be sure to check that the KDS is fully charged.

1. Connect the VCI-II to the OBD-II connector, located under the driver's side of the instrument panel.

**\* NOTICE**

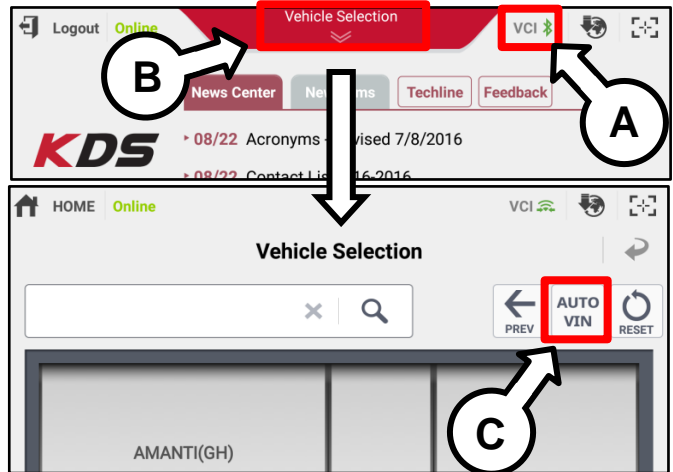
The ECU upgrade function on KDS is operating wirelessly. It is not necessary to perform the upgrade via USB cable.



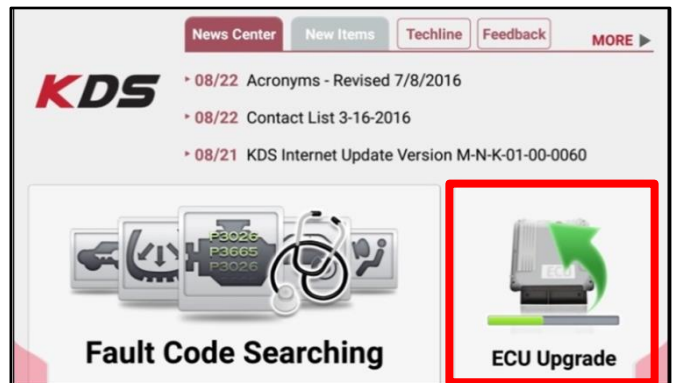
2. With the ignition ON, turn ON the KDS tablet. Select **KDS** from the home screen.



3. Confirm communication with VCI (A) and then configure the vehicle (B) using the **AUTO VIN** (C) feature.



4. Select **ECU Upgrade**.



SUBJECT: ECU UPGRADE - FUEL VOLUME CONTROL LOGIC IMPROVEMENT (SC150)

- The KDS will check the server for recently uploaded Events and then automatically download **Upgrade Event #342**.

**\* NOTICE**  
 The vehicle must be identified in Vehicle Selection to download an Event for that vehicle.

After the download is complete, the program will shut down to install. Please wait until the program restarts.

Event	Status
271.QF 2.4GDI DTC P0171,P0420 LOGIC IMPROVEMENT	Downloading
273.TF 2.4GDI DTC P0171,P0420 LOGIC IMPROVEMENT	Ready

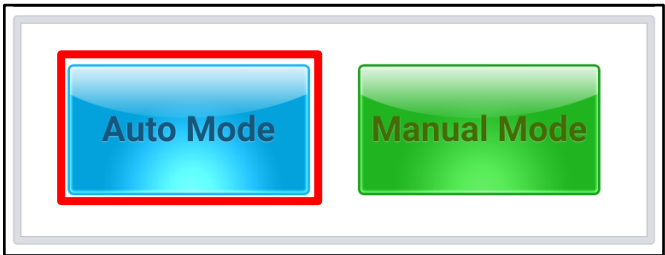
36%

Do not touch any system buttons while performing this function.

KDS screenshot shown above is for demonstration purposes only. Events shown in screenshot are not applicable to this bulletin.

- Select **Auto Mode**.

**\* NOTICE**  
 Do NOT attempt to perform a Manual Mode upgrade UNLESS Auto Mode fails. Always follow the instructions given on the KDS in either Auto or Manual mode.



- Select the **Engine** system under the System selection menu.

Touch **ID Check** (D) and confirm that the latest update is available.

Select **Upgrade Event #342** and select **Upgrade** to continue.

- The ECU upgrade will begin and the progress of the upgrade will appear on the bar graph. Upgrade part (1/2) (E) will download the upgrade event to the VCI-II. Upgrade part (2/2) (F) will upgrade the ECU.

**\* NOTICE**  
 Do not touch the system buttons (like 'Back', 'Home', 'etc.')

**E**

23%

ECU Upgrading...(1/2)

ECU is in the process of being upgraded. Please wait a few minute.

**F**

6%

ECU Upgrading...(2/2)

ECU is in the process of being upgraded. Please wait a few minute.

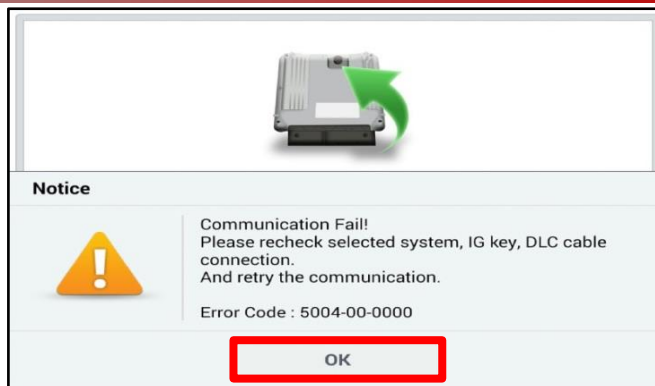
SUBJECT:

## ECU UPGRADE - FUEL VOLUME CONTROL LOGIC IMPROVEMENT (SC150)

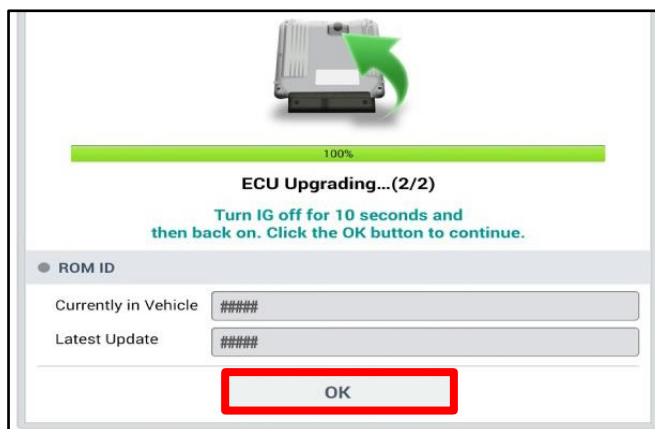
9. If a “Communication Fail” screen appears, verify that the VCI-II and KDS are communicating properly. Touch **OK** and restart the procedure from step 4.

### \* NOTICE

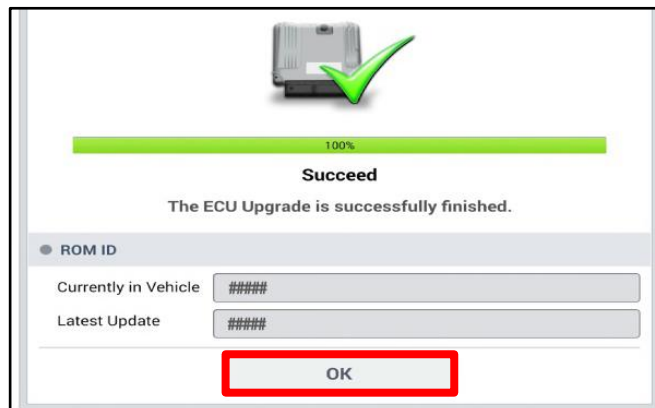
If an error notice continues to appear or if the upgrade cannot be performed, contact Techline or GIT America Help Desk.



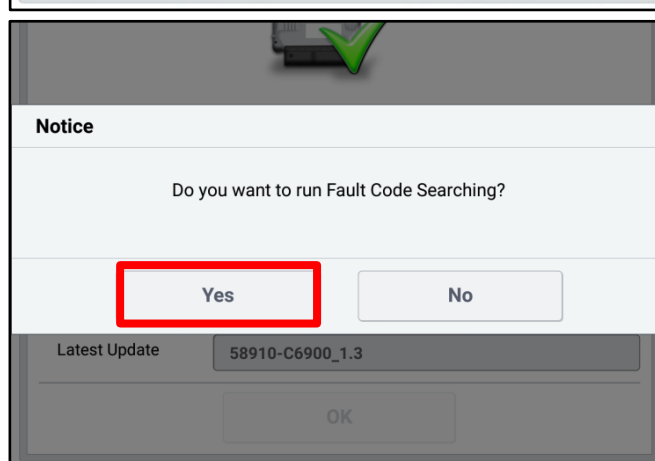
10. When instructed on the KDS, turn the ignition **OFF** for ten (10) seconds then back on. Touch **OK** to continue.



11. Once the upgrade is complete, touch **OK** to finalize the procedure.



12. When prompted, select **YES** to check for Diagnostic Trouble Codes (DTC) and erase any DTCs stored such as EPS, ESC, and TPMS that may have been set during the upgrade.



13. Start the engine to confirm proper operation of the vehicle.

**Manual Upgrade Procedure:****\* NOTICE**

The manual upgrade should **ONLY** be performed if the automatic upgrade fails.

If the automatic upgrade fails, turn the ignition **OFF** for about 10 seconds then place it back in the **ON** position to reset the control unit **BEFORE** performing manual upgrade.

See table below for Manual Mode passwords.

**Manual Mode ECU Upgrade Passwords**

Menu	Password
YD Nu 1.8MPI SULEV -IMMO : 39103-2EXA0	0320
YD Nu 1.8MPI SULEV -IMMO : 39103-2EXJ0	0321
YD Nu 1.8MPI SULEV -IMMO : 39103-2EXA1/A5	3215
YD Nu 1.8MPI SULEV -IMMO : 39103-2EXA2	0322

1. Within the ECU Upgrade screen displayed, select **Manual Mode**.
2. Select the **Engine** system under the system selection menu. Select **Upgrade Event #342** and select Upgrade to continue.
3. Select the appropriate control unit part number with reference to the ROM ID Information Table on page 2, and select **OK**.
4. Enter the appropriate password from the Manual Mode password table above and select **OK**.
5. The upgrade will begin and the progress of the upgrade will appear on the bar graph.
6. When instructed on the KDS, turn the ignition **OFF** for ten (10) seconds then back on. Touch **OK** to continue.
7. Once the upgrade is complete, touch **OK** to finalize the procedure.
8. When prompted, select **YES** to check for Diagnostic Trouble Codes (DTC) and erase any DTCs stored such as EPS, ESC, and TPMS that may have been set during the upgrade.
9. Start the engine to confirm proper operation of the vehicle.

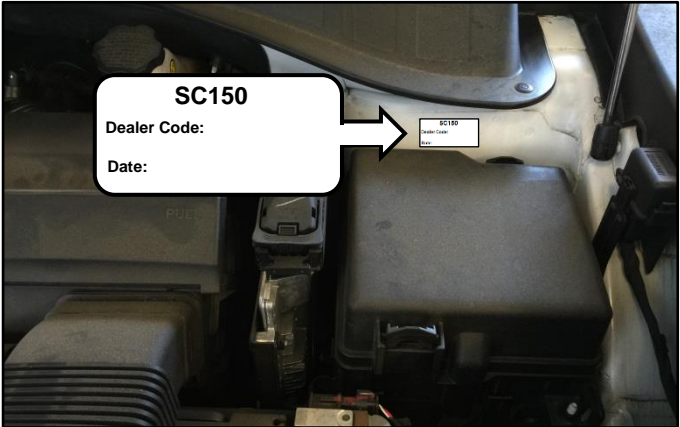


**SUBJECT: ECU UPGRADE - FUEL VOLUME CONTROL LOGIC IMPROVEMENT (SC150)**

**FILLING OUT AND APPLYING THE CAMPAIGN COMPLETION LABEL:**

The dealer must fill in the Dealer Code and Date information fields on the Campaign Completion Label. Once complete, affix the campaign completion label under the hood of the vehicle, as shown below.

Apply the SC150 Campaign Completion Label onto the body in the area next to the shock tower, as shown. **NOTE: Be sure to clean the mounting surface to ensure proper label adhesion.**



**\* NOTICE**  
 Both the Proof of Correction Card and the Campaign Completion Sticker should **ONLY** be applied to vehicles in the 13 States listed on page 8.

**REQUIRED PARTS:**

Part Name	Part Number	Figure
Campaign Completion Label	UC160 SC150	
Vehicle Emission Recall-Proof of Correction Card	UC161 SC150	



SUBJECT:

## ECU UPGRADE - FUEL VOLUME CONTROL LOGIC IMPROVEMENT (SC150)

AFFECTED VEHICLE RANGE:

Model	Production Date Range
Forte (YD)	January 31, 2013 through March 23, 2016

WARRANTY INFORMATION:

N Code: N99 C Code: C99

Claim Type	Causal P/N	Qty.	Repair Description	Labor Op Code	Op Time	Replacement P/N	Qty.
R	39103 2EXA0	0	(SC150) ECU Upgrade – Fuel Volume Control Logic Improvement	170061R0	0.3 M/H	N/A	0

**\* NOTICE**

VIN inquiry data for this repair is provided for tracking purposes only. Kia retailers should reference SC150 when accessing the WebDCS system.

**\* NOTICE**

To assure complete customer satisfaction, always remember to refer to WebDCS Warranty Coverage (validation) Inquiry Screen (Service → Warranty Coverage → Warranty Coverage Inquiry) for a list of any additional campaigns that may need to be performed on the vehicle before returning it to the customer.