	GROUP ELE	MODEL 2018MY Stinger (CK)
	NUMBER 142	DATE January 2018
<b>TECHNICAL SERVICE BULLETIN</b>		
<b>SUBJECT: SERVICE ACTION: HEADLAMP “WELCOME BLINK” OPERATION – ICU LOGIC IMPROVEMENT (SA331)</b>		

This bulletin provides the procedure to improve the logic of the Integrated Central Control Unit (ICU) on some 2018MY Stinger (CK) vehicles, produced from September 21, 2017 through December 15, 2017, which in very rare circumstances may experience inoperative “welcome blink” of the headlamps. To correct this concern, apply the improved logic to the ICU using the KDS ECU Upgrade function as described in this bulletin. For confirmation that the latest reflash has been applied to a vehicle you are working on, verify the ROM ID using the table on page 2 of this bulletin. Before conducting the procedure, verify that the vehicle is included in the list of affected VINs.



**\* NOTICE**

A Service Action is a repair program without customer notification that is performed during the warranty period. Any dealer requesting to perform this repair outside the warranty period will require DPSM approval.

Repair status for a VIN is provided on WebDCS (Service → Warranty Coverage → Warranty Coverage Inquiry → Campaign Information). Not completed Recall / Service Action reports are available on WebDCS (Consumer Affairs → Not Completed Recall → Recall VIN → Select Report), which includes a list of affected vehicles.

This issue number is SA331.

File Under: <Electrical>

- Circulate To:     General Manager     Service Manager     Parts Manager  
 Service Advisors     Technicians     Body Shop Manager     Fleet Repair

**SUBJECT: SERVICE ACTION: HEADLAMP "WELCOME BLINK" OPERATION  
ICU LOGIC IMPROVEMENT (SA331)**

**ICU Upgrade Procedure:**

To correct this condition, the ECU should be reprogrammed using the KDS download, as described in this bulletin.

**Upgrade Event Name**

364.CK ICU Headlamp Operation Logic Improvement (Welcome Blink)

**\* NOTICE**

- A fully charged battery is necessary before ECU upgrade can take place. It is recommended that the Midtronics GR8-1299 system be used in ECU mode during charging. **DO NOT** connect any other battery charger to the vehicle during ECU upgrade.
- All ECU upgrades must be done with the ignition key in the 'ON' position.
- Be careful not to disconnect the VCI-II connected to the vehicle during the ECU upgrade procedure.
- **DO NOT** start the engine during ECU upgrade.
- **DO NOT** turn the ignition key 'OFF' or interrupt the power supply during ECU upgrade.
- When the ECU upgrade is completed, turn the ignition 'OFF' and wait 10 seconds before starting the engine.
- **ONLY** use approved ECU upgrade software designated for the correct model, year.

**\* NOTICE**

Before attempting an ECU upgrade on any Kia model, make sure to first determine whether the particular model is equipped with an immobilizer security system. Failure to follow proper procedures may cause the PCM to become inoperative after the upgrade and any claims associated with this repair may be subject to chargeback. 🚗

**ROM ID INFORMATION TABLE:**

Upgrade Event #364

Model	ENG	TM	IMMO	ECU P/No.	ROM ID	
					Previous	New
CK	All	All	All	91951 J5240 91951 J5280	1.05	1.08
					1.06	
					1.07	

*To verify the vehicle is affected, be sure to check the Calibration Identification of the vehicle's ECM ROM ID and reference the Information Table as necessary.*

**SUBJECT: SERVICE ACTION: HEADLAMP "WELCOME BLINK" OPERATION  
ICU LOGIC IMPROVEMENT (SA331)**

**\* NOTICE**

**Prior to performing the ECU upgrade, be sure to check that the KDS is fully charged.**

1. Connect the VCI-II to the OBD-II connector, located under the driver's side of the instrument panel.

**\* NOTICE**

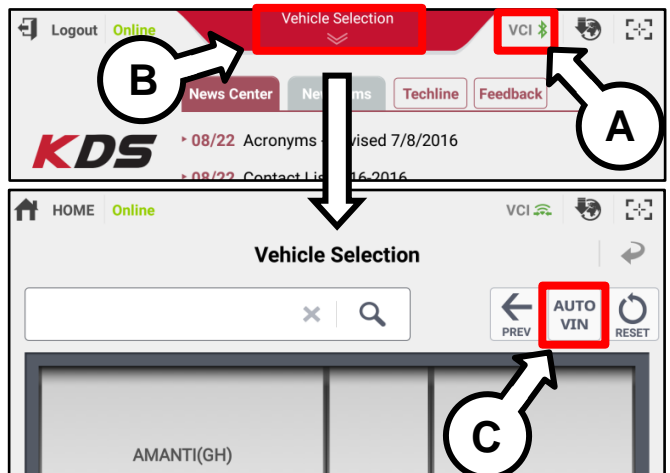
**The ECU upgrade function on KDS operates wirelessly. It is not necessary to perform the upgrade via USB cable.**



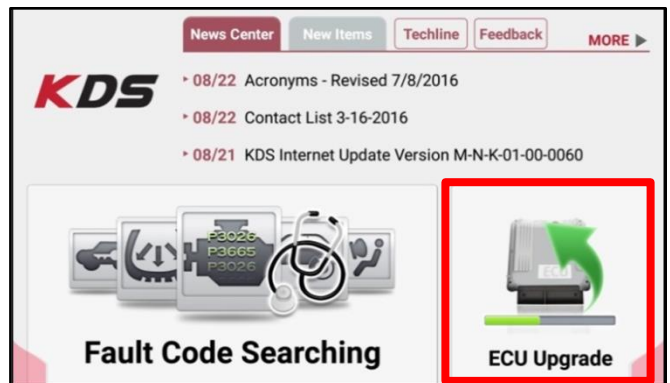
2. With the ignition ON, turn ON the KDS tablet. Select **KDS** from the home screen.



3. Confirm communication with VCI (A) and then configure the vehicle (B) using the **AUTO VIN** (C) feature.



4. Select **ECU Upgrade**.



**SUBJECT: SERVICE ACTION: HEADLAMP "WELCOME BLINK" OPERATION  
ICU LOGIC IMPROVEMENT (SA331)**

- The KDS will check the server for recently uploaded Events and then automatically download **Upgrade Event #364**.

**\* NOTICE**

The vehicle must be identified in Vehicle Selection to download an Event for that vehicle.

After the download is complete, the program will shut down to install.  
Please wait until the program restarts.

Event	Status
271.QF 2.4GDI DTC P0171,P0420 LOGIC IMPROVEMENT	Downloading
273.TF 2.4GDI DTC P0171,P0420 LOGIC IMPROVEMENT	Ready

36%

! Do not touch any system buttons while performing this function.

KDS screenshot shown above is for demonstration purposes only. Events shown in screenshot are not applicable to this bulletin.

- Select **Auto Mode**.

**CAUTION**

Do NOT attempt to perform a Manual Mode upgrade UNLESS Auto Mode fails. Always follow the instructions given on the KDS in either Auto or Manual mode.



- Select the **ICU** System under the System selection menu.

Touch **ID Check** (D) and confirm that the latest update is available.

Select **Upgrade Event #364** and select **Upgrade** to continue.

- The ECU upgrade will begin and the progress of the upgrade will appear on the bar graph. Upgrade part (1/2) (E) will download the upgrade event to the VCI-II. Upgrade part (2/2) (F) will upgrade the ECU.

**CAUTION**

Do not touch the system buttons (like 'Back', 'Home', 'etc.') while performing ECU Upgrade.

E

**ECU Upgrading...(1/2)**

ECU is in the process of being upgraded.  
Please wait a few minute.

F

**ECU Upgrading...(2/2)**

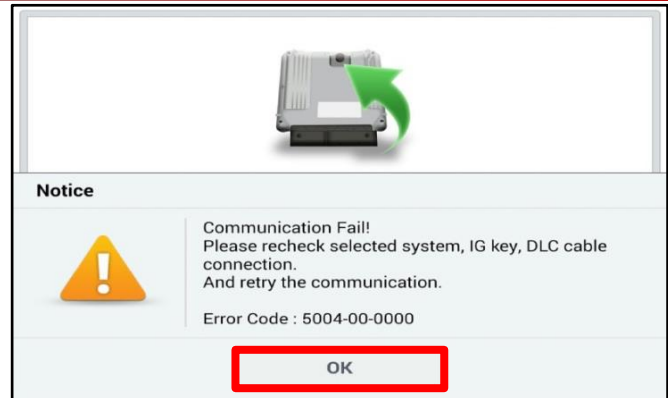
ECU is in the process of being upgraded.  
Please wait a few minute.

**SUBJECT: SERVICE ACTION: HEADLAMP "WELCOME BLINK" OPERATION  
ICU LOGIC IMPROVEMENT (SA331)**

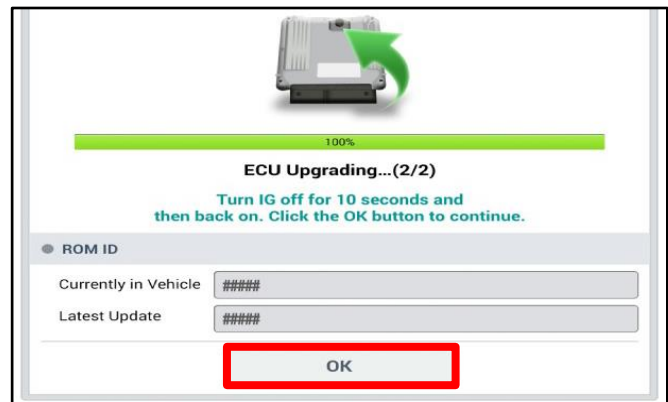
9. If a "Communication Fail" screen appears, verify that the VCI-II and KDS are communicating properly. Touch **OK** and restart the procedure from step 4.

**\* NOTICE**

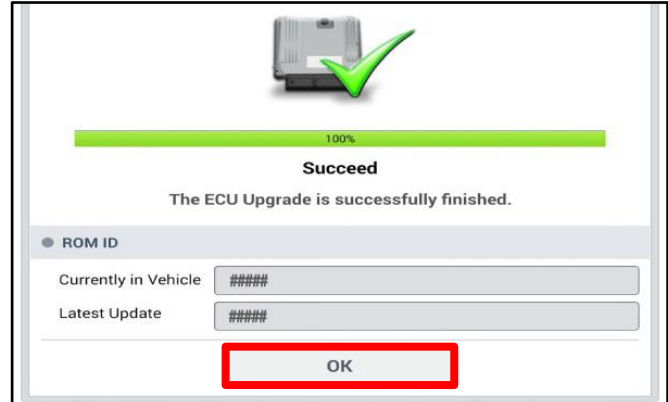
**If an error notice continues to appear or if the upgrade cannot be performed, contact Techline or GIT America Help Desk.**



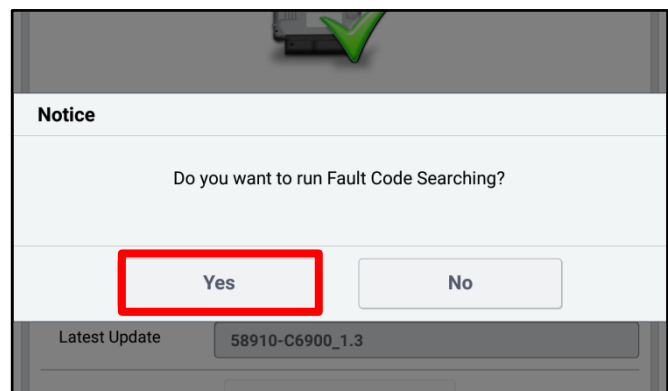
10. When instructed on the KDS, turn the ignition **OFF** for ten (10) seconds then back on. Touch **OK** to continue.



11. Once the upgrade is complete, touch **OK** to finalize the procedure.



12. When prompted, select **YES** to check for Diagnostic Trouble Codes (DTC) and ensure to erase any DTCs in any control modules after fault code searching.



13. Start the engine to confirm proper operation of the vehicle.

**SUBJECT: SERVICE ACTION: HEADLAMP "WELCOME BLINK" OPERATION  
ICU LOGIC IMPROVEMENT (SA331)**

**Manual Upgrade Procedure:**

**\* NOTICE**

The manual upgrade should **ONLY** be performed if the automatic upgrade fails.

If the automatic upgrade fails, turn the ignition **OFF** for about 10 seconds then place it back in the **ON** position to reset the control unit **BEFORE** performing manual upgrade.

See table below for Manual Mode passwords.

**Manual Mode ECU Upgrade Passwords**

Menu	Password
CK 18MY ICU : 91951 J5240	5280
CK 18MY ICU : 91951 J5280	

1. Within the ECU Upgrade screen displayed, select **Manual Mode**.
2. Select the ICU under the System selection menu. Select **Upgrade Event #364** and select **Upgrade** to continue.
3. Select the appropriate control unit part number with reference to the ROM ID Information Table on page 2, and select **OK**.
4. Enter the appropriate password from the Manual Mode password table above and select **OK**.
5. The upgrade will begin and the progress of the upgrade will appear on the bar graph.
6. When instructed on the KDS, turn the ignition **OFF** for ten (10) seconds then back on. Touch **OK** to continue.
7. Once the upgrade is complete, touch **OK** to finalize the procedure.
8. When prompted, select **YES** to check for Diagnostic Trouble Codes (DTC) and erase any DTCs stored such as EPS, ESC, and TPMS that may have been set during the upgrade.
9. Start the engine to confirm proper operation of the vehicle.



**SUBJECT: SERVICE ACTION: HEADLAMP "WELCOME BLINK" OPERATION  
ICU LOGIC IMPROVEMENT (SA331)**

**AFFECTED VEHICLE RANGE:**

Model	Production Date Range
Stinger (CK)	September 21, 2017 through December 15, 2017

**WARRANTY INFORMATION:**

**N Code: N99 C Code: C99**

Claim Type	Causal P/N	Qty.	Repair Description	Labor Op Code	Op Time	Replacement P/N	Qty.
V	91951 J5240	0	(SA331) Headlamp "Welcome Blink" Operation - ICU Logic Improvement	170134R0	0.3	N/A	0

**\* NOTICE**

VIN inquiry data for this repair is provided for tracking purposes only. Kia retailers should reference SA331 when accessing the WebDCS system.