

March 1, 2017

05022 Version 2

Ticking from the Dashboard or Front Damper

Supersedes 13-039, dated October 23, 2013, see REVISION SUMMARY.

AFFECTED VEHICLES

Year	Model	Trim	VIN range
2014–15	MDX	ALL	ALL

REVISION SUMMARY

This bulletin has been completely revised. American Honda recommends that you read the entire bulletin.

SYMPTOM

There is a ticking coming from the dashboard or the front damper area.

POSSIBLE CAUSE

Paint from the front damper mount is sticking to the vehicle body, causing a ticking when the body flexes.

CORRECTIVE ACTION

Install the front damper mount stiffeners and updated mounting nuts.

PARTS INFORMATION

Part Name	Part Number	Quantity
Stiffener Set (includes left and right)	06510-TZ5-A00	1
Nut	90310-TK5-A00	6

WARRANTY CLAIM INFORMATION

The normal warranty applies.

Operation Number	Description	Flat Rate Time	Defect Code	Symptom Code	Template ID	Failed Part Number
4141E0	Install the front damper mount stiffeners.	0.5 hr	03001	04201	13-039N	06510-TZ5-A00

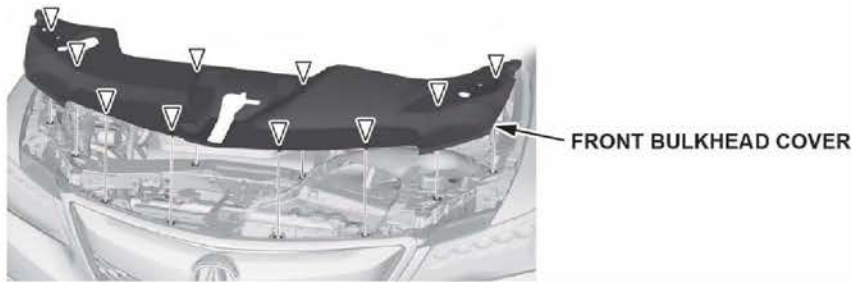
Skill Level: Repair Technician

CLIENT INFORMATION: The information in this bulletin is intended for use only by skilled technicians who have the proper tools, equipment, and training to correctly and safely maintain your vehicle. These procedures should not be attempted by "do-it-yourselfers," and you should not assume this bulletin applies to your vehicle, or that your vehicle has the condition described. To determine whether this information applies, contact an authorized Acura automobile dealer.

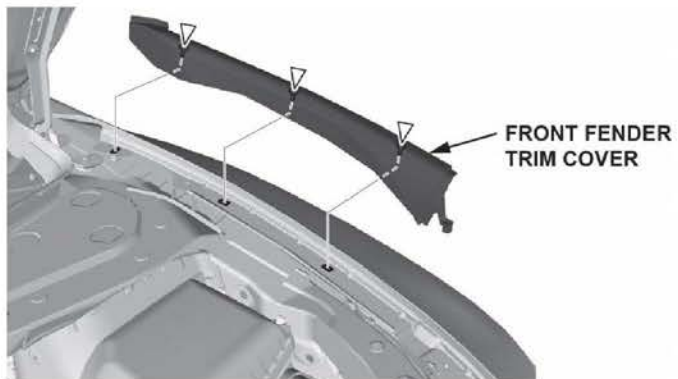
REPAIR PROCEDURE

NOTE: The following repair should be completed with the suspension loaded.

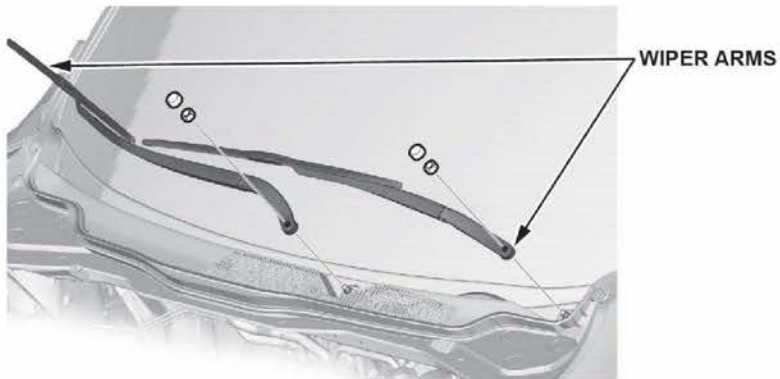
1. Remove the front bulkhead cover.



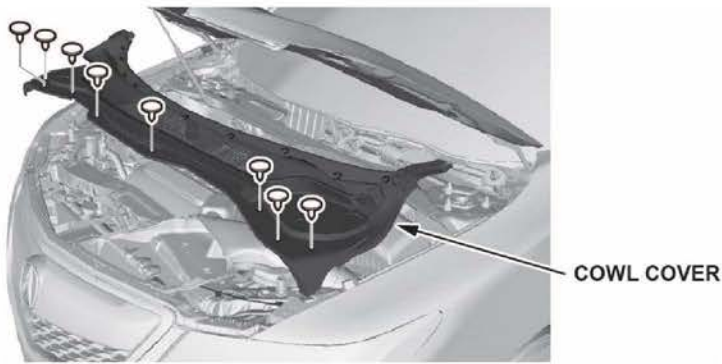
2. Remove both front fender trim covers.



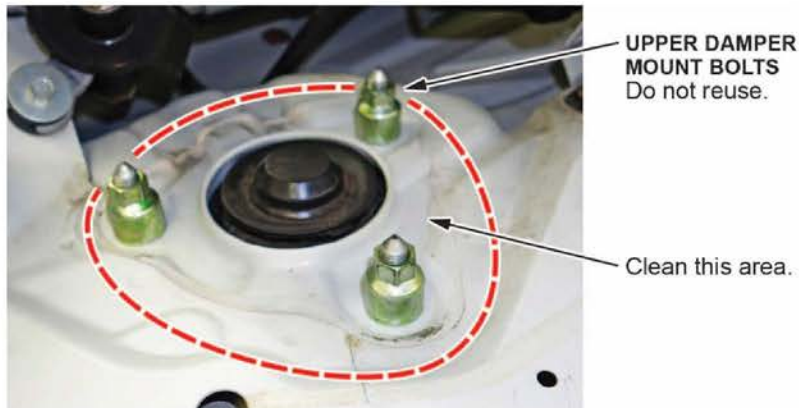
3. Remove the wiper arms.



4. Remove the cowl cover.



5. Remove the upper damper mount nuts.

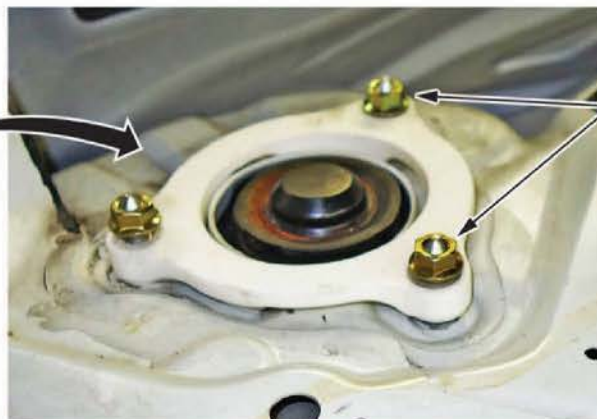


6. Clean the areas of the body where the front damper mount stiffeners will be installed. Make sure they are clear of any oil or dirt.
7. Install the front damper mount stiffeners with the flat side up as shown. The stiffeners are marked **L** for driver side and **R** for passenger side, be sure to install them in the correct locations.

NOTE: When correctly assembled, the stiffener should only touch the body with the raised areas on the bottom side of the stiffener.

FRONT DAMPER MOUNT STIFFENER

Install with the flat side up.
Stiffeners are marked Right and Left.

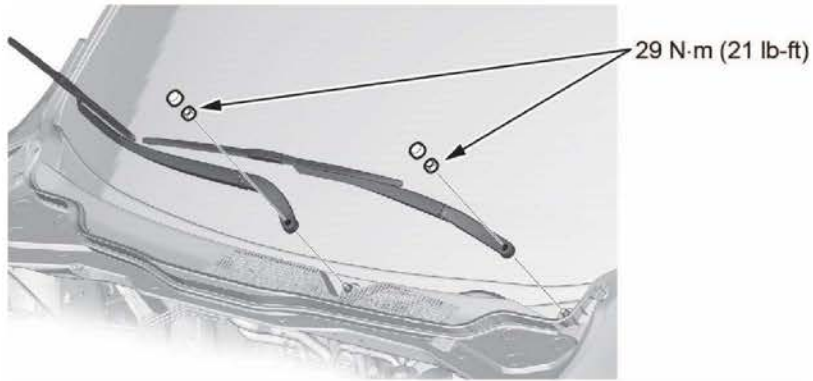


NEW NUTS (3)
Initial torque:
49 N·m (36 lb-ft)
Final torque:
94 N·m (69 lb-ft)

8. Install the new nuts, and torque them in two stages. First, tighten all three nuts to an initial torque of **49 N·m (36 lb-ft)**. Then, tighten all three nuts to a final torque of **94 N·m (69 lb-ft)**.

NOTE: **Do not** use the original nuts with the front damper mount stiffeners.

9. Reinstall the cowl cover.
10. Reinstall the wiper arms, and torque them to **29 N·m (21 lb-ft)**.



11. Reinstall the fender trim covers.
12. Reinstall the front bulkhead cover.

END