

## SERVICE ADVISORY # 16-258

### Voltage Energy Management

It has been determined the Energy Management was wired incorrectly causing the system not to shed loads on certain Epic Series units. The following procedure describes how to correct the issue.

**Models Included:** 2016 – Voltage Fifth Wheels, Models: 3200, 3305, 3605, 3805, 3818, 3895, 3970, 3990, 4150

2017 – Voltage Fifth Wheels, Models: 3305, 3605, 3805, 3815, 3890, 3895, 3970, 3975, 3990, 3995, 4100, 4105, 4150, 4155

**Serial Number Ranges:** 2016 Voltage GZ991205 – GZ991354

2017 Voltage HZ990003 – HZ990477

**Note – Check serial number on Key Express to verify the campaign is open. Some vehicles were repaired before they left Keystone.**

**Tools Required:** - #2 Square Bit - Screw Gun

### REPAIR INSTRUCTIONS

#### Step 1

Locate the trailer on a level, flat and hard surface. Chock the wheels.

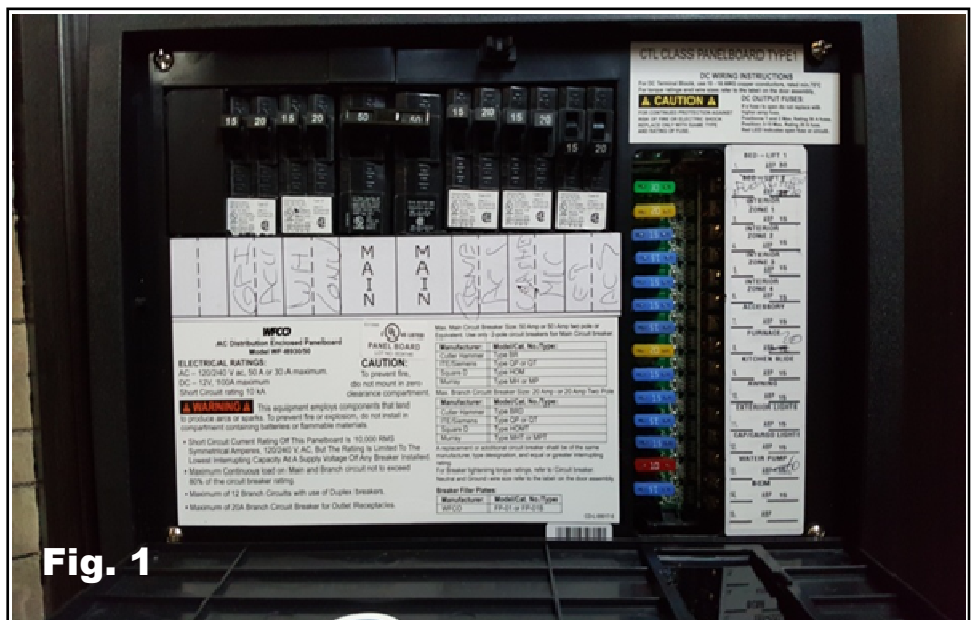
#### Step 2

Disconnect all sources of 12V and 120V electrical power including:

- Disconnect the battery.
- Unplug the shore cord and stow cord.
- Shut off the generator.

#### Step 3

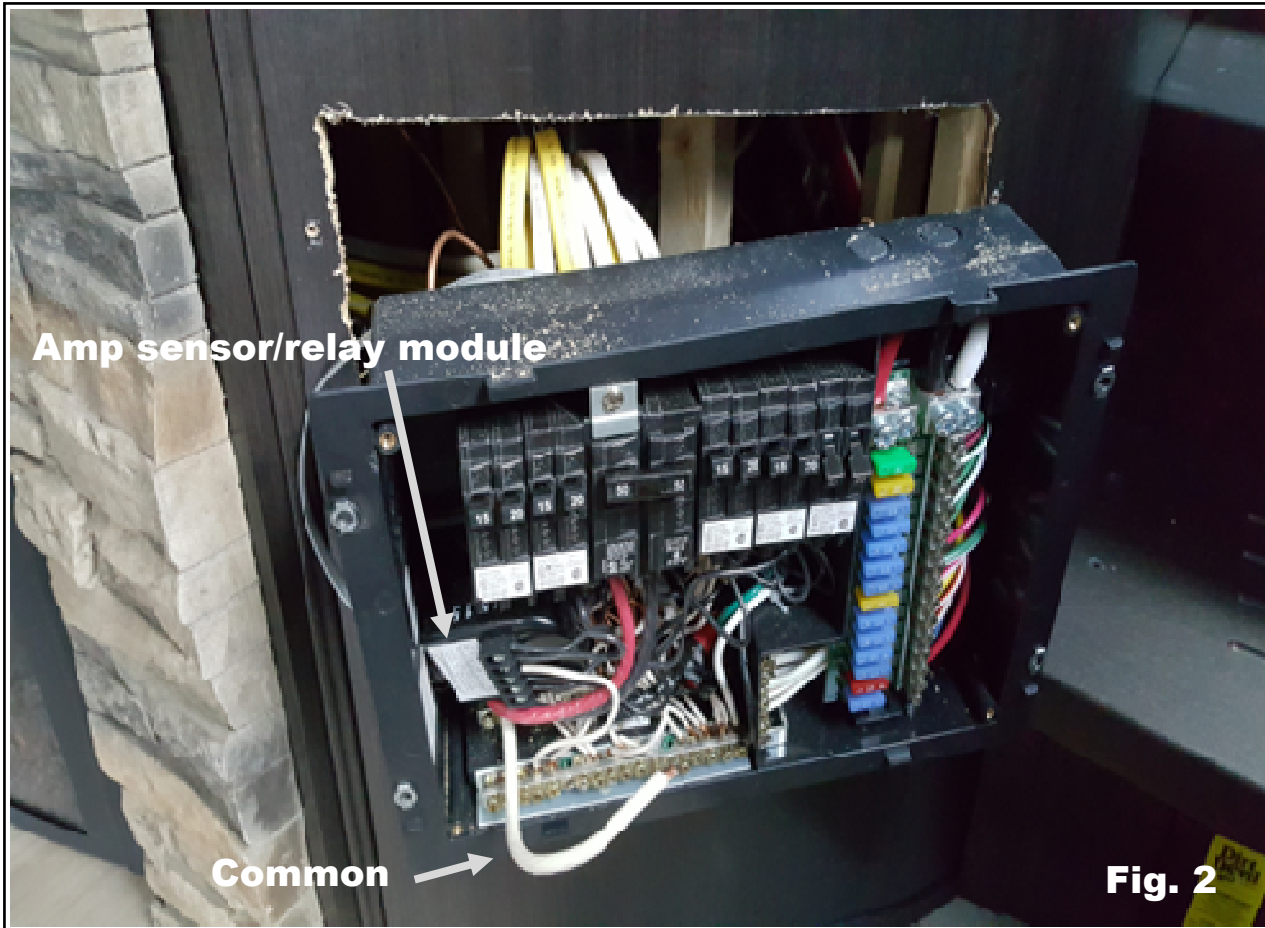
Remove the screws securing the cover on the power center, Figure. 1.



**Fig. 1**

**Step 4**

Pull power center out of the wall and locate the amp sensor/relay module and remove the main neutral common as pictured, Figures 2 & 3.

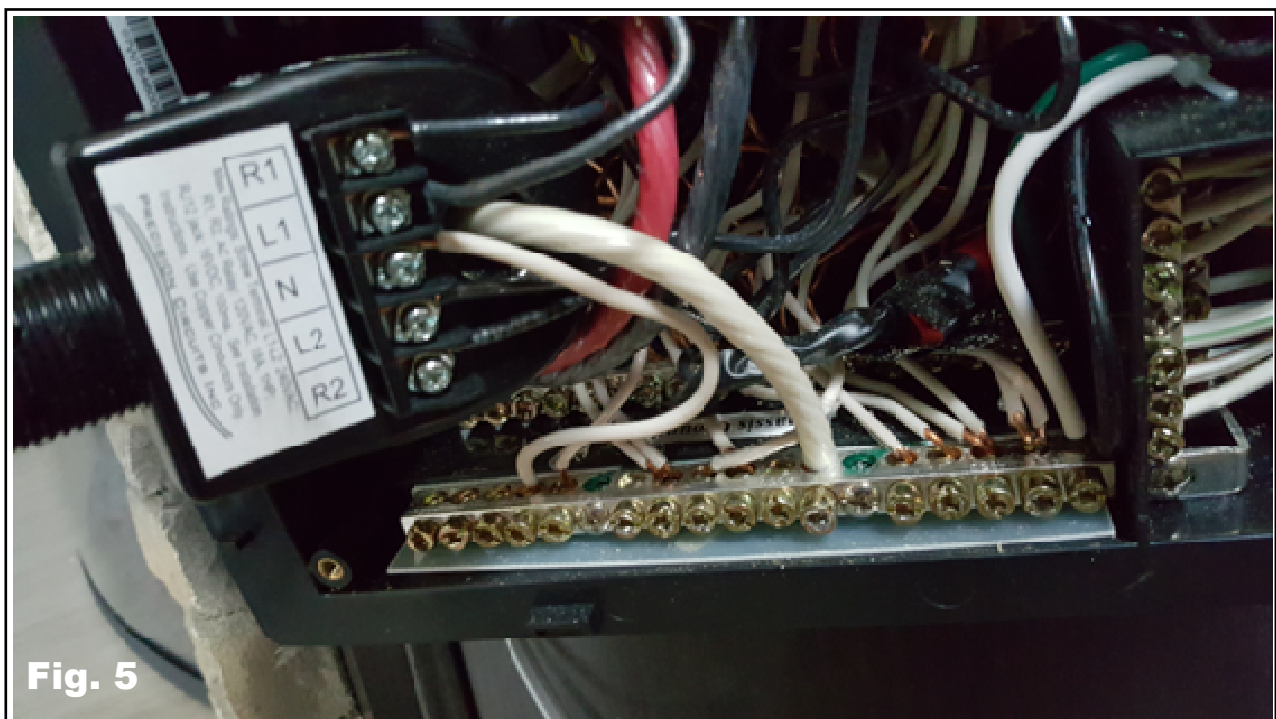


**Step 5**

Remove the communication wire and the retaining nut so that the amp sensor/relay module can be removed from the box, Figure 4.

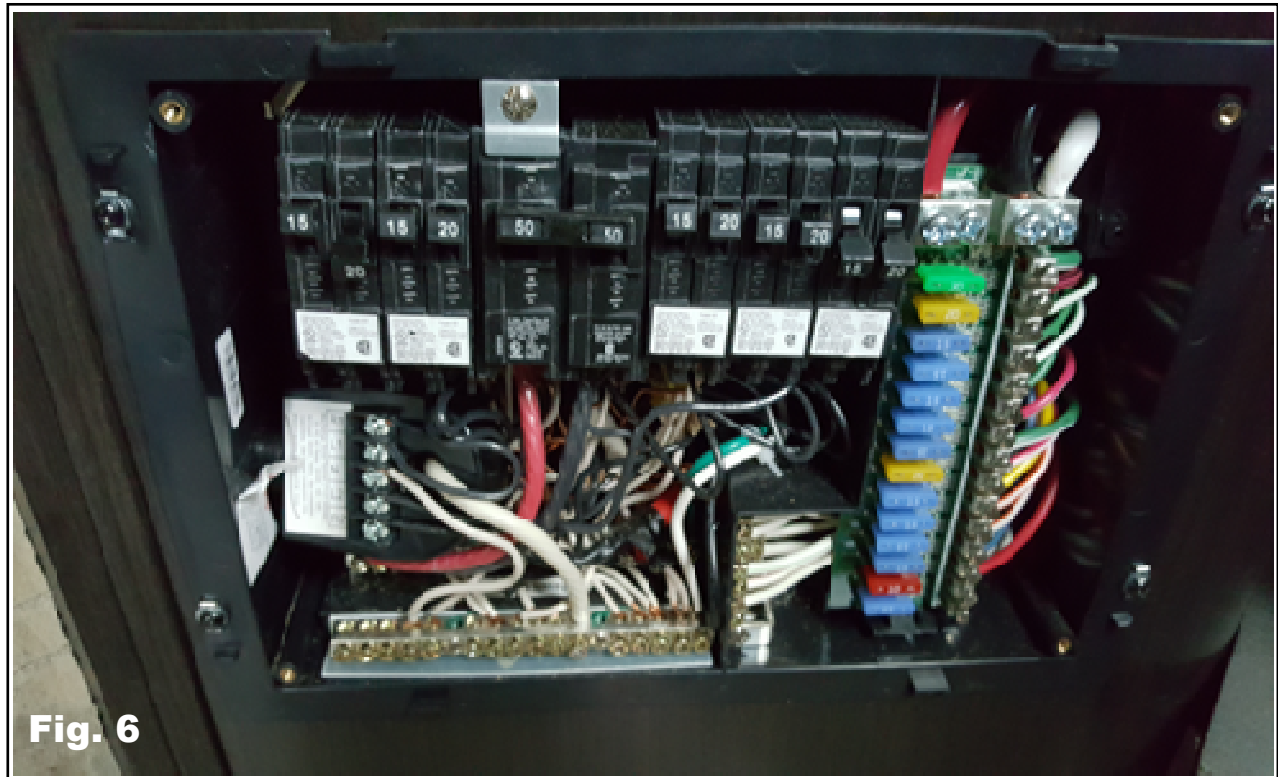
**Step 6**

Place common neutral wire through the amp sensor on the module as pictured, Figure 5.



**Step 7**

Reinstall the common neutral wire and firmly tighten set screw, Figure 6.

**Step 8**

Reinstall the amp sensor/relay module and power center.

**WARRANTY REIMBURSEMENT**

Submit the claim on Key Express using **Flat Rate Code # 7125842A** with **Service Advisory # 16-258** noted in the customer complaint section. The amount of time authorized for repair is **0.5 hour**.

If you have questions, please contact Customer Service: **(855) 382-4100**