



Technical Information Bulletin

E171



Section

Miscellaneous

Subject

2017 Emissions Retrofit - Emissions Label & Software Campaign

Release Date

1/18/2017

Condition

Expiring emissions exemptions for pre-production vehicles must be updated to production levels. This involves engine software and a new emissions label.

Chassis Affected

12 chassis built from 11/15/2016 through 12/08/2016 equipped with PACCAR MX-11 and MX-13 GHG2017 MY2017 pre-series engines. See attached chassis list.

Action

CAMPAIGN

Review the attached chassis list for your dealer code and schedule your customer(s) for service if their chassis is on the list. Service all chassis affected that enter your dealership, even if the customer has no issue with the chassis. Use the attached procedure. Review DWWC/SIR for "Complete" next to the "E171" campaign code prior to performing this repair.

NOTE: These 12 chassis are currently on dealer lots.

Warranty

There is no time or mileage limit to this campaign. Kenworth will pay for parts at dealer net plus applicable mark-up and labor:

- 0.45 hours (0.1 hours labor to install a new exemption label and submit a photo to document the installation + 0.35 download new software to ECM (SRT 045-986)). (Use Quick Claim Code E171).
- File an additional claim for extraordinary circumstances. A quick claim for standard labor must be filed first.

NOTE: Kenworth dealers may perform E171 repairs on Peterbilt chassis, but Quick Claims do not apply. For Peterbilt chassis repairs, use the long claim input form in DWWC selecting "Draft/Offline Claims," the "General" tab, and in the "Type of Claim" drop down box, select "PACCAR Engine Claim," then manually enter claim codes (Campaign #, Failure type, and SRT).

CLAIM CODING			
Failure Location:	053-005-021	Work Accomplished:	35
Failure Type:	340	Responsibility Code:	01
SRT Code:	045-986, 045-xxx	Claim Type:	F

Parts

Parts are available from PACCAR Parts. See Replacement Label [Procedure](#) under Engine Support Center Bulletins.

Quantity	Part Number	Description
1	MXENGINELABEL	EPA Label

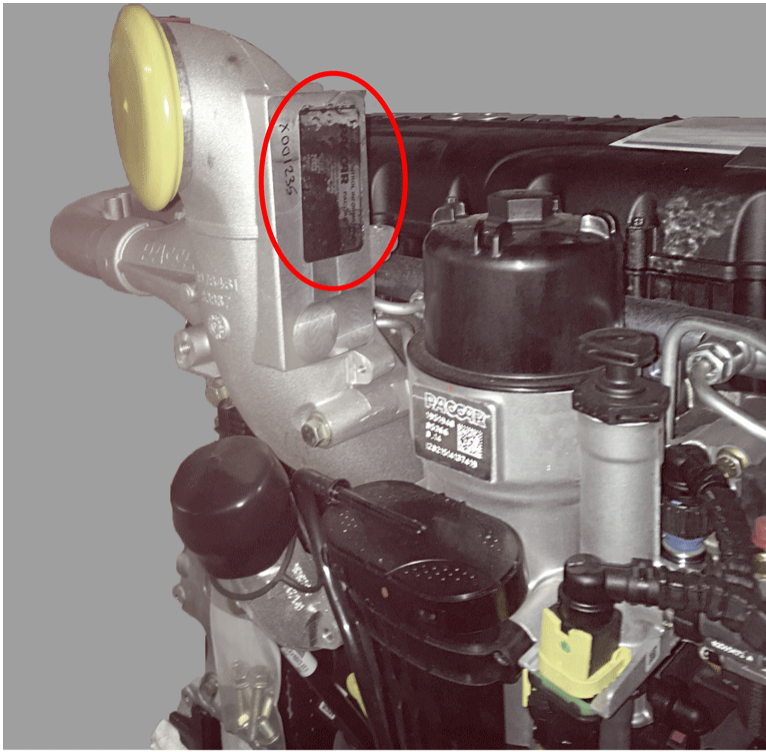
Background

The label currently on the trucks related to this campaign is an exemption label that expired on December 31, 2016.

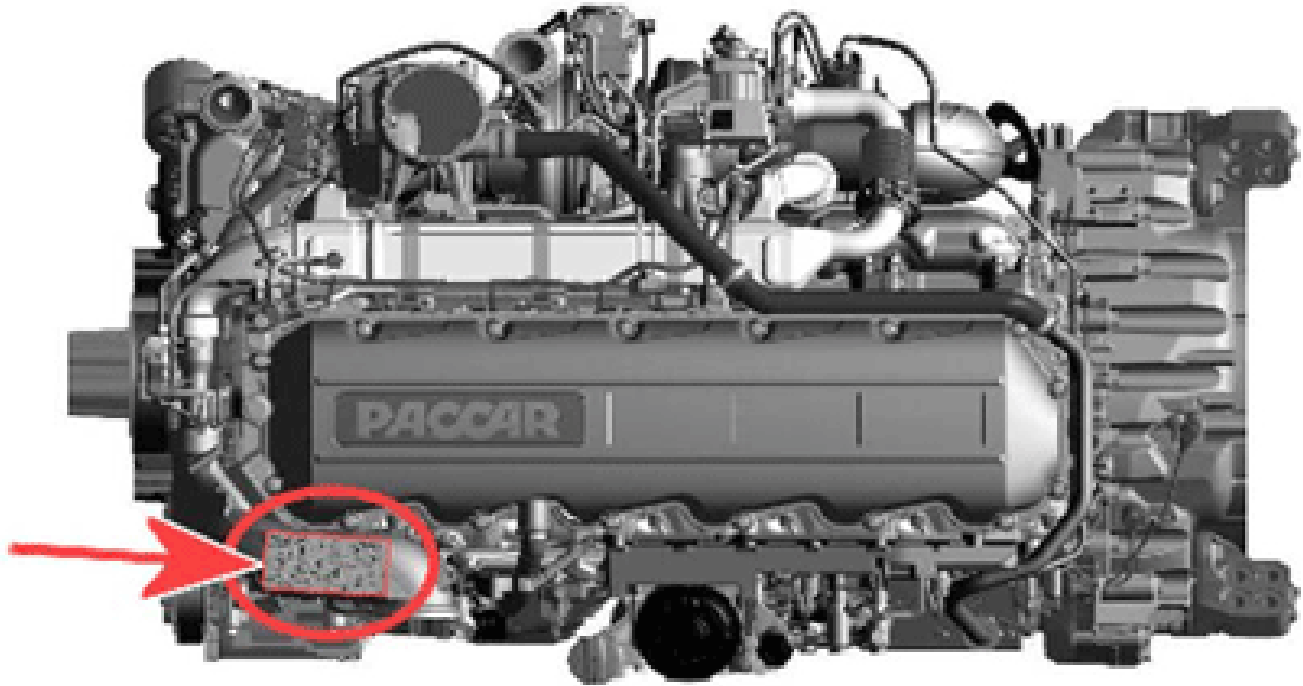
Procedure

See Software Part Number Matrix under [MX-13 GHG2017 \(2017\)](#) and [MX-11 GHG2017 \(2017\)](#).

See Replacement Label [Procedure](#) under Engine Support Center Bulletins.



MX-11



MX-13

Attachments

 [Chassis List](#)

Authored by: GH

Access to PACCAR's Enterprise Portal is provided as a benefit of doing business with PACCAR. All applications and content accessed through this system are confidential and proprietary and the property of PACCAR Inc and its suppliers, and must be kept strictly confidential pursuant to the contract licensing such access. Disclosure, publication, release or distribution of any material found on PACCAR systems to any person other than employees with a need to know such information is strictly prohibited. All activity on this system is monitored. If PACCAR suspects or discovers any unauthorized activity, access may be immediately terminated without prior notification. Violators may be subject to legal action.

© Copyright 2017 PACCAR Inc. All rights reserved. We welcome your [feedback](#) on this page. For technical questions or concerns about this page, please contact the [DealerNet Webmaster](#).