

**Intermediate Manufacture Vehicle  
Identification Label Installation for  
Certain CNG Powered Vehicles**

**Date:** February 22, 2017  
**Bulletin Name:** FSC-TSB-005  
**Model:** All vehicles with a CNG system installed by McNeilus

**Purpose:**

McNeilus Truck and Manufacturing installed a Compressed Natural Gas (CNG) system on certain vehicles as an intermediate manufacturer. The intermediate stage manufacture label for the installation of the CNG system is absent on these vehicles. Federal law 49 CFR Part 567.5 (c) requires the placement of this intermediate manufacture label on the vehicle and it must be present in case of a DOT vehicle inspection. The following bulletin describes the correct placement of the label on the vehicle and installation instructions.

**Notice:**

- This bulletin should be read and understood in its entirety before performing this inspection.
- All procedures outlined in the bulletin must be performed by skilled service personnel.

**Reimbursement of Costs:**

There will be no parts costs reimbursement given as you will not be charged for this part (the intermediate manufacture label). There will be no labor reimbursement given for completing this procedure.

**Tools and Equipment Required:**

- Glass cleaner or Isopropyl Alcohol
- Clean cloth

**Required Part (provided by McNeilus):**

Item	Description	Qty.
1	INTERMEDIATE MANUFACTURE LABEL — WITH ONE TAMPER PROOF CLEAR FILM	1

**INTERMEDIATE MANUFACTURE BY:**

**DATE OF INTERMEDIATE MFR.**  
 MO.  YR.

**GVWR:**  **KG:** ( **LB**)

**GAWR-FRONT:**  
 **KG** ( **LB**)

**GAWR-INTERMEDIATE (1):**  
 **KG** ( **LB**)

**GAWR-INTERMEDIATE (2):**  
 **KG** ( **LB**)

**GAWR-REAR:**  
 **KG** ( **LB**)

**VEHICLE IDENTIFICATION NUMBER:**

## Procedure: Label Placement on Truck and Surface Preparation

**NOTE:** The figures shown below are provided for reference only. The cab configuration may vary; therefore, use the figures shown as examples of label placement.

1. Determine the location of the label on the vehicle (see Step 2).
2. According to Federal Law 49 CFR Part 567.5 (c), the label should be affixed next to the driver's seating position to either the hinge pillar (Figure 1), door-latch post (Figure 2), or the door edge that meets the door-latch post (Figure 3).
  - a. Or if none of those locations is practicable, the label should be affixed to the left side of the instrument panel (Figure 4).
  - b. Or as a final location option if none of the above mentioned locations is practicable, the label should be affixed to the inward-facing surface of the door next to the driver's seating position (Figure 5) or on a flat surface under the seat (Figure 6).

**NOTE:** Do not remove an existing label or decal to place this label and do not place this label over an existing label or decal.

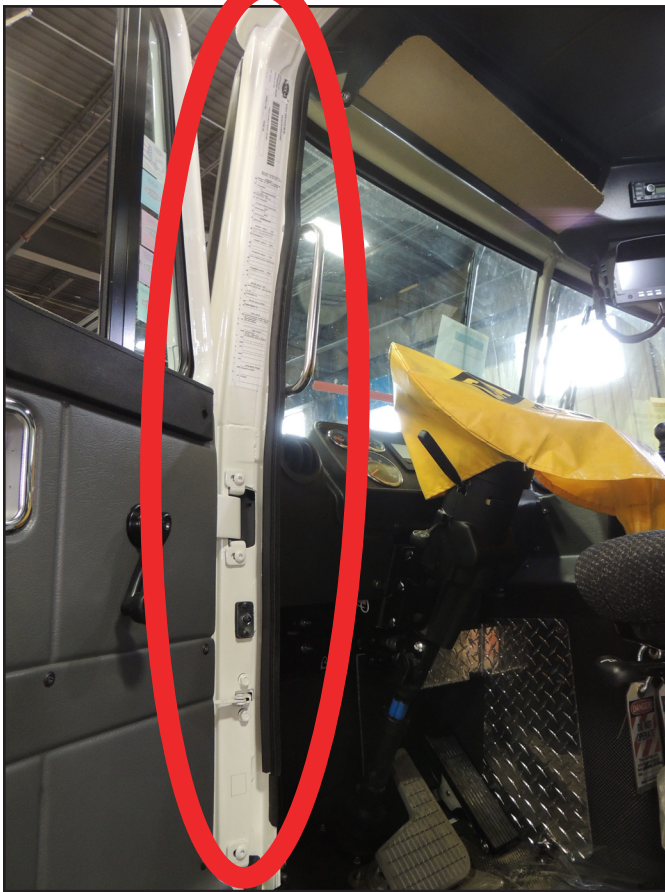


Figure 1

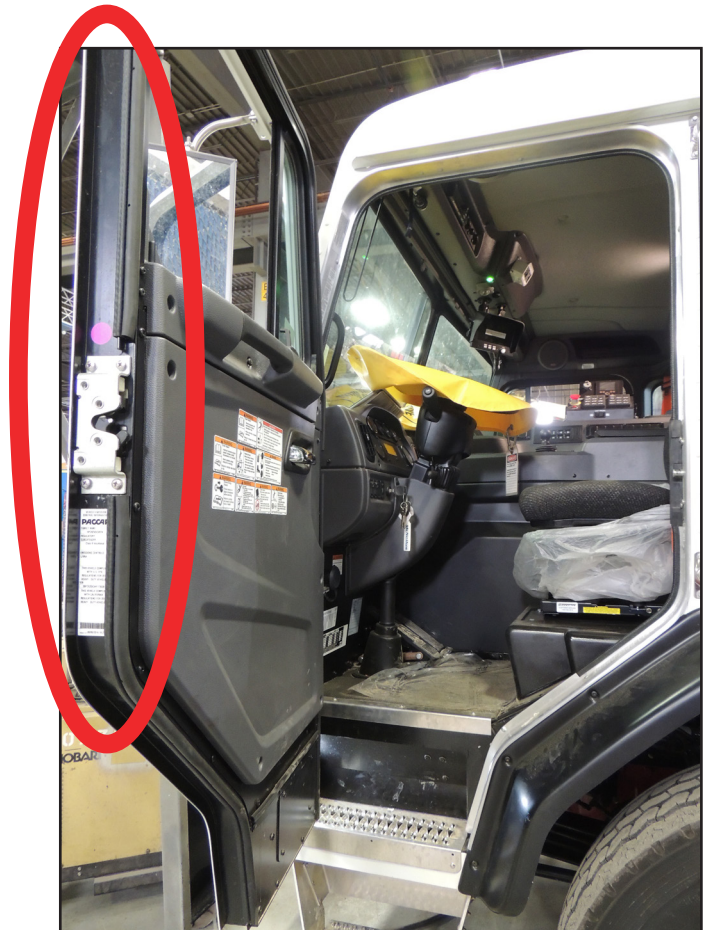


Figure 2



Figure 3



Figure 4



Figure 5



Figure 6

3. Prepare the surface of the location for the label to adhere.
4. The surface that the label is applied to should be at room temperature or above. If the truck has been outside in cold weather, it must be warmed up before the label is applied.
5. Clean the area on the vehicle with glass cleaner or Isopropyl Alcohol and a clean cloth. Let the area dry completely. There must be no dirt, oil, grease, or solvent residue remaining on the surface prior to label installation.
6. Remove and discard the paper backing from the label and stick the label to the vehicle in the designated location.
7. Remove and discard the paper backing from the clear tamper proof film and stick the film sticky side down on the label.
8. The procedure is complete.
9. Return vehicle to service.

### Continuous Improvement:

The change included in this bulletin is part of the McNeilus® Continuous Improvement Process.

*McNeilus® Company's quality policy is Providing Customer Satisfaction through Innovative Products, Dedicated Service, and a constant focus on Continuous Improvement.*

***"The Customer is our Boss!"***



**(888) 686-7278**

**www.streetsmartparts.com**