



# Vantage Mobility International

Pacifica Heated Seat Wiring Correction

Document Number: OP-W-0425

## REVISION HISTORY

AUTHOR	DESCRIPTION OF CHANGE	REV	RELEASED
David Hagstrom	Initial Release	A	2/10/17

## SCOPE

2017 VMI Pacifica built from 11/9/16 through 2/9/17. This bulletin affects approximately 140 vehicles. *REF VMI Internal doc. TS-WI-0173 RU*

## FIXES INCORPORATED

**Chrysler Pacifica's with heated front seats as an option (This includes trim level; Touring L, Touring L+ and Limited),** may have a wire harness built incorrectly that will not allow the heated seat option to work on the remaining seat once either one is removed.

Included are field repair instructions that will assist the technician to affect the necessary repair. This repair should take approx. 30 min. If there are any questions about a specific van's eligibility or about any part of the procedure, please call VMI Tech Support at 800 488 9082



# Vantage Mobility International

## Pacifica Heated Seat Wiring Correction

---

Document Number: OP-W-0425

---

### TOOLS NEEDED

Phillips head screw driver  
Solder torch

### PARTS NEEDED

Heat shrink  
Electrical tape

### SCOPE

This document provides detailed instructions and photos for repairing the driver heated seat function on a VMI converted Pacifica.

## CONTENTS

1. Begin by removing the passenger front seat from the vehicle. Remove with care and place outside the vehicle while the repair is in process as to not damage the trim or flooring inside the van.



2. Remove the OEM panel on the right A pillar by carefully pulling on the bottom and side of the panel to release the OEM clips.



Document Number: OP-W-0425

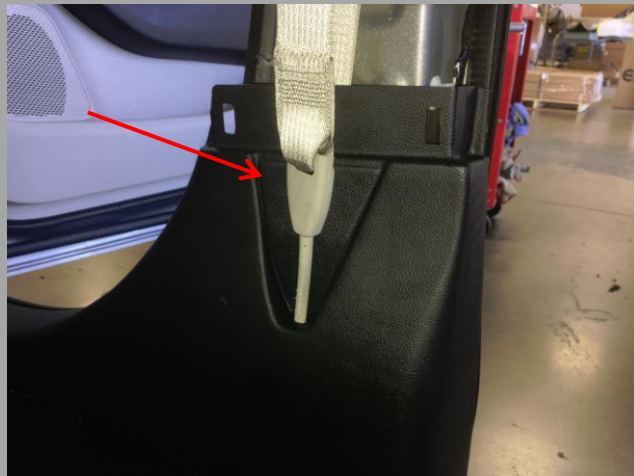
3. Remove the OEM panel on the right B pillar by carefully pulling from both sides to release the OEM clips.



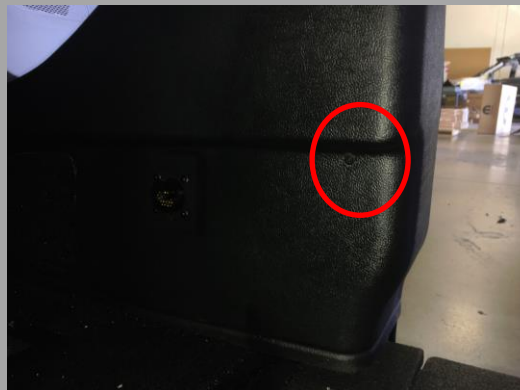
4. If the van is equipped with the front stow option disconnect the wires from the switch on the back of the panel and place panel aside for later re-installation.



5. Remove the VMI plastic seat belt cap which is held in place with double sided tape



6. Using a phillips bit remove the screw in the lower B pillar panel under the seat belt.



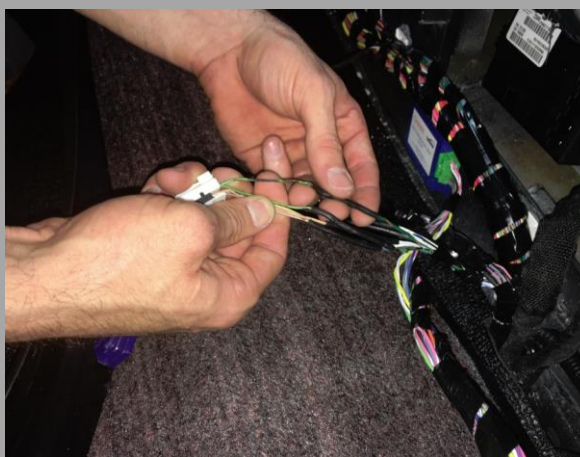
7. Carefully peel back the carpet insert on the VMI A to B panel enough to expose the self-tap screws (approximately a half inch from the top in 2 locations). Remove the screws and save for later reinstallation.



8. Set the A to B panel down on the floor to gain access to the wiring harnesses behind it. There is no need to disconnect the riveted harness terminal. Unplug the two connectors from the passenger seat module.



9. Remove the electrical tape and locate the green/brown and green/violet wires in pin positions 4 and 5 on terminal C-2. Reference figure 5.A and diagrams provided.



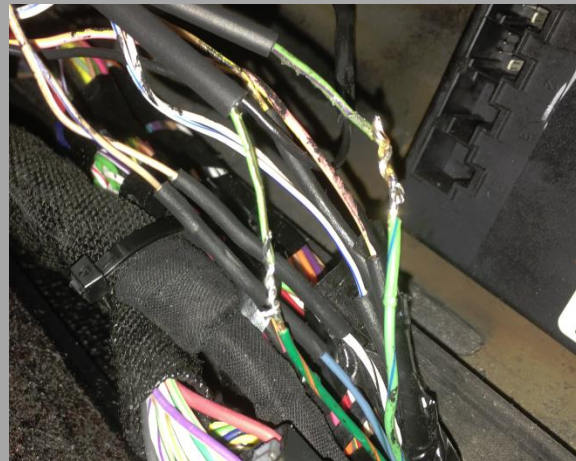


Document Number: OP-W-0425

10. Using a soldering torch heat the wires to remove the heat shrink and un-solder the wires. Remove the heat shrink once the wires are disconnected. By doing this instead of cutting the wires you will avoid having two solder points in the connecting wires.



11. Reposition the wires in correct orientation using the diagrams provided (the wires should be opposite the original position). Twist, solder, and cover with protective heat shrink. Allow the heat shrink to set for a minimum of 20 seconds before re-securing with electrical tape.



12. Re-install the plugs into the passenger seat module.



13. The wiring portion of the repair is complete at this point and should be tested before continuing to the next step. The driver's side heated seat light should illuminate and the seat should begin to warm.



14. Re-install the VMI A to B panel and secure with self-tap screws. Re-apply carpet insert and press down firmly to ensure it adheres to the panel fully.

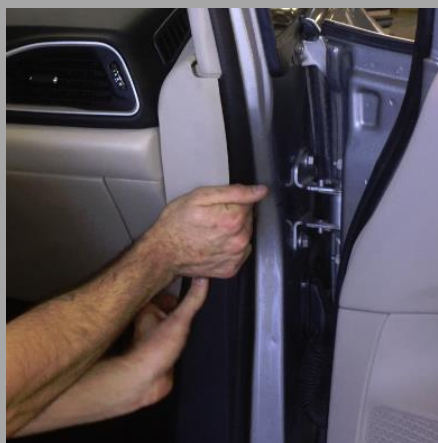




15. Once the VMI A to B panel plastic is back in place, reinstall the triangular seat belt cover and the OEM B pillar panel. Plug the seat stow button connectors back into the panel if the van is equipped with this option.



16. Reinstall the OEM A pillar panel and tuck all panels back into the weather-strip along the front and sliding door seals.



17. Reinstall the passenger front seat, plug in the seat harness, and the process is complete.



**Figure 5.A Passenger Seat Extension Harness**

