

MODEL: Karma Revero**DATE:** November 2017**TITLE:** Wheel Liner Reposition**First Release****PRIORITY:** On Complaint**APPLICABILITY:** MY17 and MY18 Revero**MARKET REGION:** North America**PURPOSE:** Inspect and reposition of the front wheel liner to correct any contact and rubbing noise

- 1) Remove the front wheels
- 2) Push the inside surface of wheel liner gently but enough to deflect liner forward in the direction shown by the arrow (fig1a) this is to align the front edge of the liner and the deflector (fig. 1b).

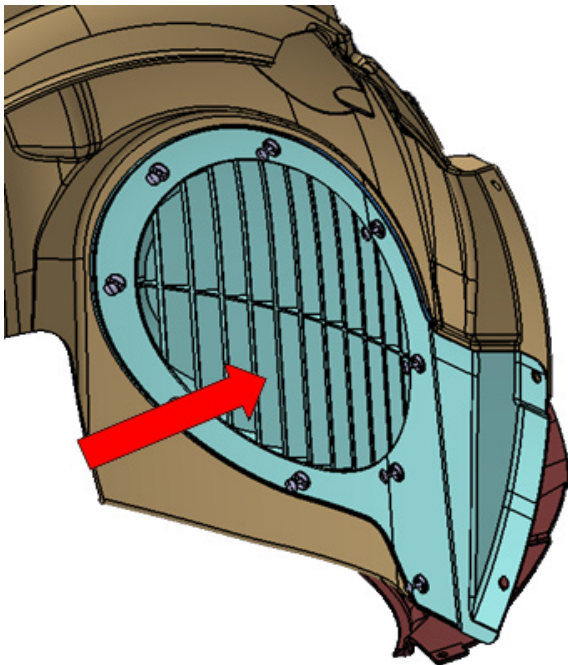


fig.1a



fig.1b

Karma Automotive Bulletins and service documents are intended for use by experienced and trained Technicians. If you lack the skills, tools, equipment and a suitable workshop for any procedure described in this document, we suggest you leave such repairs to a Karma retailer and service provider. See your service provider for advice on whether your vehicle may benefit from the information contained within this document. The information contained in the Karma Bulletin is accurate at the date of publication. However, Karma Automotive regularly updates technical information. Please check with your Karma Automotive Retailer and Karma Automotive service provider that the bulletin you intend to use contains the latest available information.

MODEL: Karma Revero

DATE: November 2017

First Release

TITLE: Wheel Liner Reposition

3) Align the 2 edges and drill a 9mm (11/32") hole.

The image (fig 2b) shows the location of the hole that will be drilled in the plastic component, that the wheel liner will attach to. (this roughly corresponds to the "IN" on the "Made in USA" wording.)

The highlighted edge, in green, is the edge that the liner should be deflected to align with.

Once the hole in the plastic part is drilled, it should be used as a guide to put the hole in the liner, after the two surfaces are aligned (fig 2b, 2c).

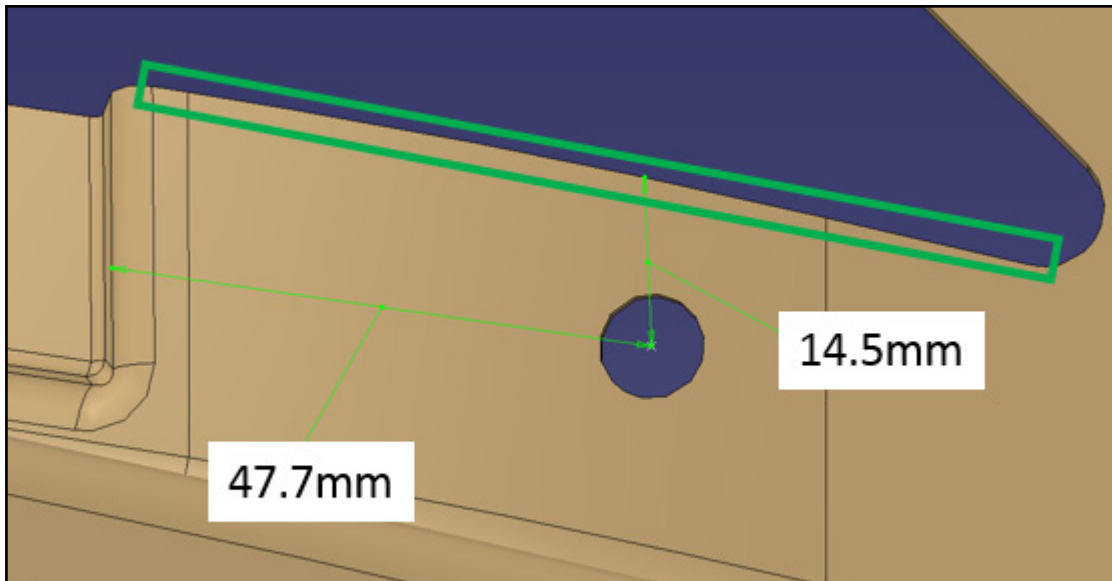


fig.2b



Karma Automotive Bulletins and service documents are intended for use by experienced and trained Technicians. If you lack the skills, tools, equipment and a suitable workshop for any procedure described in this document, we suggest you leave such repairs to a Karma retailer and service provider. See your service provider for advice on whether your vehicle may benefit from the information contained within this document. The information contained in the Karma Bulletin is accurate at the date of publication. However, Karma Automotive regularly updates technical information. Please check with your Karma Automotive Retailer and Karma Automotive service provider that the bulletin you intend to use contains the latest available information.

MODEL: Karma Revero

DATE: November 2017

First Release

TITLE: Wheel Liner Reposition

Surfaces should be held in aligned positioned (fig 3a) push pin (C148002100100) inserted from bottom and held in place by the washer (C146000700000) shown (fig 3b).

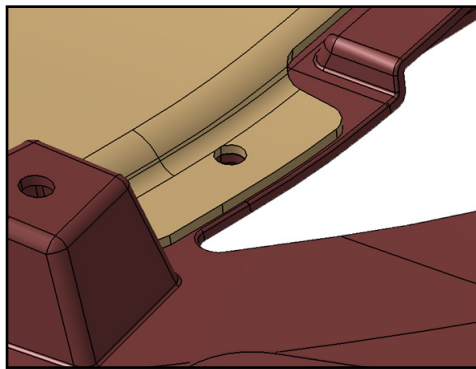


fig.3a

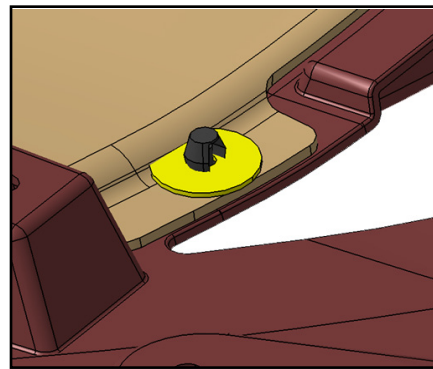


fig.3b



fig.3c

Karma Automotive Bulletins and service documents are intended for use by experienced and trained Technicians. If you lack the skills, tools, equipment and a suitable workshop for any procedure described in this document, we suggest you leave such repairs to a Karma retailer and service provider. See your service provider for advice on whether your vehicle may benefit from the information contained within this document. The information contained in the Karma Bulletin is accurate at the date of publication. However, Karma Automotive regularly updates technical information. Please check with your Karma Automotive Retailer and Karma Automotive service provider that the bulletin you intend to use contains the latest available information.



Technical Service Bulletin

TB-17-78-33

MODEL: Karma Revero

DATE: November 2017

First Release

TITLE: Wheel Liner Reposition

PARTS REQUIRED:

PART NUMBER	DESCRIPTION	QTY
C148002100100	Push-pin 2 stage 8.0 x 8.0	1 per side
C146000700000	Washer- Plastic	1 per side

SHOP SUPPLIES:

DESCRIPTION
N/A

SPECIAL TOOLS:

DESCRIPTION
N/A

CAUSAL PART:

PART NUMBER	DESCRIPTION
C131175201504	Front Wheel Liner -LH
C131175201604	Front Wheel Liner -RH

LABOR CODES:

CODE	DESCRIPTION	TIME	DEFECT CODE
78-10-01-05	Front Wheel Liner-LH Reposition	0.4	78-10-01-13
78-10-02-05	Front Wheel Liner-RH Reposition	0.4	78-10-02-13

SUBLET:

CODE	DESCRIPTION	AMOUNT
N/A		

WARRANTY DISPOSITION: This repair is covered under the New Vehicle Limited Warranty, in effect for five (5) years from the in-service date with no mileage limitation.

Karma Automotive Bulletins and service documents are intended for use by experienced and trained Technicians. If you lack the skills, tools, equipment and a suitable workshop for any procedure described in this document, we suggest you leave such repairs to a Karma retailer and service provider. See your service provider for advice on whether your vehicle may benefit from the information contained within this document. The information contained in the Karma Bulletin is accurate at the date of publication. However, Karma Automotive regularly updates technical information. Please check with your Karma Automotive Retailer and Karma Automotive service provider that the bulletin you intend to use contains the latest available information.