

LTB00955NAS3



# TECHNICAL BULLETIN

22 NOV 2017

© Jaguar Land Rover North America, LLC

NOTE: The information in Technical Bulletins is intended for use by trained, professional Technicians with the knowledge, tools, and equipment required to do the job properly and safely. It informs these Technicians of conditions that may occur on some vehicles, or provides information that could assist in proper vehicle service. The procedures should not be performed by 'do-it-yourselfers'. If you are not a Retailer, do not assume that a condition described affects your vehicle. Contact an authorized Land Rover service facility to determine whether this bulletin applies to a specific vehicle.

## INFORMATION

---

This reissue replaces all previous versions. Please destroy all previous versions.

Changes are highlighted in blue

---

### SECTION:

412-01: Climate Control System

---

### SUBJECT/CONCERN:

Air Conditioning Service Port Valve Leak

---

**AFFECTED VEHICLE RANGE:**

<b>MODEL:</b>	<b>MODEL YEAR:</b>	<b>VIN:</b>	<b>ASSEMBLY PLANT:</b>
Discovery Sport (LC)	2015-2016	500429-629372	Halewood
Range Rover Evoque (LV)	2012-2016	000447-159476	Halewood

**MARKETS:**

NORTH AMERICA

**CONDITION SUMMARY:****SITUATION:**

The Air Conditioning (A/C) system may exhibit poor performance.

**CAUSE:**

This may be caused by a leaking A/C charge port valve.

**ACTION:**

Should a customer express this concern, follow the Workshop Procedure below.

**PARTS:****NOTES:**

- Parts will vary depending on the use of Internal Heat Exchanger (IHX) and non-IXH Air Conditioning (A/C) pipes. Refer to the Service Information to correctly identify the required part.
- If required, an allowance of \$7.60 USD may be claimed using 'ZZZ001' for a M8 x 1.0 mm threaded Schrader air conditioning valve core removal tool.

PART NUMBER	DESCRIPTION	QUANTITY
LR088548	A/C Charge Port Valve (post-2016MY)	2
LR002940	A/C Charge Port Valve (pre-2016MY)	2

---

## TOOLS:

Refer to Workshop Manual for any required special tools.

---

## WARRANTY:

### NOTES:

- Repair procedures are under constant review, and therefore times are subject to change; those quoted here must be taken as guidance only. Always refer to JLR claims submission system to obtain the latest repair time.
- The JLR Claims Submission System requires the use of causal part numbers. Labor only claims must show the causal part number with a quantity of zero.

DESCRIPTION	SRO	TIME (HOURS)	CONDITION CODE	CAUSAL PART
Air conditioning - Port Valve - Renew - Pair	82.10.61	0.5	07	LR088548

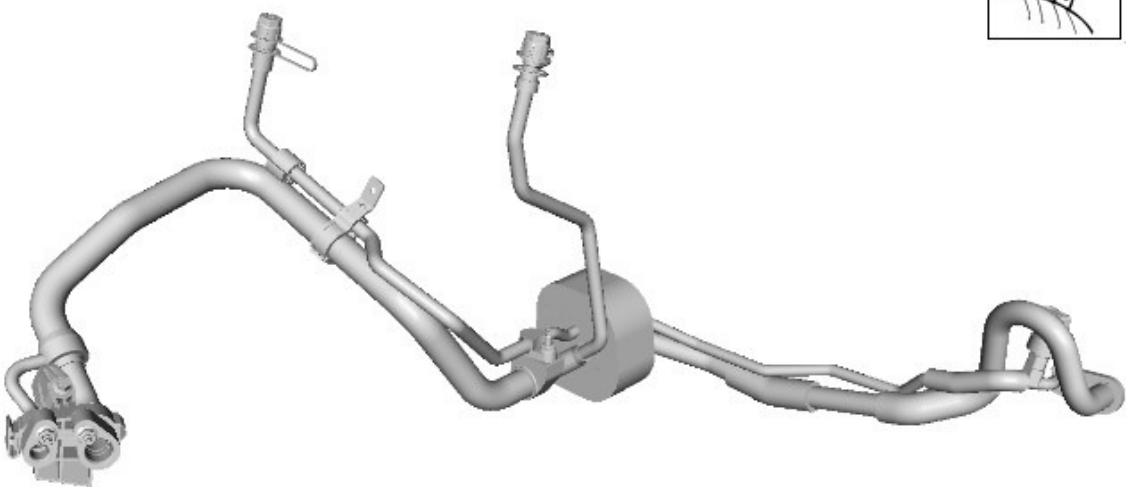
### NOTE:

Normal Warranty procedures apply.

## SERVICE INFORMATION:

---

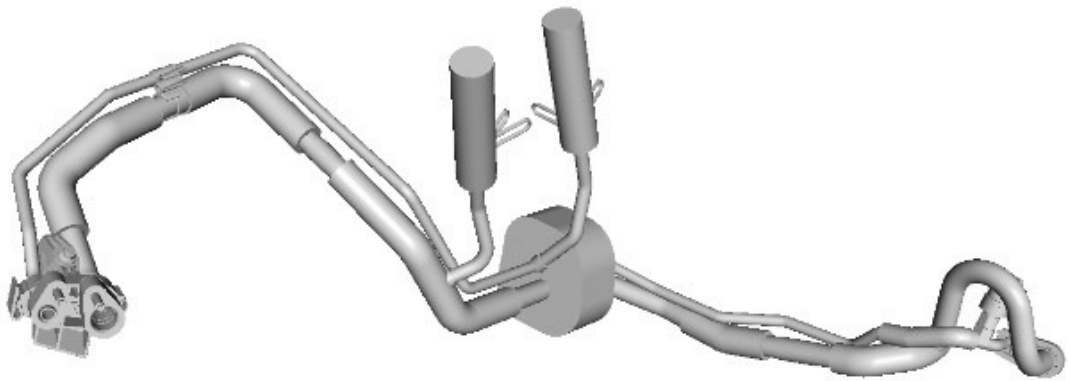
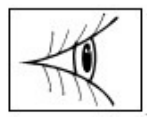
1 



E192164

**All with Internal Heat Exchanger (IHX) Air Conditioning pipes: install LR088548.**

2 



E192165

**Pre-2016MY with Non-Internal Heat Exchanger (IHX) Air Conditioning pipes:** - install LR002940.

- Discovery Sport (L550) up to VIN 544576
- Range Rover Evoque (L538) up to VIN 077911

---

**3 Post-2016MY with Non-Internal Heat Exchanger (IHX) Air Conditioning pipes:** - install LR088548.

- Discovery Sport (L550) from VIN 544577
- Range Rover Evoque (L538) from VIN 077912

WORKSHOP PROCEDURE:

---

- 1** Recover the Air Conditioning (A/C) system (see TOPIx Workshop Manual section 412-00: Climate Control System - General Information - General Procedures - Air Conditioning (A/C) System Recovery, Evacuation and Charging).

---

**2**

**NOTE:**

Repeat this step on both Air Conditioning (A/C) system charge port Schrader valves.



Use a suitable tool to remove and discard the A/C system charge port Schrader valve (turn anticlockwise).

---

3

**NOTE:**

Repeat this step on both Air Conditioning (A/C) system charge port Schrader valves.



Use a suitable tool to install new A/C system charge port Schrader valves (turn clockwise).

- Torque: **2.4 Nm.**

- 
- 4 Charge the A/C system (see TOPIx Workshop Manual section 412-00: Climate Control System - General Information - General Procedures - Air Conditioning (A/C) System Recovery, Evacuation and Charging).