

<b>Subject:</b>  <b>CHECK ENGINE LIGHT ON WITH DTC P2610 AND P2507</b>	<b>Bulletin No:</b> 01-001/17
	<b>Last Issued:</b> 01/13/2017

## BULLETIN NOTE

This bulletin supersedes the previously issued bulletin(s) listed below. The changes are noted below in Red beside the change bars.

Previously Issued TSBs:	Date(s) Issued
01-018/15	08/06/15
01-017/14	10/17/14
01-001/13	01/07/13, 01/16/13 and 09/25/13

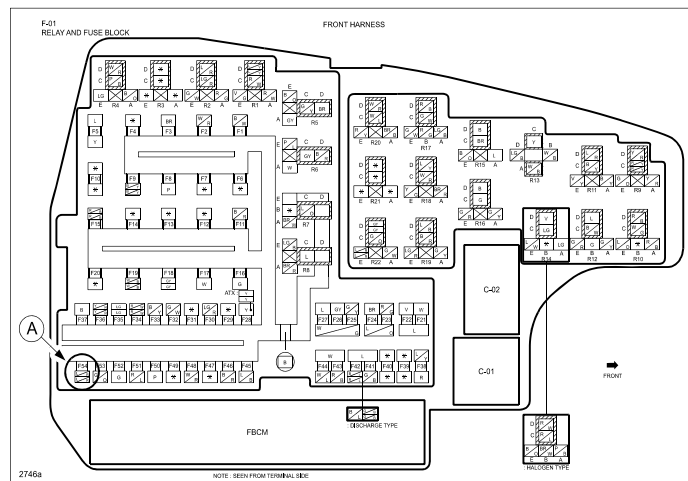
## APPLICABLE MODEL(S)/VINS

2013-2017 CX-5	2016-2017 CX-3
2014-2017 Mazda6	2016-2017 MX-5
2014-2017 Mazda3	2016-2017 CX-9

## DESCRIPTION

Some vehicles may experience the CHECK ENGINE LIGHT ON with DTC P2610 and P2507 stored in memory after engine start and room fuse 15A (A) removed.

- P2610:00: Instrument cluster internal engine off timer performance problem
- P2507:00: PCM battery voltage low input

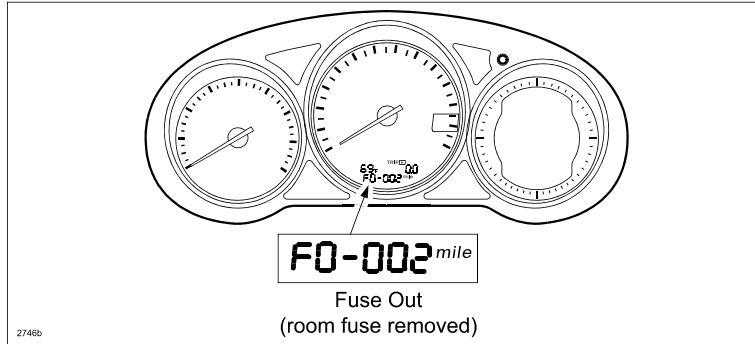


**CONSUMER NOTICE:** The information and instructions in this bulletin are intended for use by skilled technicians. Mazda technicians utilize the proper tools/equipment and take training to correctly and safely maintain Mazda vehicles. These instructions should not be performed by "do-it-yourselfers." Customers should not assume this bulletin applies to their vehicle or that their vehicle will develop the described concern. To determine if the information applies, customers should contact their nearest authorized Mazda dealership. Mazda North American Operations reserves the right to alter the specifications and contents of this bulletin without obligation or advance notice. All rights reserved. No part of this bulletin may be reproduced in any form or by any means, electronic or mechanical---including photocopying and recording and the use of any kind of information storage and retrieval system ---without permission in writing.

As a past malfunction, the customer will not notice it (no warning light illuminated), but the DTC may be found during a vehicle service. P2507 in this situation is only applicable on 2016 and later models.

This is caused by the engine being started 3 or more times after a short duration of engine off (less than 15 seconds) with the room fuse removed.

**NOTE:** The odometer will display "F0-002" during transport mode (room fuse 15A removed). Transport mode is canceled when room fuse 15A is installed or the vehicle odometer is more than 12.4mi (20km).



Vehicles in dealer inventory with this concern should be repaired using the following repair procedure.

## REPAIR PROCEDURE

1. Verify DTC P2610 and P2507 are stored in PCM memory.
2. Install ROOM fuse 15A with ignition OFF.
3. Start the engine and let it run for at least 10 seconds, then stop the engine.
4. Start the engine again and verify that the CHECK ENGINE LIGHT is not illuminated, then stop the engine.
5. Clear DTC P2610 and P2507 from PCM memory using IDS.
6. Verify no other DTCs are stored in memory. If so, troubleshoot them according to the MS3 online instructions or Workshop Manual.

## WARRANTY INFORMATION

### NOTE:

- This repair will be covered only while the vehicle is in Dealer New Car status.
- Additional diagnostic time cannot be claimed for this repair.

Warranty Type	A
Symptom Code	6X
Damage Code	9W
DTC	P2610
Part Number Main Cause	99-705-1315
Quantity	0
Operation Number / Labor Hours:	XXH35XRX / 0.2 Hrs.