



Technical Journal

TITLE:

Service Action S89807: Exterior door handle tape

REF NO: TJ 32183.1.3	ISSUING DEPARTMENT: Technical Service	CAR MARKET: United States and Canada	
PARTNER: 3 US 7510 Volvo Car USA		ISSUE DATE: 2017-01-26	STATUS DATE: 2017-02-03
FUNC GROUP: 8300	FUNC DESC: Doors, lids and convertible top	Page 1 of 7	

“Right first time in Time”

Attachment

File Name	File Size
Picture.jpg	0.0206 MB
TJ 32183.pdf	1.1829 MB

Vehicle Type

Type	Eng	Eng Desc	Sales	Body	Gear	Steer	Model Year	Plant	Chassis range	Struc Week Range
234							2017-2017	21	0000201-0006645	0-0
256							2016-2017	21	0000202-0133150	0-0

CSC Customer Symptom Codes

Code	Description
XW	Service/repair/Service action/Recall

VST Operation Number

DTC Diagnostic Trouble Codes

Rows beginning with * are modified

Note! If using a printed copy of this Technical Journal, first check for the latest online version.

Text

**DESCRIPTION:**

*New repair procedure added. No longer necessary to remove the door handles.

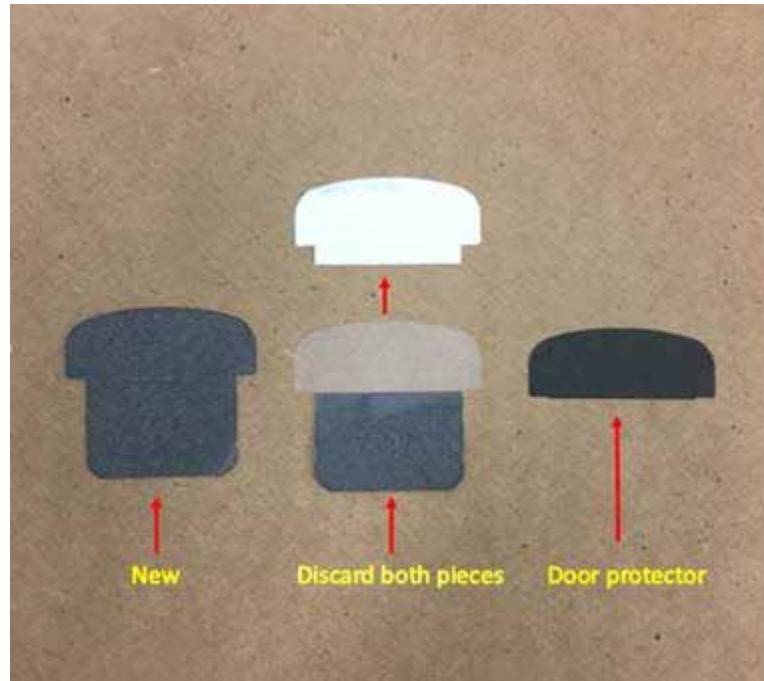
Volvo Car USA LLC and Volvo Car of Canada Ltd (Volvo) on behalf of Volvo Car Corporation, has decided to launch Service Campaign S89807 on certain model year 2016 – 2017 XC90 and S90 vehicles.

Volvo has identified the painted surface under the exterior door handles may become scratched by the handles.

SERVICE:

The corrective action is add tape under all four (4) exterior door handles per attached instructions.

To view TJ attachments continue to next page. This TJ has two attachments.





Volvo Car Customer Service

QB Instruction VCC-496312-5

Title	Exterior Door Handle	Page	1 (4)
Action	Adjustment	Operation number:	97173-2

Affected vehicles

Model year	Model
2017	S90 (17-)
2016, 2017	XC90 (16-)

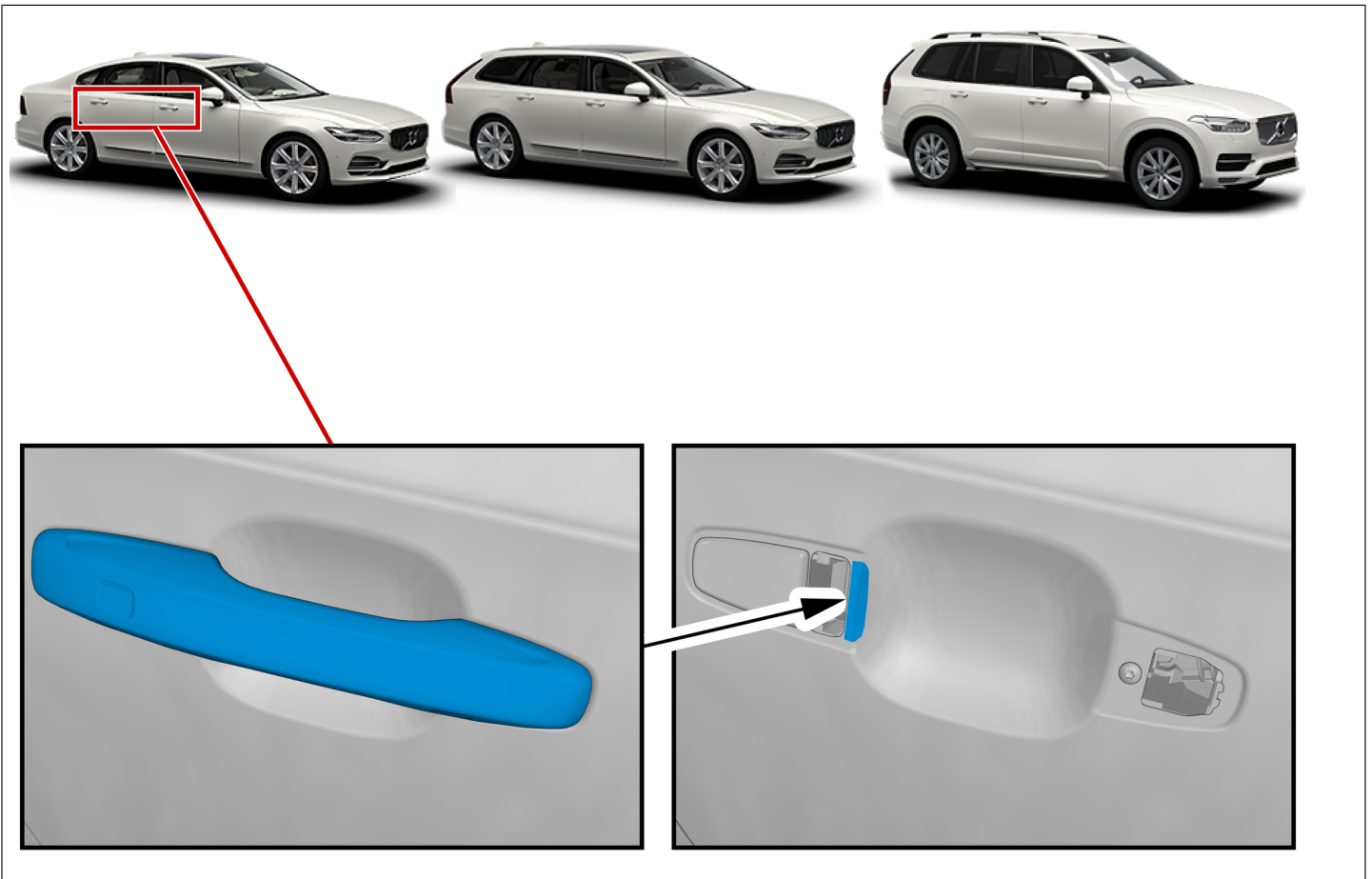
Materials

Materials	Qty.	Part No.	Notes
Tape	4.0	31675400	

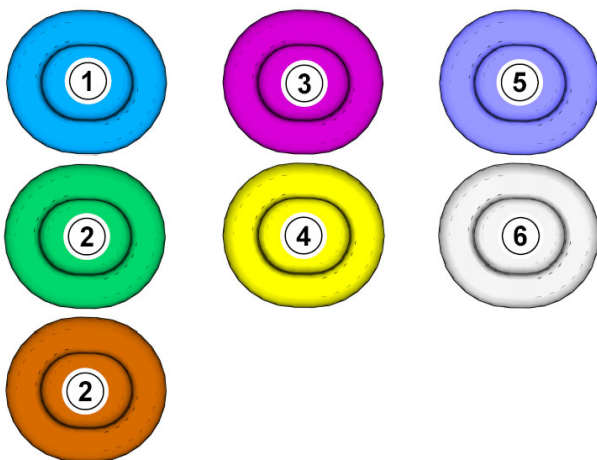
Special tools

Description	Part No.
Key	999 7390

Orientation view

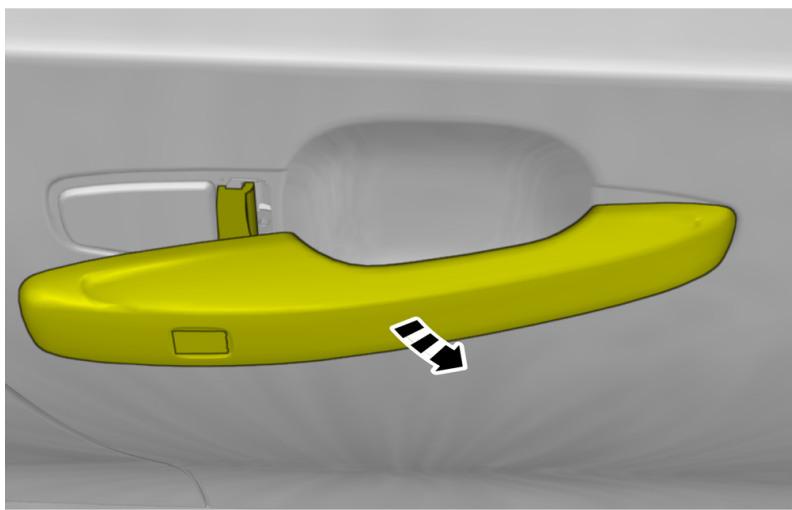


Color symbols

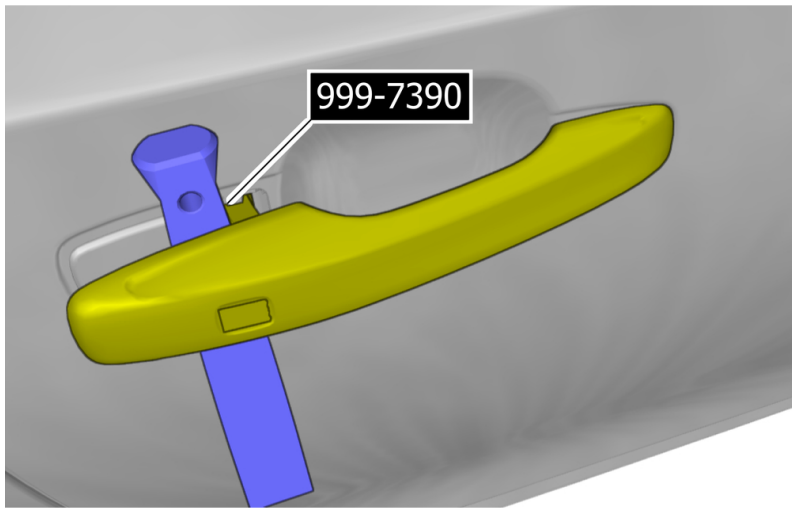


Note! This colour chart displays (in colour print and electronic version) the importance of the different colours used in the images of the method steps.

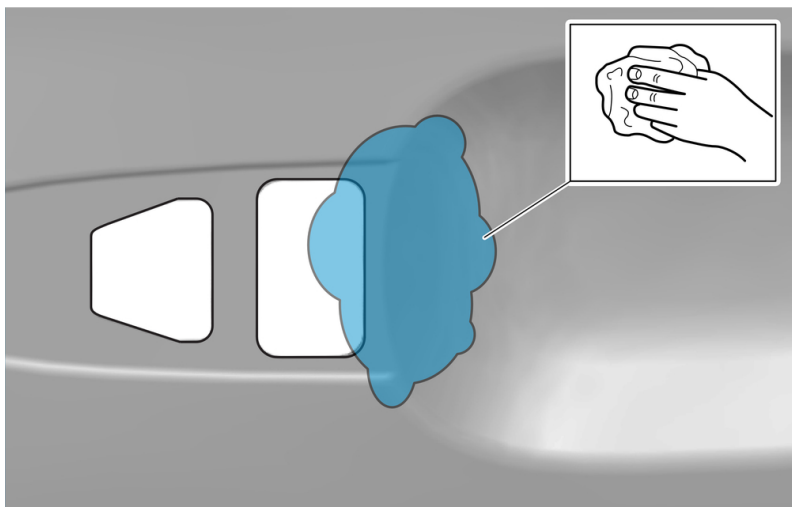
- 1 . Used for focused component, the component with which you will do something.
- 2 . Used as extra colors when you need to show or differentiate additional parts.
- 3 . Used for attachments that are to be removed/installed. May be screws, clips, connectors, etc.
- 4 . Used when the component is not fully removed from the vehicle but only hung to the side.
- 5 . Used for standard tools and special tools.
- 6 . Used as background color for vehicle components.



Lift the marked component forward.

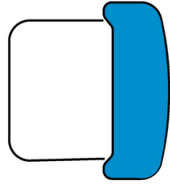


Special Tool: T9997390, Key



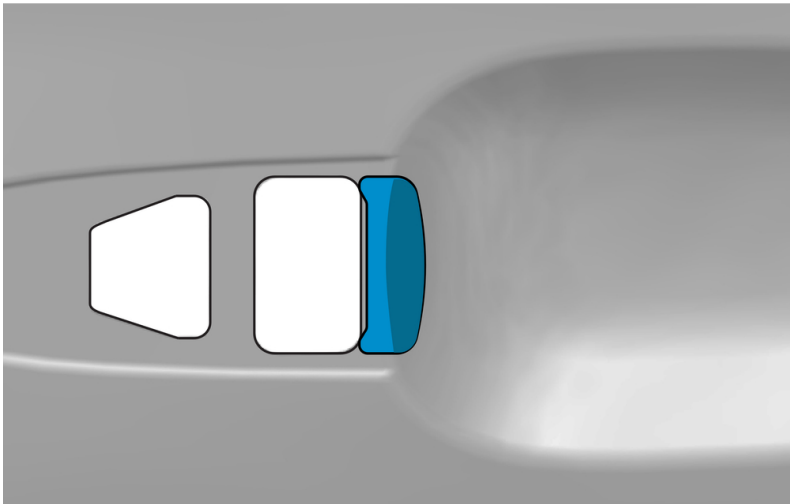
Caution! Make sure that the surface is clean and free of foreign material.

NOTE: The door handle has been removed for illustration purposes only.



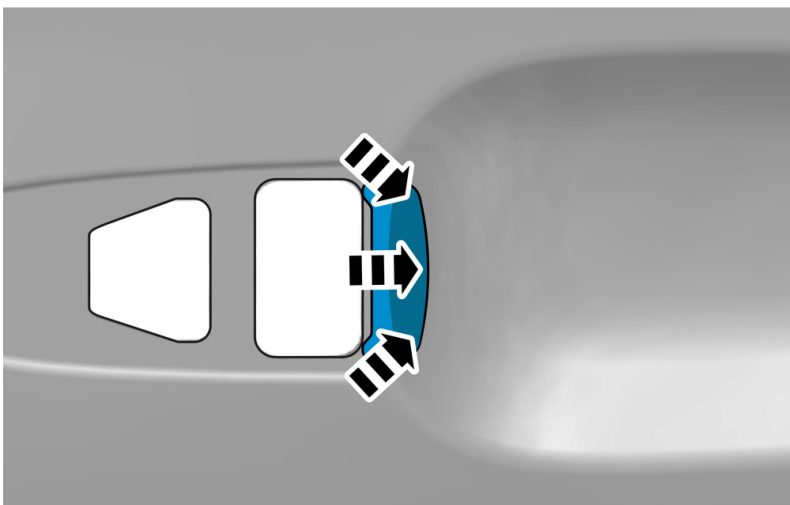
Note! Make sure to clean your hands before the following step.

Remove the protective film.
Use the marked component only.



Place the component where indicated in the graphic.

NOTE: The door handle has been removed for illustration purposes only.



Press the marked component.