



Technical Journal

TITLE:
Locking/Unlocking SPA cars in Transport Mode

REF NO: TJ 32393.1.1	ISSUING DEPARTMENT: Technical Service	CAR MARKET: United States and Canada	
PARTNER: 3 US 7510 Volvo Car USA		ISSUE DATE: 2017-02-13	STATUS DATE: 2017-02-28
FUNC GROUP: 8342	FUNC DESC: Lock cylinder; lock cylinder set	Page 1 of 6	

“Right first time in Time”

Attachment

File Name	File Size
SPA_Transport_Locking_Unlocking.pdf	0.7412 MB

Vehicle Type

Type	Eng	Eng Desc	Sales	Body	Gear	Steer	Model Year	Plant	Chassis range	Struc Week Range
234							0-0		-	0-0
235							0-0		-	0-0
236							0-0		-	0-0
256							0-0		-	0-0

CSC Customer Symptom Codes

Code	Description
UH	Locking/unlocking/Central locking does not work
VZ	Locking/unlocking/Other central locking problems
TU	Central locking/Central locking by using button in door panel does not work
9C	Tailgate/trunk lid/Manual locking/unlocking does not work

VST Operation Number



DTC Diagnostic Trouble Codes

Rows beginning with * are modified

Note! If using a printed copy of this Technical Journal, first check for the latest online version.

Text

DESCRIPTION:

The remotes do not function while the vehicle is in Transport Mode.

SERVICE:

See attachment for locking/unlocking in Transport Mode.

SPA_Transport_Locking_Unlocking.pdf

VEHICLE REPORT:

N/A.

To view TJ attachment continue to next page. This TJ has one attachment.



Key handling in transport mode, SPA

During transport from the factory and port, a blister pack with keys is stored on the front passenger seat.

All SPA cars are keyless start. It is not necessary to move the keys from this position when starting the engine.

Key blades are supplied in a small plastic bag attached to the blister pack.

There is no key blade inside the remote.

Never put all keys in the glovebox; when power is shut down, it is not possible to open until the engine is started.





Locking

1. Driver inside car, engine running, all doors & trunk/tailgate closed.
2. Press the lock button on the driver's door panel. Doors are locked.

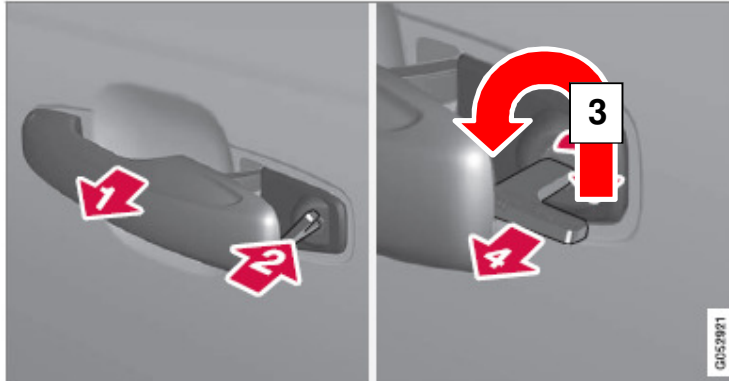


3. Engage the electric parking brake (when needed).
4. Turn off the engine.
5. Take the complete blister pack and bag.
6. Open the driver door and step out of car; keep the driver's door open.
7. Take one of the key blades out from the plastic bag via the pre-cut circular hole.





8. Lock driver door by using the key blade, see details below.



1. Pull out the front door handle so that the lock is visible.
2. Insert the key blade in the lock.
3. Turn key counter-clockwise 45 degrees so that the key blade is pointing straight up.
4. Turn the key back 45 degrees to its starting position. Remove the key from the lock. Close the door. Check that the door is locked by pulling on the handle.
5. Put the key blade back into the plastic bag through the pre-cut circular hole.

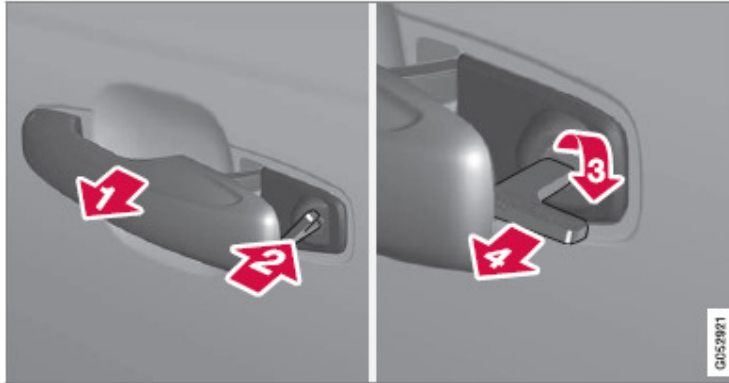
Unlocking

1. Take one of the key blades out from the plastic bag via the pre-cut circular hole.





2. *Unlock driver door by using the key blade, see details below.*



1. *Pull out the front door handle so that the lock is visible.*
2. *Insert the key blade in the lock.*
3. *Turn key clockwise 45 degrees so that the key blade is pointing straight back.*
4. *Turn the key back 45 degrees to its starting position. Remove the key from the lock.*