

MODEL: Karma Revero

DATE: July 2017

TITLE: ADAS Calibration Board

First Release

APPLICABILITY: All Karma Revero Models

MARKET REGION: All

PURPOSE: Using the Calibration Tool and Karma Sync.

Karma Automotive has a special service tool C161197900100 for use with Karma Sync to Calibrate the Advanced Driver Assistance System (fig.1). This is the ADAS Target.



fig.1

Karma Automotive Bulletins and service documents are intended for use by experienced and trained Technicians. If you lack the skills, tools, equipment and a suitable workshop for any procedure described in this document, we suggest you leave such repairs to a Karma retailer and service provider. See your service provider for advice on whether your vehicle may benefit from the information contained within this document. The information contained in the Karma Bulletin is accurate at the date of publication. However, Karma Automotive regularly updates technical information. Please check with your Karma Automotive Retailer and Karma Automotive service provider that the bulletin you intend to use contains the latest available information.

MODEL: Karma Revero

DATE: July 2017

TITLE: ADAS Calibration Board

First Release

TARGET SET UP (fig.2)

- 1) The Board must be placed so it is 90cm off the ground
- 2) Board must align and be placed in front of the center of the vehicle as close as possible to the vehicle (within 10cm of the front bumper cover).

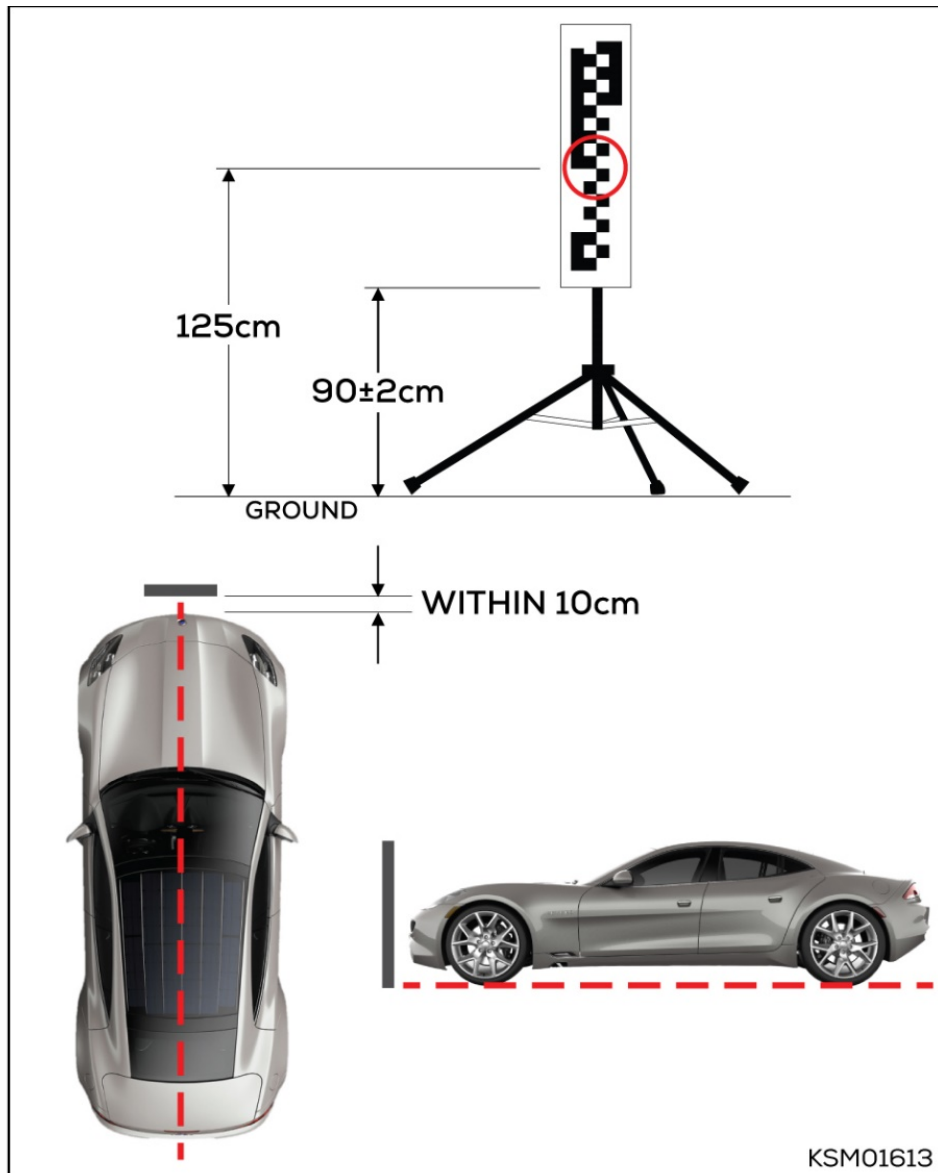


fig.2

Karma Automotive Bulletins and service documents are intended for use by experienced and trained Technicians. If you lack the skills, tools, equipment and a suitable workshop for any procedure described in this document, we suggest you leave such repairs to a Karma retailer and service provider. See your service provider for advice on whether your vehicle may benefit from the information contained within this document. The information contained in the Karma Bulletin is accurate at the date of publication. However, Karma Automotive regularly updates technical information. Please check with your Karma Automotive Retailer and Karma Automotive service provider that the bulletin you intend to use contains the latest available information.

MODEL: Karma Revero

DATE: July 2017

TITLE: ADAS Calibration Board

First Release

3) Start Karma Sync and enter - Advnace Diagnostics (fig. 3).

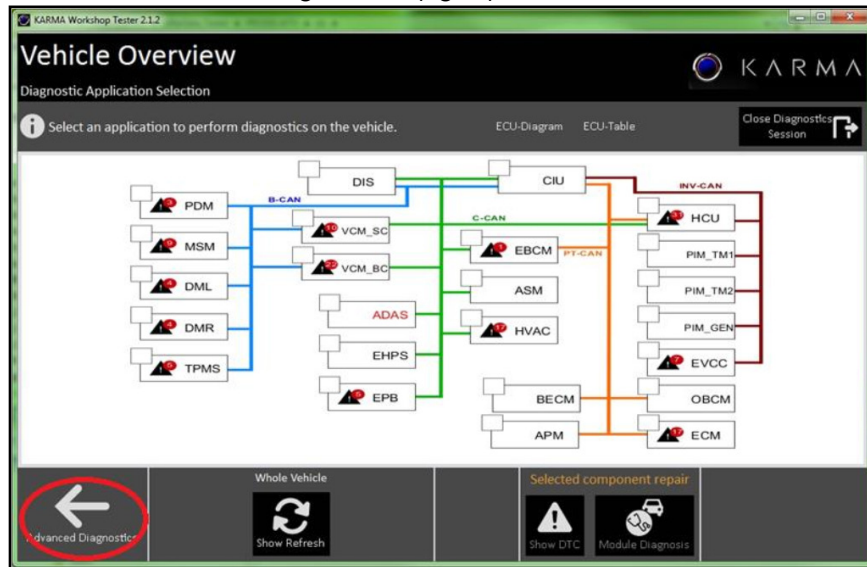


fig.3

4) Enter - Vehicle Diagnostics as shown (fig.4)

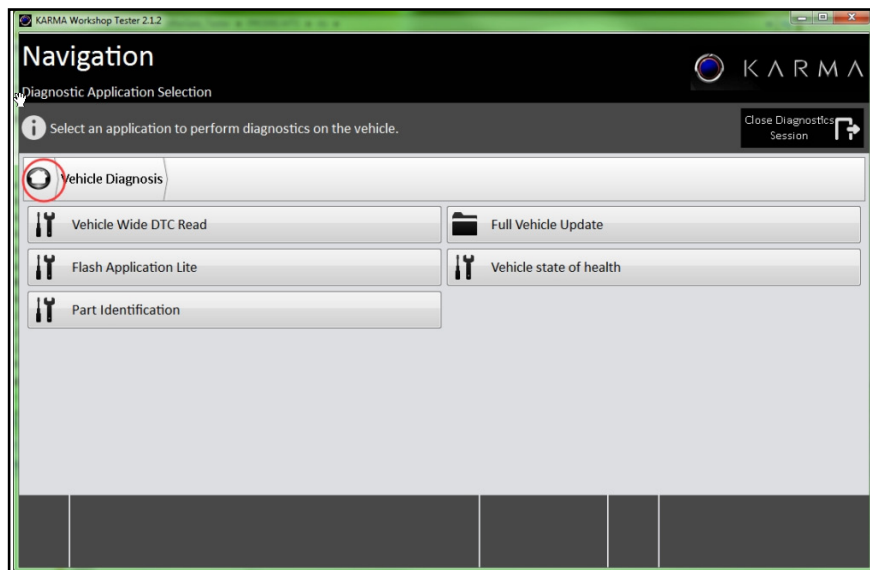


fig.4

Karma Automotive Bulletins and service documents are intended for use by experienced and trained Technicians. If you lack the skills, tools, equipment and a suitable workshop for any procedure described in this document, we suggest you leave such repairs to a Karma retailer and service provider. See your service provider for advice on whether your vehicle may benefit from the information contained within this document. The information contained in the Karma Bulletin is accurate at the date of publication. However, Karma Automotive regularly updates technical information. Please check with your Karma Automotive Retailer and Karma Automotive service provider that the bulletin you intend to use contains the latest available information.

MODEL: Karma Revero

DATE: July 2017

TITLE: ADAS Calibration Board

First Release

5) Click on - Service Procedure (fig.5)

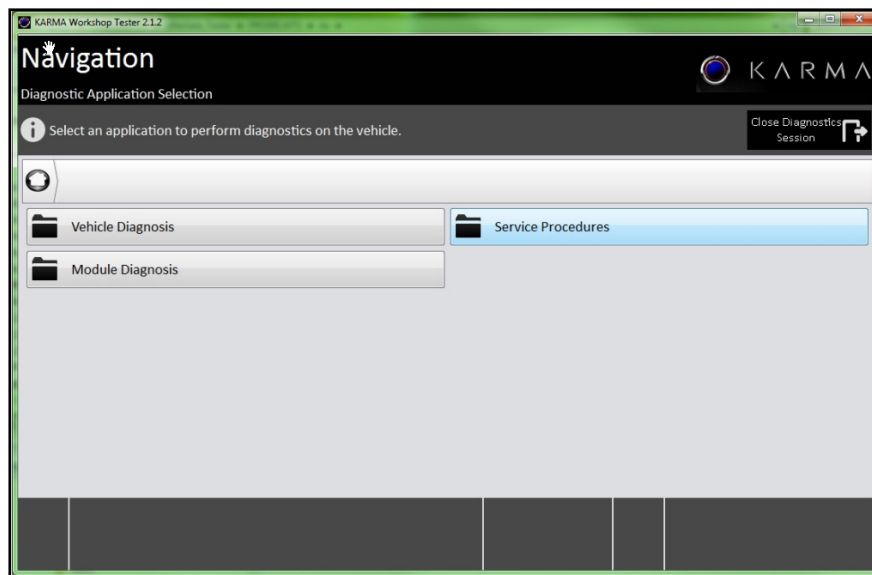


fig.5

6) Click on - ADAS Calibration as shown below (fig.6) Follow the prompts to calibrate.

7) Use labor operation 90-25-16-05 to claim calibration (0.3 hours) under warranty. Defect Code may vary.

8) Perform a road test to verify the function of ADAS and address DTC's if any appear.

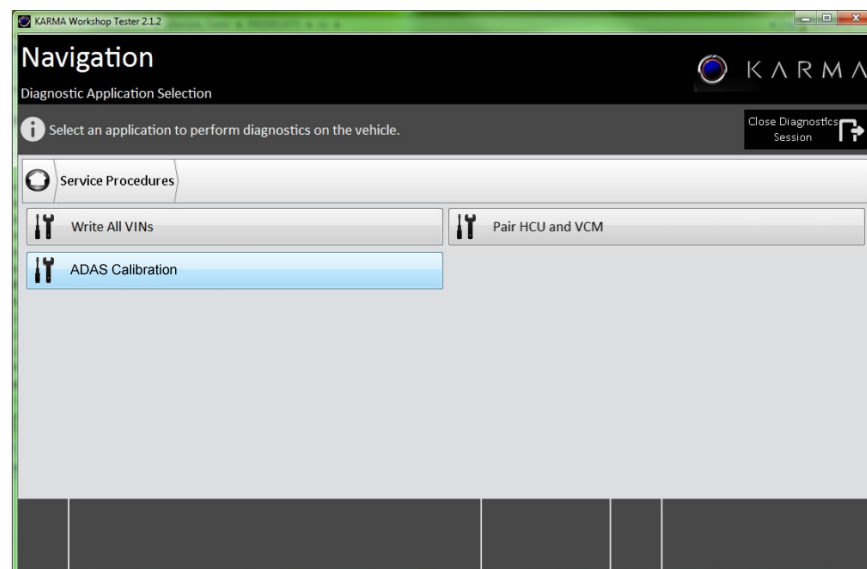


fig.6

Karma Automotive Bulletins and service documents are intended for use by experienced and trained Technicians. If you lack the skills, tools, equipment and a suitable workshop for any procedure described in this document, we suggest you leave such repairs to a Karma retailer and service provider. See your service provider for advice on whether your vehicle may benefit from the information contained within this document. The information contained in the Karma Bulletin is accurate at the date of publication. However, Karma Automotive regularly updates technical information. Please check with your Karma Automotive Retailer and Karma Automotive service provider that the bulletin you intend to use contains the latest available information.