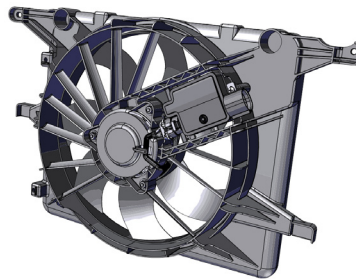


SC-17-20-08**MODEL:** Karma Revero**DATE:** June 2017**TITLE:** Radiator Fan Inspection**First Release****PRIORITY:** On Complaint**APPLICABILITY:** MY17 and MY18 Revero**MARKET REGION:** North America**PURPOSE:** Inspection of Radiator and Fan Assembly

Vehicles exhibiting a vibration in several areas:

- Very slight vibration felt in steering wheel or instrument panel while vehicle is stationary and in stealth mode
- Vibration felt in front fascia and front fenders when A/C compressor is active
 1. Verify the fan operation through Karma Sync- by operating "Fan 3" on high
 2. Inspect the vehicle to verify fan installation is correct
 3. Verify fan is not binding and it spins freely



Karma Automotive Bulletins and service documents are intended for use by experienced and trained Technicians. If you lack the skills, tools, equipment and a suitable workshop for any procedure described in this document, we suggest you leave such repairs to a Karma retailer and service provider. See your service provider for advice on whether your vehicle may benefit from the information contained within this document. The information contained in the Karma Bulletin is accurate at the date of publication. However, Karma Automotive regularly updates technical information. Please check with your Karma Automotive Retailer and Karma Automotive service provider that the bulletin you intend to use contains the latest available information.

MODEL: Karma Revero

DATE: June 2017

First Release

TITLE: Radiator Fan Inspection

The CRFM assembly (fan and shroud with radiator) must be installed flush with the skid plate surface on the bottom, and centered on the top bracket.
 Raise the vehicle to inspect underneath.

1. Inspect lower radiator mounting grommet

- Verify there is no gap between grommet flange and skid plate surface (fig 1a)
- Verify there are no A/C lines, intercooler pipe, or other components are not contacting the assembly

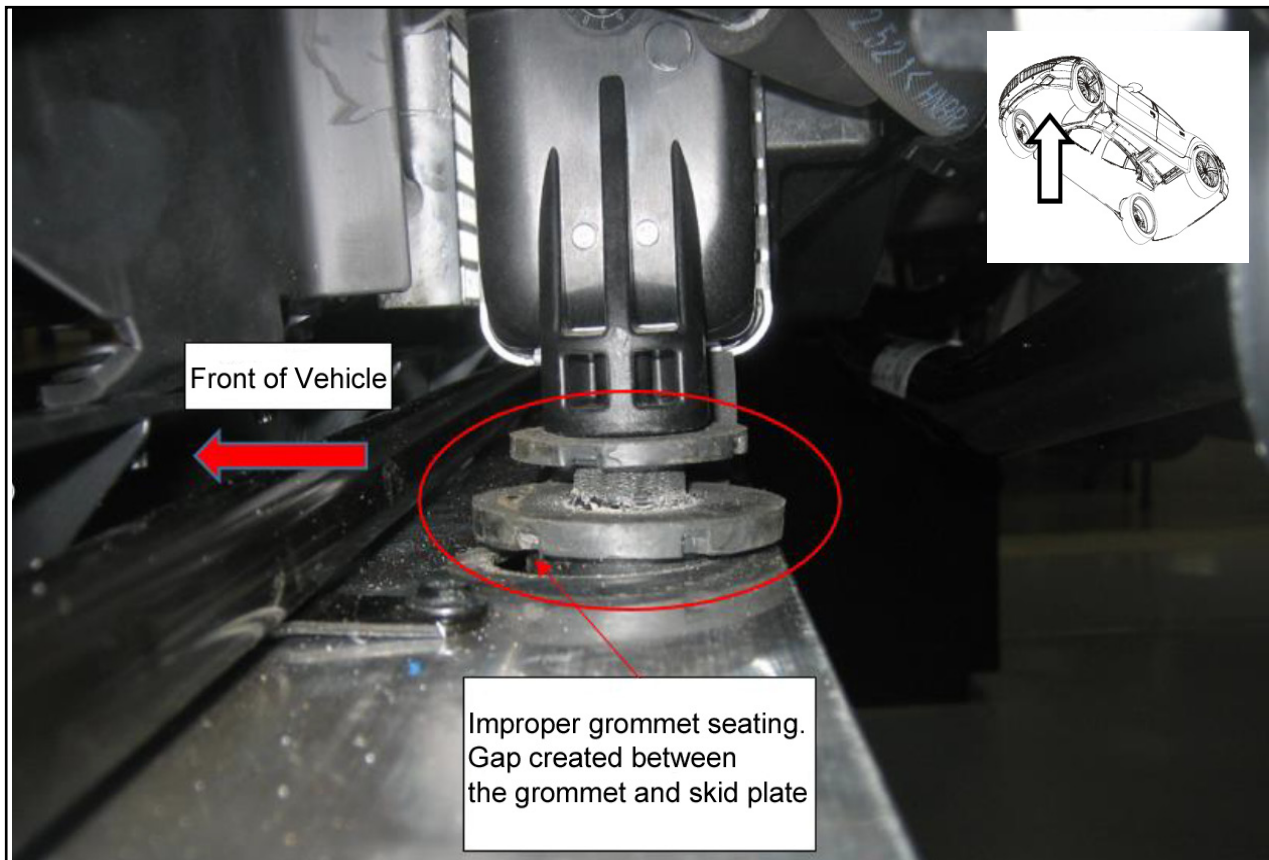


fig.1a

Karma Automotive Bulletins and service documents are intended for use by experienced and trained Technicians. If you lack the skills, tools, equipment and a suitable workshop for any procedure described in this document, we suggest you leave such repairs to a Karma retailer and service provider. See your service provider for advice on whether your vehicle may benefit from the information contained within this document. The information contained in the Karma Bulletin is accurate at the date of publication. However, Karma Automotive regularly updates technical information. Please check with your Karma Automotive Retailer and Karma Automotive service provider that the bulletin you intend to use contains the latest available information.

MODEL: Karma Revero

DATE: June 2017

First Release

TITLE: Radiator Fan Inspection

2. Open hood

- Inspect upper CRFM mounting grommets
- Confirm upper CRFM grommets are installed and in position (fig.2a and fig.2b)
- Again verify there is no interference with other components and the CRFM assembly

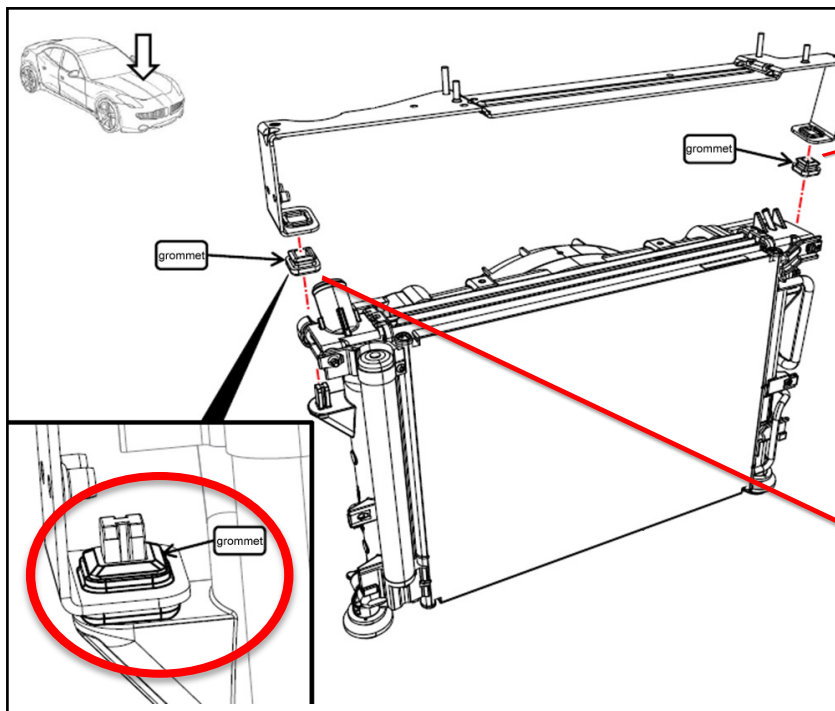


fig.2a



fig.2b

If the installation is not in alignment loosen the fittings and align the CRFM assembly properly to fit as described.

Activate fan again using Karma sync - "Fan 3" on high - to verify vibration is no longer present.

Karma Automotive Bulletins and service documents are intended for use by experienced and trained Technicians. If you lack the skills, tools, equipment and a suitable workshop for any procedure described in this document, we suggest you leave such repairs to a Karma retailer and service provider. See your service provider for advice on whether your vehicle may benefit from the information contained within this document. The information contained in the Karma Bulletin is accurate at the date of publication. However, Karma Automotive regularly updates technical information. Please check with your Karma Automotive Retailer and Karma Automotive service provider that the bulletin you intend to use contains the latest available information.

MODEL: Karma Revero

DATE: June 2017

TITLE: Radiator Fan Inspection

First Release

If the fan continues displaying vibration, loosen bolts #3 as indicated, re-torque to 4-6Nm (fig.3)

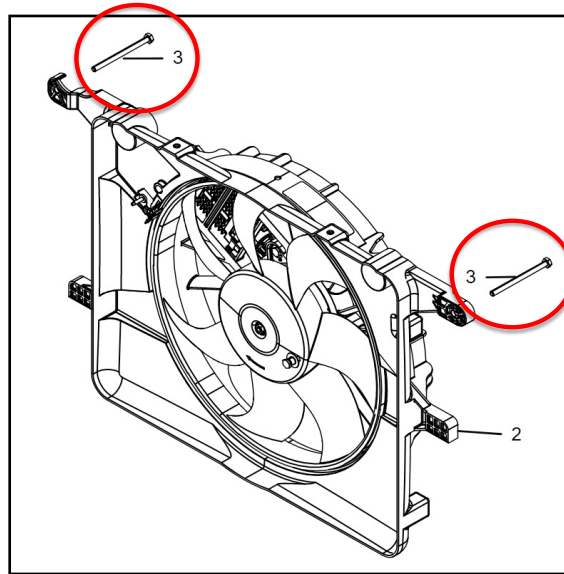


fig.2b

Activate fan again using Karma sync - "Fan 3" on high - verify vibration is no longer present
 If the fan continues to display the concern create a TSS case and replace the fan and shroud assembly, using part number C131136300101.

Record the check label (fig.3) for both the new (this must be after February 2016 for replacement fans) and problem fans and provide the numbers and image in the TSS Case.
 Replacement of the fan is claimed as normal warranty if required.

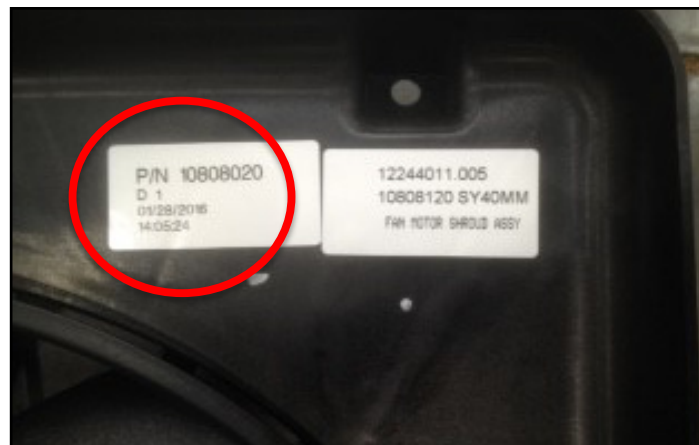


fig.3

Karma Automotive Bulletins and service documents are intended for use by experienced and trained Technicians. If you lack the skills, tools, equipment and a suitable workshop for any procedure described in this document, we suggest you leave such repairs to a Karma retailer and service provider. See your service provider for advice on whether your vehicle may benefit from the information contained within this document. The information contained in the Karma Bulletin is accurate at the date of publication. However, Karma Automotive regularly updates technical information. Please check with your Karma Automotive Retailer and Karma Automotive service provider that the bulletin you intend to use contains the latest available information.



Service Communication

SC-17-20-08

MODEL: Karma Revero

DATE: June 2017

TITLE: Radiator Fan Inspection

First Release

PARTS REQUIRED:

PART NUMBER	DESCRIPTION
N/A	N/A

SHOP SUPPLIES:

DESCRIPTION
N/A

SPECIAL TOOLS:

DESCRIPTION
N/A

CAUSAL PART:

PART NUMBER	DESCRIPTION
C131136300101	Fan and Shroud Assembly

LABOR CODES:

CODE	DESCRIPTION	TIME	DEFECT CODE
20-20-02-10	Fan and Shroud Inspection SC-17-20-08	0.8	20-20-02-14

SUBLET:

CODE	DESCRIPTION	AMOUNT
N/A		

WARRANTY DISPOSITION: This repair is covered under the New Vehicle Limited Warranty, in effect for five (5) years from the in-service date with no mileage limitation.

Karma Automotive Bulletins and service documents are intended for use by experienced and trained Technicians. If you lack the skills, tools, equipment and a suitable workshop for any procedure described in this document, we suggest you leave such repairs to a Karma retailer and service provider. See your service provider for advice on whether your vehicle may benefit from the information contained within this document. The information contained in the Karma Bulletin is accurate at the date of publication. However, Karma Automotive regularly updates technical information. Please check with your Karma Automotive Retailer and Karma Automotive service provider that the bulletin you intend to use contains the latest available information.