



# Technical Journal

TITLE:

**Front side door, water intrusion**

<b>REF NO:</b> TJ 32728.1.1	<b>ISSUING DEPARTMENT:</b> Technical Service	<b>CAR MARKET:</b> United States and Canada	
<b>PARTNER:</b> 3 US 7510 Volvo Car USA		<b>ISSUE DATE:</b> 2017-07-24	<b>STATUS DATE:</b> 2017-09-12
<b>FUNC GROUP:</b> 8414	<b>FUNC DESC:</b> Trim moulding at window	Page 1 of 8	

“Right first time in Time”

## Attachment

File Name	File Size
TJ 32728.pdf	1.5489 MB

## Vehicle Type

Type	Eng	Eng Desc	Sales	Body	Gear	Steer	Model Year	Plant	Chassis range	Struc Week Range
256							2016-9999		0000561-9999999	201505-999952

## CSC Customer Symptom Codes

Code	Description
R1	Doors/Water leakage/Front side door

## VST Operation Number

VST Operation Number	Description
98687-2	Seal door front 2 pcs install acc. TJ32728

## DTC Diagnostic Trouble Codes

## Text

### DESCRIPTION:

Water may accumulate on the front door sill it may come out of the lower edge of the front doors when opening.



**SERVICE:**

Perform attached service instruction. Verify that the problem is solved.

**VEHICLE REPORT:**

Yes, please submit a Vehicle Report if the service solution described in this TJ has no effect. Use concern area "Vehicle Report" and sub concern area "Support not needed", use function group 8414.

**To view TJ attachment continue to next page. This TJ has one attachment.**



## Volvo Car Customer Service

TJ 32728

<b>Title</b>	Weatherstrip, door window, front	<b>Page</b>	1 ( 6 )
<b>Action</b>	Product fix	<b>Operation number:</b>	98687-2

### Affected vehicles

Model year	Model
2016, 2017, 2018	XC90 (16-)

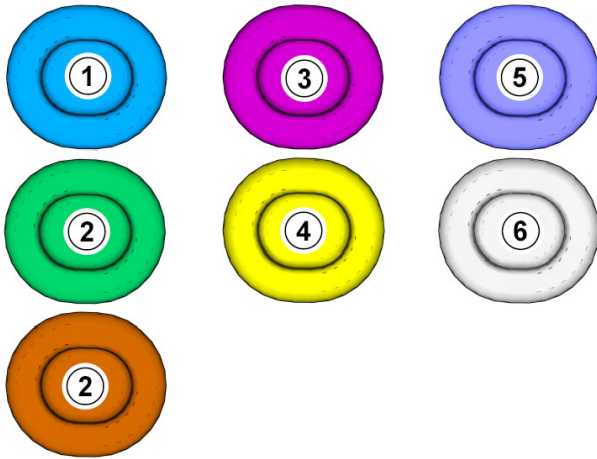
### Materials

Materials	Qty.	Part No.	Notes
Cleaning agent	0.1	1161721	Consumable;
Tape	1.0	31698754	
Clip	4.0	31402039	

### Special tools

Description	Part No.
Clip tool	999 7620

### Color symbols

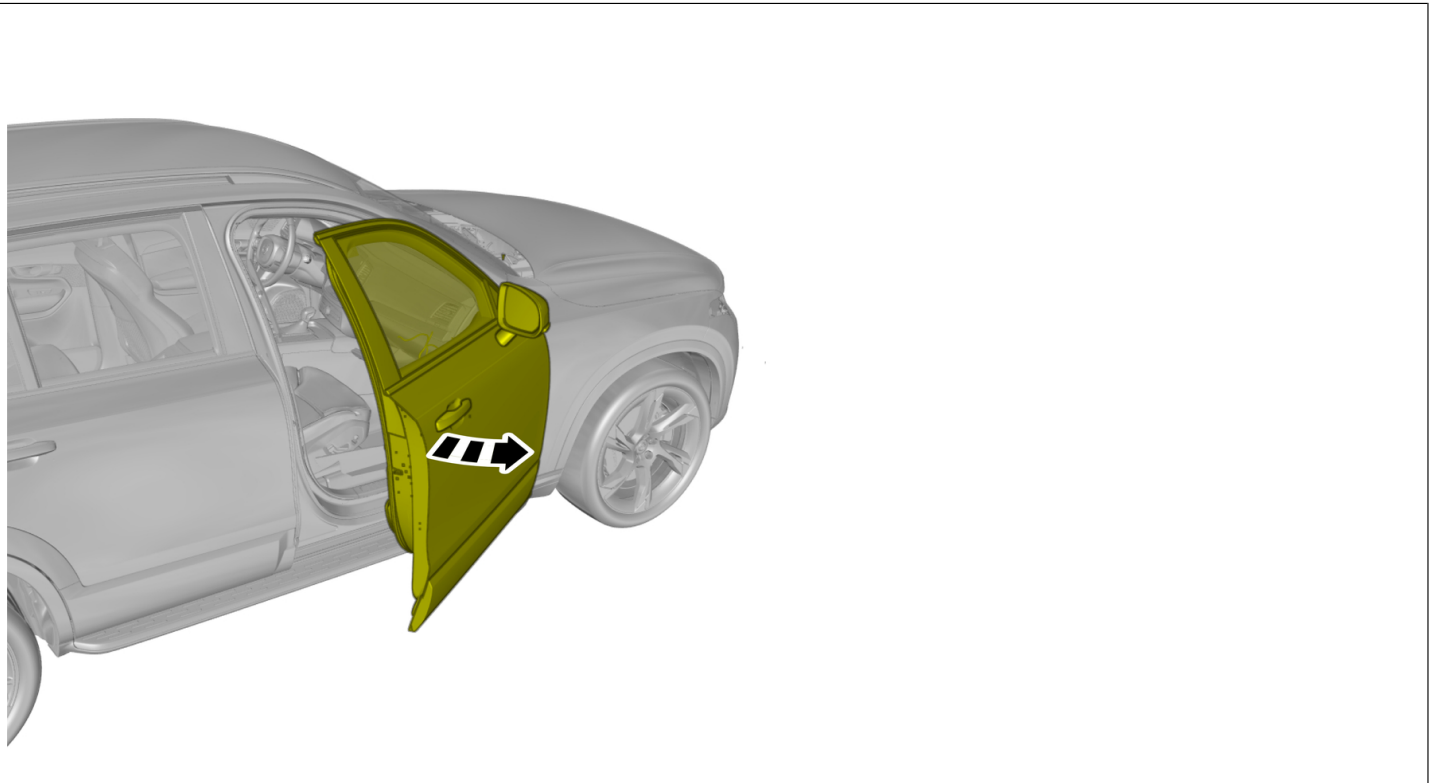


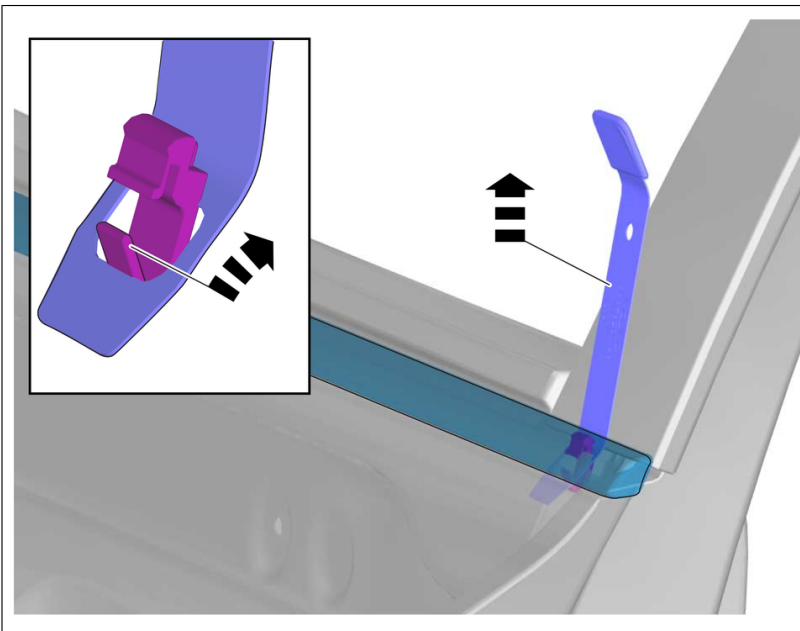
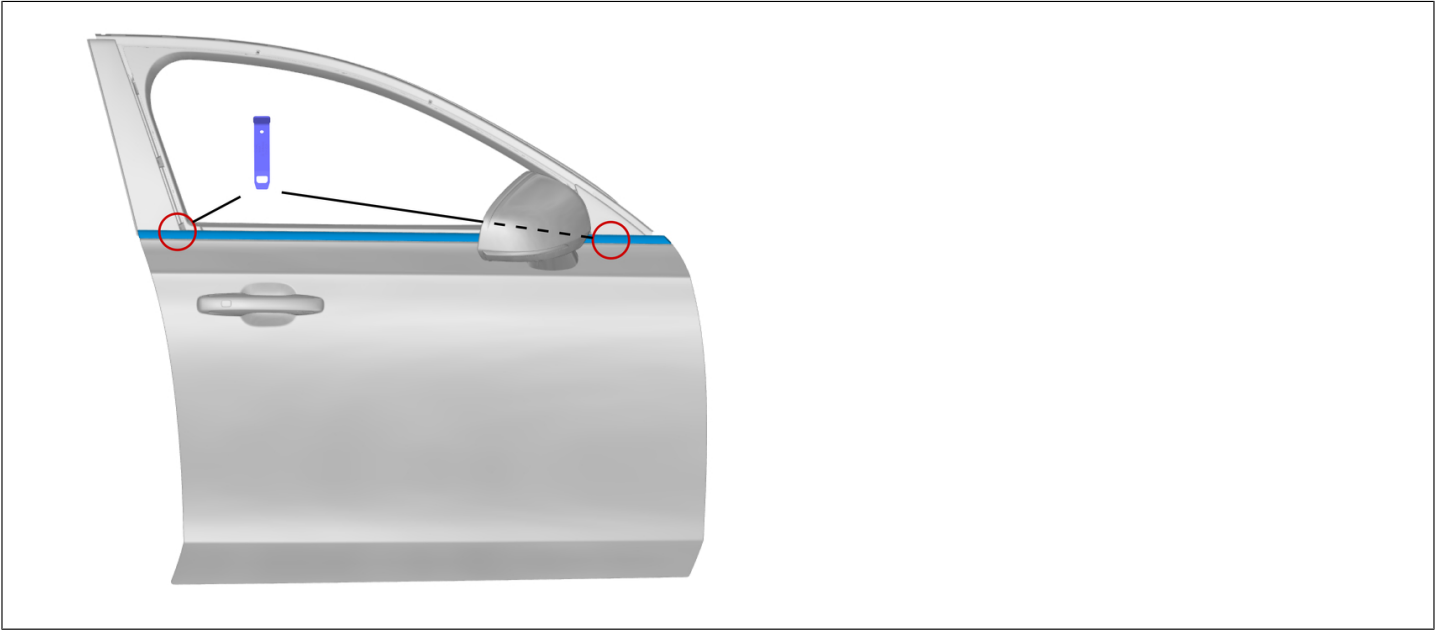
**Note! This colour chart displays (in colour print and electronic version) the importance of the different colours used in the images of the method steps.**

- 1 . Used for focused component, the component with which you will do something.
- 2 . Used as extra colors when you need to show or differentiate additional parts.
- 3 . Used for attachments that are to be removed/installed. May be screws, clips, connectors, etc.
- 4 . Used when the component is not fully removed from the vehicle but only hung to the side.
- 5 . Used for standard tools and special tools.
- 6 . Used as background color for vehicle components.

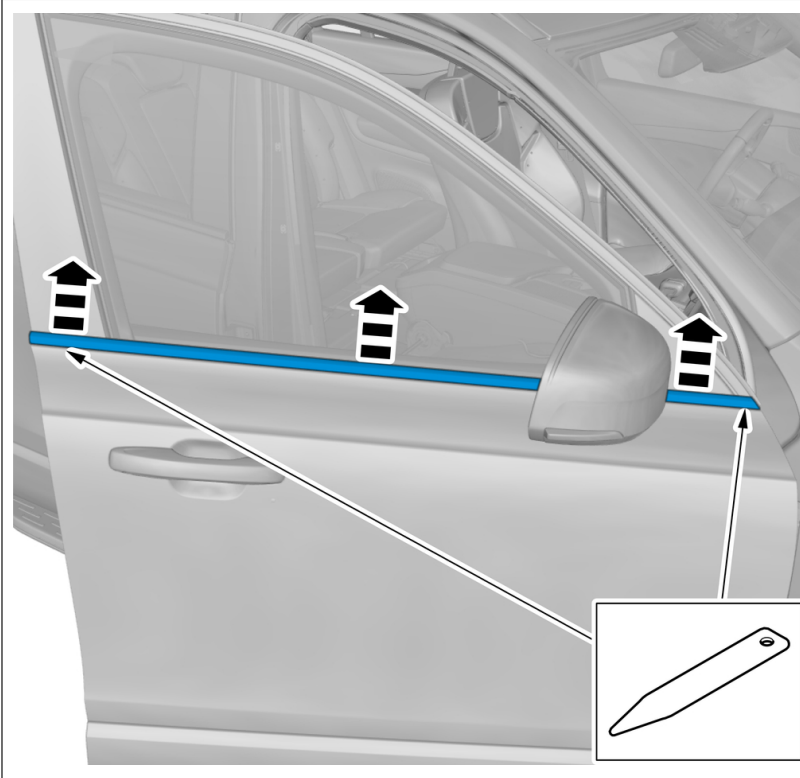
### Removal

Repeat all method steps for the other side.

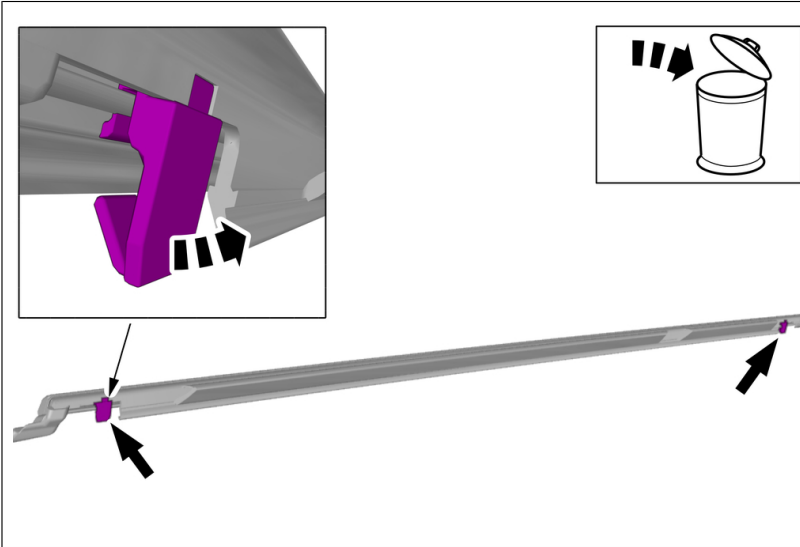




Special Tool: T9997620, Clip tool



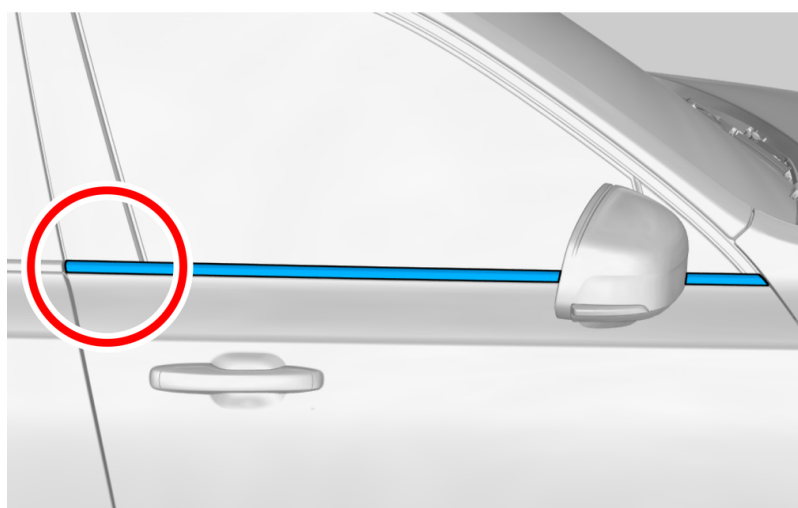
Remove the part carefully



The part is not to be reused.

**Installation**

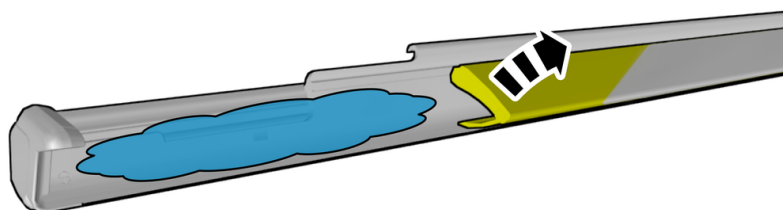
Repeat all method steps for the other side.



**Note! Orientation view**

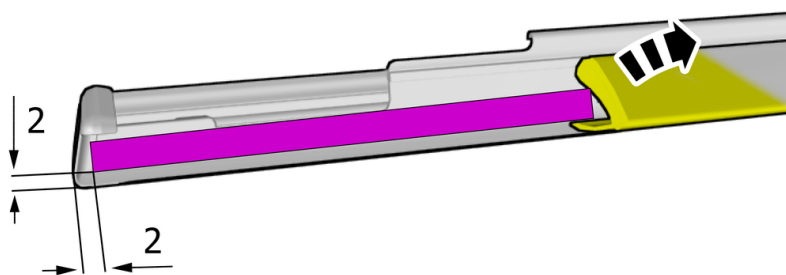
Clean the marked area.

**Use:** Cleaning agent , 1161721

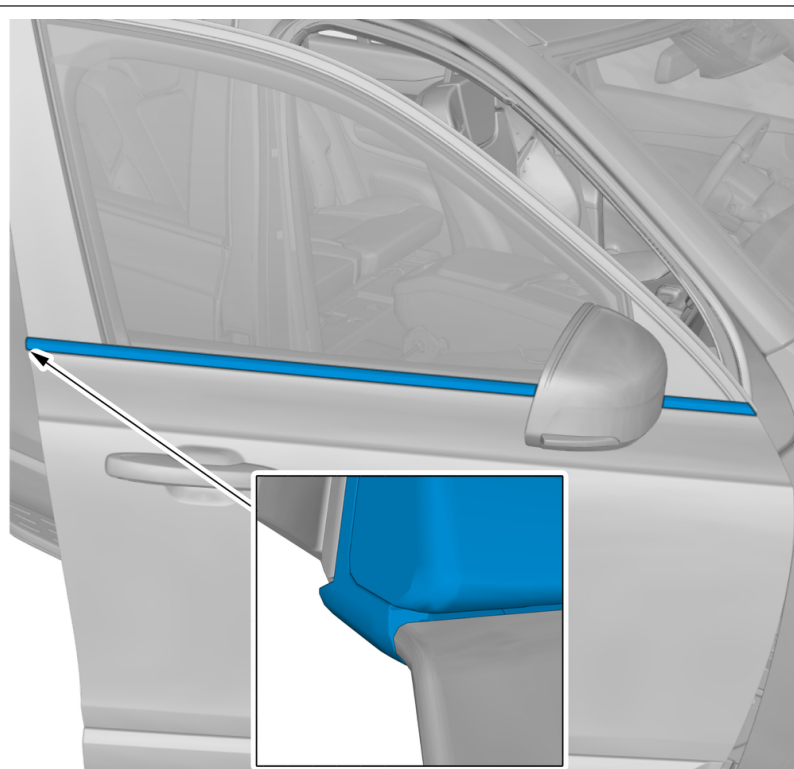
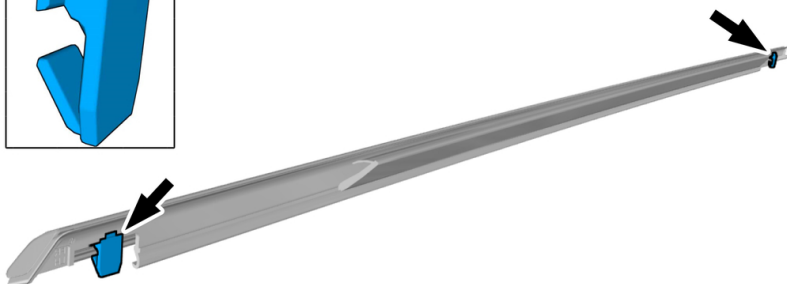
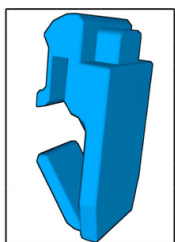


**mm**

Install tape 31698754.



Install the clip(s).



To install, reverse the removal procedure.