



Preliminary Information

PIT4745D Dent/Ripple Appearance Around Wheel Well Opening

Models

Brand:	Model:	Model Years:	VIN:		Engine:	Transmissions:
			from	to		
Chevrolet	Silverado	2007 - 2018	All	All	All	All
GMC	Sierra	2007 - 2018	All	All	All	All

Supersession Statement

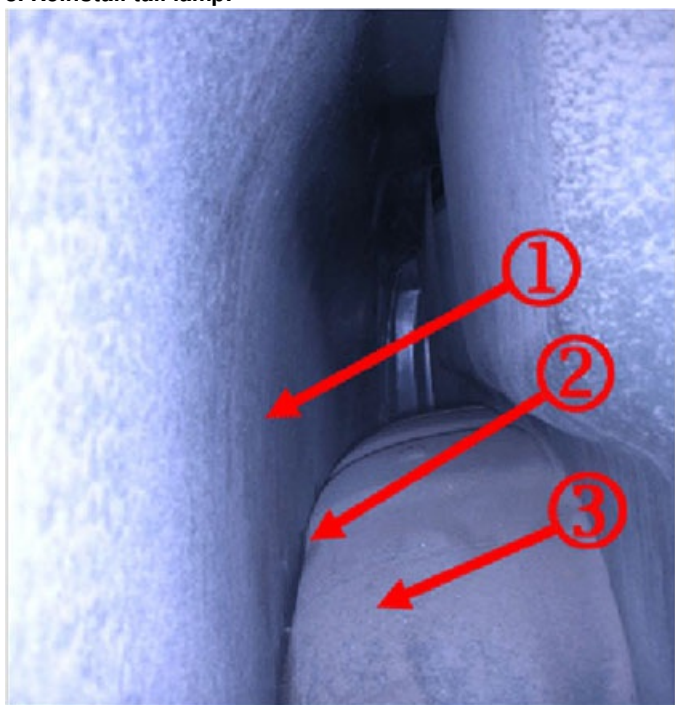
This PI was superseded to update Model Year and recommendation. Please discard PIT4745C.

Condition / Concern

Raised dents or ripple appearance in the side outer panel of the cargo box around the perimeter of the wheel house opening due to the lodging of stone/aggregate/debris between the wheelhouse, and the side outer panel.

Recommendations / Instructions

1. Remove the tail lamp to access the inner area of the side outer panel above the wheelhouse, see picture below.
2. Inspect for any stone/aggregate/debris. Remove as needed using a power washer and/or shop air blow gun.
3. The use of a body hammer (Snap on, cross peen, short curve, #BF608B, or comparable tool) to lightly tap the side outer panel may help to dislodge any stuck stone/aggregate/debris.
4. Access the rear of the inner wheelhouse area through the tail lamp cavity; and the front of the wheelhouse from under the vehicle, and coat the inner hem of the wheel house to side outer panel, with 3M Rust Fighter I, or equivalent, see latest version of [01-08-51-003](#).
5. Allow sufficient time for this to cure about 5-7 minutes, or according to manufacturer's instructions.
6. Apply several coats of Nox Rust X-121B undercoating or equivalent, from the front and rear.
7. Apply enough undercoating to prevent stone/aggregate/debris from getting between the inner wheel house and side outer panel.
8. Reinstall tail lamp.



1. Side outer panel
2. Area where stone/aggregate/debris can get stuck
3. Wheelhouse

Parts Information

Part Number	Description	Qty
Obtain from Daubert Chemical Company*	Nox Rust X-121B undercoating	As Needed
* Contact Daubert Chemical Company at www.daubertchemical.com or 800-914-0034 (Inside U.S.) or 708-496-7350 (Outside U.S.)		

Warranty Information

If these repairs are performed as a goodwill gesture, please refer to the latest version of bulletin 11-00-89-005 for warranty information on Exterior Labor Operations.



© 2016 General Motors. All Rights Reserved.