



## KNOCKING NOISE FROM THE ENGINE COMPARTMENT

### MODEL

|               |                      |                      |                   |
|---------------|----------------------|----------------------|-------------------|
| F54 (Clubman) | F55 (Hardtop 4 door) | F56 (Hardtop 2 door) | F57 (Convertible) |
|---------------|----------------------|----------------------|-------------------|

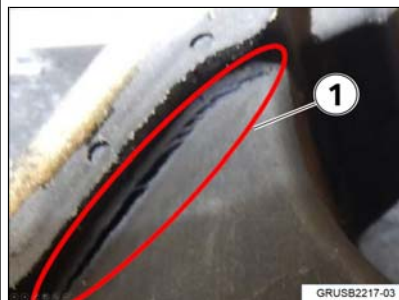
### SITUATION

There is a knocking noise coming from the engine compartment or the engine shakes during:

- Engine start
- When driving off from a stop
- When applying brakes

### CAUSE

Damage to the right side engine mount. The damage may be subtle (1st picture) or obvious (2nd picture).



### CORRECTION

Inspect the right engine mount and replace if necessary.

### PROCEDURE

For conditions that are similar to the situation described:

1. Inspect the engine mount on the right side of the engine.

**Is the vulcanization on the mount cracked, damaged or completely separated?**

**YES-** Replace the engine mount. Continue to step 2.

**NO** – Continue diagnosis with ISTA.

2. Check the I-Level of the vehicle's programming.

**Is the I-level F056-14-07-50X or lower?**

**YES-** Reprogram the vehicle with ISTA/P 3.61.0 or ISTA Next 4.04.2 or higher.

**NO** – Repair is complete. No reprogramming is necessary.

Note that ISTA/P will automatically reprogram and code all programmable control modules that do not have the latest software.

**Always connect a BMW approved battery charger/power supply (SI M04 08 09).**

For information on programming and coding with ISTA/P, refer to CenterNet / TIS / Technical Documentation / Diagnostics and Programming / Programming Documentation.

**PARTS INFORMATION**

Refer to EPC.

And:

**Bulk Material - Claiming Part Numbers**

|                 |                       |           |
|-----------------|-----------------------|-----------|
| 83 19 2 221 349 | R134a Gas (1 oz unit) | As needed |
|-----------------|-----------------------|-----------|

**WARRANTY INFORMATION**

Covered under the terms of the MINI New Passenger Car Limited Warranty.

|                     |                   |  |
|---------------------|-------------------|--|
| <b>Defect Code:</b> | <b>2211010100</b> |  |
|---------------------|-------------------|--|

**With Programming and Coding**

| <b>Labor Operation:</b> | <b>Labor Allowance:</b> | <b>Description:</b>   |
|-------------------------|-------------------------|---|
| 00 00 006               | Refer to KSD2           | Performing "vehicle test" (with vehicle diagnosis system – checking faults) (Main work)   |
| Or:                     |                         |   |
| 00 00 556               | Refer to KSD2           | Performing "vehicle test" (with vehicle diagnosis system – checking faults) (Plus work)   |
| And:                    |                         |   |
| 61 21 528               | Refer to KSD2           | Connect an approved battery charger/power supply (indicated in KSD 2 as Charging battery) |
|                         |                         |   |

|                    |                |   |
|--------------------|----------------|---|
| And, as necessary: |                |   |
| 22 99 000          | Work time (WT) | Diagnosing and inspecting the right engine mount  |
| And:               |                |   |
| 22 11 501          | Refer to KSD2  | Replacing the right engine mount (includes discharging, evacuating and filling air conditioner) |
| And:               |                |   |
| 61 00 730          | Refer to KSD2  | Programming/encoding control unit(s)  |

If you are using a Main labor code for another repair, use the Plus code labor operation 00 00 006 instead.

Or:

**Without Programming and Coding (Vehicle is already at the noted I-level or higher)**

| <b>Labor Operation:</b> | <b>Labor Allowance:</b> | <b>Description:</b>  |
|-------------------------|-------------------------|--|
| 22 11 001               | Refer to KSD2           | Replacing the right engine mount (includes discharging, evacuating and filling air conditioner) (Main) |
| Or:                     |                         |  |
| 22 11 501               | Refer to KSD2           | Replacing the right engine mount (includes discharging, evacuating and filling air conditioner) (Plus) |
| And, as necessary:      |                         |  |
| 22 99 000               | Work time (WT)          | Diagnosing and inspecting the right engine mount   |

If you are using a Main labor code for another repair, use the Plus code labor operation 22 11 501 instead.

Refer to KSD2 for the corresponding flat rate unit (FRU) allowances.

Work time labor operation code 22 99 000 is not considered a Main labor operation; however, it does require an individual punch time and an explanation on the repair order and in the claim comments section.

And, as necessary:

**Sublet – Bulk Materials**

|                      |  |   |
|----------------------|--|---|
| <b>Sublet Code 4</b> | See sublet reimbursement calculation below | Reimbursement for the repair-related bulk materials (excluding R134a), please, do not use these part numbers for claim submission |
|----------------------|--|---|

Sublet reimbursement calculation for claiming the used quantities of repair-related bulk materials (MINI part numbers) is at dealer net plus handling.

Enter this material cost in sublet and itemize the amount on the repair order in the claim comment section.

## Vehicle Programming and Coding

When ISTA/P automatically reprograms and codes all the vehicle's control modules that "currently do not have" the latest software and if one or more control module failures occur "during" this programming procedure:

- Please claim this "consequential" control module-related repair work under the defect code listed in this bulletin with the applicable KSD2/AIR labor operations.

## Other Repairs

Control module failures that occurred "prior" to performing this programming procedure:

- When "covered" under an applicable limited warranty, claim this control module-related repair work using the applicable defect code and labor operations in KSD2/AIR.

## Overlapping Labor Procedure – Other Repairs

If invoicing the KSD2 flat rate labor operation codes for other repair work results in overlapping labor, for those flat rate labor operations that are affected, you can now:

- Replace the stated KSD2 "FRU allowance" with a "reduced FRU value" to eliminate the overlapping labor.

For help in identifying the overlapping labor, please refer to the AIR FRU Plausibility Check (Overlapping Labor Tool) that is located in the AIR Client.

Eligible other repair work being claimed under a different defect code will require separate punch times.

On the repair order and in the claim comment section, please identify and itemize those labor operations being claimed with a "reduced FRU value."

Friday, June 16, 2017

[ Copyright ©2017 BMW of North America, Inc. ]