



SI B52 01 17
Seats

February 2017
Technical Service

RATTLING/CREAKING NOISE FROM REAR BENCH SEAT BACKREST

MODEL

F31 (3 Series Sport Wagon)	F34 (3 Series Gran Turismo)	F36 (4 Series Gran Coupe)
----------------------------	-----------------------------	---------------------------

Produced January 01, 2011 through December 01, 2016

SITUATION

Rear seat bench backrest makes creaking or rattling noise when driving on uneven surface.

CAUSE

Torsional stresses on vehicle body cause movement between seat back and latching mechanism. Friction among backrest locking mechanism components generates noise.

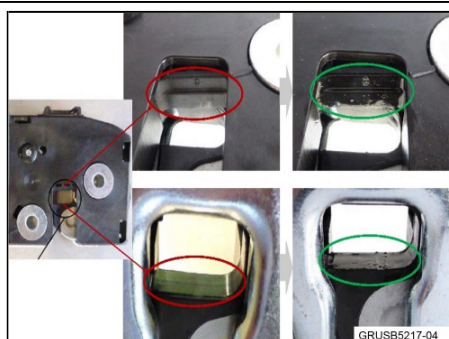
CORRECTION

Lubricate latching surfaces with Krytox GPL 105 penetrant lubricant. This lubricant has special viscosity and temperature qualities which makes it ideal for this repair. Using other lubricants may be ineffective in this repair.

PROCEDURE

For conditions that are similar to the situation described:

1. Unlatch and fold rear seat backrest forward.
2. With a size 8 bristle brush, spread a thin layer of Lubricant (Krytox GPL 105) over the spring lever and plastic covering of the rotary striker of the backrest lock where indicated in the accompanying before/after picture.



- Do not allow the seat to be returned to the upright, locked position for 24 hours to allow time for the lubricant to adequately penetrate the parts.

PARTS INFORMATION

Part Number	Description	Quantity
83 19 9 408 523	Special Lubricant, Krytox GPL 105 (30 ml)*	See below

* This lubricant can be sourced locally if needed.

WARRANTY INFORMATION

Covered under the terms of the BMW New Vehicle Limited Warranty for Passenger Cars and Light Trucks.

Defect Code:	5220153900	
Labor Operation:	Labor Allowance:	Description:
51 99 000	4 FRU	Lubricate latching surfaces (Main work)
Or:		
51 99 000	2 FRU	Lubricate latching surfaces (Plus work – Vehicle is already in the workshop)

And:

Sublet – Bulk Materials

Sublet Code 4	See sublet reimbursement calculation below	Reimbursement for the repair-related bulk materials (BMW part number, please do not use the part numbers for claim submission)
----------------------	--	--

Sublet reimbursement calculation for claiming the “used quantity” of repair-related bulk material (BMW part number) is at dealer net plus your center’s handling.

Enter this material cost in sublet and itemize the amount on the repair order and in claim comment section.

[Copyright ©2017 BMW of North America, Inc.]