

Torque Converter Flex Lock-up Shudder

Service Category Drivetrain

Section Automatic Transmission/Transaxle

Market USA

Toyota Supports
 ASE Certification 

Applicability

YEAR(S)	MODEL(S)	ADDITIONAL INFORMATION
2012 - 2014	Camry	VDS(s): BF1FK

SUPERSESSION NOTICE

The information contained in this bulletin supersedes SB No. T-SB-0034-14.

- The Parts Information section has been updated.

Service Bulletin No. T-SB-0034-14 is obsolete and any printed versions should be discarded. Be sure to review the entire content of this bulletin before proceeding.

Introduction

Some 2012 – 2014 model year Camry vehicles with a U760 transmission may exhibit a brief shudder intermittently while driving under light loads between approximately 25 and 50 mph. The torque converter and Engine Control Module/ECM (SAE term: Powertrain Control Module/PCM) logic has been modified to reduce the possibility of this condition occurring. Follow the Repair Procedure below to address this condition.

Production Change Information

This bulletin applies to vehicles produced **BEFORE** the Production Change Effective VINs shown below.

MODEL	PLANT	LINE	DRIVETRAIN	PRODUCTION CHANGE EFFECTIVE VIN
Camry	TMMK	1	U760E	4T1BF1FK#EU435094
		2		4T1BF1FK#EU841977
	SIA	–		4T4BF1FK#ER425173

Torque Converter Flex Lock-up Shudder

Warranty Information

OP CODE	DESCRIPTION	TIME	OFF	T1	T2
TC1703	R & R Torque Converter Clutch and Reprogram ECM (PCM)	5.6	32000-06040 32000-06050 32000-33141 32000-73011	9B	50

APPLICABLE WARRANTY

- This repair is covered under the Toyota Powertrain Warranty. This warranty is in effect for 60 months or 60,000 miles, whichever occurs first, from the vehicle's in-service date.
- Warranty application is limited to occurrence of the specified condition described in this bulletin.

Parts Information

PART NUMBER		PART NAME	QTY
PREVIOUS	NEW		
32000-06040 32000-06050 32000-33141 32000-73011	04004-48106	Converter Assy Kit, Torque	1
00289-ATFWS		ATF WS	5.6 U.S. qts (5.3 liters)
90080-30075		Ring, O (For Automatic Transmission Case Plug)	1
17451-0V020		Gasket, Exhaust Pipe No.1	1
90917-06078		Gasket, Exhaust Pipe No. 2	1
90521-78002		Ring, Hole Snap (For Drive Shaft Bearing Bracket)	1
90119-10461		Bolt (For Drive Shaft Bearing Bracket Setting No. 1)	1
43425-07040		Ring, Hole Snap (For Front Drive Shaft LH)	1
90080-17238		Axle Hub Nut	2
90468-14016		Clip	1

Torque Converter Flex Lock-up Shudder

Parts Information (Continued)

EMISSION SPEC	GRADE	PART NUMBER		PART NAME	QTY		
		PREVIOUS	NEW				
ULEV	Base, LE, XLE	89661-06K60 89661-06K61 89661-06K62 89661-06K63 89661-06K64	89661-06K65	Computer, Engine Control (ECM/PCM)	-		
	SE	89661-06K70 89661-06K71 89661-06K72 89661-06K73 89661-06K74	89661-06K75				
PZEV	Base, LE, XLE	89661-06K80 89661-06K81 89661-06K82 89661-06K83 89661-06K84	89661-06K85				
	SE	89661-06K90 89661-06K91 89661-06K92 89661-06K93 89661-06K94	89661-06K95				
-	-	00451-00001-LBL				Authorized Modification Labels	1

NOTE

- The ECM (PCM) should NOT be replaced as part of the Repair Procedure.
- Authorized Modification Labels may be ordered in packages of 25 from the Materials Distribution Center (MDC) through – *Dealer Daily – Parts – Dealer Support Materials Orders.*

Torque Converter Flex Lock-up Shudder

Required Tools & Equipment

REQUIRED EQUIPMENT	SUPPLIER	PART NUMBER	QTY
Techstream 2.0*	ADE	TS2UNIT	1
Techstream Lite		TSLITEPDLR01	
Techstream Lite (Green Cable)		TSLP2DLR01	

* Essential SST.

NOTE

- Only ONE of the Techstream units listed above is required.
- Software version 12.20.024 or later is required.
- Additional Techstream units may be ordered by calling Approved Dealer Equipment (ADE) at 1-800-368-6787.
- Use Techstream or an approved J2534 interface to perform flash reprogramming updates. Visit techinfo.toyota.com for more information regarding J2534 reprogramming.

SPECIAL SERVICE TOOLS (SST)	PART NUMBER	QTY
GR8 Battery Diagnostic Station*	00002-MCGR8	1
Transmission Fill System*	00002-11100-02	1

NOTE

Additional SSTs may be ordered by calling 1-800-933-8335.

* Essential SST.

Calibration Information

EMISSION SPEC	GRADE	ECM (PCM)	CALIBRATION ID	
			PREVIOUS	NEW
ULEV	Base, LE, XLE	Main	30679000	30679500 / 50611500
			30679100	
			30679200	
			30679300	
			30679400	
		Sub	50611000	
			50611100	
			50611200	
			50611300	
			50611400	

Torque Converter Flex Lock-up Shudder

Calibration Information (Continued)

EMISSION SPEC	GRADE	ECM (PCM)	CALIBRATION ID	
			PREVIOUS	NEW
PZEV	Base, LE, XLE	Main	30680000 30680100 30680200 30680300 30680400	30680500 / 50611500
		Sub	50611000 50611100 50611200 50611300 50611400	
ULEV	SE	Main	306A3000 306A3100 306A3200 306A3300 306A3400	306A3500 / 50612500
		Sub	50612000 50612100 50612200 50612300 50612400	
PZEV	SE	Main	306A4000 306A4100 306A4200 306A4300 306A4400	306A4500 / 50612500
		Sub	50612000 50612100 50612200 50612300 50612400	

Torque Converter Flex Lock-up Shudder

Repair Procedure

1. With the vehicle at normal operating temperature, confirm the condition described in the Introduction section.
Is there a brief shudder intermittently present while driving under a light load between 25 and 50 mph? Typically, the condition will be most noticeable prior to an upshift.
 - **YES** — Continue to step 2.
 - **NO** — This bulletin does NOT apply. Continue diagnosis using the applicable Repair Manual.

NOTICE

Be sure to follow the procedure below in the order provided to prevent contamination of previously cleaned parts.

2. Drain the ATF from the transaxle by removing the drain plug.
Refer to the Technical Information System (TIS), applicable model and model year Repair Manual:
 - [2012](#) / [2013](#) / [2014](#) Camry:
Drivetrain – Automatic Transmission/Transaxle – “U760E Automatic Transmission / Transaxle: Automatic Transaxle Fluid: Replacement”
3. Remove and replace the torque converter.

NOTE

Refer to Service Bulletin [T-SB-0351-10](#), “*Repair Manual Supplement: Transaxle Replacement.*”

4. With the transaxle installed in the vehicle, remove the transaxle oil pan.
Refer to TIS, applicable model and model year Repair Manual:
 - [2012](#) / [2013](#) / [2014](#) Camry:
Drivetrain – Automatic Transmission/Transaxle – “U760E Automatic Transmission / Transaxle: Valve Body Assembly: Removal”
5. Remove and discard the two oil pan magnets and clean the inside of the oil pan by wiping it off with a clean cloth ONLY.

NOTICE

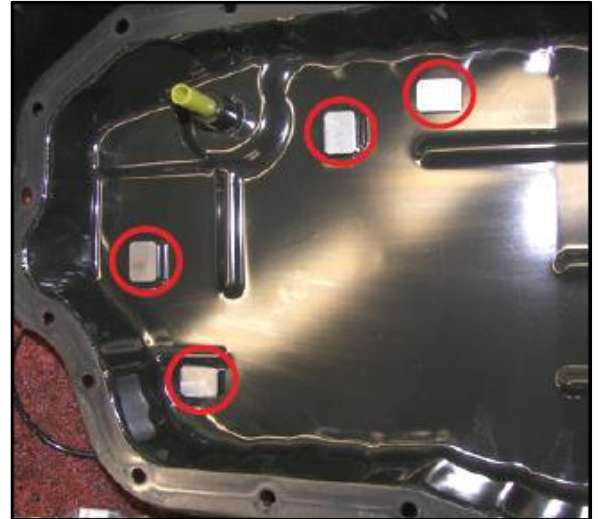
Do NOT use ANY chemical cleaners to clean the inside of the oil pan.

Torque Converter Flex Lock-up Shudder

Repair Procedure (Continued)

6. Install four NEW magnets in the locations shown.

Figure 1. Magnet Installation Locations



7. Reinstall the oil pan using a NEW oil pan gasket.
Refer to TIS, applicable model and model year Repair Manual:
 - [2012](#) / [2013](#) / [2014](#) Camry:
Drivetrain – Automatic Transmission/Transaxle – “U760E Automatic Transmission / Transaxle: Valve Body Assembly: Installation”
8. Reinstall the drain plug using a NEW drain plug gasket and refill the transaxle with ATF.
Refer to TIS, applicable model and model year Repair Manual:
 - [2012](#) / [2013](#) / [2014](#) Camry:
Drivetrain – Automatic Transmission/Transaxle – “U760E Automatic Transmission / Transaxle: Automatic Transaxle Fluid: Replacement”

Torque Converter Flex Lock-up Shudder

Repair Procedure (Continued)

9. Check for the Authorized Modification Label affixed to the vehicle in the location shown below. Confirm if the ECM (PCM) calibration has been updated. Is the calibration ID listed the latest ECM (PCM) calibration?
 - **YES** — Go to step 12.
 - **NO** — Continue to step 10.

Figure 2. Location of Authorized Modification Label on 2012 – 2014 Camry



1	Replacement ECM (PCM) Part Number (i.e., 04004-48106)
2	New Calibration ID(s)(i.e., 30679500)
3	Dealer Code

4	Date Completed
5	This SB Number

Torque Converter Flex Lock-up Shudder

Repair Procedure (Continued)

10. Flash reprogram the ECM (PCM).

NOTE

- The GR8 Battery Diagnostic Station **MUST** be used in Power Supply Mode to maintain battery voltage at 13.5V while flash reprogramming the vehicle.
- For details on how to use the GR8 Battery Diagnostic Station, refer to the "[GR8 Instruction Manual](#)" located on TIS, *Diagnostics – Tools & Equipment – Battery Diagnostics*.

Follow the procedures outlined in Service Bulletin No. [T-SB-0134-16](#), "Techstream ECU Flash Reprogramming Procedure," and flash the ECM (PCM) with the NEW calibration file update.

11. Prepare and install the Authorized Modification Label.
 - A. Using a permanent marker, enter the following information on the label:
 - ECM part number [Refer to the **Parts Information** section for the **NEW PART NUMBER**]
 - Calibration ID(s) [Refer to the **Calibration Information** section for the **NEW CALIBRATION ID**]
 - Dealer Code
 - Repair Date
 - Change Authority [**This bulletin number**]
 - B. Install the Authorized Modification Label on the vehicle at the location shown in Figure 2. The Authorized Modification Label is available through the MDC, P/N 00451-00001-LBL
12. Perform the Techstream ECT Reset Memory Utility and test drive to confirm the repair.