

THIS LSC EXPIRES ON OCTOBER 31, 2017

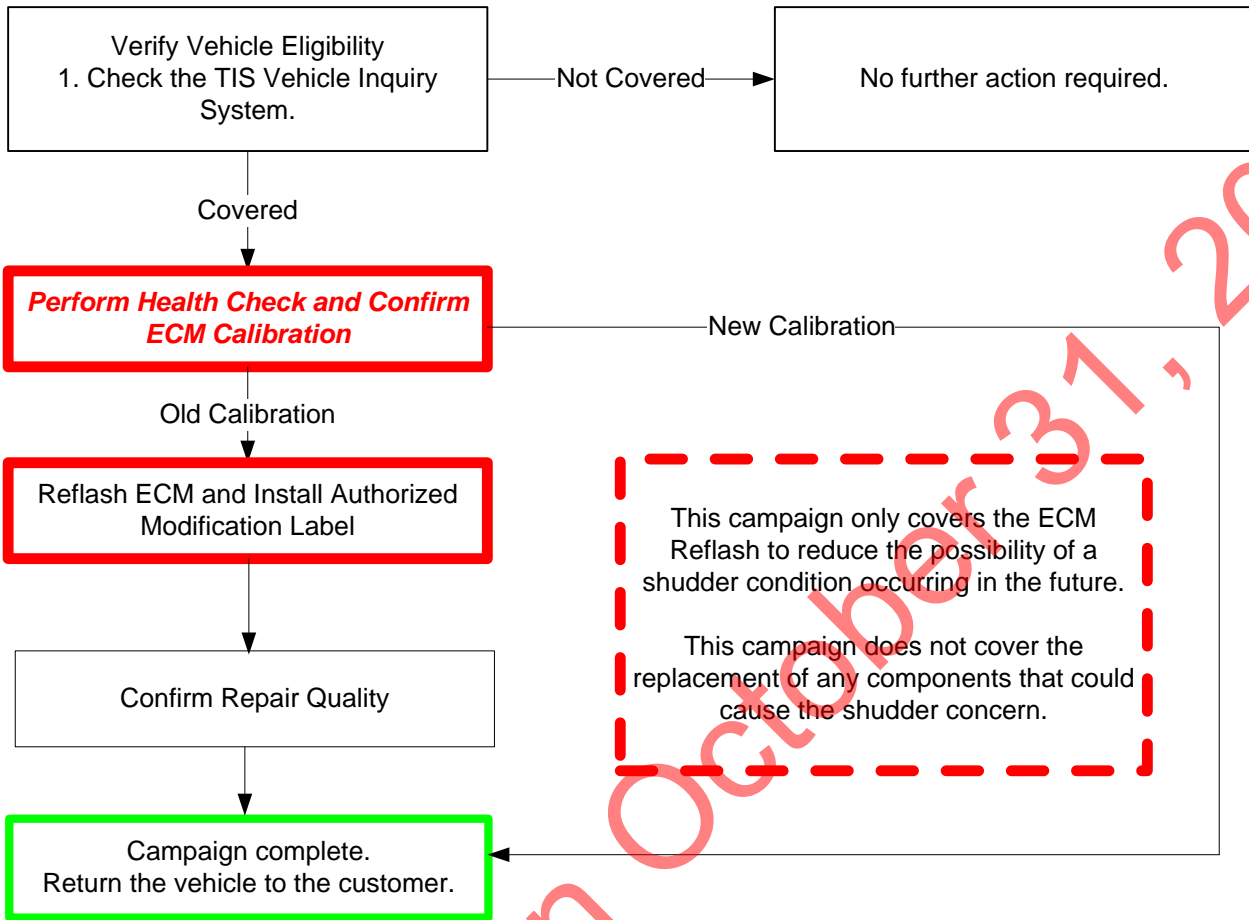
**TECHNICAL INSTRUCTIONS
FOR
LIMITED SERVICE CAMPAIGN E03
U760 ATM ECM SOFTWARE UPDATE
CERTAIN
2012 - 2014 MY CAMRY**

All dealership associates involved in the LSC process are required to successfully complete E-Learning course SC13A. To ensure that all vehicles have the repair performed correctly; technicians performing this LSC repair are required to currently hold at least one of the following certifications levels:

- Toyota Certified (any classifications)
- Toyota Expert (any classifications)
- Master
- Master Diagnostic Technicians

THIS LSC EXPIRES ON OCTOBER 31, 2017

I. OPERATION FLOW CHART



E03 Expired on October 31, 2017

THIS LSC EXPIRES ON OCTOBER 31, 2017

IDENTIFICATION OF AFFECTED VEHICLES

NOTE:

- Check the TIS Vehicle Inquiry System to confirm the VIN is involved in this LSC and that the campaign has not already been completed prior to dealer shipment or by another dealer.
- TMS warranty will not reimburse dealers for repairs conducted on vehicles that are not affected or was completed by another dealer.**

II. PREPARATION

A. PARTS

Part Number	Part Description	Quantity
00451-00001-LBL*	Authorized Modification Label	1

*Labels can be ordered in packs of 25 from the MDC through the Dealer Daily Website

B. TOOLS, SUPPLIES & EQUIPMENT

- Standard Hand Tools
- Techstream 2.0 / TIS Techstream / Techstream Lite
- GR8 Battery Diagnostic Station
- T-SB-0034-14

III. BACKGROUND

Some 2012 – 2014 Camry vehicles equipped with a U760 transmission may intermittently exhibit a brief shudder, while driving under light loads at approximately 25 to 50 mph. The torque converter and Engine Control Module/ECM (SAE term: Powertrain Control Module/PCM) logic have been modified to reduce the possibility of this condition occurring.

E03 Expired on October 31, 2017

THIS LSC EXPIRES ON OCTOBER 31, 2017

IV. ECM CALIBRATION ID VERIFICATION AND DTC CHECK

A. CONFIRM ECM CALIBRATION ID

- 1) Perform a health check
- 2) Confirm the calibration ID in the ECM.

EMISSION SPEC	GRADE	ECM (CPU)	CALIBRATION	
			PREVIOUS	NEW
ULEV	Base, LE, XLE	Main	30679000	30679400
			30679100	
Sub		30679200	50611400	
		30679300		
PZEV	Base, LE, XLE	Main	50611000	30680400
			50611100	
		Sub	50611200	50611400
			50611300	
ULEV	SE	Main	30680000	306A3400
			30680100	
Sub		30680200	50612400	
		30680300		
PZEV	SE	Main	50611000	306A4400
			50611100	
		Sub	50611200	50612400
			50611300	
PZEV	SE	Main	306A3000	306A4400
			306A3100	
		Sub	306A3200	50612400
			306A3300	
PZEV	SE	Main	50612000	50612400
			50612100	
		Sub	50612200	50612400
			50612300	



- If the ECM has already been calibrated with the new calibration the campaign is complete.

THIS LSC EXPIRES ON OCTOBER 31, 2017

V. ECM REFLASH PROCEDURE

A. CONNECT THE GR8

- a) Set the GR8 to Power Supply Mode to help maintain 13.5 volts during ECM reprogramming.



- A battery charger set to power supply mode **MUST** be used during reprogramming.
- ECM damage may occur if the correct battery charger setting is not used.

B. REFLASH THE ECM

- a) Click yes on the health check results screen, or follow the links on the table above to begin the reflash process.

NOTE:

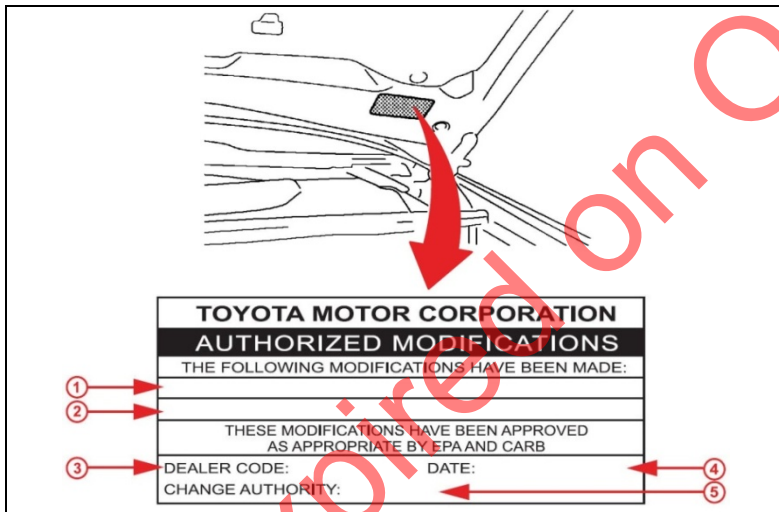
- For general reprogramming procedures, refer to [T-SB-0012-13](#).
- Confirm the latest version of Techstream software is being used.



- If the Techstream does not have sufficient battery power the reflash will fail.
- Confirm the DLC3 cable is in good condition before attempting reflash.

C. ATTACH THE AUTHORIZED VEHICLE MODIFICATION LABEL

- a) Fill out the label.
- b) Affix the label to the under-side of the hood.



1	ECM P/N
2	New Calibration ID
3	Dealer Code
4	Date Completed
5	Campaign Code (E03)

1. CHECK FOR DTCs

Note: This campaign only covers the ECM Reflash to reduce the possibility of a shudder condition occurring in the future.

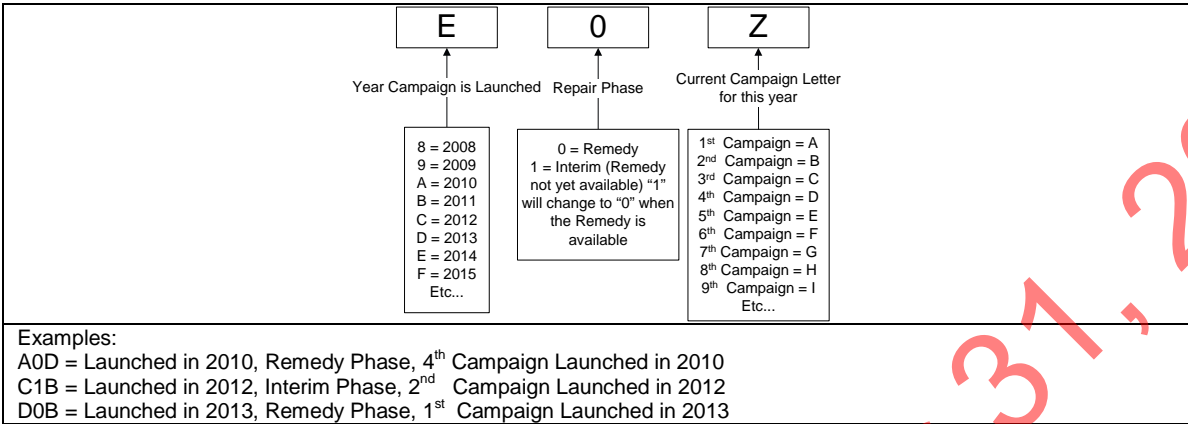
◀ VERIFY REPAIR QUALITY ▶

- Confirm the ECM Calibration has been updated successfully
- Confirm *that an* Authorized Modification Label has been installed
- If you have any questions regarding this LSC, please contact your regional representative

THIS LSC EXPIRES ON OCTOBER 31, 2017

VI. APPENDIX

A. CAMPAIGN DESIGNATION DECODER



E03 Expired on October 31, 2017