

Diesel Exhaust Fluid (DEF) Pressure Line Disconnected at the Doser Connection **49-019**

Constellation
> 4900 Models
> 4700 Models
6900 Models

4800 Models
> 5700 Models
5900 Models
Heritage

**Western Star Service
Bulletin**

General Information

On some GHG14 and GHG17 vehicles equipped with a Detroit one-box aftertreatment system (ATS), the DEF pressure line may be pushed off the doser connection by frozen DEF in extreme cold climates. See Fig. 1 . Going forward, vehicles equipped with a Detroit Diesel one-box ATS will have a zip tie installed through the doser mounting bracket and around the DEF pressure line.

Installing the zip tie (part number 23-09796-509) prevents the DEF pressure line from being pushed off. The zip tie can be installed as a preventive measure or can be installed after the DEF line is disconnected, without replacing the DEF line.

Procedure

1. Park the vehicle on a level surface, shut down the engine, and set the parking brake. Chock the tires.
2. Locate the DEF pressure line on the ATS.
3. Install a zip tie on the DEF pressure line and doser as shown in Fig. 2 .



Fig. 1, DEF Line Broken

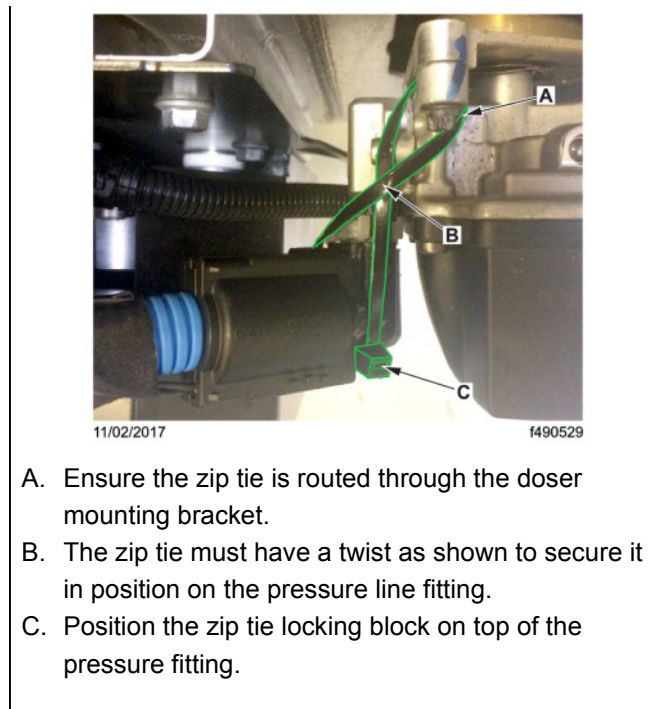


Fig. 2, Installing a Zip Tie on the DEF Pressure Line and Doser

Warranty

This procedure is warrantable only if the described condition exists and the repair is performed within the applicable base or extended coverage warranty period. If a failure is not found, this procedure is considered preventive and warranty does not apply.

Normal warranty applies. See Table 1 for OWL VMRS codes and labor allowance information. Enter this service bulletin number in the *Service Bulletin #* field.

OWL VMRS Codes and Labor Allowance					
Primary Failed Part	Component Code	Cause Code	SRT Code	Description	Time: Hours
04-31885-220	043-007-087	24	23W-5015A	Line, DEF, Doser Connection, Repair, SB 49-019	0.3

Table 1, OWL VMRS Codes and Labor Allowance

Western Star Service Bulletin , 11/28/2017