



# Service Bulletin

File in Section: -

Bulletin No.: 15-NA-051

Date: November, 2017

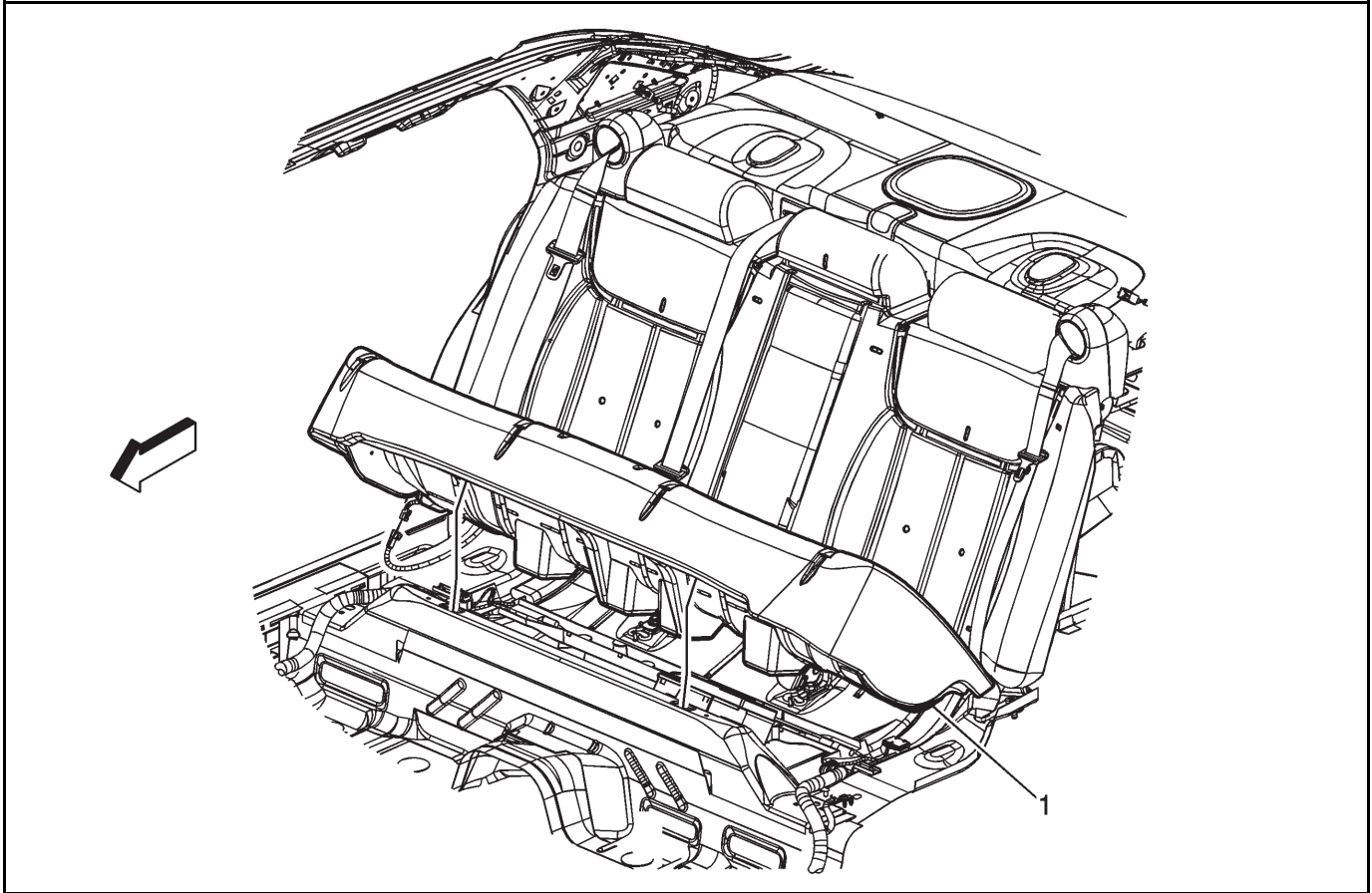
## TECHNICAL

**Subject:** Vehicle Stalls While Driving, No Start/Stalling

Brand:	Model:	Model Year:		VIN:		Engine:	Transmission:
		from	to	from	to		
Buick	Lucerne	2008	2011			All	All
Cadillac	DTS	2009	2011				

<b>Involved Region or Country</b>	North America and N.A. Export Regions
<b>Condition</b>	Some customers may comment on the following conditions: <ul style="list-style-type: none"><li>• Vehicle stalls while driving</li><li>• No-start or stalling</li></ul>
<b>Cause</b>	The rear seat foam bottom and seat mounting bracket may come into contact with the Rear Electrical Center (REC) (Rear Junction Block) cover. <ul style="list-style-type: none"><li>• The contact/interface results in varying amounts of deflection of the Fuel Pump Relay (FPR), causing potential wear of the male terminals on the FPR.</li></ul>
<b>Correction</b>	If the vehicle exhibits any of the above conditions, the REC must be inspected for any signs of contact and/or damage to the FPR, fuse, REC and REC X1 electrical connector.

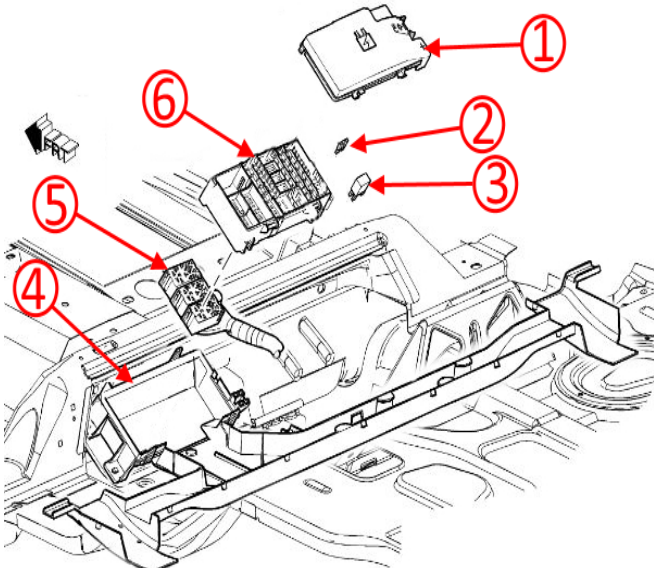
## Service Procedure



1572099

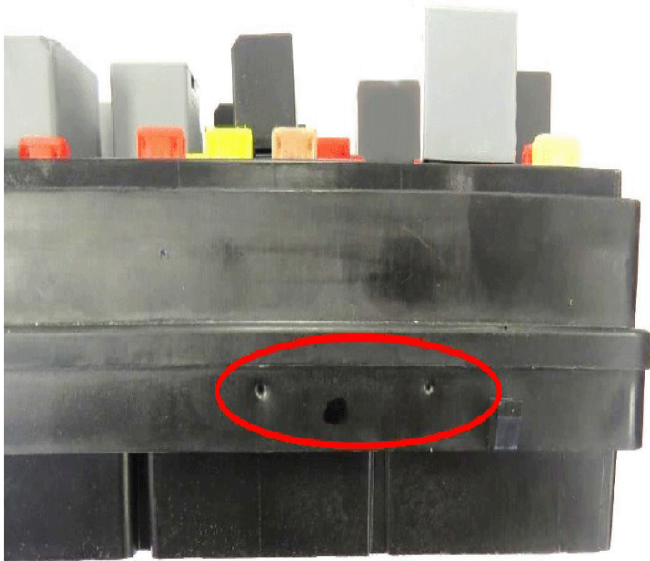
1. Remove the rear seat bottom cushion (1).
2. Disconnect the negative battery cable.

5. Remove and inspect the fuel pump relay (3) for any signs of contact, damage and/or burn marks.
6. Remove and inspect the fuel pump fuse (2) for any signs of damage and/or burn marks.
7. Separate the upper REC (6) from the lower housing (4) by pressing the 4 locking tabs.
8. Inspect the REC for the following concerns:



4871207

3. Remove the REC cover (1).
4. Inspect the cover for signs of contact with the fuel pump relay.



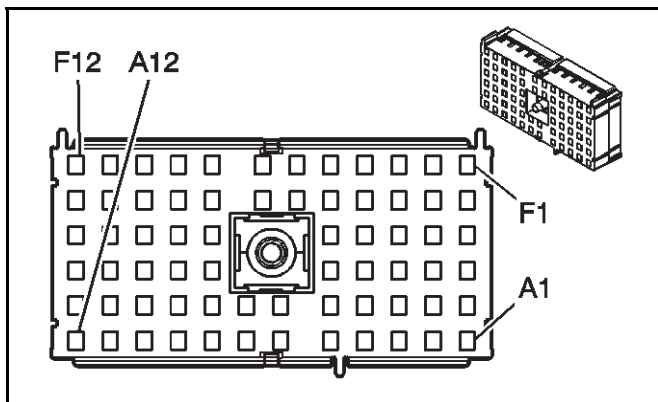
4871370

- Contact marks from the seat brackets. (Lucerne Only)



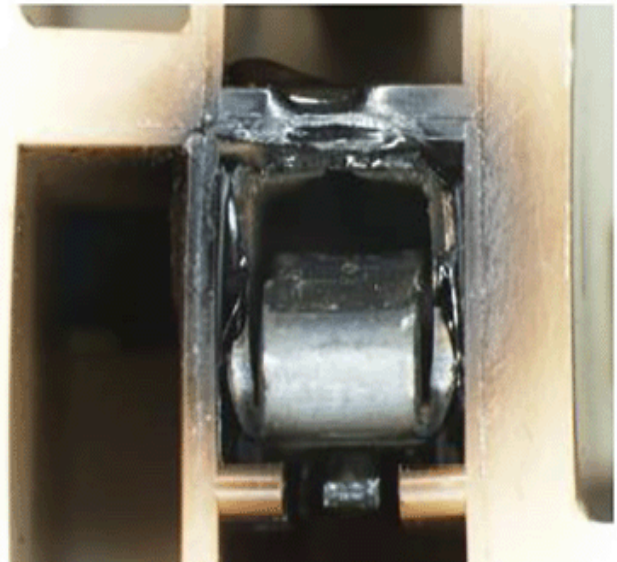
4871945

- Damaged and/or burnt X1 electrical connector.
9. Remove the X1 connector from the REC.



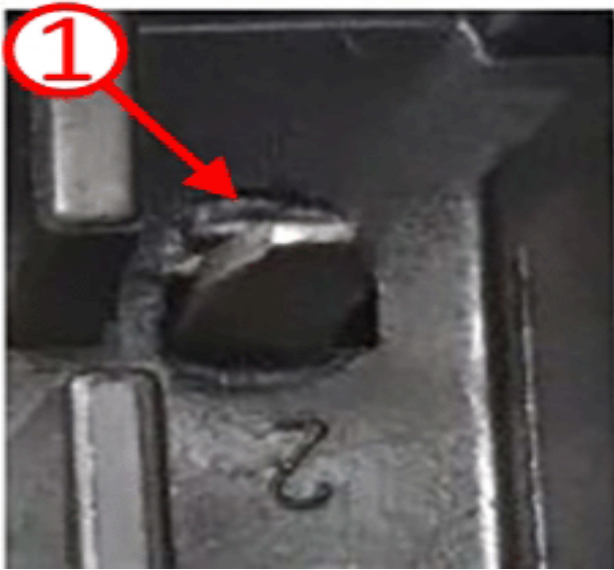
280787

- Burnt wires or terminals at the F1 cavity.



4871417

10. Inspect the connector for any damaged or burnt terminals.

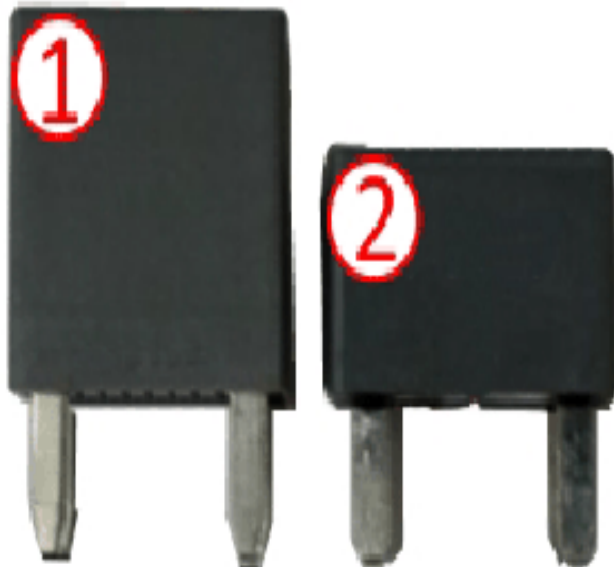


4871373

11. Inspect for any signs of warping or disfigurement caused by heat to the junction block (1).

If no damage is found, **Do Not** replace the fuse block and refer to SI for further diagnostics.

If damage was found, proceed with repair.



4871287

If no damage is found at the REC or the F1 cavity:

- Remove FPR relay (1) and discard.
- Install a low profile fuel pump relay (2).
- Trim seat brackets. (Lucerne Only)
- Re-position REC. (DTS Only)

If any damage is found at the REC and not at the F1 cavity:

- Replace the REC only.
- Trim seat brackets. (Lucerne Only)
- Re-position REC. (DTS Only)

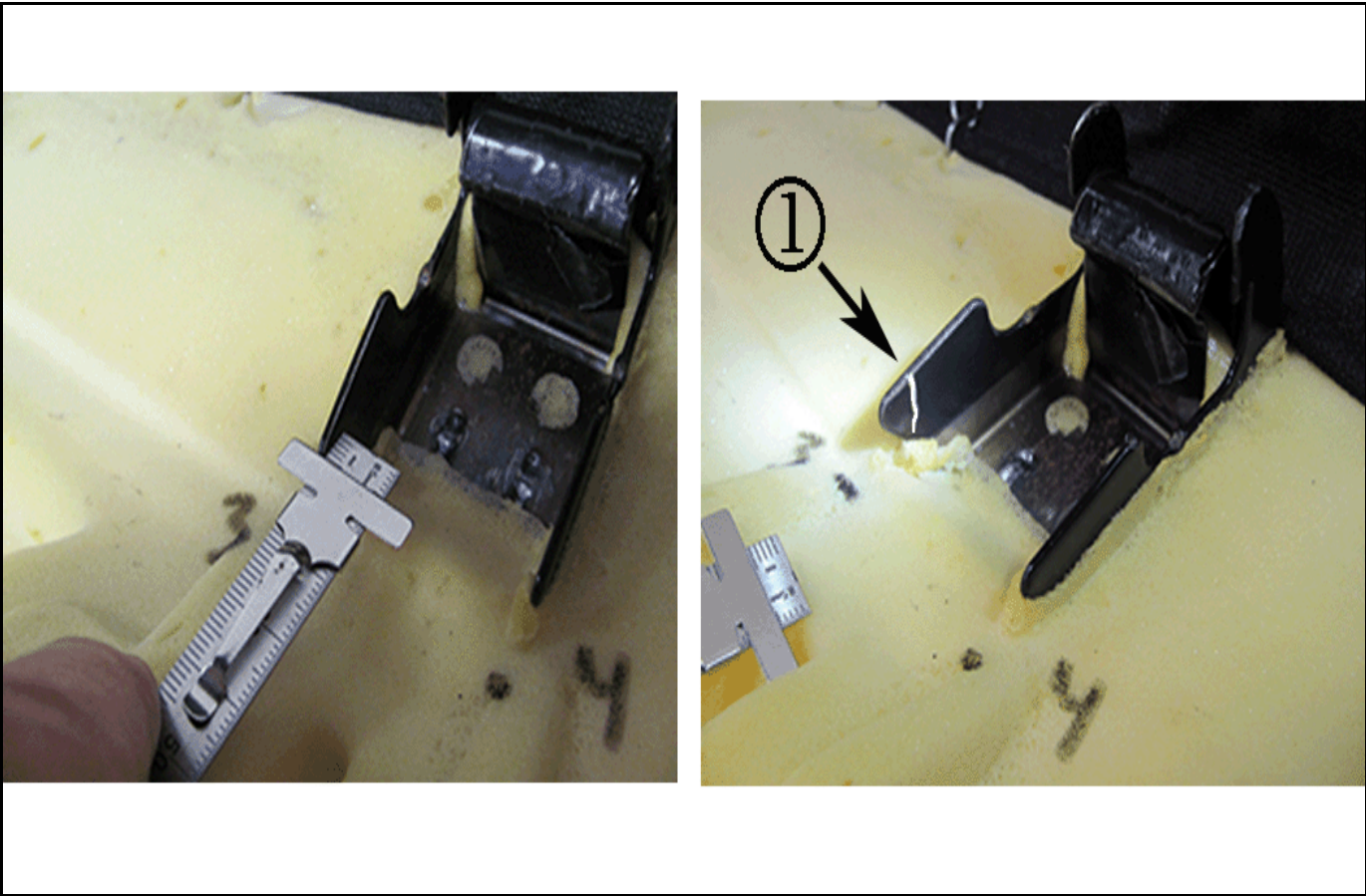
⇒ If replacing the REC, it may have the taller fuel pump relay installed from the factory. The tall relay must be removed and replaced with a short relay.

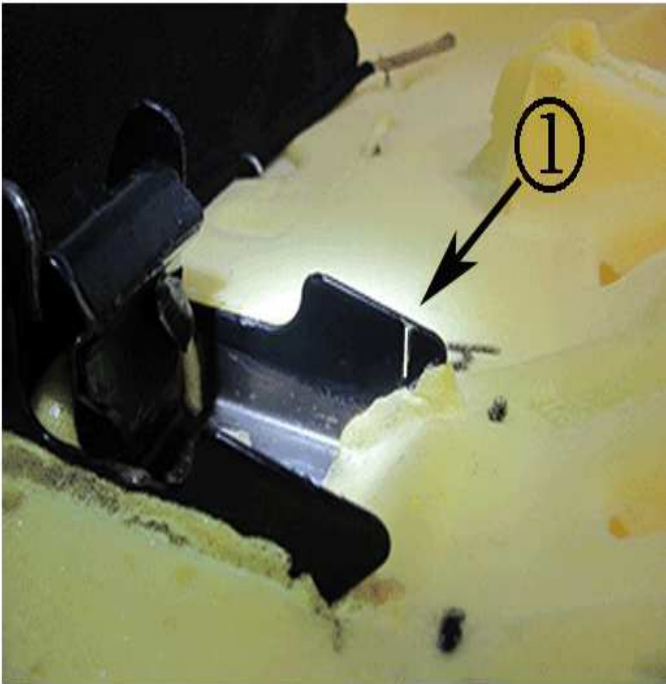
If any damage is found at the REC and at F1 cavity:

- Replace the REC.
- Repair the wire terminal at the F1 cavity.
- If required, replace the X1 connector.
- Trim seat brackets. (Lucerne Only)
- Re-position REC. (DTS Only)

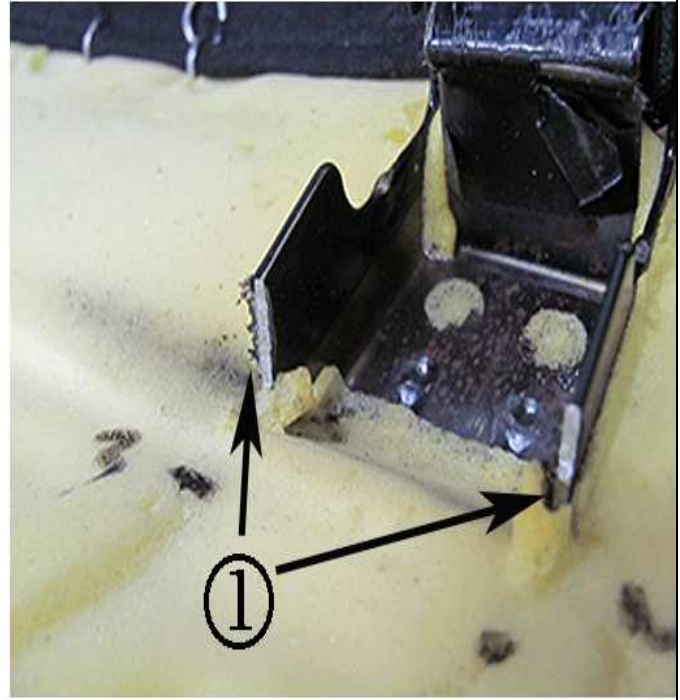
⇒ If replacing the REC, it may have the taller fuel pump relay installed from the factory. The tall relay must be removed and replaced with a short relay.

## Rear Seat Bracket Repair for Lucerne





1. With the rear seat cushion on a bench, measure 5 mm (0.197 in) from each edge of the right side seat mount bracket and mark with a paint marker as shown (1).



2. Using a cut off wheel or equivalent, carefully cut each side of the bracket as shown (1). Check for any rough edges and file if necessary.
3. Install the rear seat cushion.
4. Connect the battery.

4294550

### Warranty Information

For vehicles repaired under the Bumper-to-Bumper coverage (Canada Base Warranty coverage), use the following labor operation. Reference the Applicable Warranties section of Investigate Vehicle History (IVH) for coverage information.

### Rear Junction Block Positioning for DTS

1. Loosen the nuts that secure the REC to the floor panel.
2. Position the rear electrical center towards the rear of vehicle.
3. Tighten the nuts to specifications.
  - Refer to Fastener Specifications in SI.

### Parts Information

Causal Part	Description	Part Number	Qty
x	Low Profile Fuel Pump Relay	88953222	1
	Rear Electrical Center	20777935	1

Labor Operation	Description	Labor Time
5480178*	Replace Fuel Pump Relay	0.2 hr
Add	Rear Body Fuse Block (REC) Replacement	0.5 hr
Add	Wiring Repair	0.5 hr
Add	Cut Rear Seat Bracket (Lucerne Only)	0.4 hr
Add	Adjust Rear Body Fuse Block (REC) (DTS Only)	0.2 hr

\*This is a unique Labor Operation for Bulletin use only.

Version	3
Modified	July 18, 2016 – Added the Cadillac DTS. November 3, 2017 - Updated the Service Procedure and Parts Information sections.

