



**NUMBER:** 23-029-17

**GROUP:** 23 - Body

**DATE:** June 14, 2017

*This bulletin is supplied as technical information only and is not an authorization for repair. No part of this publication may be reproduced, stored in a retrieval system, or transmitted, in any form or by any means, electronic, mechanical, photocopying, or otherwise, without written permission of FCA US LLC.*

**SUBJECT:**

Dimpled Driver Side Front Leather Heated Seat

**OVERVIEW:**

This bulletin involves inspecting and installing heater element patches and replacing seat cushion cover, on the driver's front seat.

**MODELS:**

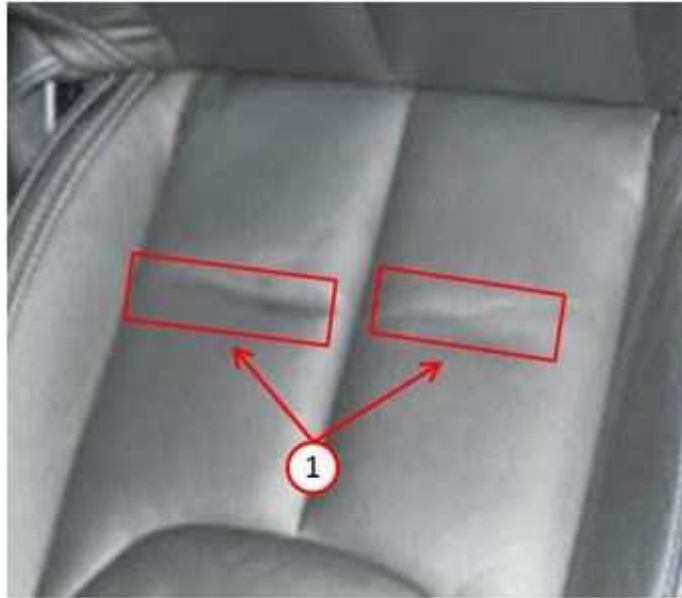
2015 - 2017 (JK) Jeep Wrangler

**NOTE:** This bulletin applies to vehicles within the following markets/countries: NAFTA, LATAM, APAC and EMEA.

**NOTE:** This bulletin applies to vehicles built on or before February 13, 2017 (MDH 0213XX) equipped with Leather Trimmed Bucket Seats (Sales Code \*AL), Moab Black leather Seats (Sales Code \*NL), Moab Dark Saddle leather Seats (Sales Code \*QL), Leather Seats - Recon PKG (Sales Code \*CL and Heated Front Seats (Sales Code JPM).

**SYMPTOM/CONDITION:**

The customer may describe, the driver's front leather seat has dimples in the seat bottom. The dimples are caused by openings in the heated seat element, see (Fig. 1) .



**Fig. 1**  
**Dimple Location On Leather Seats**

1 - Dimples

**DIAGNOSIS:**

If the customer describes the symptom/condition listed above, perform the Repair Procedure.

**PARTS REQUIRED:**

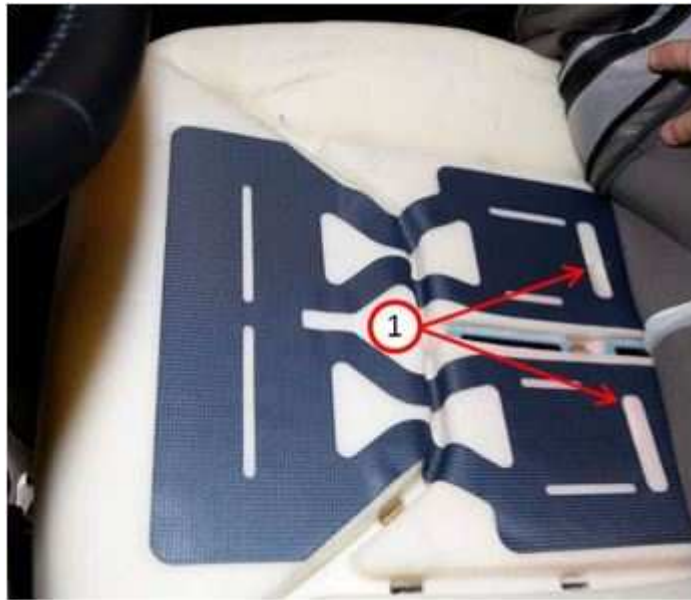
Qty.	Part No.	Description
2	68365284AA	Patch (2 per seat)
1	6CG27XDBAA	Cover, Front Seat Cushion
1	6CG27VT9AA	Cover, Front Seat Cushion
1	6CG27JFJAA	Cover, Front Seat Cushion
1	6CG27JRRAA	Cover, Front Seat Cushion
1	6CG27DX9AA	Cover, Front Seat Cushion
1	6CG34XDBAA	Cover, Front Seat Cushion
1	6CG34VT9AA	Cover, Front Seat Cushion
1	6CG34JFJAA	Cover, Front Seat Cushion
1	6CG34JRRAA	Cover, Front Seat Cushion
1	6CG34DX9AA	Cover, Front Seat Cushion
2	68248876AA	Hog Rings

**NOTE: 11 Hog rings will be needed to complete this repair procedure. 10 hog ring comes in (68248876AA) the package.**

**REPAIR PROCEDURE:**

**NOTE: This repair is only for the driver's seat, be it a right or left-hand drive vehicle.**

1. Remove the driver's seat cover. Refer to the detailed service procedures available in DealerCONNECT> TechCONNECT under: Service Info>23 - Body/Seats/Cover, Seat Cushion, Front/Removal .
2. Locate the area on the heated seat element to install the patches, see (Fig. 2) .



**Fig. 2**  
**Location To Install Patches**

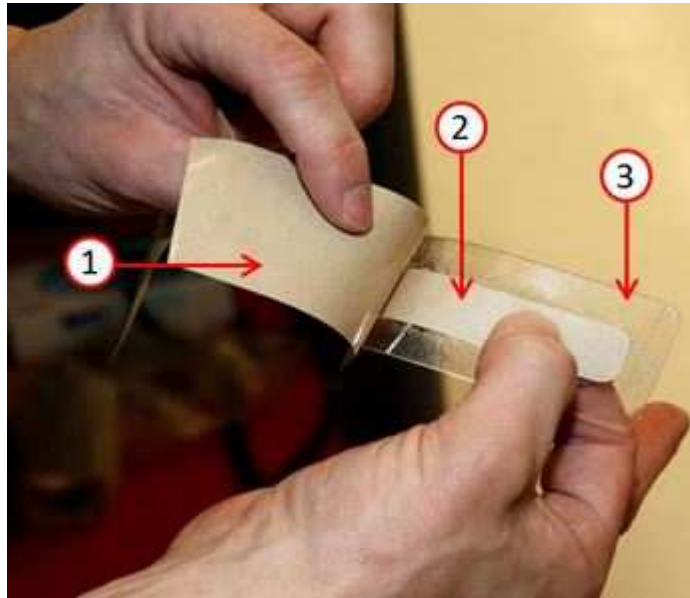
1 - Opening in heater element

---

**NOTE: Ensure that the heater element is free of debris that may prevent patch from properly adhering to heater mat.**

3. Clean the surfaces where the patches will be applied with alcohol wipe and allow the alcohol to evaporate.

4. Remove outer backing from patch. Do not remove the center backing from the patch, see (Fig. 3) .



**Fig. 3**  
**Center Backing On Patch**

- 1 - Outer backing
  - 2 - Center backing
  - 3 - Adhesive
- 

5. Align center backing of the patch to the opening in the heater element and apply pressure to the patch to assure good adhesion, see (Fig. 4) .



**Fig. 4**  
**Installing Patch On Heater Element**

6. Install the new driver's seat cover. Refer to the detailed service procedures available in DealerCONNECT> TechCONNECT under: Service Info>23 - Body/Seats/Cover, Seat Cushion, Front/Installation.

**POLICY:**

Reimbursable within the provisions of the warranty.

**TIME ALLOWANCE:**

Labor Operation No:	Description	Skill Category	Amount
23-20-40-94	Patches - Heater Element Install driver's Front Seat (Includes Seat Cover Replacement) (1 - Semi-Skilled)	6 - Electrical and Body Systems	0.9 Hrs.

**FAILURE CODE:**

ZZ	Service Action
----	----------------