



Service Bulletin

PRELIMINARY INFORMATION

Subject: Stop/Start System Malfunction or DTC P1064, P1065, P1066, P1068, P1069, P1070, P1074, P1077, P1078, P1079, P107A, P107B, P107C, P107D, P107E, P107F, P108A, P108B, P108C, P108D, P108E or P108F Set

Models: 2016 Cadillac ATS, CTS
Equipped with Stop/Start System (RPO KL9)

Attention: This PI also applies to any of the above models that may be Export from North America vehicles.

This PI has been revised to update the Recommendation/Instructions and Warranty Information. Please discard PI1519C.

Condition/Concern

Some customers may comment that the check engine light appears on the cluster or that the Stop/Start feature is no longer functioning.

During diagnosis, the technician may find DTC P1064, P1065, P1066, P1068, P1069, P1070, P1074, P1077, P1078, P1079, P107A, P107B, P107C, P107D, P107E, P107F, P108A, P108B, P108C, P108D, P108E or P108F set as current or history.

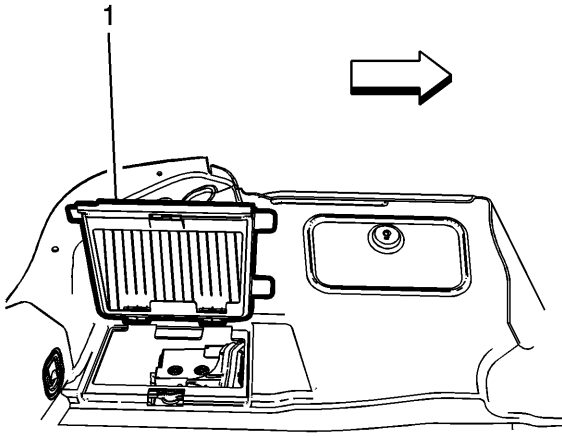
Recommendation/Instructions

Warning: Unless directed otherwise, the ignition must be OFF with the key removed, and all electrical loads must be OFF before servicing any electrical component. Disconnect the negative battery cable to prevent an electrical spark should a tool or equipment come in contact with an exposed electrical terminal. Failure to follow these precautions may result in personal injury and/or damage to the vehicle or its components.

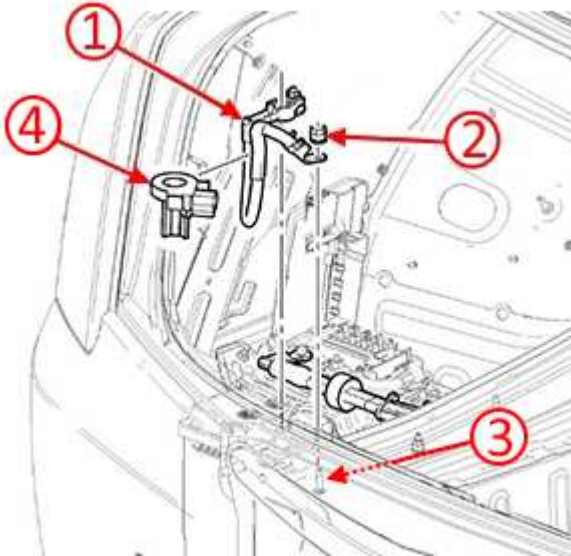
For Vehicles equipped with OnStar® (UE1) with Back Up Battery: The Back Up Battery is a redundant power supply to allow limited OnStar® functionality in the event of a main vehicle battery power disruption to the VCIM (OnStar® module). Do not disconnect the main vehicle battery or remove the OnStar® fuse with the ignition key in any position other than OFF. Retained accessory power should be allowed to time out or be disabled (simply opening the driver door should disable retained accessory power) before disconnecting power. Disconnecting power to the OnStar® module in any way while the ignition is On or with retained accessory power activated may cause activation of the OnStar® Back-Up Battery system and will discharge and permanently damage the back-up battery. Once the Back-Up Battery is activated it will stay on until it has completely discharged. The back-up battery is not rechargeable and once activated the back-up battery must be replaced.

Important: When removing terminal G400 or G402 for inspection, the 12V battery ground terminal must be removed first to prevent any accidental discharge of the UltraCap and/or discharge from the 12V battery when diagnosing the G400 or G402 ground connections.

1. Command the Discharge Start/Stop Capacitor parameter with the scan tool and discharge the multifunction energy storage capacitor. Wait 3 minutes for the capacitor to discharge. Refer to *Multifunction Energy Storage Capacitor Replacement (KL9)* in SI.

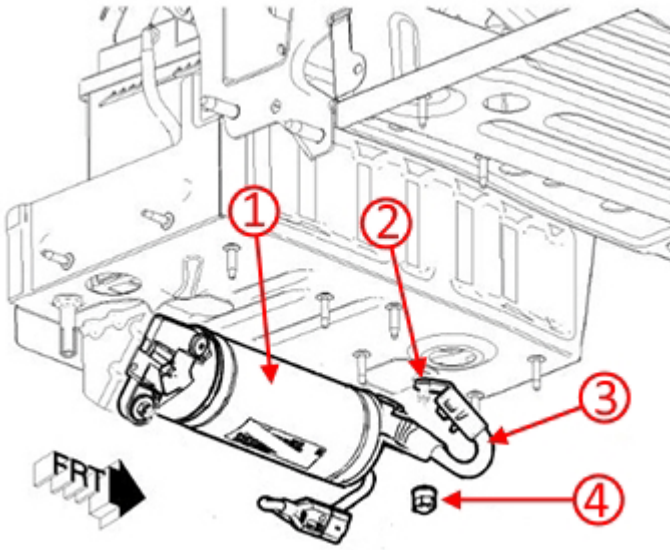


2. Open the access cover (1).



3. Disconnect the negative battery cable (1) at the battery.
4. Check the G400 ground nut for proper torque.
 - If the torque is within specifications, continue with procedure.
5. Remove the ground nut (2).
6. Inspect and remove any paint on the ground stud (3).
7. Torque the nut to specifications. Refer to Fastener Specifications in SI.

Important: Do Not connect the battery negative cable until the G402 ground cable has been inspected.
8. Raise the vehicle. Refer to *Lifting and Jacking the Vehicle* in SI.



Note: The ground nut can be accessed from under the vehicle and behind the left side rear wheelhouse liner.

9. Check the G402 ground nut at the Start/Stop Capacitor (1) for proper torque.
 - If the torque is within specifications, continue with procedure.
10. Remove the ground nut (4).
11. Inspect and remove any paint on the ground stud (2).
12. Torque the nut to specifications. Refer to Fastener Specifications in SI.
13. Lower the vehicle.
14. Connect the negative battery cable.

If no issues are found, continue with Service Information (SI) diagnostics.

The Ultracapacitor is also known as the Multifunction Energy Storage Capacitor, or Stop-Start Capacitor.

Warranty Information

For vehicles repaired under warranty, use:

Labor Operation	Description	Labor Time
5480268*	Remove, Inspect, Clean and Torque Ground Nut G400 or G402	0.8 hr
*This is a unique Labor Operation for Bulletin Use Only.		

GM bulletins are intended for use by professional technicians, NOT a "do-it-yourselfer". They are written to inform these technicians of conditions that may occur on some vehicles, or to provide information that could assist in the proper service of a vehicle. Properly trained technicians have the equipment, tools, safety instructions, and know-how to do a job properly and safely. If a condition is described, DO NOT assume that the bulletin applies to your vehicle, or that your vehicle will have that condition. See your GM dealer for information on whether your vehicle may benefit from the information.



WE SUPPORT VOLUNTARY TECHNICIAN CERTIFICATION