



Service Bulletin

TECHNICAL

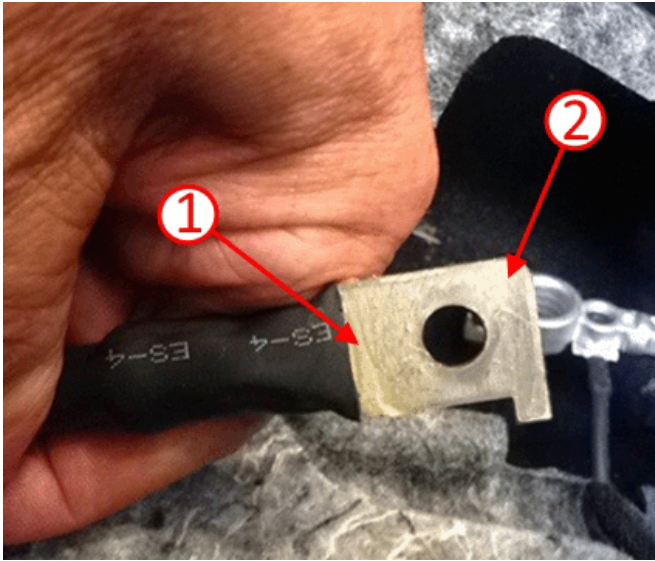
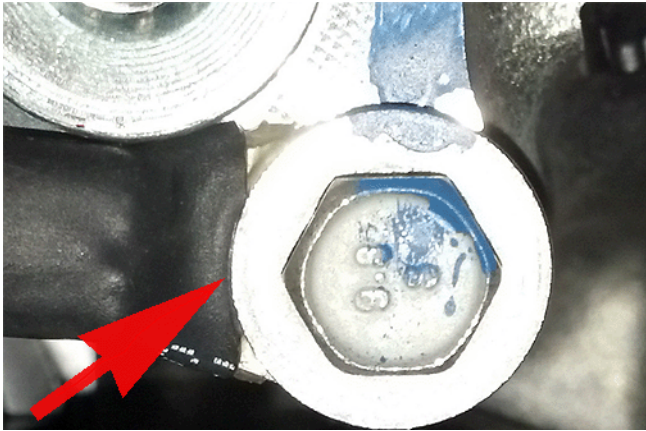
Subject: No Crank, No Start, Rough idle, Sluggish, Low Voltage, Dead Battery, No Radio Reception and Door Locks Inoperative - Various DTCs Set

Brand:	Model:	Model Year:		VIN:		Engine:	Transmission:
		from	to	from	to		
Chevrolet	Camaro	2016	2016				

Involved Region or Country	North America
Condition	<p>Some customers may comment on one or more of the following conditions:</p> <ul style="list-style-type: none"> • No crank • No start • Rough idle/sluggish • No radio reception • Door locks inoperative • Low voltage • Dead battery <p>The Technician may find various DTCs set.</p>
Cause	<p>This condition may be caused by a poor positive or negative battery cable connection at the battery, fuse block, engine block or starter.</p> <p>This condition may also be caused by the glue from the heat shrink tubing creating a thin layer on the battery cable eyelet.</p>
Correction	<p>Note: If no DTCs are present, the issue may be caused by a momentary loss of power or ground. Use the following steps to correct the condition.</p> <p>Perform the inspection procedure listed below.</p>

Service Procedure

1. Check the battery cables for proper installation and torque of the fasteners.



2. Inspect the positive battery cable eyelet at the Power Distribution Fuse Block (UBEC) for either excess heat shrink tubing or glue (1) under the eyelet. Inspect for adhesive that has seeped out onto the eyelet during the heating of the shrink tube (2), or the shrink tube itself extending into the eyelet area. Carefully trim the heat shrink tube if needed, clean adhesive from the eyelet (sand off), reinstall and torque.

Tighten: Tighten to 12 Y (106 lb in).

Parts Information

No parts are required for this repair.

Warranty Information

Labor Operation	Description	Labor Time
4081578*	Inspect and Tighten Positive and Negative battery Cables	0.2 hr
Add	Battery Eyelet Inspection and Repair	0.5 hr

*This is a unique Labor Operation for Bulletin use only.

Version	1
Modified	

GM bulletins are intended for use by professional technicians, NOT a "do-it-yourselfer". They are written to inform these technicians of conditions that may occur on some vehicles, or to provide information that could assist in the proper service of a vehicle. Properly trained technicians have the equipment, tools,

safety instructions, and know-how to do a job properly and safely. If a condition is described, DO NOT assume that the bulletin applies to your vehicle, or that your vehicle will have that condition. See your GM dealer for information on whether your vehicle may benefit from the information.



WE SUPPORT VOLUNTARY TECHNICIAN CERTIFICATION