



# Service Bulletin

## INFORMATION

**Subject:** Information on Communication with OnStar® Module After Canadian Cellular Upgrade

**Models:** 2000-2009 GM Passenger Cars and Light Duty Trucks

2010-2011 Buick Lucerne

2010-2013 Buick Enclave

2010-2011 Cadillac DTS, STS

2010-2013 Cadillac CTS, Escalade Models

2010 Chevrolet Cobalt

2010-2011 Chevrolet Aveo, Malibu

2010-2012 Chevrolet Colorado

2010-2013 Chevrolet Avalanche, Corvette, Express, Impala, Silverado, Suburban, Tahoe, Traverse

2010-2012 GMC Canyon

2010-2013 GMC Acadia, Sierra Models, Yukon Models

2011-2013 GMC Savana

2010 HUMMER H2, H3

2010 Pontiac G3, G5, G6, Solstice, Vibe

2010 Saturn AURA, OUTLOOK, VUE

Equipped with OnStar® (RPO UE1)

**Attention:** This Bulletin only applies to vehicles that have been involved in the Canadian OnStar® cellular communication upgrade. Verify in the Investigate Vehicle History (IVH) if the upgrade has been completed before proceeding with this Bulletin.

***This Bulletin has been revised to remove Saab from Models section. Please discard 15-08-73-001.***

Starting in January of 2015, the OnStar® cellular network available in Canada uses digital Global Systems for Mobile (GSM) technology. Older vehicles equipped with digital Code Division Multiple Access (CDMA) modules can be upgraded to the new GSM technology with dealer-installed equipment. Many of these older vehicles originally were diagnosed using the Tech 2 scan tool. When performing scan tool communications on GSM-upgraded vehicles, the GDS 2 scan must be used for the Telematics Communication Interface Control Module (TCICM), or OnStar® Module.

**Notice:** All scan tool communications with other modules on these vehicles continue to be performed using the Tech 2. Failure to use the GDS 2 to communicate with the Telematics Communication Interface Control Module (TCICM), or OnStar® Module, may result in an incorrect diagnosis.

**Digital GSM Capable Modules that only Communicate with GDS 2 are Listed Below:**

- Generation 9.4 - Class 2 – Canada GSM Network Upgrade Module
- Generation 9.4 – GMLAN (low speed) – Canada GSM Network Upgrade Module
- Generation 10.0 – GMLAN (high speed) – Canada GSM Network Upgrade Module

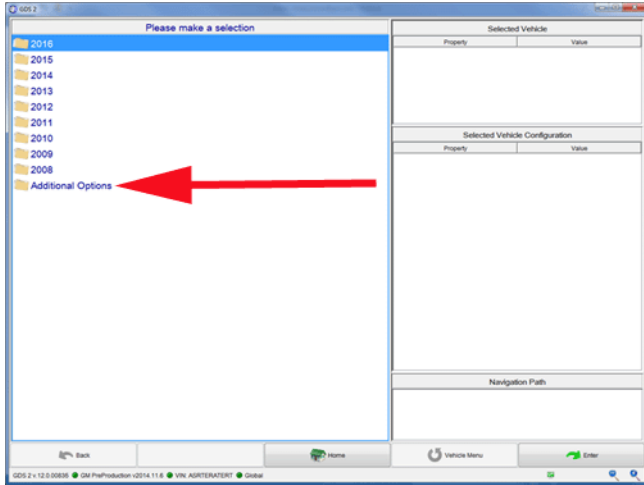
## Using GDS 2 to Communicate with Digital-GSM Upgrade Modules (GDS 2 Supported Vehicles):

The GDS 2 scan tool attempts to identify vehicles by electronically reading and decoding the VIN. If the vehicle is already supported in the GDS2 scan tool, continue with standard vehicle and telematics (OnStar) diagnostics. No further action is required.

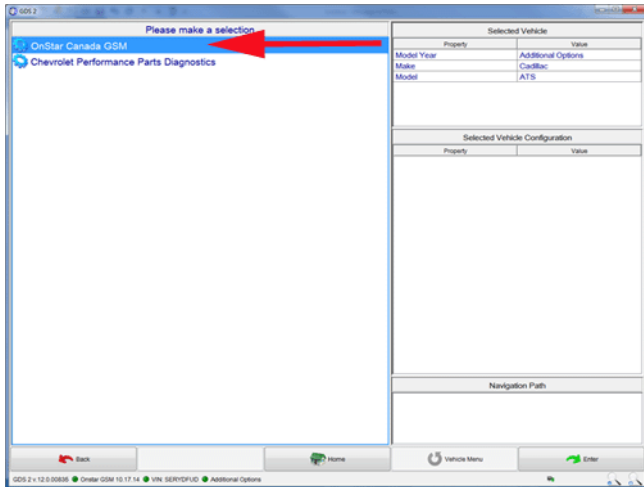
## Using GDS 2 to Communicate with Digital-GSM Upgrade Modules (Tech 2 Supported Vehicles):

**Note:** If the Tech 2 does not communicate to other modules besides the Telematics Communication Interface Control Module (TCICM), or OnStar® Module, refer to the Data Link References in SI.

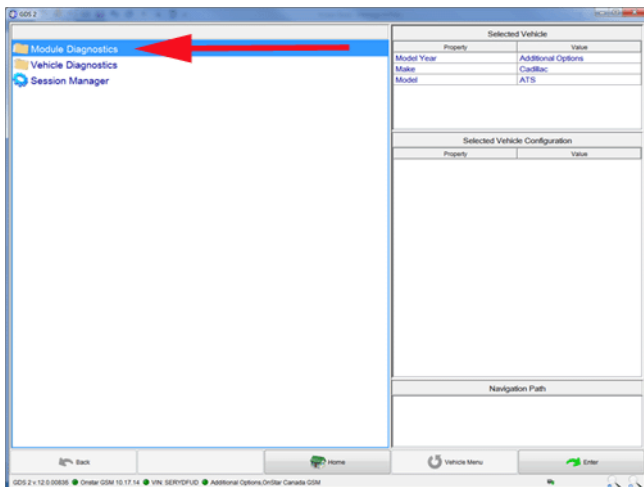
Since GDS 2 will not decode the VIN of a vehicle originally supported by the Tech2, a manual selection must be performed. To navigate to the specially-supported modules follow the instructions below.



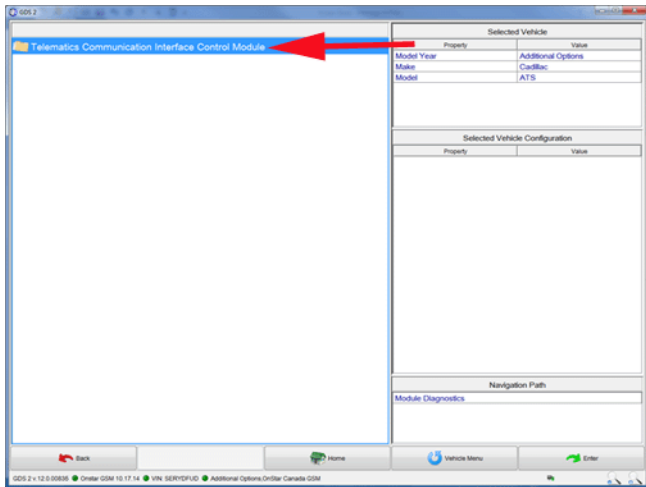
Select the **Additional Options**.



Select the **OnStar Canada GSM** option.



Select the **Module Diagnostics** option.



Select the **Telematics Communication Interface Control Module** option.

**Note:** The Generation of the Digital-GSM upgrade is then automatically determined. The GDS2 scan tool diagnostics data that follows is then appropriately configured for the generation of the upgraded module that is installed in the vehicle.

GM bulletins are intended for use by professional technicians, NOT a "do-it-yourselfer". They are written to inform these technicians of conditions that may occur on some vehicles, or to provide information that could assist in the proper service of a vehicle. Properly trained technicians have the equipment, tools, safety instructions, and know-how to do a job properly and safely. If a condition is described, DO NOT assume that the bulletin applies to your vehicle, or that your vehicle will have that condition. See your GM dealer for information on whether your vehicle may benefit from the information.



WE SUPPORT VOLUNTARY TECHNICIAN CERTIFICATION