



Preliminary Information

PIC6300 Various Noise Concerns Coming From the Folding Top Assembly

Models

Brand:	Model:	Model Years:	VIN:		Engine:	Transmissions:
			from	to		
Chevrolet	Camaro	2016 - 2017	All	All	All	All
Involved Region or Country	All					
Additional Options (RPO)	CM8 - Convertible Top					
Condition	Some customers may have a concern where they hear a noise or various noises coming from the folding top assembly. These noises may be difficult for the servicing technician to isolate.					
Cause	This PI will provide 5 common locations for the dealership technicians to inspect for noises specific to the convertible.					

Concern #1

Flipper Door / Upper Quarter Trim Panel Area

This may described as a squeak, creak, or buzz type noise coming from behind the driver's head in the rear window area. This may be caused by the "flipper door(s)" rattling when the folding top is "up" or in the "closed" position. To confirm this noise is coming from the flipper door(s), either remove the trim panel as seen in the photo below, or simply open the folding top. These panels are referred to as the Quarter Upper Trim Panels in the Electronic Parts Catalog.



If the noise is narrowed down to the "flipper doors", replace the entire trim panel.

Concern #2

Squeak Noise Coming From The Tonneau Cover Seal

Customers may describe this noise as shoes squeaking on a gym floor. Typically, this noise will only be heard when the vehicle is cold or wet. This noise is caused by the tonneau contacting the body side seal. To diagnose this noise, apply masking tape or spray Superlube to the underside of the tonneau where it meets the molded section of the body side seal and verify that the noise is eliminated. A new seal will be available that is made out of a higher durometer rubber to prevent this noise from occurring. On this new seal, an additional piece of foam rubber is also being added to prevent a wind noise concern. This is normal and this additional piece of foam should not be removed from the new part once it is received.

Concern #3

Rattle Noise From The Center Of The Tonneau Cover

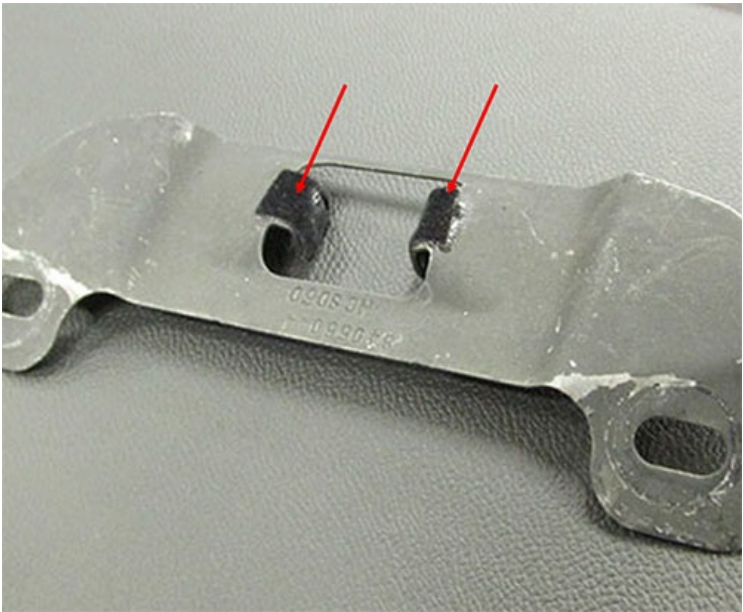
Some customers may comment on a buzz, snap, or rattle noise coming from the center of the tonneau cover area. There may be multiple issues, any of which may cause a similar noise. Be sure to inspect / diagnose all possibilities before assuming that only one issue is causing the customer's concern.

- One area of concern may be the plastic wedge cover that is installed on the center alignment pin of the tonneau cover. This plastic cover may slide or wiggle around, causing this noise. There were 2 styles of wedge covers used on these cars. The first style was a V-shaped plastic wedge cover as seen in the photo below. The second style was a modified V-shaped wedge cover. This second style had 2 flat areas at the top of the "V" that were actually parallel to each other. The first step in this repair is to replace the first style wedge cover with a second style cover. Then, as a second step, before the new plastic wedge cover is actually installed onto the metal post, wrap the post with 1 layer of flocking tape and then install the wedge cover over the tape. This will take up the slight gap and prevent this piece from rattling in the future.



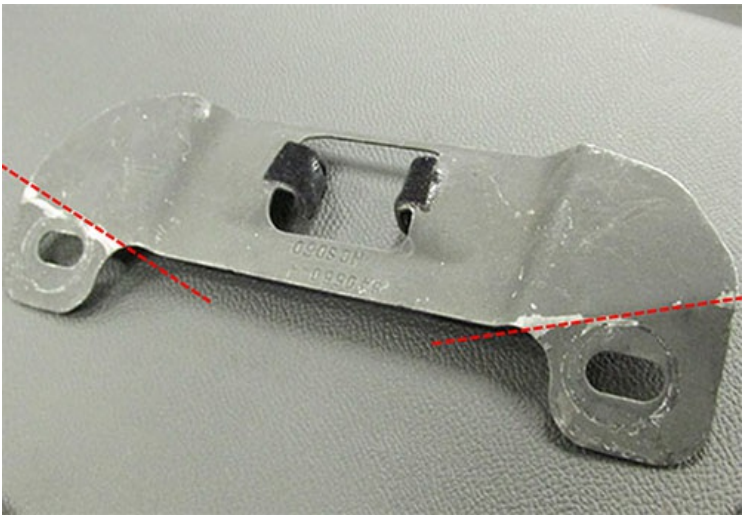
- The second area of concern may be the metal receiver that the alignment pin slides into. Remove the receiver from the vehicle, as seen in the photo below, and place it on a flat work surface.

NOTE: There is no need to completely remove the trim panel from the car in order to remove this metal receiver. Simply pop the trim panel up to release the clips. Then allow it to rest on the rear seat frame. This will allow enough room to remove the two fasteners from the receiver. If any flocking tape is found on the "ears" of the receiver, as indicated by the 2 red arrows in the second photo below, remove the tape and clean any residual glue from these "ears".



Before this receiver is reinstalled into the car, slightly bend the "ears" of the receiver as needed, so that the plastic wedge cover fits into the receiver without any looseness. It is VERY important that the wedge does not bind at all in the receiver, so make sure it is not too tight.

- Make sure the "tabs" of the receiver (where the two fasteners are actually installed) are bent down slightly. This will keep the receiver flat against the sheet metal once it is installed and torqued down. This bend should be about 10° - 15°. It should be slightly bent, down the imaginary line that is drawn between the inner radius of the receiver and the witness marks of the fasteners that hold it in position. See the photo below as a reference of these "tabs".



Concern #4

Ticking Noise From The Tonneau Cover

Some customers may comment on a noise coming from the center of the tonneau cover area that concern #3 does not address. This may be caused by the contact between the tonneau cover center bump stop as seen in the first photo below, and the tonneau cover itself. If this contact is causing a noise, apply a mylar patch (PN 84263959) to the body where this contact occurs. See the second picture below for the location of this patch.



Concern #5

Noise From The Number 1 Bow (Header) Area

A noise may be heard from the header bow area of the folding top. Dealership technicians are to remove the trim panel from the underside of the 1 bow. Depending on the build date, there may or may not be retaining screws holding this trim panel in the car. Once the panel has been removed, technicians are to first inspect for the presence of yellow push pins on the underside of the panel. If all of the push pins on the underside of this panel are black in color, replace them with new clips. The new, updated clips are yellow in color. Next, verify that both flocking tape and foam blocks can be found around the perimeter of this trim panel. The flocking tape should be located on the trailing edge of the panel and must be orientated as seen in the photo below.



Once this has been verified, dealership technicians should also verify that all six foam blocks are present, and are located in the correct areas. The photo below should be used as a guide to verify the blocks are in the correct location. If any of them are missing or damaged, relocate or replace them as needed.



Warranty Information

Because the repair(s) may be one or several of those listed above, dealerships are to use the labor operation that most closely fits the specific repair that was made.

Version History

Version	1
Modified	