



SI M51 07 15  
Body Equipment

December 2017  
Technical Service

## PAINT ON THE B-PILLAR IS SCRATCHED/DAMAGED

New information provided by this revision is preceded by this symbol .

This Service Information bulletin replaces SI M51 07 15 dated **October 2015**

### What's New:

- Model – Added F56
- Situation - Typo
- Correction – New text
- Procedure – Completely new
- Parts- new parts added
- Warranty- new codes

### MODEL

F56 (Cooper, Cooper S and JCW 2 door Hardtops)	 F57 (Cooper, Cooper S, JCW Convertible)
--	---

### SITUATION

The paint finish on the B-pillar (above the door striker) is scratched due to the inner door cavity window seal.

### CAUSE

The door window cavity seal rubber is too hard and scuffs the B-Pillar area when opening and closing door.

### CORRECTION

Polish, and if necessary, touchup the paint on the affected area of the B-Pillar(s), then install the protective film.

For certain F56 models, replace the door seal(s).

### PROCEDURE

For conditions that are similar to the situation described:

1. For F56 models – check the production date of the vehicle.

#### **Was the vehicle produce before 07/18/2017?**

**YES-** Replace the door seal(s) with the appropriate part number as detailed below, then go to next step.

**NO** - go to next step

2. Polish out the scratches in the B-pillar.
3. Touchup the scratched paint area if needed.
4. Print the template for the vehicle series to be protected from attached files

(M510715\_Attachment F56 Template or M510715\_Attachment F57 Template).



Note: Verify the size of the 100 mm benchmark on the print. Rescale and reprint if necessary.

5. Using part number 51 77 7 404 141 protection film, lay the template on the film, mark and cut out carefully.



Note: Be certain to cut off the entire outline of the template from the film. If not properly trimmed, the

remaining outline will be visible when applied to vehicle.

6. Clean the affected area with R1 Cleaner (BMW P/N 83 19 2 211 217) or equivalent to remove any wax or oil residue from the polishing process.
7. Spray a fine mist of water over the affected area where the protective film is to be adhered.
8. Align the cutout film on the B-pillar contour where the scratching had been occurring.
9. When the film is positioned properly, remove the excess water with a plastic squeegee.

## PARTS INFORMATION

Part Number	Description	Quantity
51 33 7 458 245	Inner door window cavity seal (front left) with change index -03 (some F56 only)	1
51 33 7 458 246	Inner door window cavity seal (front right) with change index -03 (some F56 only)	1
51 77 7 404 141	Protective Film	1
83 19 2 211 217	Cleaner, R1	As needed

## PARTS INFORMATION

Part Number	Description	Quantity
51 33 7 458 245	Inner door window cavity seal (front left)	1
51 33 7 458 246	Inner door window cavity seal (front right)	1

## WARRANTY INFORMATION

**Only one main labor operation can be claimed per repair visit. All other labor operations on the same line or other lines must be claimed using Plus code labor operations.**

Covered under the terms of the MINI New Passenger Car Limited Warranty.

**F56 Only (2 door Cooper, Cooper S, JCW Hardtop)**

<b>Defect Code:</b>	<b>5172007800</b>	
<b>Labor Operation:</b>	<b>Labor Allowance:</b>	<b>Description:</b>
51 21 330	Refer to KSD2	Removing and installing/replacing rubber
window seal for front left or right side window		
(includes adjusting window) (Main work)		
Or:		
51 21 800	Refer to KSD2	Removing and installing/replacing rubber
window seal for front left or right side window		
(includes adjusting window) (Plus work)		
And, if necessary:		
51 99 000	4 FRU	Work time for replacing rubber window seal for other front side window (Associated Work - Repairing both sides)

Work time labor operation code 51 99 000 is not considered a Main labor operation. Also, since the "work time" FRU allowance to be claimed is specified, a separate punch time is not required.

And, for the:

**F56 and F57 (2 Door and Convertible Cooper, Cooper S, JCW Hardtop)**

<b>Defect Code:</b>	<b>5191905400</b>	
<b>Labor Operation:</b>	<b>Labor Allowance:</b>	<b>Description:</b>
00 63 113	6 FRU	Attach paint protective film to side frame door aperture (Main Work for both sides)
Or:		
00 63 647	5 FRU	Attach paint protective film to side frame door aperture (Plus Work for both sides – Vehicle is already in the workshop)

Posted: Thursday, December 21, 2017

## ATTACHMENTS

View PDF attachment [Template Instructions - M51 07 15.](#)

View PDF attachment [Template for F56.](#)

View PDF attachment [Template for F57](#).

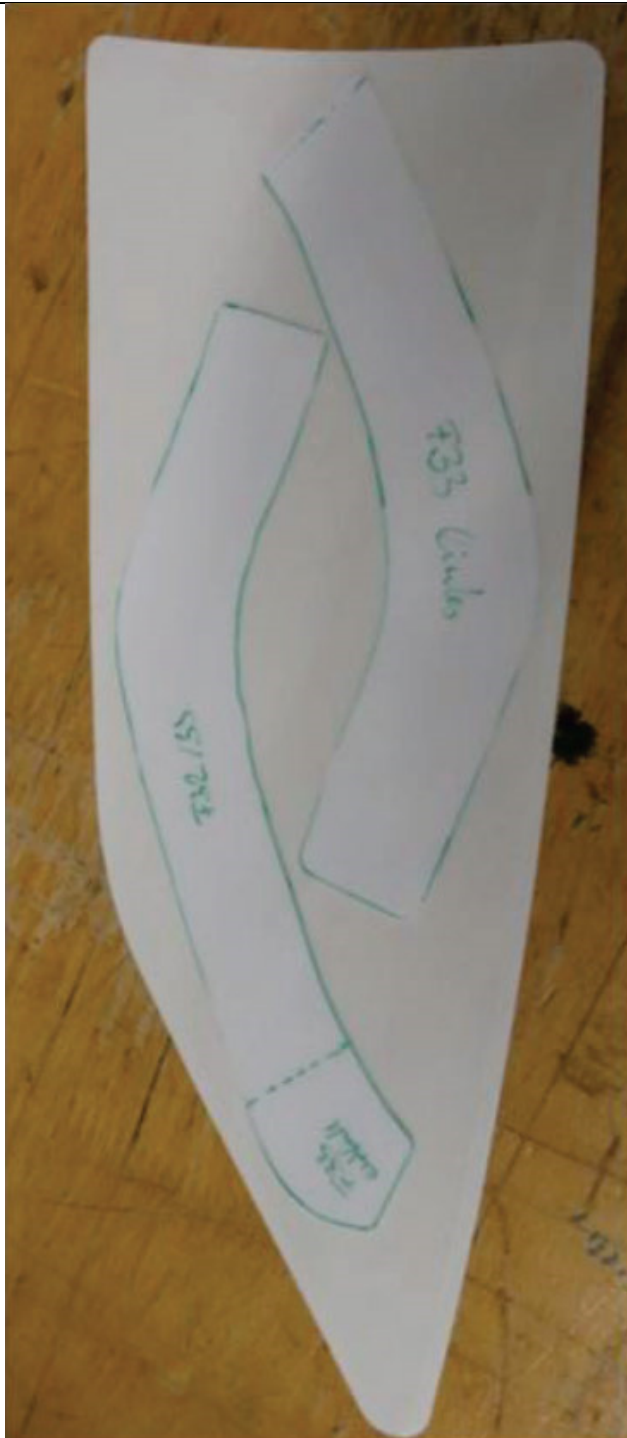
[ Copyright ©2017 BMW of North America, Inc. ]

## Paint Protector Film Application

1. Print template for vehicle series to be protected, from attached files.



Note: Verify the size of the 100 mm benchmark on the print. Rescale and reprint if necessary.

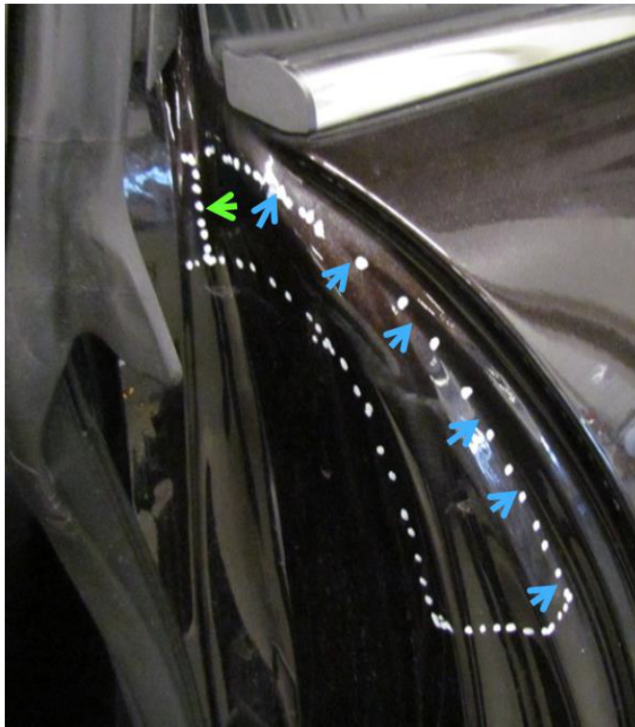


2. Using part number 51 77 7 404 141 protection film, lay the template on the film, mark and cut out carefully.

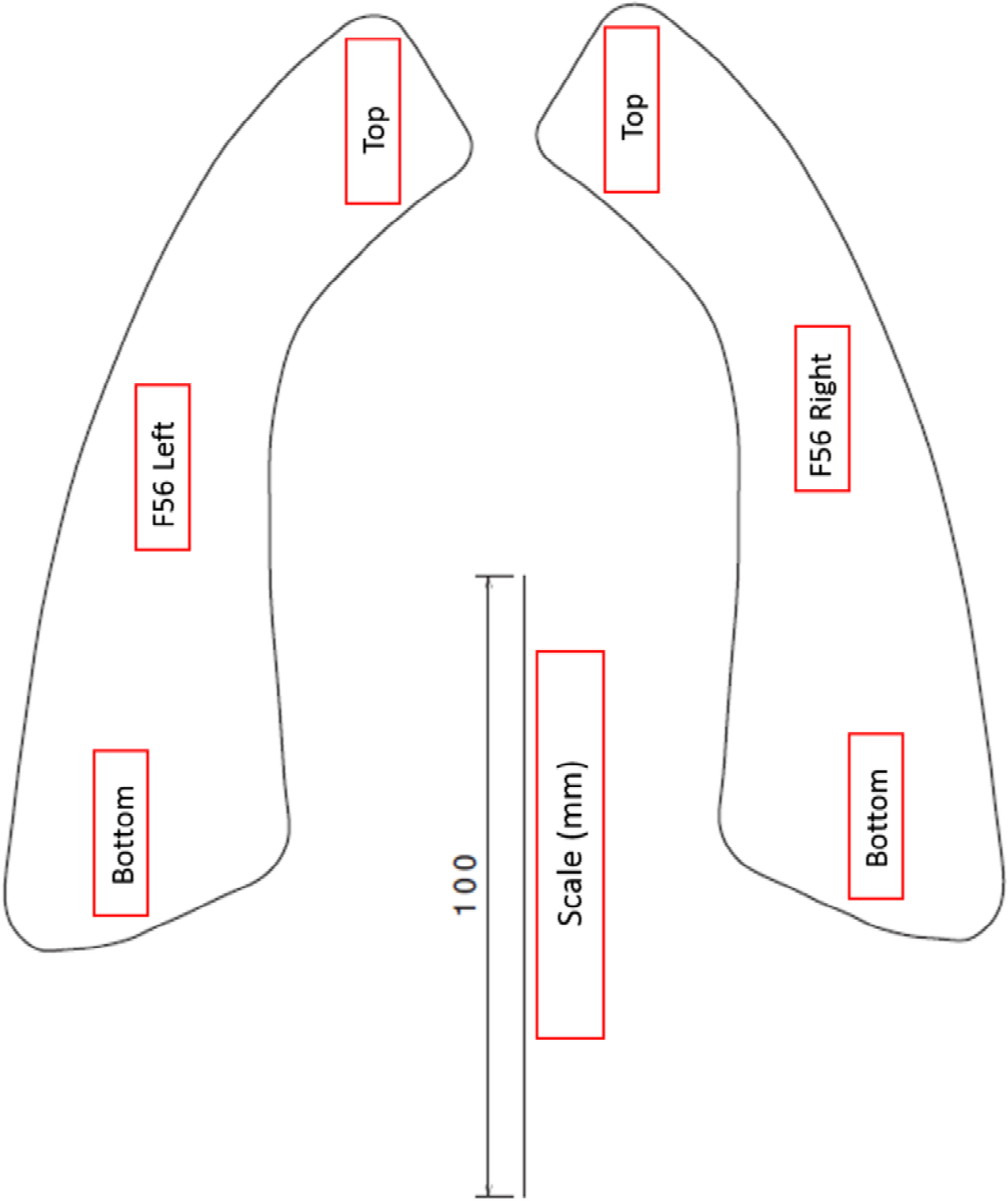


Note: Be certain to cut off the entire outline of the template from the film. If not properly trimmed, the remaining outline will be visible when applied to vehicle.

3. Clean the affected area with R1 cleaner (**83 19 2 211 217**) to remove any residue of the polishing.
4. Spray a fine mist of water where the protective film is to be adhered.
5. Align the cutout film on the B-pillar contour at the blue arrows, as shown in the accompanying graphics, applying toward the gasket (green arrows).

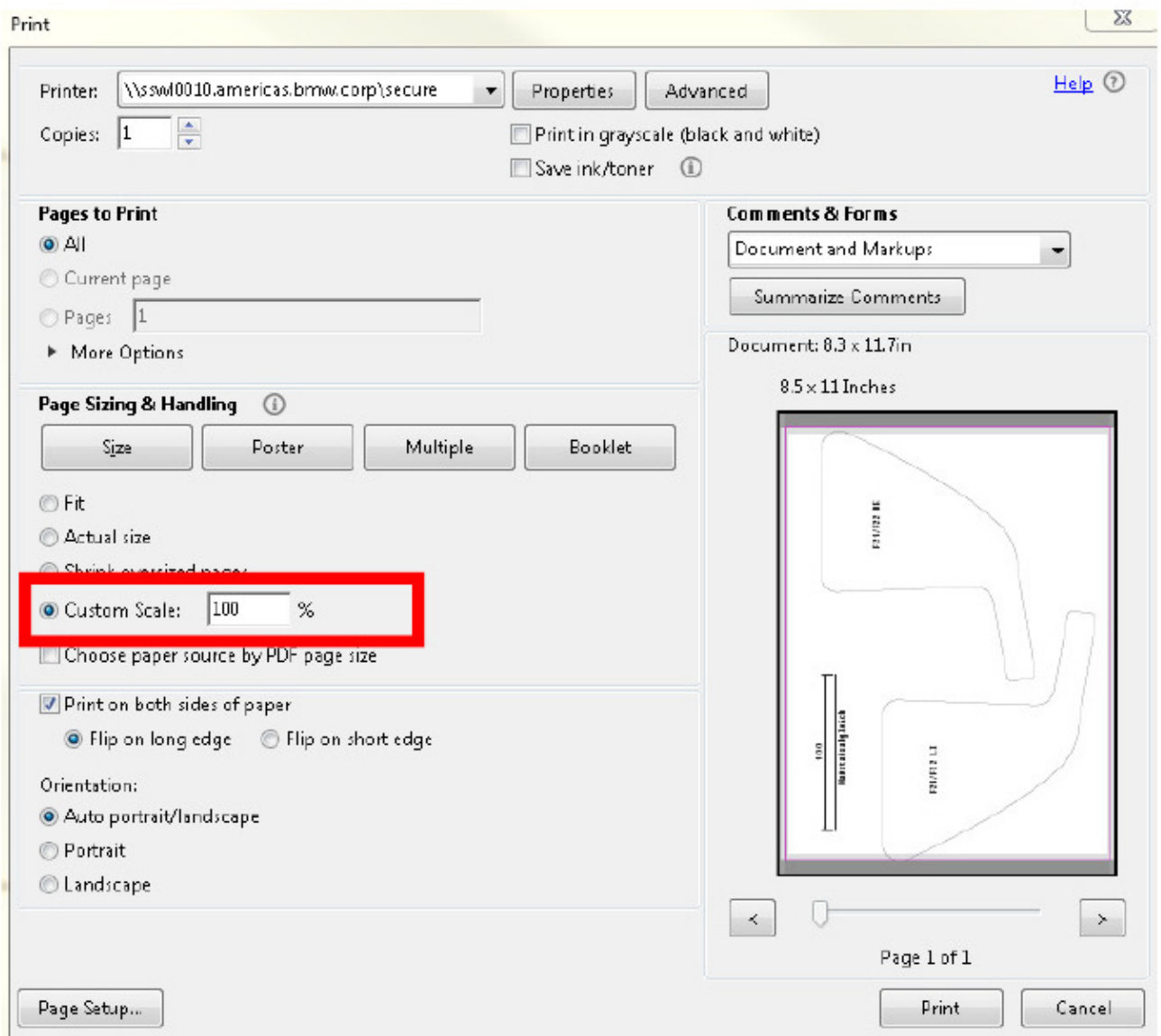
**F56**

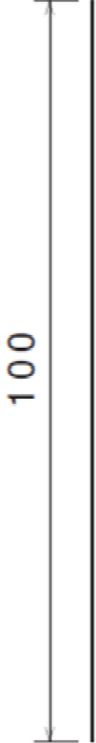
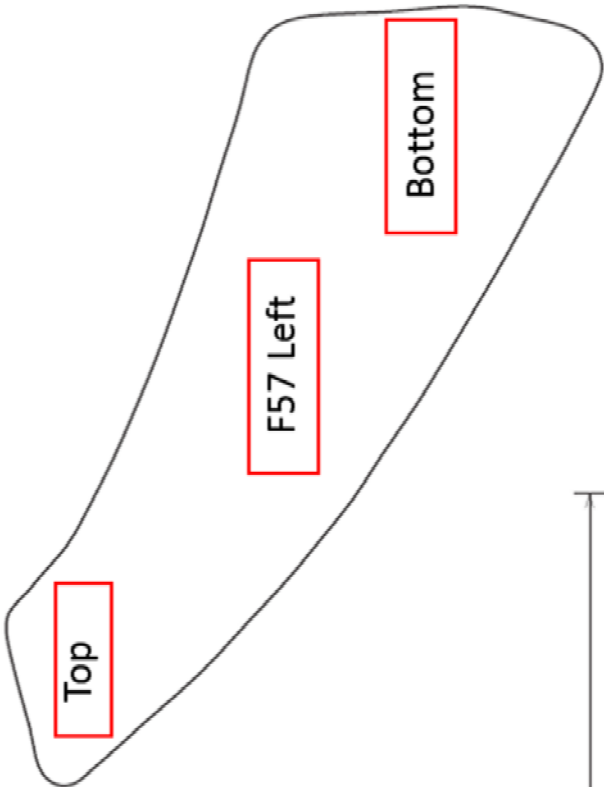
6. When the film is positioned as desired, remove excess water with a plastic squeegee.



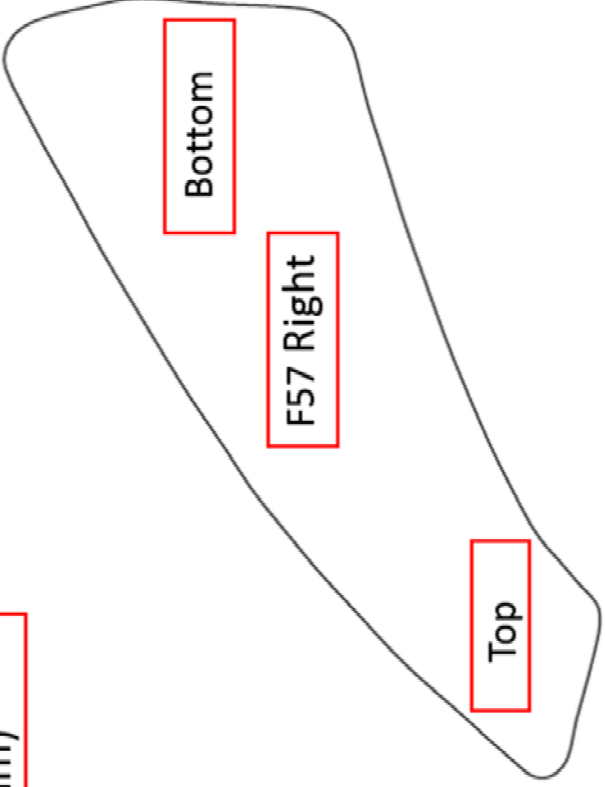
**Note:**

When printing use the “Custom Scale” below to ensure the correct template size. When printing, go to “Print settings” and adjust the “Custom Scale” until the scale on the template measures 100 millimeters.





Scale (mm)



**Note:**

When printing use the “Custom Scale” below to ensure the correct template size. When printing, go to “Print settings” and adjust the “Custom Scale” until the scale on the template measures 100 millimeters.

