



Service Bulletin

File in Section: -

Bulletin No.: 17-NA-336

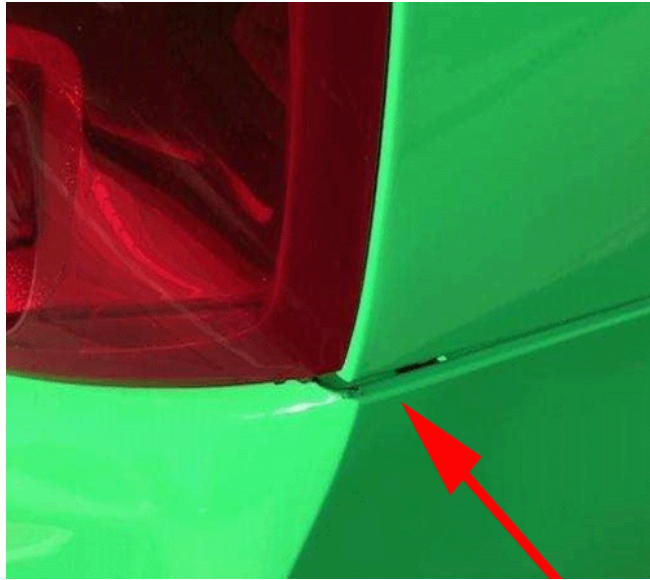
Date: October, 2017

TECHNICAL

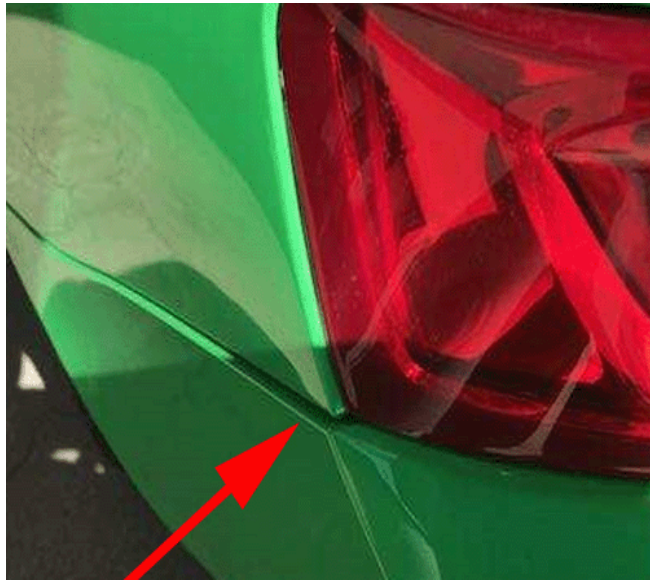
Subject: Rear Fascia Gap

| Brand: | Model: | Model Year: | | VIN: | | Engine: | Transmission: |
|-----------|--------|-------------|------|------|----|---------|---------------|
| | | from | to | from | to | | |
| Chevrolet | Camaro | 2017 | 2018 | | | All | All |

| Involved Region or Country | North America, China, Korea, Europe, Russia and N.A. Export Regions |
|----------------------------|--|
| Condition |  4882654 |



4882655



4882657

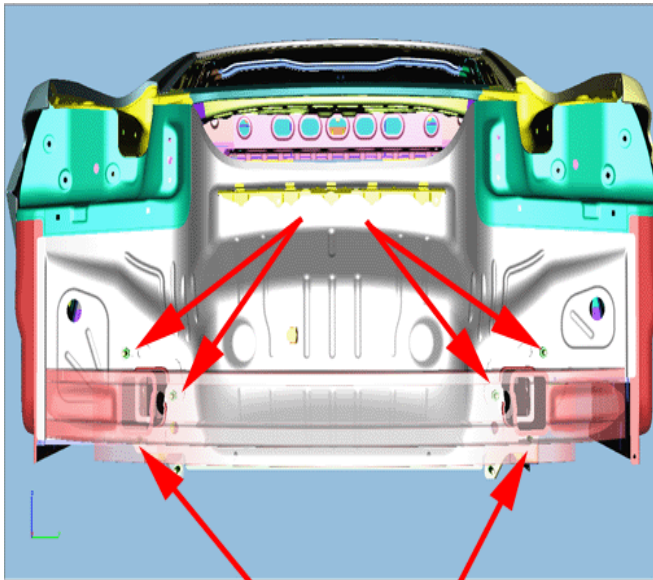
Some customers may comment that the rear fascia is sticking out near the tail lamp.

| | |
|-------------------|---|
| Cause | This may be due to the stud not being centered in the hole of the impact beam mounting plate. |
| Correction | Loosen nuts to the impact beam and re-adjust using the procedure outlined below. |

Service Procedure

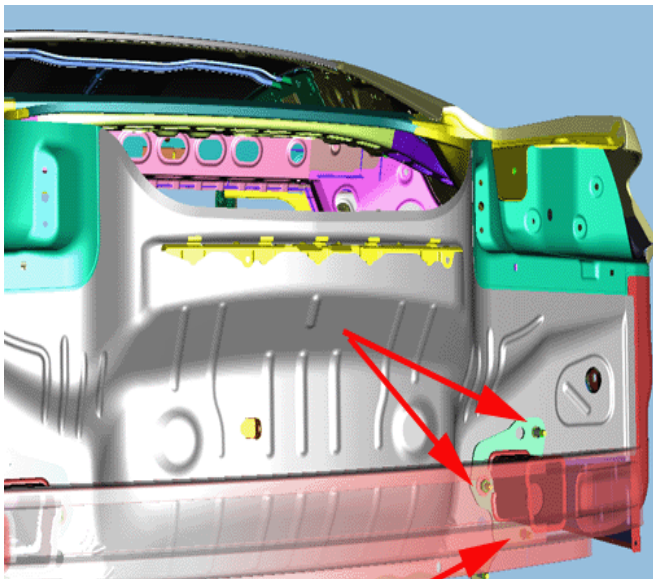
If you encounter a vehicle with the above concern, complete the following steps:

1. Remove the rear fascia. Refer to *Rear Bumper Fascia Replacement* in SI.

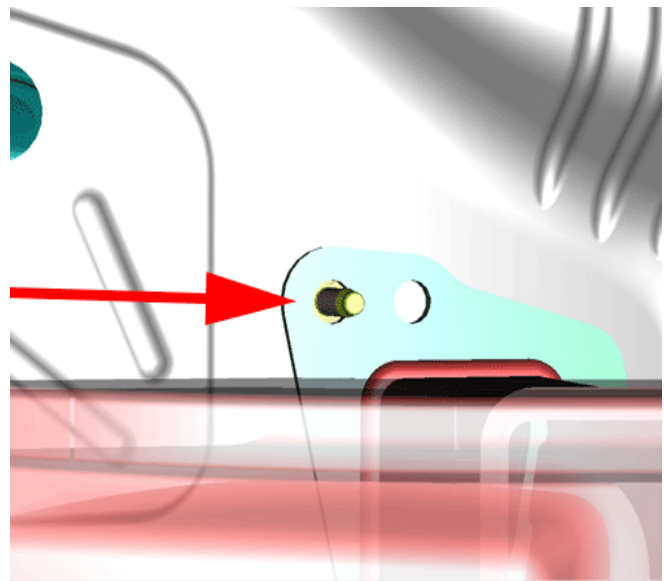


4882658

2. Loosen the 6 nuts securing the impact beam/bar. Fully remove the top two. Refer to *Rear Bumper Impact Bar Replacement* in SI.



4882659



4882660

3. Move the impact beam up 3 mm, so the stud is centered in the hole in the impact beam mounting plate. Make sure both sides are centered.
4. Re-secure the impact beam and install the fascia.

Note: Before installing the fascia, inspect the rear fascia bracket to see if the inserts are rounded off that secure the fascia. If the inserts are unable to hold the fascia as intended, the bracket should be replaced.

Note: If the fascia has been subjected to extended periods of high temperature, the flange that snaps to the guide brackets may have taken a set and may not properly secure to the brackets. If that is the case, the fascia may need to be replaced.

Parts Information

No parts needed for this condition.

Warranty Information

For vehicles repaired under the Bumper-to-Bumper coverage (Canada Base Warranty coverage), use the following labor operation. Reference the Applicable Warranties section of Investigate Vehicle History (IVH) for coverage information.

| Labor Operation | Description | Labor Time |
|--|-------------------------------|------------|
| 1480908* | Adjust Rear Impact Bumper Bar | 1.1 hrs |
| *This is a unique Labor Operation for Bulletin use only. | | |

| | |
|----------|---------------------------|
| Version | 1 |
| Modified | Released October 20, 2017 |

GM bulletins are intended for use by professional technicians, NOT a "do-it-yourselfer". They are written to inform these technicians of conditions that may occur on some vehicles, or to provide information that could assist in the proper service of a vehicle. Properly trained technicians have the equipment, tools, safety instructions, and know-how to do a job properly and safely. If a condition is described, DO NOT assume that the bulletin applies to your vehicle, or that your vehicle will have that condition. See your GM dealer for information on whether your vehicle may benefit from the information.



WE SUPPORT VOLUNTARY
TECHNICIAN
CERTIFICATION