

HDD Navigation Map Update Process (EMV-N)

Service Category Audio/Visual/Telematics

Section Navigation/Multi Info Display

Market USA

Lexus Supports
ASE Certification 

Applicability

YEAR(S)	MODEL(S)	ADDITIONAL INFORMATION
2013	CT200H, IS250, IS350	
2013 - 2014	ES300H, ES350, GS350, GS450H, IS F, LS460, LS600H	
2013 - 2015	IS250C, IS350C, LX570, RX350, RX450H	

SUPERSESSION NOTICE

The information contained in this bulletin supersedes SB No. L-SB-0074-14.

- The Parts Information, Required Tools & Equipment, and On-Vehicle Data Navigation Update sections have been updated.

Service Bulletin No. L-SB-0074-14 is obsolete and any printed versions should be discarded. Be sure to review the entire content of this bulletin before proceeding.

Introduction

Lexus models equipped with the HDD Navigation (EMV-N) system require a Special Service Tool (SST) USB drive to update the map, points of interest, Gracenote®, and system software. The SST is used with all vehicles to deliver the update; however, a unique activation number is required for each vehicle. Activation numbers are provided in an Activation Card Number pamphlet available through the normal parts ordering system. Use the process described in this bulletin to perform the update.

NOTE

- Gracenote® information **MUST** be updated at the same time as map data. This data is included on the map data SST.
- Map data will be released annually through the shipment of a USB drive SST to each dealer. The SST **MUST** be stored in the SST cabinet to ensure that it can be easily found.

HDD Navigation Map Update Process (EMV-N)

Warranty Information

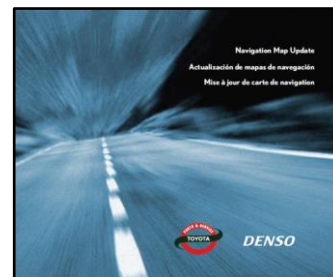
OP CODE	DESCRIPTION	TIME	OFF	T1	T2
N/A	Not Applicable to Warranty	–	–	–	–

Parts Information

PART NUMBER	PART NAME	QTY
PT219-HDD07-17	ACN NAV UPDTE V.17.1 (Pamphlet)	1

NOTE

The pamphlet is green with Lexus and Denso labels on the front cover.



Required Tools & Equipment

SPECIAL SERVICE TOOLS (SST)	PART NUMBER	QTY
USB Drive Navigation Map Update – Denso*	LEXD-HDD07-17	1

* Essential SST.

NOTE

Additional SSTs may be ordered by calling 1-800-933-8335.

On-Vehicle Data Navigation Update

- Update Gracenote® information using Service Bulletin [L-SB-0169-17](#), “HDD Navigation Gracenote Database Update Process (EMV-N).”

HINT

Connect a battery charger to the vehicle prior to beginning the process to ensure constant battery voltage.

- Log in to the Technical Information System (TIS).

HDD Navigation Map Update Process (EMV-N)

On-Vehicle Data Navigation Update (Continued)

3. Log into the Navigation Update Wizard.
 - A. Click on the *TIS* tab.
 - B. Click on the *Diagnostics* tab.
 - C. Click on the *Navigation* tab.
 - D. Re-enter your password.
 - E. Click *Login*.

Figure 1.



4. Select *Denso* from the “Select Navigation Manufacturer” dropdown.

Figure 2.



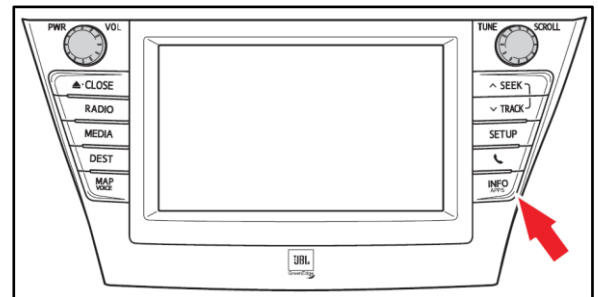
5. Enter the activation card number from the inside of the pamphlet.

Figure 3.



6. Click *Submit*.
7. Press the “ENGINE START STOP” switch two times with the brake pedal released to cycle the ignition to the ON position (Engine/Hybrid system OFF).
8. Note the head unit style to determine how to get to the “Map Data” screen.
 - A. Press the *INFO APPS* button on the navigation head unit.

Figure 4.



HDD Navigation Map Update Process (EMV-N)

On-Vehicle Data Navigation Update (Continued)

- B. Press *Menu* on the remote touchpad, then select *Info/Apps*.

Figure 5.



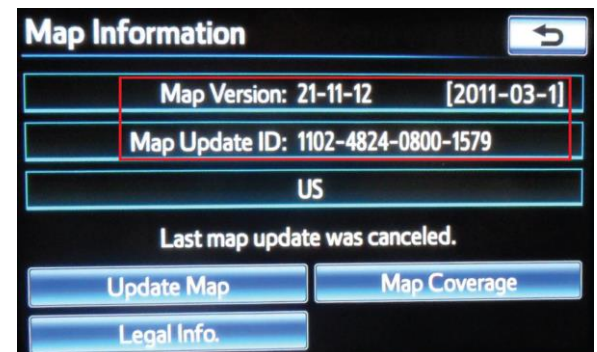
9. Select *Map Data* on the navigation screen.

Figure 6.



10. Record the map version and map update ID from the navigation screen.

Figure 7.



HDD Navigation Map Update Process (EMV-N)

On-Vehicle Data Navigation Update (Continued)

11. Enter navigation data into the Navigation Update Wizard form.
 - A. Select the correct USB part number (found on the SST packaging, starts with "LEXD").
 - B. Input the map update ID into TIS (without hyphens).
 - C. Input the map version into TIS.
 - D. Enter the VIN.
 - E. Enter the repair order number.
 - F. Click *Submit*.
12. Check off each item AFTER confirming that it is correct. If ANY of the information is incorrect, click the *Back* button.
13. Click *Confirm*.
14. Note the license key that is generated. (Print this page if necessary.)

Figure 8.

Navigation Update Wizard

Please complete the following fields to receive a license key.

Dealer Code: 60905
 Dealer Name: JM Lexus
 Technician Name: John Smith
 Navigation Manufacturer: Denso
 Activation Card Number: LEXD00000123456

*USB Stick P/N: LEXD-HDD07-12
 *Map Update ID: 1102462200002222
 *Map Version: 21-11-24 2011-06-1
 *VIN: JTHCE1BL9D5000131
 *Repair Order Number: 123456

(*) - Indicates Required Field(s)

Back Clear Submit

Figure 9.

Navigation Update Wizard

You are about to update the Navigation Map. Please confirm the following by checking each box below.

☒ You have USB Stick P/N LEXD-HDD07-12
☒ You have entered Map Update ID 1102462200002222
☒ You have entered Map Version 21-11-24 2011-06-1
☒ VIN is JTHCE1BL9D5000131

Back Confirm

Figure 10.

Navigation Update Wizard

Thank you John Smith. This license key is valid for one update. Please bring this page for your reference.

Your License Key is: 20202020

Please use this license key with USB Stick: PN - LEXD-HDD07-12

Map Update ID: 1102462200002222
 New Map Version: 21-11-24 2012-21-1

Navigation Update Vehicle Details

VIN: JTHCE1BL9D5000131
 Repair Order Number: 123456
 Dealer: 60905

Click here to return to the Navigation homepage Print

15. Insert the USB drive SST into the USB port of the vehicle (usually located under the navigation head unit, in the center console/armrest, or glove box).
16. Select *Update Map* on the navigation screen.

Figure 11.

Map Information

Map Version: 21-11-24 [2011-06-1]
 Map Update ID: 1102-4824-0800-1579
 US

Last map update was completed.

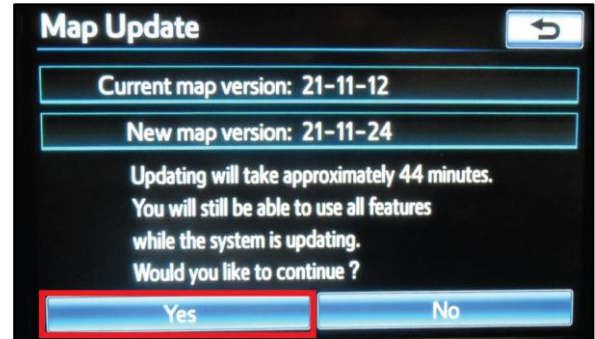
Update Map Map Coverage
 Legal Info

HDD Navigation Map Update Process (EMV-N)

On-Vehicle Data Navigation Update (Continued)

17. Select Yes.

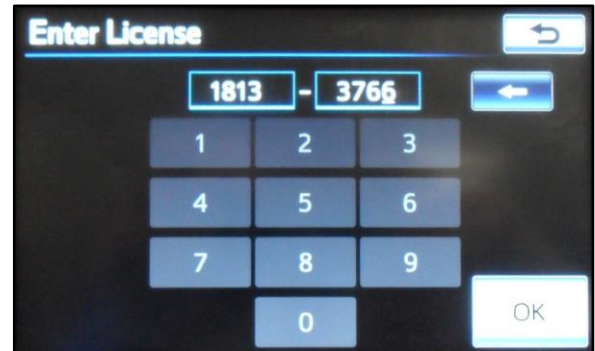
Figure 12.



18. Enter the license key from step 14.

19. Select OK.

Figure 13.



20. Update the navigation head unit software. Select Yes on the “Software Update” screen to accept and begin this update.

If the head unit displays the “Map Update” screen, go to step 21.

NOTE

Navigation map data will be loaded when this process completes.

Figure 14.

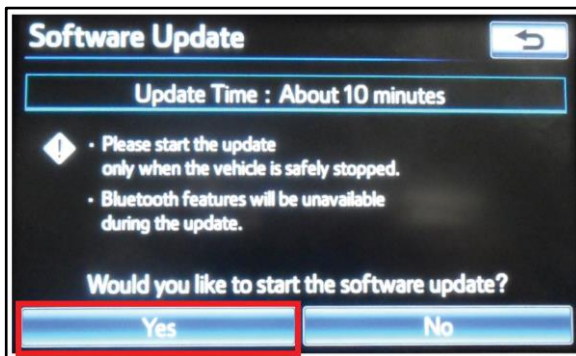
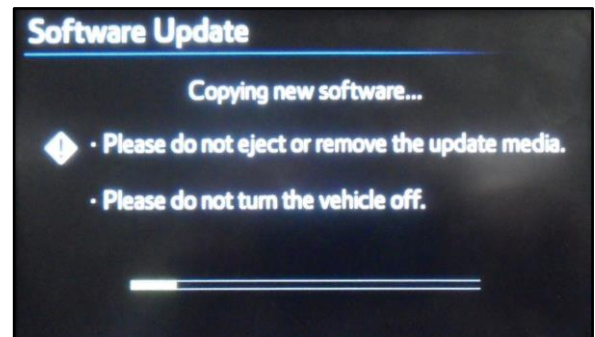


Figure 15.

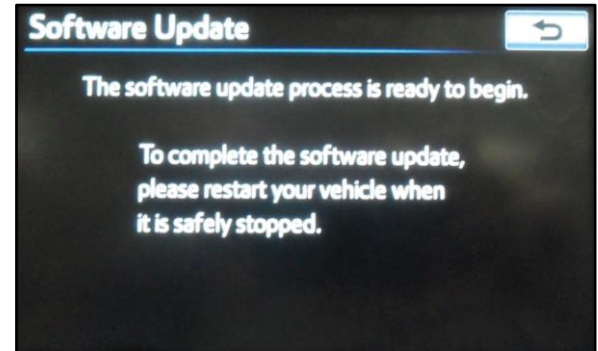


HDD Navigation Map Update Process (EMV-N)

On-Vehicle Data Navigation Update (Continued)

- A. Cycle ignition OFF, then ON (Ready OFF/Engine OFF).

Figure 16.

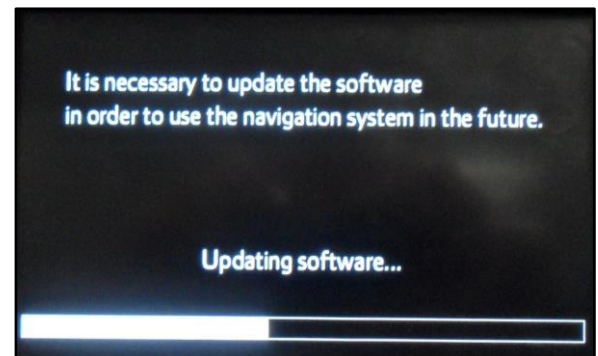


- B. Allow the update to complete.

NOTE

This process will take approximately 10 minutes.

Figure 17.



- C. The head unit will prompt to cycle ignition. Cycle ignition OFF and then ON (Ready OFF/Engine OFF).

- D. Press the *INFO APPS* button.

Figure 18.



- E. Select "Map Data" on the navigation screen.

HDD Navigation Map Update Process (EMV-N)

On-Vehicle Data Navigation Update (Continued)

21. The navigation map update will begin automatically.

NOTE

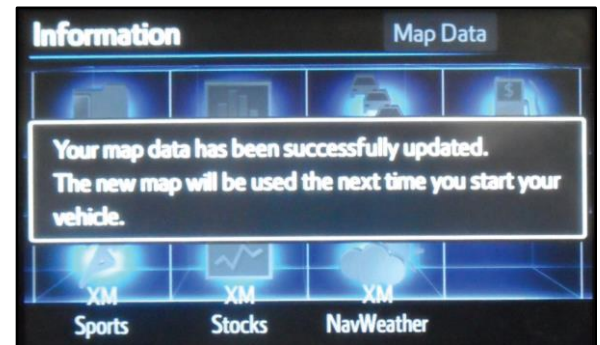
This process will take approximately 45 minutes.

Figure 19.



22. The NEW map data will be available AFTER the ignition is cycled. Cycle ignition OFF, then ON (Ready OFF/Engine OFF).

Figure 20.



23. The map update is complete.

Figure 21.



24. Verify navigation operation.