


eOwner's Manual (eOM) Installation

Service Category Audio/Visual/Telematics

Section Audio/Video

Market USA

Lexus Supports
ASE Certification 

Applicability

YEAR(S)	MODEL(S)	ADDITIONAL INFORMATION
2018	LC500, LC500H, LS500, LS500H, NX300, NX300H	

REVISION NOTICE

October 10, 2017 Rev2:

- **Applicability has been updated to include 2018 model year LS 500 and LS 500h vehicles.**
- **The Software Information section has been updated.**

September 20, 2017 Rev1:

- **Applicability has been updated to include 2018 model year NX 300 and NX 300h vehicles.**
- **The Introduction and Software Information sections have been updated.**

Any previous printed versions of this bulletin should be discarded.

Introduction

Some 2018 model year Lexus vehicles are equipped with an eOwner's Manual (eOM), which is installed into the head unit while the vehicle is in transit. **During Pre-Delivery Service (PDS), follow the instructions contained within the Software Confirmation section of this bulletin to ensure that the software has been installed correctly.** If it is found that the software is not installed correctly, proceed to the Software Installation section of this bulletin.

It may also be necessary to reinstall the eOM software after replacing the head unit. Refer to the Software Confirmation section of this bulletin to determine whether or not the software is already installed. If the software is not installed, proceed to the USB Drive Preparation and Software Installation sections of this bulletin.

Warranty Information

OP CODE	DESCRIPTION	TIME	OFF	T1	T2
N/A	Not Applicable to Warranty	–	–	–	–

eOwner's Manual (eOM) Installation

Required Tools & Equipment

REQUIRED MATERIALS	QTY
Blank USB Drive w/Storage Capacity of 256MB or Greater	1

NOTE

The USB drive **MUST** meet the following specifications:

- USB communication formats: USB 2.0 HS (480 Mbps) and FS (12 Mbps)
- File formats: FAT 16/32
- Correspondence class: Mass storage class

Software Information

MULTIMEDIA TYPE	MODEL	MULTIMEDIA FILE NAME
eOM Installation Files	LC 500/500h	18LC eOM Installation.zip
	LS 500	18LS eOM Installation.zip
	LS 500h	18LSH eOM Installation.zip
	NX 300	18NX eOM Installation.zip
	NX 300h	18NXH eOM Installation.zip
eOM Removal Files	All	eOM Removal.zip

NOTE

- The zip file **MUST** be extracted to the USB drive. Do **NOT** copy the zip file to the USB drive.
- The USB drive **MUST ONLY** contain four installation files **OR** four removal files (the same drive **CANNOT** be used for both).
- The USB drive **MUST NOT** contain **ANY** other files.
- The software CD that is stored with the printed Owner's Manual is included as a backup copy, which is intended for customer use.

eOwner's Manual (eOM) Installation

Software Confirmation

1. Cycle the ignition switch to “IG-ON.”
2. Once the head unit is booted up, press the *Menu* button and use the touchpad to navigate to “INFO.”
3. Select *eOwner's Manual* from the bottom left side of the screen. The eOM should launch.

Figure 1.

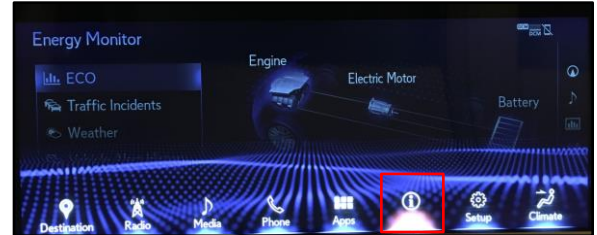


Figure 2.

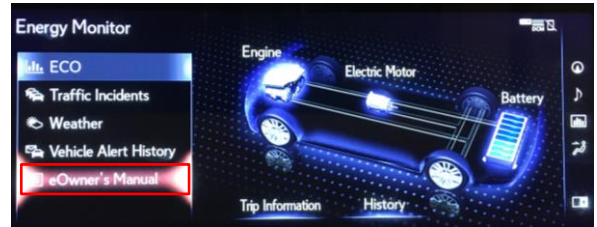
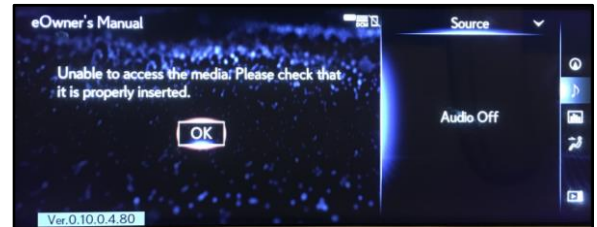


Figure 3.



NOTE
 If the screen to the right appears, eOM software is NOT installed. Proceed to USB Drive Preparation and then Software Installation.

USB Drive Preparation

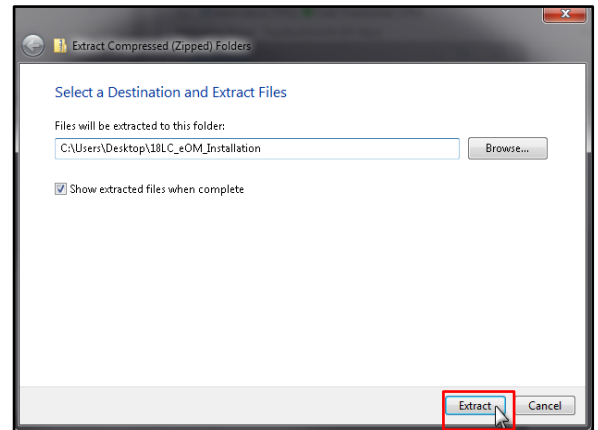
1. Select the appropriate download link from the Software Information section of this bulletin and save the zip file to your computer's desktop.
2. Insert a blank USB drive with a capacity of 256MB or greater into your computer.

eOwner's Manual (eOM) Installation

USB Drive Preparation (Continued)

3. Right click the zip file that you downloaded to your desktop, click "Extract All," and then click *Extract*.

Figure 4.

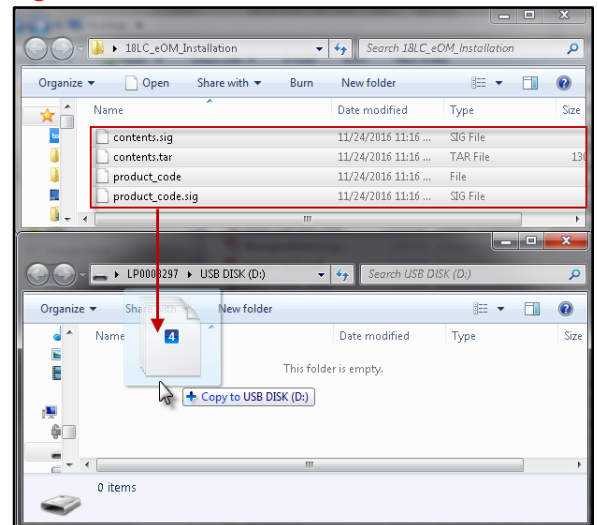


4. Navigate to and open the extracted folder, which will have the same title and be in the same location as the zip file.
5. Open the USB drive and copy the four files from the extracted folder to the blank USB drive.

NOTICE

Do NOT open the four files from the extracted folder. Opening will damage the files.

Figure 5.



6. Delete files from desktop.

eOwner's Manual (eOM) Installation

Software Installation

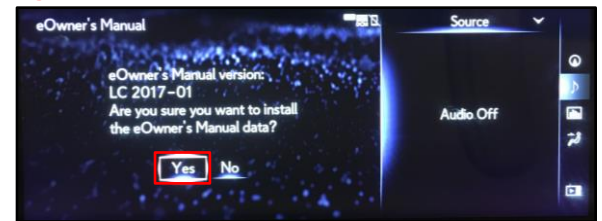
1. Insert the USB drive into either USB port under the armrest.

NOTE

Refer to the **Software Information** section of this bulletin for the installation and removal files.

2. Perform steps 1 – 3 from the Software Confirmation section of this bulletin. Once the USB drive is inserted, an install prompt will appear. Click Yes.

Figure 6.



3. Once the process is complete, click OK.

Figure 7.



NOTE

- The eOM should automatically launch following the software installation. If the eOM does NOT launch, repeat the installation process, ensuring to follow each step carefully.
- If the eOM does NOT install properly after the second attempt, diagnose the vehicle using the Repair Manual.

Software Removal

Software removal steps are the same as software installation steps, except that the screen to the right will appear in place of Figure 6 when the eOM removal USB drive is inserted.

Figure 8.

