

Spot Corrosion on B-Pillar and/or C-Pillar

Service Category Vehicle Exterior

Section Paint/Coatings

Market USA

Toyota Supports
 ASE Certification 

Applicability

YEAR(S)	MODEL(S)	ADDITIONAL INFORMATION
2012 - 2015	Tacoma	WMI(s): 3TM, 5TF

Introduction

Some 2012 – 2015 model year Tacoma vehicles may exhibit rust spots on the B-pillar and/or C-pillar (double cab only) area on either or both driver and passenger side.

Repairing/repainting and installation of paint protective films in the affected areas will be required to address this condition. The paint repair may need to be sublet to a body shop. Share this Service Bulletin information with your sublet body shop.

NOTE

If this condition is present in AT LEAST 1 door, ALL doors MUST receive paint protective film.

Warranty Information

OP CODE	CABIN TYPE	DESCRIPTION	TIME	OFF	T1	T2
BD1621	Single	Repaint Front Door, RH	1.8*	67111-04060 67112-04070	69	86
BD1621A		Repaint Front Door, LH	1.8*			
BD1621B		Install Paint Protective Film	0.3			
BD1622	Access	Repaint Front Door, RH	1.8*	67111-04060 67112-04070 67113-04031 67114-04031		
BD1622A		Repaint Front Door, LH	1.8*			
BD1623		Repaint Rear Door, RH	1.8*			
BD1623A		Repaint Rear Door, LH	1.8*			
BD1622B BD1623B		Install Paint Protective Film	0.3			

Spot Corrosion on B-Pillar and/or C-Pillar

Warranty Information (Continued)

OP CODE	CABIN TYPE	DESCRIPTION	TIME	OFD	T1	T2	
BD1624	Double	Repaint Front Door, RH	1.8*	67111-04060 67112-04070 67113-04020 67114-04020	69	86	
BD1624A		Repaint Front Door, LH	1.8*				
BD1625		Repaint Rear Door, RH	1.8*				
BD1625A		Repaint Rear Door, LH	1.8*				
BD1624B		Install Paint Protective Film					0.6
BD1625B							

*2.8 for BOTH sides or 5.6 max for ALL 4 panels.

- Sublet cost for paint material in case of in-house paint shop.
- Sublet invoice from third party (external paint shop) in case of no in-house paint shop.

APPLICABLE WARRANTY

- This repair is covered under the Toyota Corrosion Perforation Warranty. This warranty is in effect for 60 months or (unlimited mileage) from the vehicle's in-service date.
- Warranty application is limited to occurrence of the specified condition described in this bulletin.

Parts Information

CAB TYPE	PART NUMBER	PART NAME	QTY
Single	67855-04030	Protector, FR Door Panel, RH	1
	67856-04030	Protector, FR Door Panel, LH	1
Access	67855-04030	Protector, FR Door Panel, RH	1
	67856-04030	Protector, FR Door Panel, LH	1
Double	67855-04030	Protector, FR Door Panel, RH	1
	67856-04030	Protector, FR Door Panel, LH	1
	67857-04010	Protector, RR Door Panel, RH	1
	67858-04010	Protector, RR Door Panel, LH	1

Spot Corrosion on B-Pillar and/or C-Pillar

Repair Procedure

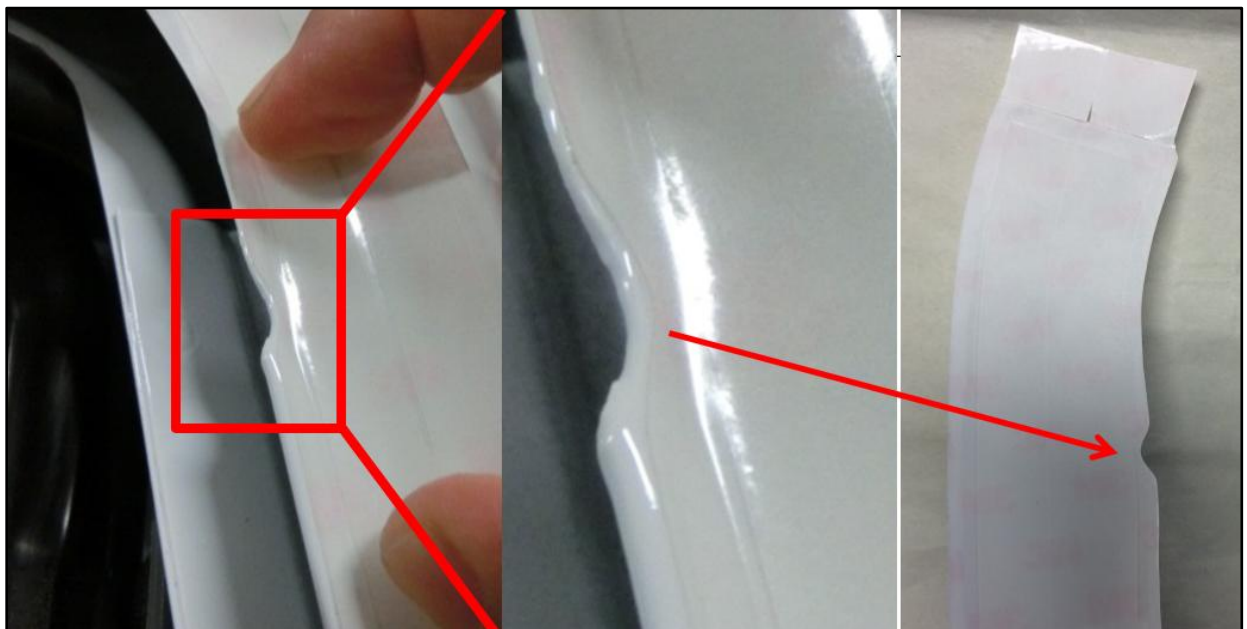
1. Inspect the vehicle for rust spots.
Are ANY rust spots present on the B- or C-pillar area?
 - **YES** — Sublet to a body shop for repair, then continue to step 2.
 - **NO** — This bulletin does NOT apply. Continue diagnosis using the applicable Repair Manual.
2. Open the window and partially remove the door glass run as shown.

Figure 1.



3. Clean the surface with mild soap and water to remove ANY dirt and debris, then wipe dry.
4. Confirm tape application position by fitting shape to window frame. Use the positioning marker on the door to line up with the positioning marker on the pre-cut paint protective film.

Figure 2.



Spot Corrosion on B-Pillar and/or C-Pillar

Repair Procedure (Continued)

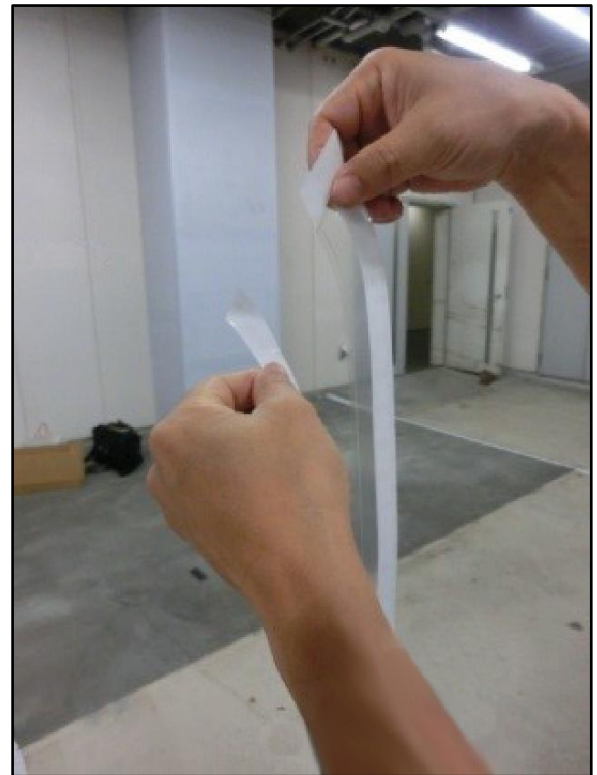
5. Peel off the front half of the white tape backing paper from the paint protective film.

NOTE

Apply water to your hands before handling the film. It's important to keep hands wet while working with the film.

6. Apply water to the sticky surface of the film to ensure that the film can be repositioned during installation.

Figure 3.



7. Attach the front half of the paint protective film to the door. Align the position markers on the paint protective film with the position markers on the door as shown in Step 4.

Figure 4.



Spot Corrosion on B-Pillar and/or C-Pillar

Repair Procedure (Continued)

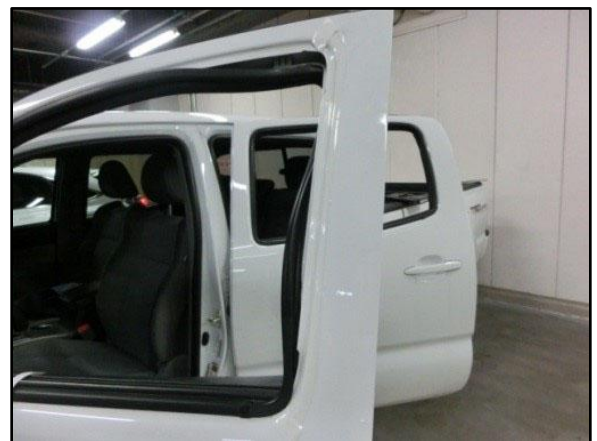
8. Remove ALL water and air bubbles trapped under the paint protective film using a plastic spatula or similar tool.

Figure 5.



9. Remove the remaining backing paper.
10. Apply water to the newly exposed paint protective film to make sure that the film can be adjusted during installation.
11. Attach the remaining paint protective film to the door. Remove ALL water and air bubbles by using a plastic spatula or a similar tool.

Figure 6.



Spot Corrosion on B-Pillar and/or C-Pillar

Repair Procedure (Continued)

12. Remove the backing film from the top surface of the paint protective film.

Figure 7.



13. Reinstall the door glass run.
14. Confirm the repair.
15. Repeat steps 1 – 14 for ALL doors.

NOTE

For double cab, apply this Repair Procedure to the C-pillar area.

16. After the Repair Procedure is complete, notify the customer of the following:
 - Do NOT use a carwash for AT LEAST 24 hours AFTER installation.
 - Keep the vehicle out of the rain for AT LEAST 24 hours AFTER installation.
 - Keep the vehicle in stable temperature for AT LEAST 24 hours AFTER installation.