

Tonneau Cover Strap Replacement Procedure

Service Category Vehicle Exterior

Section Exterior Panels/Trim

Market USA

Toyota Supports
ASE Certification 

Applicability

YEAR(S)	MODEL(S)	ADDITIONAL INFORMATION
2016 - 2017	Tacoma	

Introduction

Some 2016 – 2017 model year Tacoma vehicles equipped with a tonneau cover now have a replacement strap available (see Figure 1). Previously, if the strap was cut or damaged, it was a non-serviceable part. Follow the procedure below to replace a damaged strap.

Figure 1.



Tonneau Cover Strap Replacement Procedure

Production Change Information

This bulletin applies to vehicles produced **BEFORE** the Production Change Effective VINs shown below.

MODEL	PLANT	DRIVETRAIN	PRODUCTION CHANGE EFFECTIVE VIN
Tacoma	TMMTX	2WD	5TFRX5GN#GX073375
			5TFAX5GH#GX073380
			5TFAZ5CN3GX020810
			5TFBZ5DN#GX001778
			5TFEZ5CN#GX020823
			5TFRZ5CN#GX020821
		4WD	5TFSX5EN#GX047105
			5TFCZ5AN#GX045730
			5TFSZ5AN#GX045740
			5TFDZ5BN#GX013296
	TMMBC	2WD	5TFGZ5AN#GX045786
			3TMAZ5CN#HM026739
			3TMBZ5DN#HM005963
		4WD	3TMEZ5CN#HM026830
			3TMCZ5AN#HM045106
		3TMDZ5BM#HM013420	
		3TMGZ5AN#HM045262	

Warranty Information

OP CODE	DESCRIPTION	TIME	OFF	T1	T2
BD1632	R & R Tonneau Cover Straps	0.8	N/A	62	12

APPLICABLE WARRANTY

- This repair is covered under the Toyota Basic Warranty. This warranty is in effect for 36 months or 36,000 miles, whichever occurs first, from the vehicle's in-service date.
- Warranty application is limited to occurrence of the specified condition described in this bulletin.

Tonneau Cover Strap Replacement Procedure

Parts Information

PART NUMBER		PART NAME	QTY
PREVIOUS	NEW		
N/A	64919-04010	Buckle, Tonneau Cover	2

Required Tools & Equipment

REQUIRED TOOLS & MATERIAL	QUANTITY
Vacuum	1
#11 (0.1910") Drill Bit	1
Hydraulic Rivet Nut Tool, or Equivalent	1

Repair Procedure

1. Open the tonneau cover to the fully open position.
2. Remove the existing rivet head with a #11 (0.1910") drill bit as shown.

NOTE

If the rivet head spins while drilling, use a pair of pliers to stop the rivet from spinning (see Figure 2.)

Figure 2.

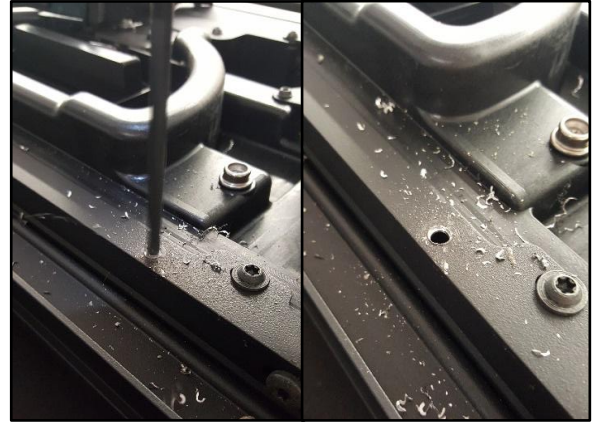


Tonneau Cover Strap Replacement Procedure

Repair Procedure (Continued)

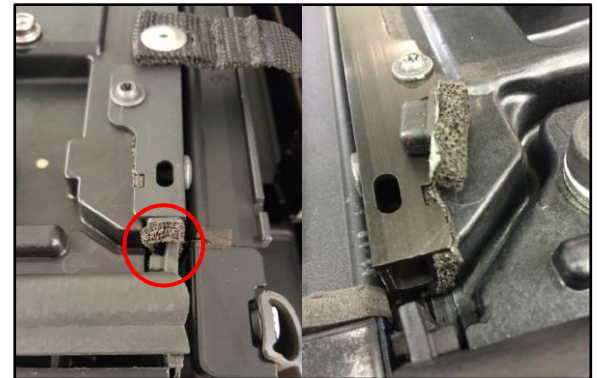
3. Remove the existing rivet sleeve with a #11 (0.1910") drill bit as shown. (This will create a larger hole, which is required for the NEW, larger rivet.)

Figure 3.



4. Remove the end cap from the hinge base as shown.

Figure 4.



5. Use a vacuum to collect leftover metal shards and rivet remains on top and inside of the hinge base as shown.

Figure 5.



CAUTION

Ensure ALL metal shards are collected BEFORE continuing to step 6.

1 Front

Tonneau Cover Strap Replacement Procedure

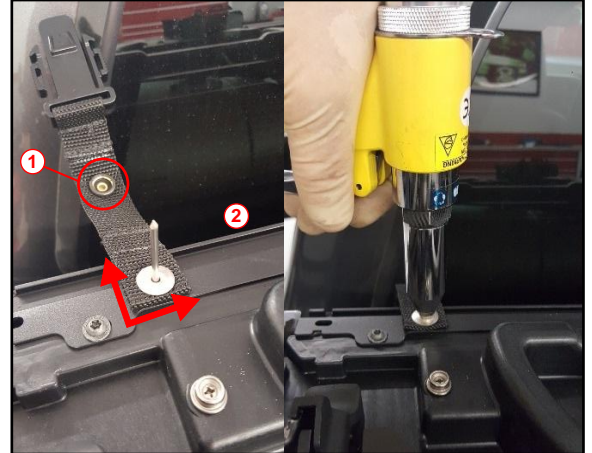
Repair Procedure (Continued)

6. Install the replacement Tonneau Cover Buckle and rivet as shown. The buckle will face toward the front of the vehicle (perpendicular to the tonneau cover) and the snap button on the buckle will be facing up.

NOTE

Ensure the buckle is facing the correct direction BEFORE installing the rivet. The buckle will NOT rotate once installed. If installed incorrectly, a NEW buckle and rivet will be required.

Figure 6.



1	Snap Button Direction
2	Front

7. Check that the buckle can be inserted securely into the tonneau cover and that the snap button on the buckle can be attached to the tonneau cover as shown.

Figure 7.



1	Front
---	-------

Figure 8.



1	Snap Button Attached
---	----------------------

8. Repeat steps 2 – 7 for the other side.
9. Reinstall both hinge base end caps.