

TECHNICAL INSTRUCTIONS

FOR

SPECIAL SERVICE CAMPAIGN H0D

CERTIFICATION LABEL

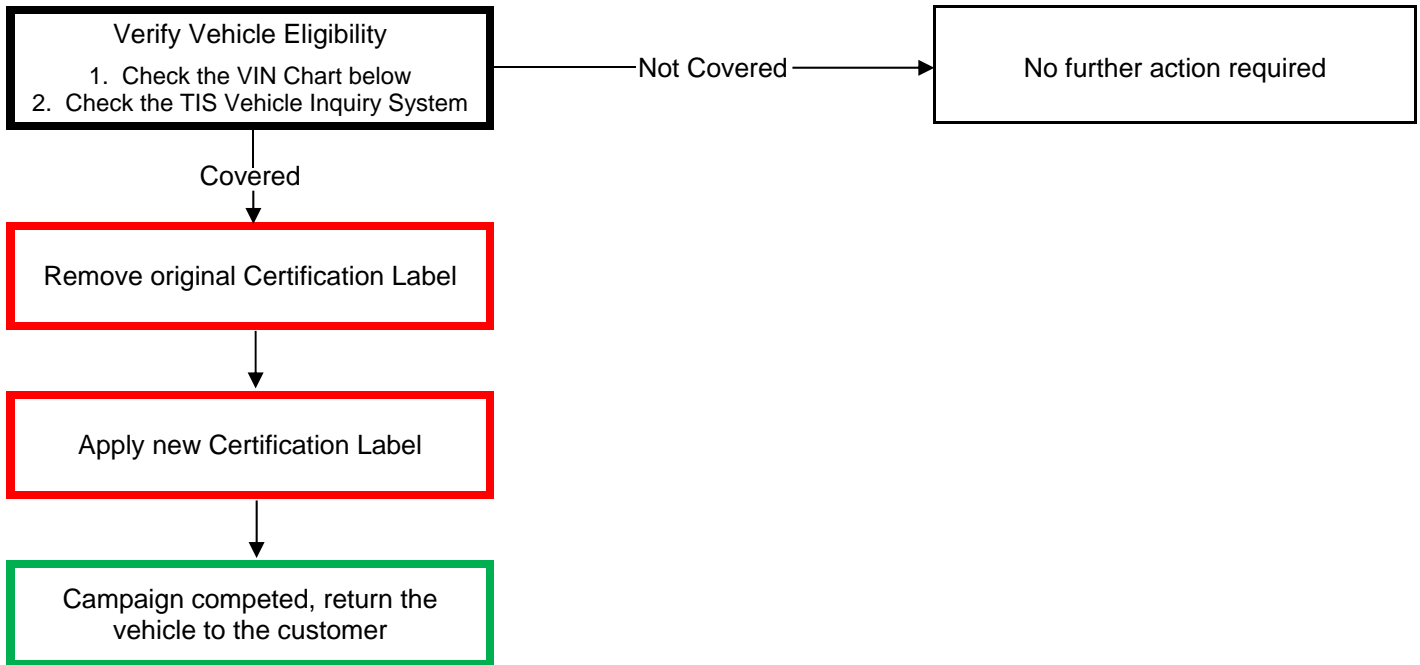
**CERTAIN 2016 SCION iA
&
2017 TOYOTA YARIS iA**

The repair quality of covered vehicles is extremely important to Toyota. All dealership technicians performing this recall are required to successfully complete the most current version of the E-Learning course “Safety Recall and Service Campaign Essentials”. To ensure that all vehicles have the repair performed correctly; technicians performing this recall repair are required to currently hold at least one of the following certification levels:

- Certified Technician (any specialty)
- Expert Technician (any specialty)
- Master Technician
- Master Diagnostic Technician

It is the dealership’s responsibility to select technicians with the above certification level or greater to perform this recall repair. Carefully review your resources, the technician skill level, and ability before assigning technicians to this repair. It is important to consider technician days off and vacation schedules to ensure there are properly trained technicians available to perform this repair at all times.

I. OPERATION FLOW CHART



II. IDENTIFICATION OF AFFECTED VEHICLES

- Check the TIS Vehicle Inquiry System to confirm the VIN is involved in this Safety Recall, and that the Campaign has not already been competed prior to dealer shipment or by another dealer.
- TMS warranty will not reimburse dealers for repairs completed on vehicles that are not affected or were completed by another dealer.

III. PREPARATION

A. PARTS

Part Number	Part Description	Quantity
n/a	Certification Label	1

Note: The replacement label will NOT be ordered through the parts system. The label will be mailed from the Toyota Call Center to your dealership. Talk with your SM or ASM for help locating the label.

B. TOOLS & EQUIPMENT

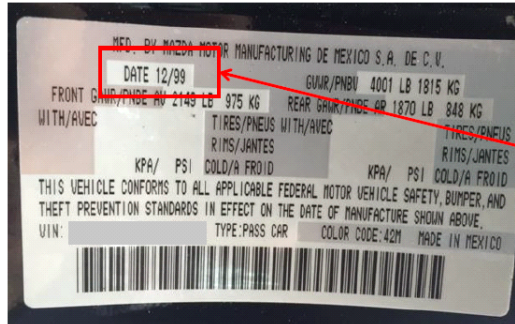
- Plastic Scraper
- Heat gun

C. MATERIALS

- 3M General Purpose Adhesive Cleaner (P/N 08984) or equivalent

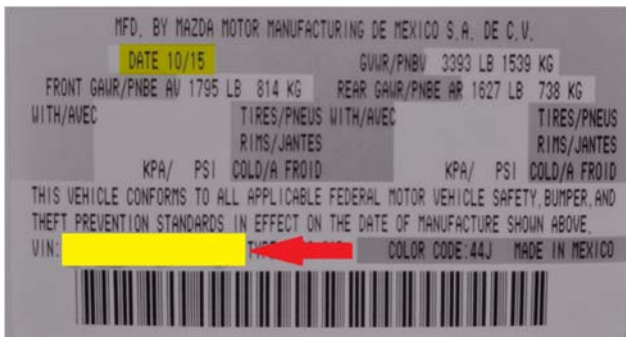
IV. BACKGROUND

The Certification Label on the involved vehicles was printed with an incorrect production date.



DATE(Prod. Date)
NG:12/99

V. WORK PROCEDURE



1. INSPECT THE **NEW** CERTIFICATION LABEL
 - a. Verify that the **NEW** label has the correct VIN number for the vehicle.



If the **NEW** Certification Label does not have the correct VIN, do **NOT** proceed with this procedure.



2. LOCATE THE ORIGINAL CERTIFICATION LABEL
 - a. The label is located in the driver's door jamb. Other than the production date, the label should be identical.



The original label **MUST** be removed and the **NEW** label **MUST** be affixed directly to the body. Placing the **NEW** label on top of the old label **IS NOT** acceptable.



3. REMOVE THE ORIGINAL CERTIFICATION LABEL

- a. Heat the original Certification Label evenly using a heat gun.

NOTE:

- It might take approximately 1 to 2 minutes, depending on the type of heat gun being used, to heat the label sufficiently.



When removing the certification label, use extreme caution to prevent damage to the paint and any other labels.



- b. While continuing to apply heat, peel the label using a plastic scraper. Take caution to prevent damaging the paint.

NOTE:

- **DO NOT** use any type of metal scraper to remove the label.
- If the label does not come off in 2 or 3 large pieces, the label may not be heated up enough.



- c. Using 3M General Purpose Adhesive Cleaner (P/N 08984) or equivalent, wipe down the affected area completely to remove all remaining residue of the original Certification Label.



4. INSTALL THE **NEW** CERTIFICATION LABEL

- a. Place the **NEW** certification label on the panel in the same location as the original label.

NOTE: Confirm there are no bubbles or creases when installing the **NEW** label.



The original label *MUST* be removed and the **NEW label *MUST* be affixed directly to the body. Placing the **NEW** label on top of the original label *IS NOT* acceptable.**

◀ VERIFY REPAIR QUALITY ▶

- Verify the **NEW** Certification Label has good adhesion to the vehicle door jamb
- Verify the **NEW** Certification Label has been completely pressed into place so that it can't be removed.

If you have any questions regarding this update, please contact your regional representative.

VI. APPENDIX

A. PARTS DISPOSAL

As required by Federal Regulations, please make sure all recalled parts (original parts) removed from the vehicle are disposed of in a manner in which they will not be reused, **unless requested for parts recovery return.**

B. CAMPAIGN DESIGNATION DECORDER

