

**ATTENTION:**  
GENERAL MANAGER   
PARTS MANAGER   
CLAIMS PERSONNEL   
SERVICE MANAGER

IMPORTANT - All Service Personnel Should Read and Initial in the boxes provided, right.


© 2017 Subaru of America, Inc. All rights reserved.



QUALITY DRIVEN® SERVICE

## SERVICE BULLETIN

**APPLICABILITY:** 2015-2017MY Outback Models  
2017MY Impreza 5-Door Models

**NUMBER:** 15-212-17

**DATE:** 10/30/2017

**SUBJECT:** Tonneau Cover Handle- Design Change

### INTRODUCTION:

This bulletin announces a design change of the tonneau cover assembly to address customer concerns of the handle portion coming loose. The handle has been changed to optimize retention and made available as a service part separate from the tonneau cover.

### PRODUCTION CHANGE INFORMATION:

Tonneau covers with the new handle were incorporated into production during Mid-June, 2017.

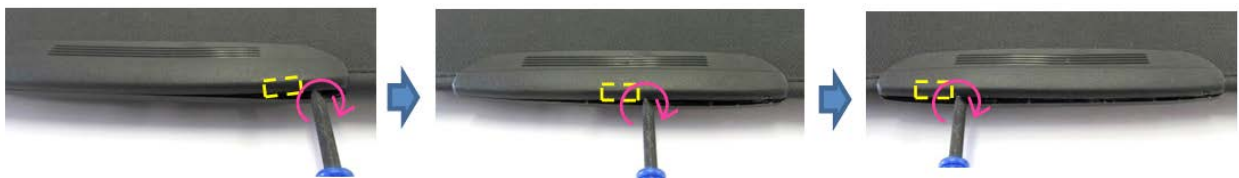
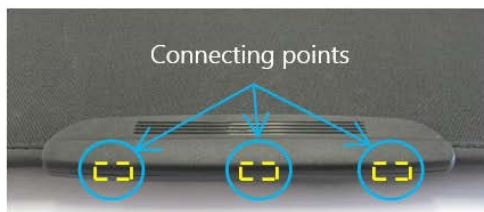
### PART INFORMATION:

The part number for the replacement handle is: **65593AL000**.

### SERVICE PROCEDURE / INFORMATION:

When receiving a customer concern of a loose or displaced tonneau cover handle, if there are no other issues with the assembly, order and install a replacement handle following the procedure and photo sequences below.

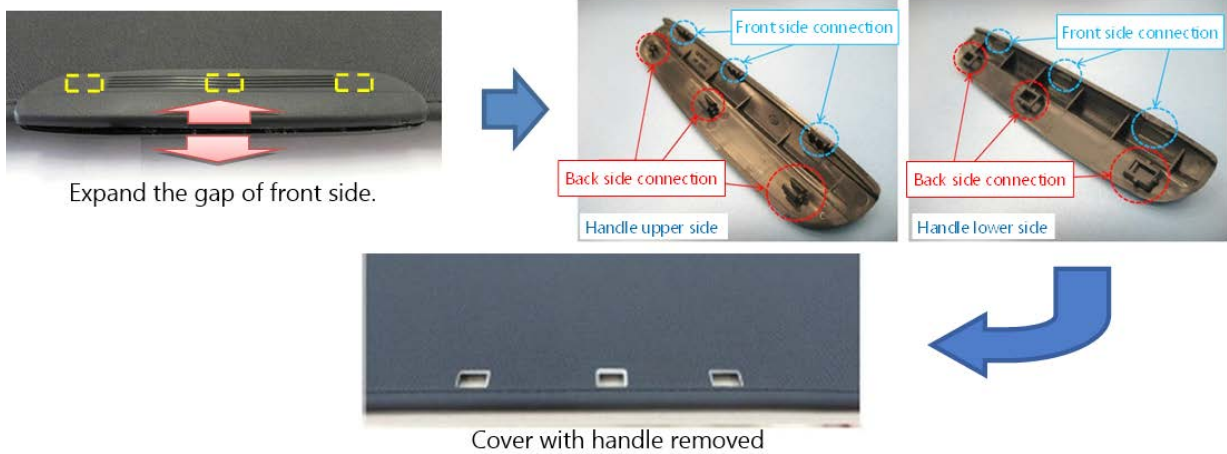
1. The handle consists of a top and bottom “half” which sandwich the tonneau cover itself. There are 6 connecting points holding the halves of the handle together. Release the 3 back side points using a plastic Trim tool.



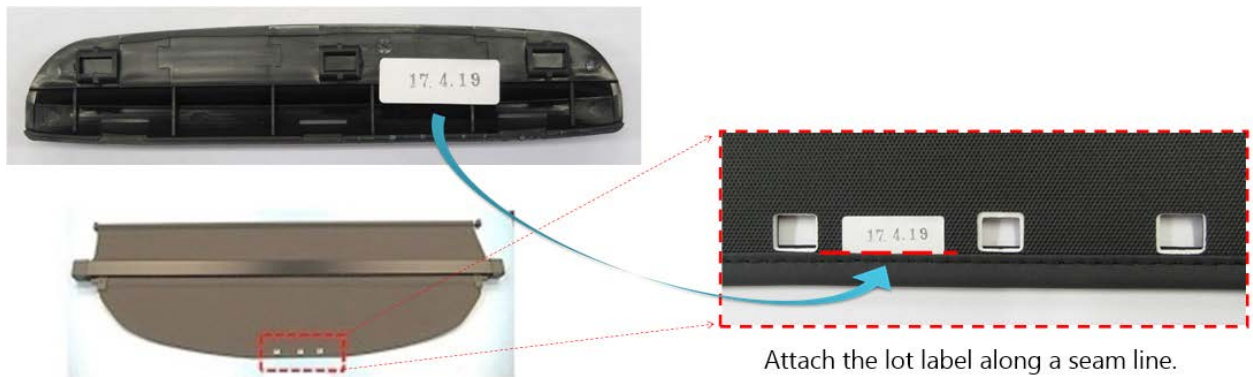
Turn the Trim tool to remove each clip.

*Continued...*

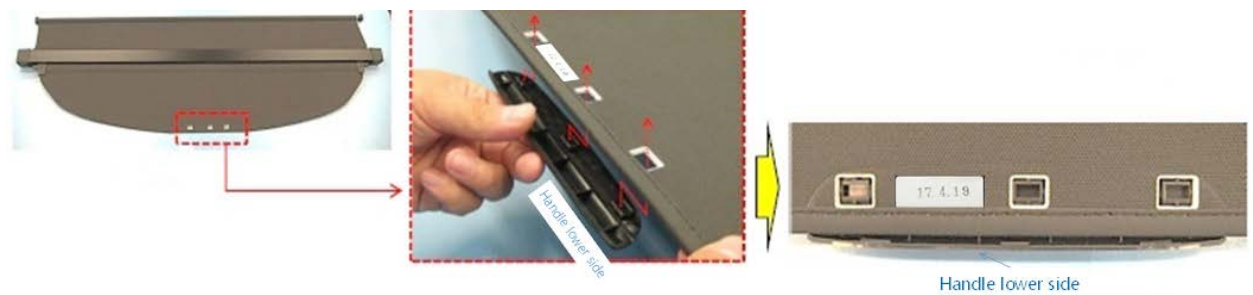
2. Expand the gap made after releasing the 3 back side connecting points to access and release the 3 front side connections located further inside the handle.



3. For future tracking purposes, transfer the lot label from the handle to the cover along the seam line.

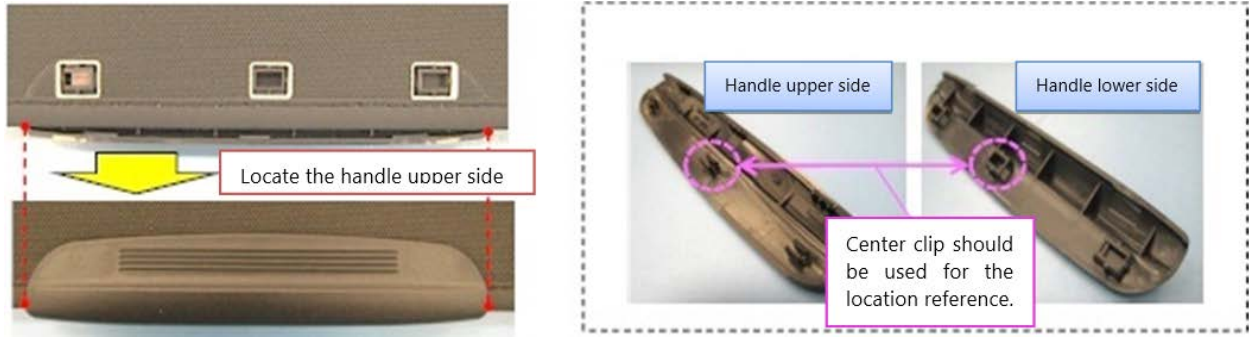


4. Assemble the new handle on the tonneau cover starting with the bottom half. Align the 3 connecting points with the 3 holes in the cover.



*Continued...*

- Align the upper half of the new handle with the 3 lower half connecting points. Use the center point as a reference for proper location.



- Clip the center connecting point closed first then each of the 2 outside points.



- Reinstall the tonneau cover assembly to complete the procedure.

#### WARRANTY / CLAIM INFORMATION:

For vehicles within the Basic New Car Limited Warranty period, this repair may be submitted using the following claim information:

Labor Description	Labor Operation #	Labor Time	Fail Code
HANDLE, TONNEAU COVER R&R	A912-206	0.3	YOF-29

#### IMPORTANT REMINDERS:

- SOA strongly discourages the printing and/or local storage of service information as previously released information and electronic publications may be updated at any time.
- Always check for any open recalls or campaigns anytime a vehicle is in for servicing.
- Always refer to STIS for the latest service information before performing any repairs.

**CAUTION: VEHICLE SERVICING PERFORMED BY UNTRAINED PERSONS COULD RESULT IN SERIOUS INJURY TO THOSE PERSONS OR TO OTHERS.**

Subaru Service Bulletins are intended for use by professional technicians ONLY. They are written to inform those technicians of conditions that may occur in some vehicles, or to provide information that could assist in the proper servicing of the vehicle. Properly trained technicians have the equipment, tools, safety instructions, and know-how to do the job correctly and safely. If a condition is described, DO NOT assume that this Service Bulletin applies to your vehicle, or that your vehicle will have that condition.

**SUBARU OF AMERICA, INC. IS ISO 14001 COMPLIANT**

ISO 14001 is the international standard for excellence in Environmental Management Systems. Please recycle or dispose of automotive products in a manner that is friendly to our environment and in accordance with all local, state and federal laws and regulations.