



FIELD SERVICE CAMPAIGN – 17114R1

03 October 2017

SUBJECT:

Predictive Cruise Control Software Update

MODELS INVOLVED:

International® LoneStar®, ProStar® and LT™ Series

DEFECT DESCRIPTION:

During certain geographic conditions the Predictive Cruise Control may revert back to the standard cruise control. To correct this issue the Predictive Cruise Control Module will require a software update.

REASON FOR REVISION:

Step number 12 has been added along with Figure 4 and Figure 5.

ELIGIBILITY:

This procedure applies ONLY to vehicles marked in the International® Service PortalSM with FSC 17114. Also complete any other open campaigns listed on the Service Portal at this time.

TOOLS REQUIRED:

Description	Tool Number
N/A	EZ-Tech®

Table 1 Tools Information

PARTS REQUIRED:

No parts are required for this procedure.

WORK INSTRUCTIONS

GOVERNMENT REGULATION: Engine fluid (oil, fuel, and coolant) may be a hazard to human health and the environment. Handle all fluid and other contaminated materials (such as filters and rags) in accordance with applicable regulations. Recycle or dispose of engine fluids, filters, and other contaminated materials according to applicable regulations.

WARNING! To prevent property damage, personal injury, and / or death, park vehicle on hard flat surface, turn the engine off, set the parking brake, and install wheel chocks to prevent the vehicle from moving in both directions.

WARNING! To prevent personal injury and / or death, always wear safe eye protection when performing vehicle maintenance.

WARNING! To prevent property damage, personal injury, and / or death, keep flames or sparks away from vehicle and do not smoke while servicing the vehicle's batteries. Batteries expel explosive gases.

1. Park vehicle on flat surface.
2. Shift transmission to Park or Neutral and set parking brake.
3. Turn Engine to Key OFF position.
4. Install wheel chocks.
5. Turn vehicle ignition to Key ON, Engine OFF position.
6. Connect EZ-Tech[®] to vehicle.
7. Verify Predictive Cruise Control software is installed on EZ-Tech[®].
 - a. If software is installed, proceed to Step 9.
 - b. If software is not installed, proceed to Step 8.

NOTE: If necessary, copy website address and paste into browser for access.

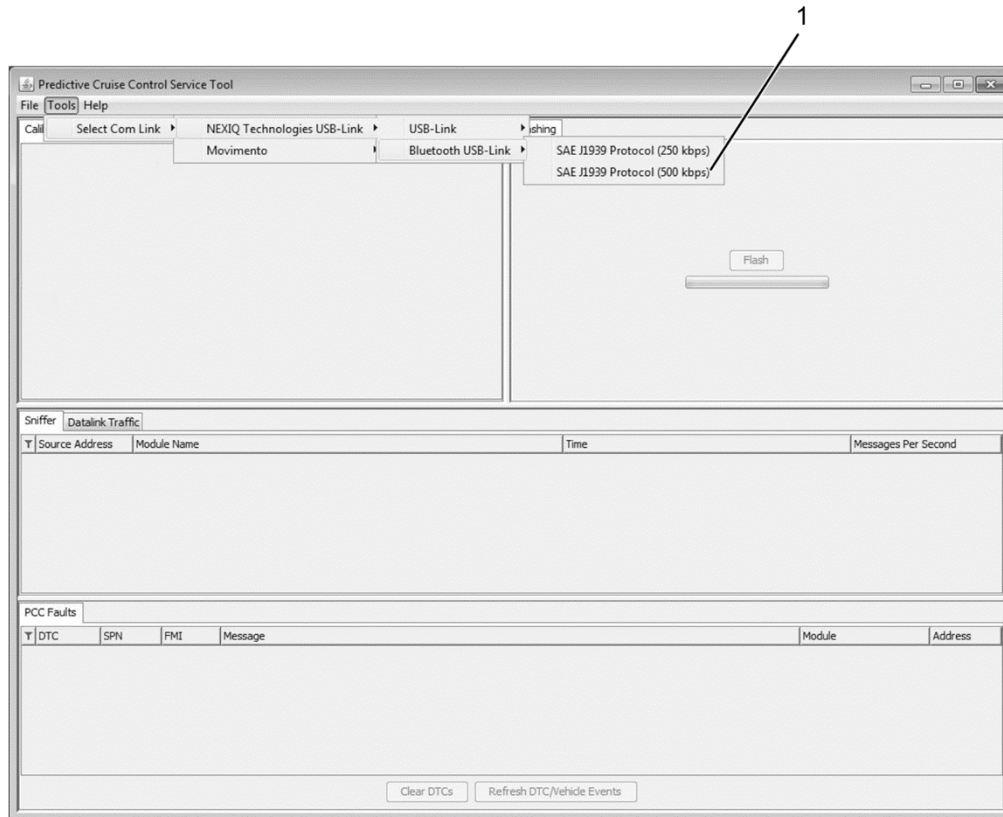
8. To download Predictive Cruise Control software update use either link listed below.
 - a. Use browser and navigate to the following file on the EZ-Tech® Download center website: http://teamsites.navistar.com/sites/EZ-TechDownloadCenter/EZTech%20Updates/Predictive_Cruise_Control_Tool.zip or select EZ-Tech® Download Center.
 - b. Use browser and navigate to the following file on Dropbox website: https://www.dropbox.com/s/bqcgci7iftcuwgo/Predictive_Cruise_Control_Tool.exe?dl=1 or select Dropbox Download Center.



0000419712

Figure 1. Predictive Cruise Control Tool icon

9. Select Predictive Cruise Control Tool icon (Figure 1) on desktop to open tool.



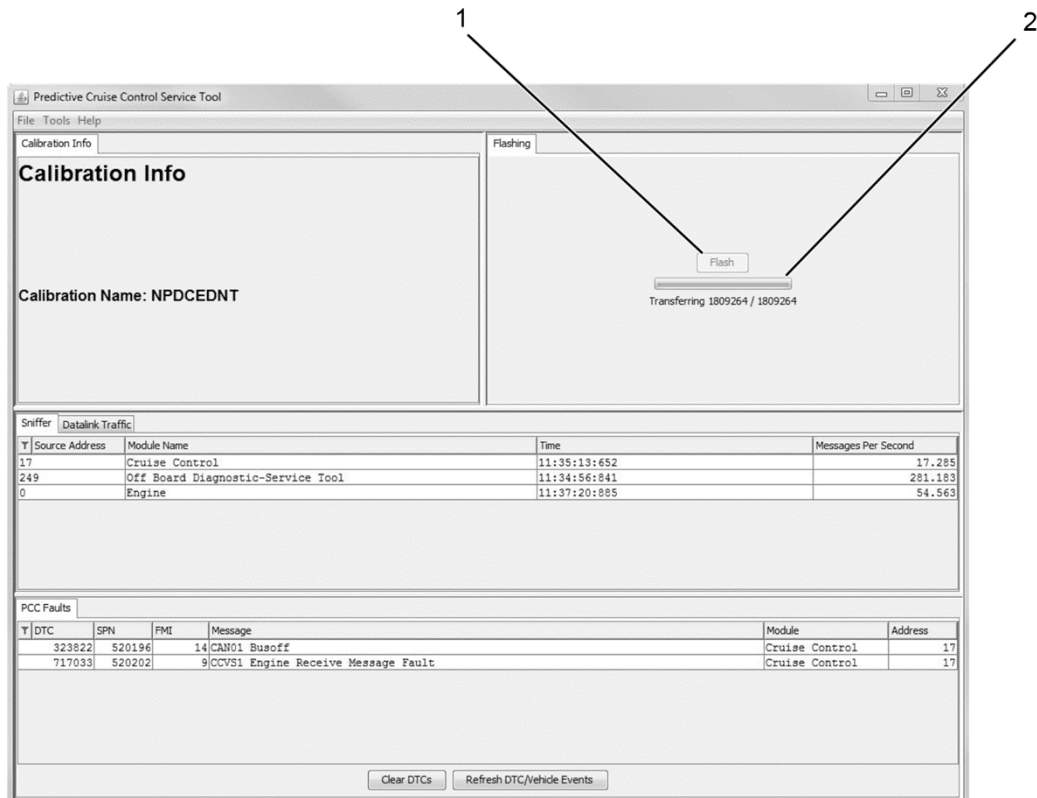
0000419713

Figure 2. Predictive Cruise Control Service Tool

1. SAE J1939 Protocol (500 kbps)

NOTE: 500K is identifiable by green diagnostic connector.

10. When Predictive Cruise Control Service tool is open, select 500 kbps (Figure 2, Item 1).



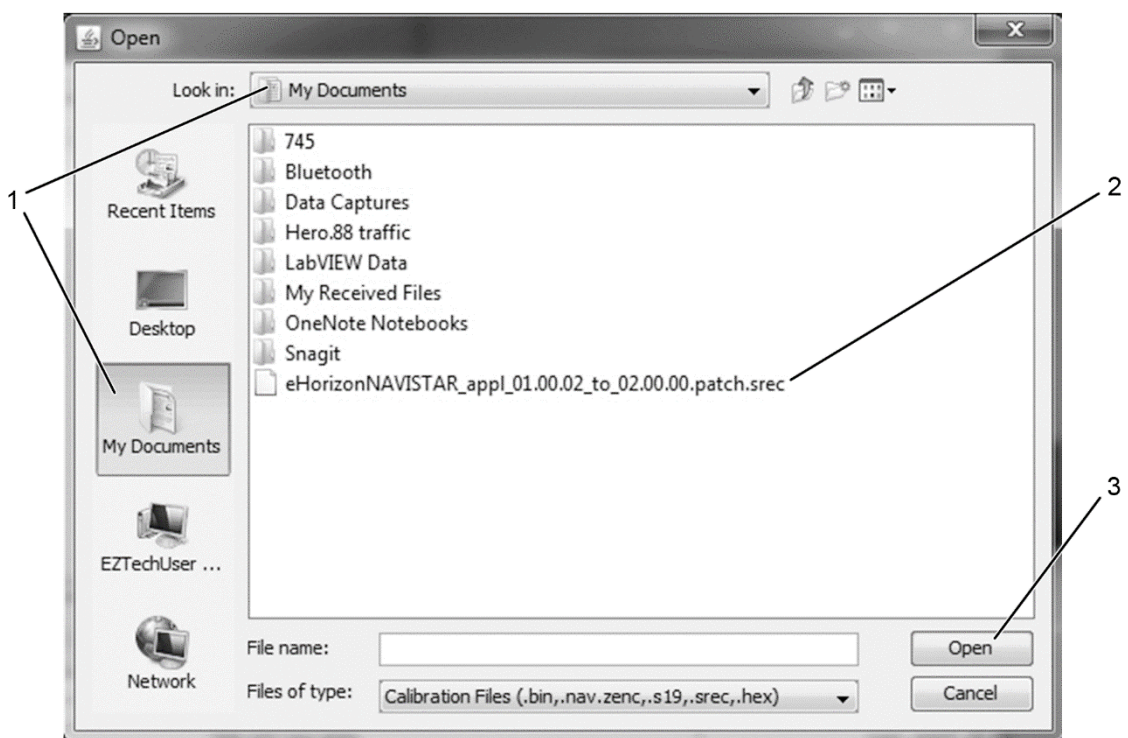
0000419714

Figure 3. Predictive Cruise Control Service Tool Flashing Tab

1. Flash button
2. Status bar

NOTE: Status bar will indicate transfer progress during software update.

11. When connection is established, click Flash button (Figure 3, Item 1).

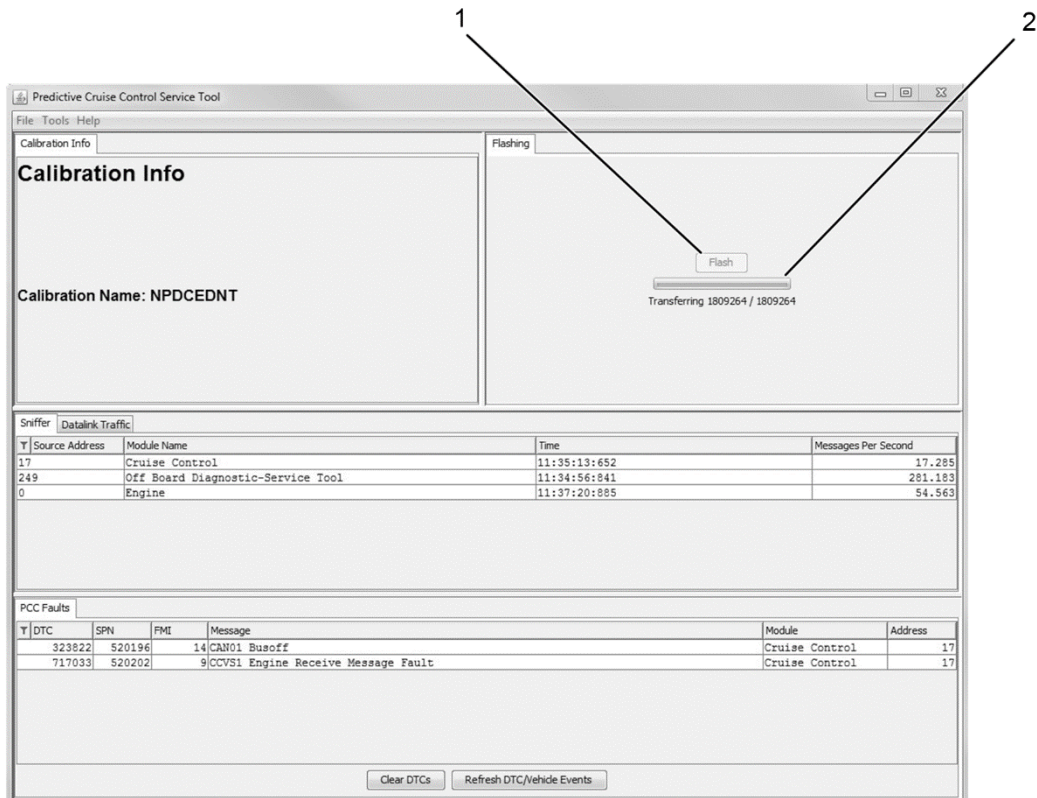


0000428464

Figure 4. My Documents Folder

1. My Documents
2. .SREC
3. Open button

12. When file selection box opens, navigate to My Documents and select the .SREC file. Click OPEN.



0000419714

Figure 5. Predictive Cruise Control Service Tool Flashing Tab

1. Flash button
2. Status bar

13. When transfer progress bar (Figure 5, Item 2) indicates transfer complete, a successful notification will be displayed.
14. Turn vehicle ignition to Key OFF, Engine OFF position.
15. Close Predictive Cruise Control Service Tool, and disconnect EZ-Tech® from vehicle.
16. Remove wheel chocks.

LABOR INFORMATION

Operation number must appear on all claims.

Operation Number	Description	Time
A40-17114-1	Predictive Cruise Calibration Update	0.4 hr

Table 2 Labor Information

WARRANTY CLAIMS

Warranty claim expense is to be charged to Warranty. Claims are to be submitted in the normal manner, making reference to Field Service Campaign 17114.

Section 7 of the Warranty Policy and Procedures Manual contains further information related to the submission and processing of AFC / Recall claims.

As with all claim submissions, items acquired locally must be submitted in the “Other Charges” tab. The cost of any bulk items (such as a bag of cable tie straps, roll of wire, barrel of oil, or tube of silicone) should be prorated for the cost of the individual pieces / amount used during each repair.

To make sure this important improvement is made in a timely manner, all claims for 17114 activity must be submitted by 29 September 2018 or within the normal warranty period for the component, if after 29 September 2018.

	GROUP	NOUN	C	WARR.	TP	PAD
GROUP — Enter number						
NOUN — Leave blank						
C (CAUSE) — Enter either 1, 2, 3. (See below)						
1. Inspected (No repair required).						
2. Inspected and repaired.						
3. Defective part from parts stock.						
WARRANTY — (Warranty Code) Enter 40.						
TYPE PART — Enter P for type part causing failure.						
PAD — Enter 100						

0000047910